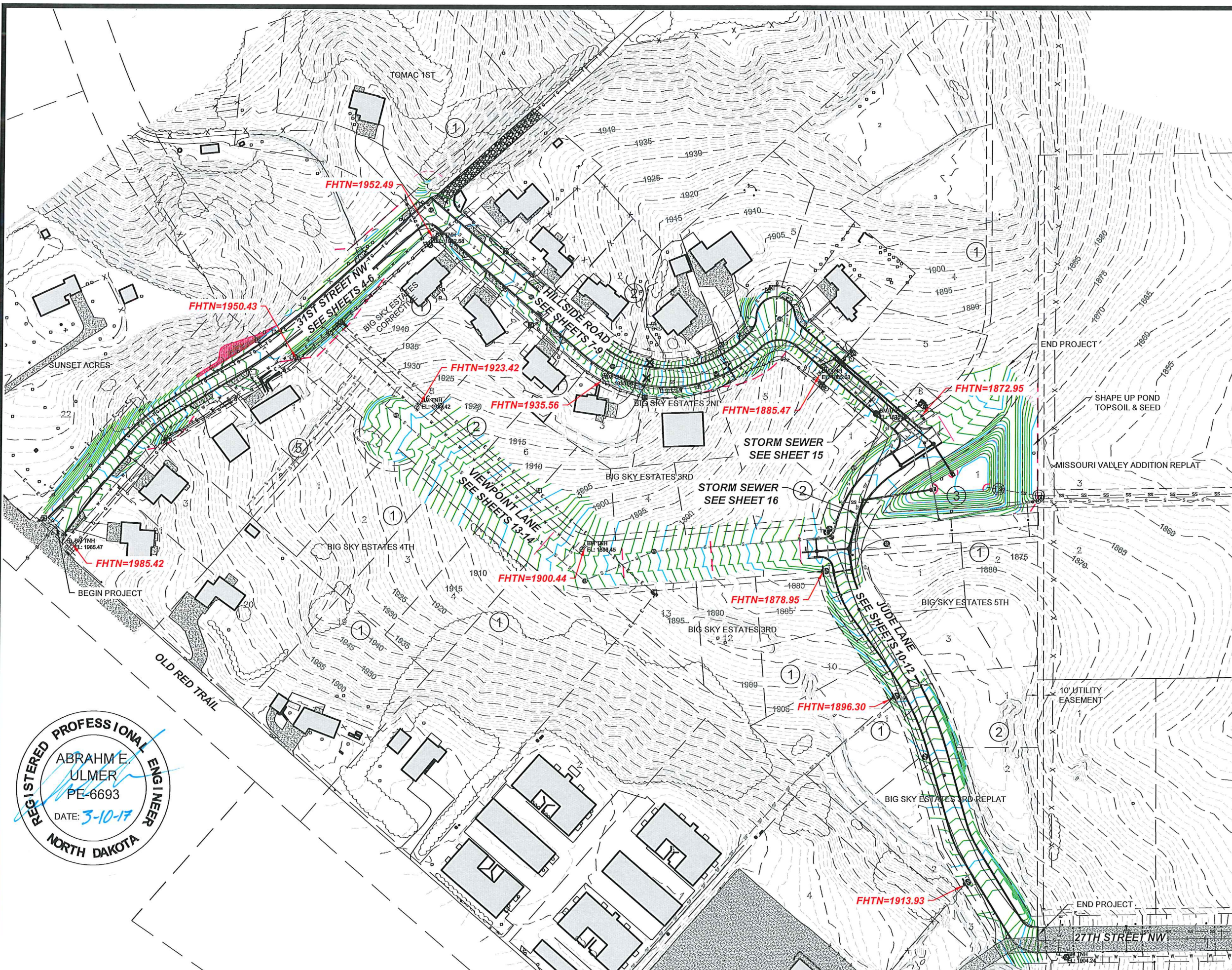


VERT. DATUM: NAVD88
 HORIZ DATUM: 1983 STATE PLANE, ND SOUTH (3302)

LEGEND

- PROPOSED CURB & GUTTER
- FUTURE CURB & GUTTER
- 1810 PROPOSED CONTOUR
- PROPOSED SAN CLEANOUT (BY OTHERS)
- PROPOSED SAN MANHOLE (BY OTHERS)
- PROPOSED SAN SERVICE (BY OTHERS)
- PROPOSED SANITARY SEWER (BY OTHERS)
- PROPOSED GATE VALVE (BY OTHERS)
- PROPOSED HYDRANT (BY OTHERS)
- PROPOSED WATER SERVICE (BY OTHERS)
- PROPOSED WATERMAIN (BY OTHERS)
- PROPOSED INLET
- PROPOSED STORM MH
- PROPOSED STORM SEWER
- FUTURE INLET
- FUTURE STORM MH
- FUTURE STORM SEWER
- PROPOSED STREET SIGN
- PROPOSED CONCRETE
- PROPOSED GRAVEL
- PROPOSED EROSION CONTROL FABRIC
- PROPOSED 9" FIBER ROLL
- PROPOSED SILT FENCE
- PROPOSED 6" FIBER ROLL



REGISTERED PROFESSIONAL ENGINEER
 ABRAHME
 ULMER
 PE-6693
 DATE: 3-10-17
 NORTH DAKOTA

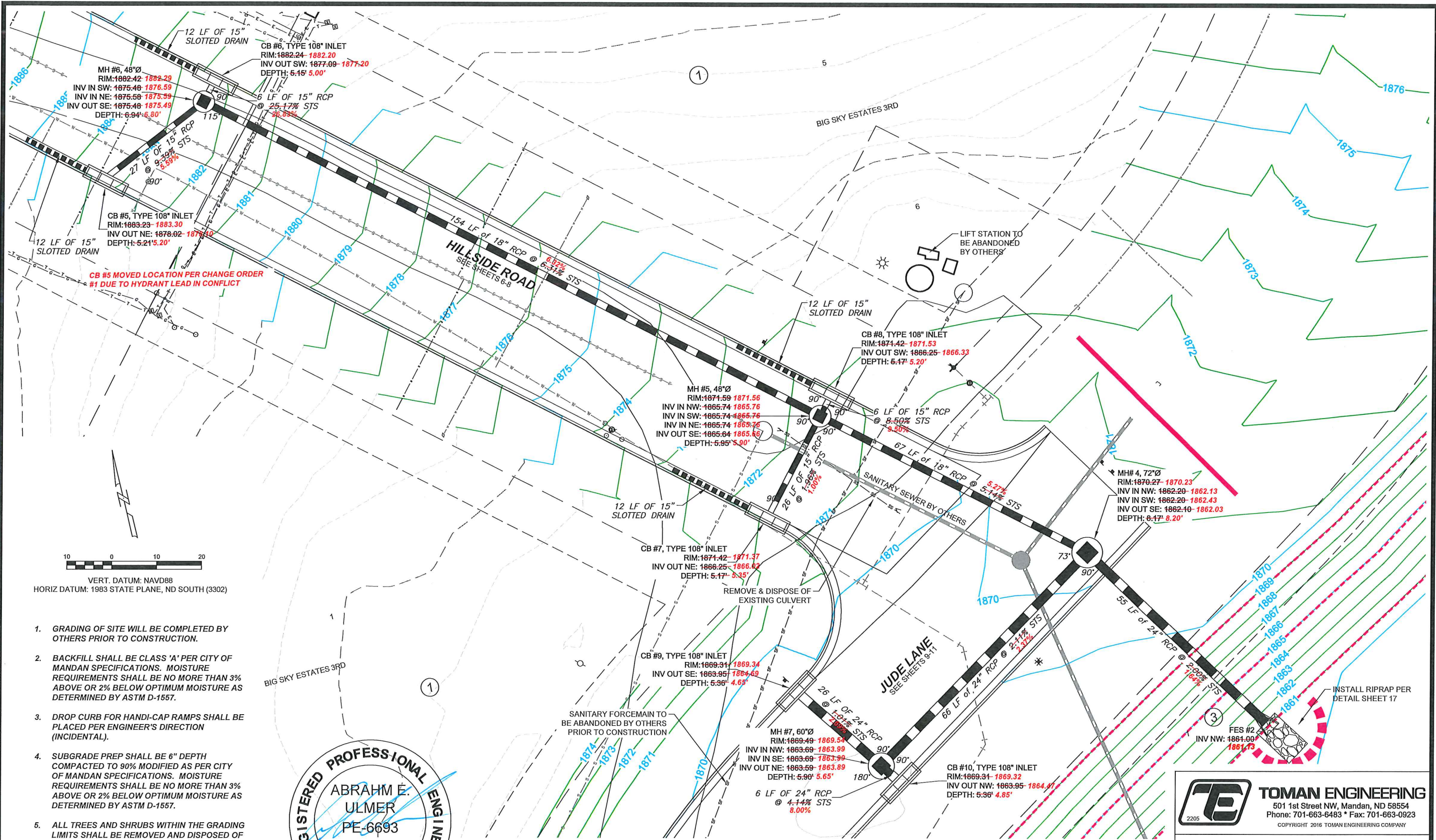
AS-BUILT

CAUTION
 UTILITY LOCATIONS ARE APPROXIMATE. CONTRACTOR IS RESPONSIBLE FOR VERIFYING LOCATION PRIOR TO EXCAVATION

TE TOMAN ENGINEERING
 501 1st Street NW, Mandan, ND 58554
 Phone: 701-663-6483 * Fax: 701-663-0923
 COPYRIGHT 2016 TOMAN ENGINEERING COMPANY

PROJECT LAYOUT - ASBUILT
 BIG SKY ESTATES
 MANDAN, NORTH DAKOTA

STREET IMPROVEMENT DISTRICT 206
 CITY PROJECT NO. 2016-07



1. GRADING OF SITE WILL BE COMPLETED BY OTHERS PRIOR TO CONSTRUCTION.
2. BACKFILL SHALL BE CLASS 'A' PER CITY OF MANDAN SPECIFICATIONS. MOISTURE REQUIREMENTS SHALL BE NO MORE THAN 3% ABOVE OR 2% BELOW OPTIMUM MOISTURE AS DETERMINED BY ASTM D-1557.
3. DROP CURB FOR HANDI-CAP RAMPS SHALL BE PLACED PER ENGINEER'S DIRECTION (INCIDENTAL).
4. SUBGRADE PREP SHALL BE 6" DEPTH COMPACTED TO 90% MODIFIED AS PER CITY OF MANDAN SPECIFICATIONS. MOISTURE REQUIREMENTS SHALL BE NO MORE THAN 3% ABOVE OR 2% BELOW OPTIMUM MOISTURE AS DETERMINED BY ASTM D-1557.
5. ALL TREES AND SHRUBS WITHIN THE GRADING LIMITS SHALL BE REMOVED AND DISPOSED OF PER CITY OF MANDAN SPECIFICATIONS. THIS SHALL BE CONSIDERED INCIDENTAL TO THE LUMP SUM BID "CLEARING & GRUBBING".
6. ALL STORM MANHOLES SHALL HAVE CONCENTRIC ACCESS HOLES IN TYPE 2 COVER.

REGISTERED PROFESSIONAL ENGINEER
ABRAHAM E. ULMER
 PE-6693
 DATE: 3-10-17
NORTH DAKOTA

AS-BUILT

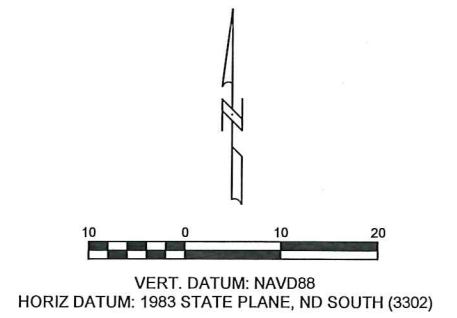
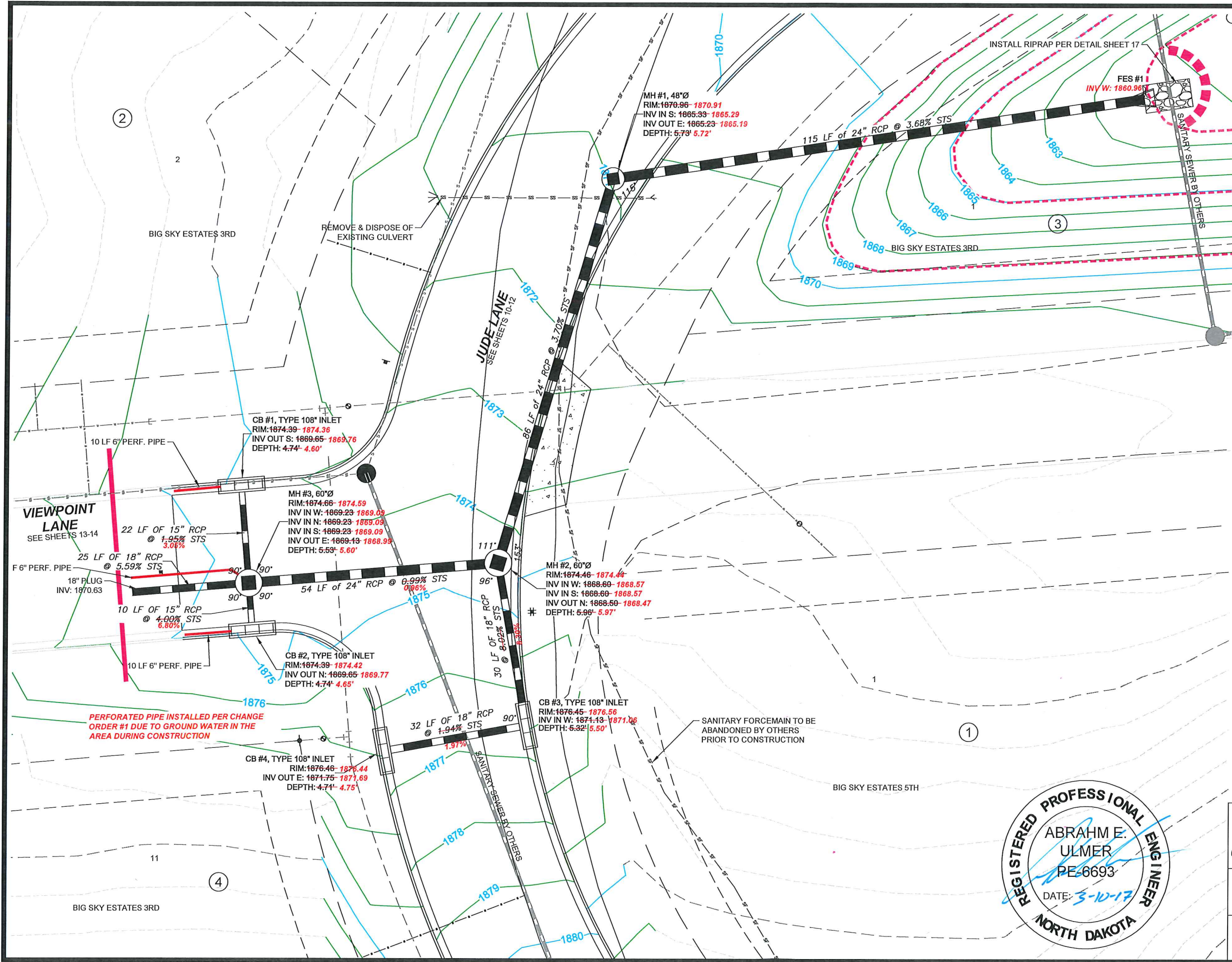
CAUTION
 UTILITY LOCATIONS ARE APPROXIMATE.
 CONTRACTOR IS RESPONSIBLE FOR
 VERIFYING LOCATION PRIOR TO
 EXCAVATION

TOMAN ENGINEERING

501 1st Street NW, Mandan, ND 58554
 Phone: 701-663-6483 * Fax: 701-663-0923
 COPYRIGHT 2016 TOMAN ENGINEERING COMPANY

STORM SEWER — ASBUILT

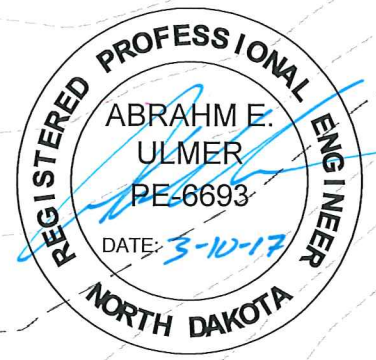
BIG SKY ESTATES
 MANDAN, NORTH DAKOTA
 STREET IMPROVEMENT DISTRICT 206
 CITY PROJECT NO. 2016-07
 SHEET 15 OF 19 APRIL, 2016



1. GRADING OF SITE WILL BE COMPLETED BY OTHERS PRIOR TO CONSTRUCTION.
2. BACKFILL SHALL BE CLASS 'A' PER CITY OF MANDAN SPECIFICATIONS. MOISTURE REQUIREMENTS SHALL BE NO MORE THAN 3% ABOVE OR 2% BELOW OPTIMUM MOISTURE AS DETERMINED BY ASTM D-1557.
3. DROP CURB FOR HANDI-CAP RAMPS SHALL BE PLACED PER ENGINEER'S DIRECTION (INCIDENTAL).
4. SUBGRADE PREP SHALL BE 6" DEPTH COMPACTED TO 90% MODIFIED AS PER CITY OF MANDAN SPECIFICATIONS. MOISTURE REQUIREMENTS SHALL BE NO MORE THAN 3% ABOVE OR 2% BELOW OPTIMUM MOISTURE AS DETERMINED BY ASTM D-1557.
5. ALL TREES AND SHRUBS WITHIN THE GRADING LIMITS SHALL BE REMOVED AND DISPOSED OF PER CITY OF MANDAN SPECIFICATIONS. THIS SHALL BE CONSIDERED INCIDENTAL TO THE LUMP SUM BID "CLEARING & GRUBBING".
6. ALL STORM MANHOLES SHALL HAVE CONCENTRIC ACCESS HOLES IN TYPE 2 COVER.

AS-BUILT

CAUTION
UTILITY LOCATIONS ARE APPROXIMATE.
CONTRACTOR IS RESPONSIBLE FOR
VERIFYING LOCATION PRIOR TO
EXCAVATION



TOMAN ENGINEERING
501 1st Street NW, Mandan, ND 58554
Phone: 701-663-6483 * Fax: 701-663-0923
COPYRIGHT 2016 TOMAN ENGINEERING COMPANY

STORM SEWER - ASBUILT
BIG SKY ESTATES
MANDAN, NORTH DAKOTA

STREET IMPROVEMENT DISTRICT 206
CITY PROJECT NO. 2016-07

SHEET 16 OF 19 APRIL, 2016