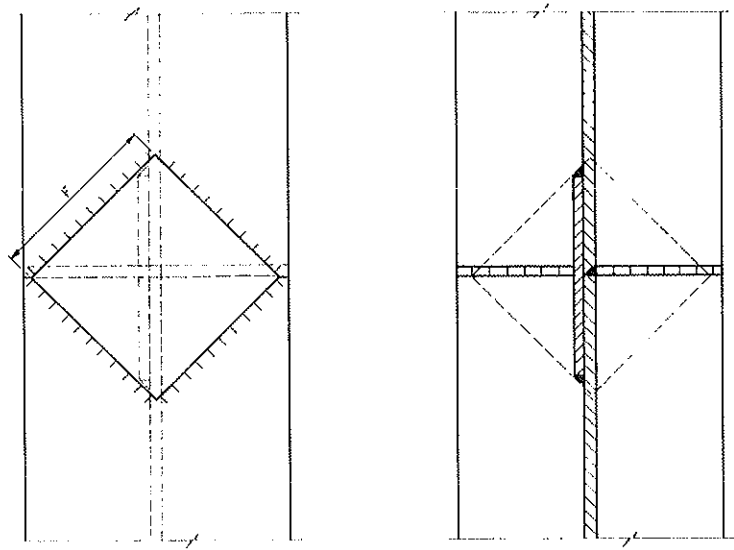
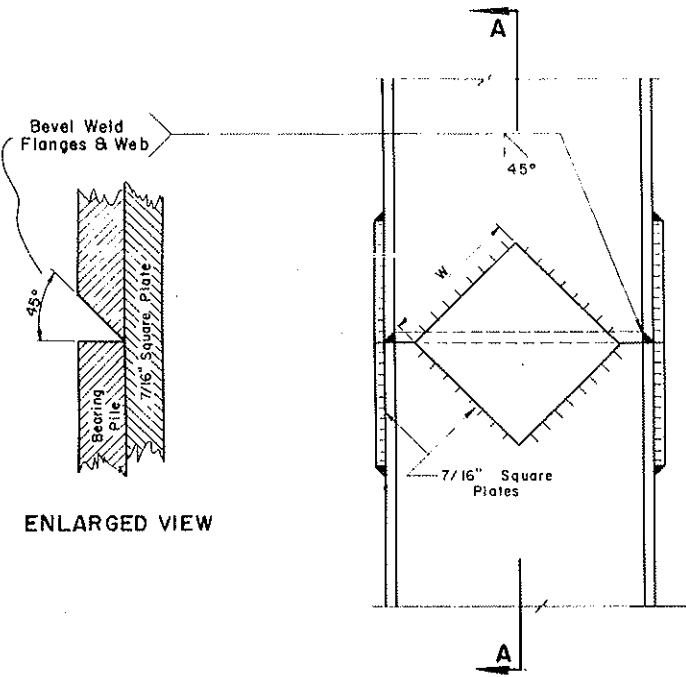
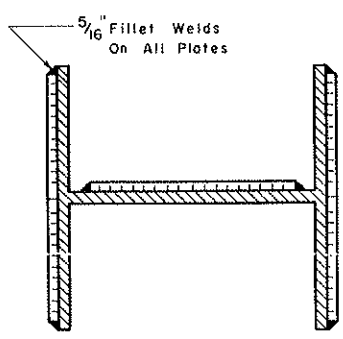


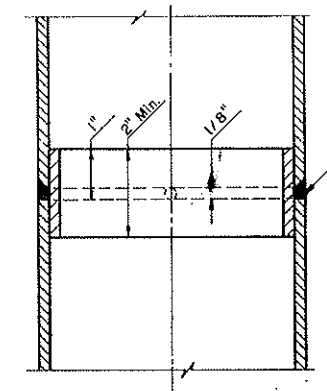
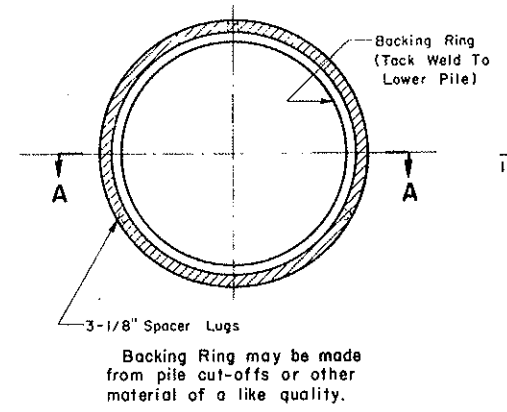
MADE BY
 CHECKED BY
 TRACING
 QUANTITIES
 MADE BY
 CHECKED BY
 MADE BY
 CHECKED BY



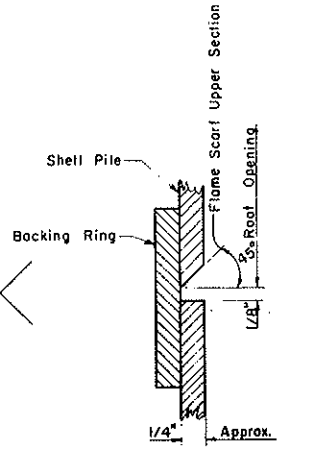
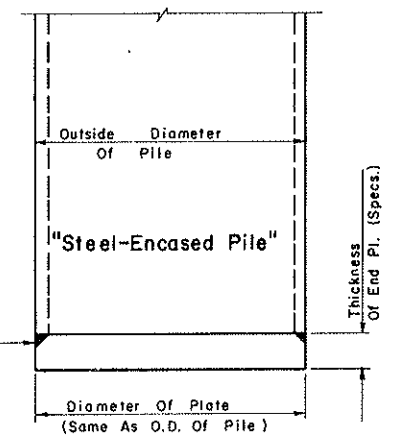
Flame Scarf Inside Of Both Flanges And One Side Of Web Of Upper Section



PILE	8"	10"	12"	14"
F FLANGE	5"	6 1/2"	8"	10"
W WEB	4"	5 1/2"	6 1/2"	8"



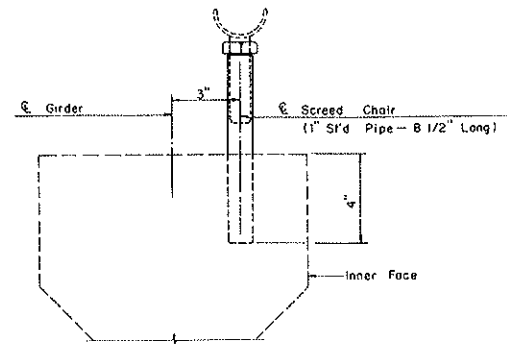
SHELL PILE SPLICE DETAIL



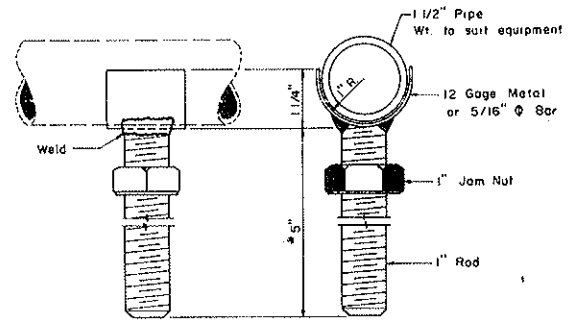
All welding shall conform to the current specification for "Welded Highway and Railway Bridges of the American Welding Society."

PILE SPLICE
 DETAILS

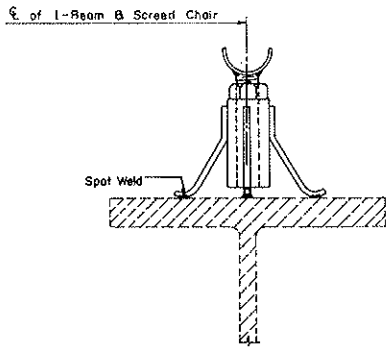
DESIGN	MADE BY	REVISIONS	MADE BY	CHKD BY	DATE
DETAILS	CHECKED BY				
TRACING	CHECKED BY				
QUANTITIES	CHECKED BY				



SCREED CHAIR IN PRESTRESSED GIRDER
(Outside Girders Only)



ADJUSTABLE SCREED HOLDER
* Useable with slab thickness of 7" or less. For greater slab thickness adjust length accordingly.



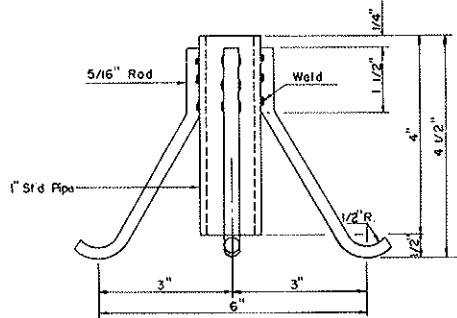
I-BEAM WITH SCREED CHAIR

NOTE:

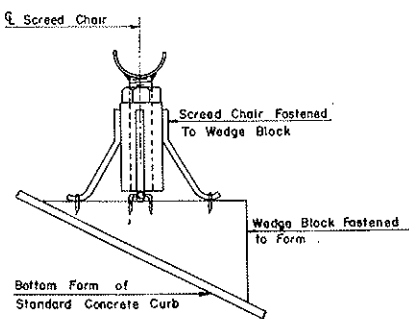
THE SPACING OF SCREED CHAIRS SHALL BE SUCH THAT NO NOTICEABLE DEFLECTION OCCURS IN THE SCREED WHEN THE VIBRATION STRIKE-OFF IS IN OPERATION. CHAIRS SHALL BE SIMILARLY PLACED FOR ALL SCREEDS ON THE SAME BRIDGE SPAN WITH A MAXIMUM SPACING OF THREE FEET WHEN USING 1 1/2" EXTRA STRONG PIPE FOR A SCREED. SCREEDS SHALL BE SET ON OUTER BEAMS AND ALSO ON INTERMEDIATE BEAMS IF NECESSARY TO MAINTAIN THE REQUIRED TEMPLATE.

THE COST OF THE SCREED CHAIRS AND HOLDERS SHALL BE INCLUDED IN THE UNIT PRICE BID FOR THE VARIOUS PAY ITEMS. UPON COMPLETION OF THE PROJECT THE SCREED AND SCREED HOLDERS SHALL REMAIN THE PROPERTY OF THE CONTRACTOR.

THE DESIGN SHOWN FOR THE SCREED CHAIRS AND SEAT MAY BE VARIED SLIGHTLY TO SUIT MANUFACTURERS PRODUCTS IF APPROVED BY THE ENGINEER.



SCREED CHAIR



BOTTOM CURB FORM WITH SCREED CHAIR

NORTH DAKOTA
STATE HIGHWAY DEPARTMENT

**SCREED CHAIR
&
ADJUSTABLE SCREED
HOLDER**

APPROVED:
3-20-79
DATE

Allen J. Anderson
BRIDGE ENGINEER