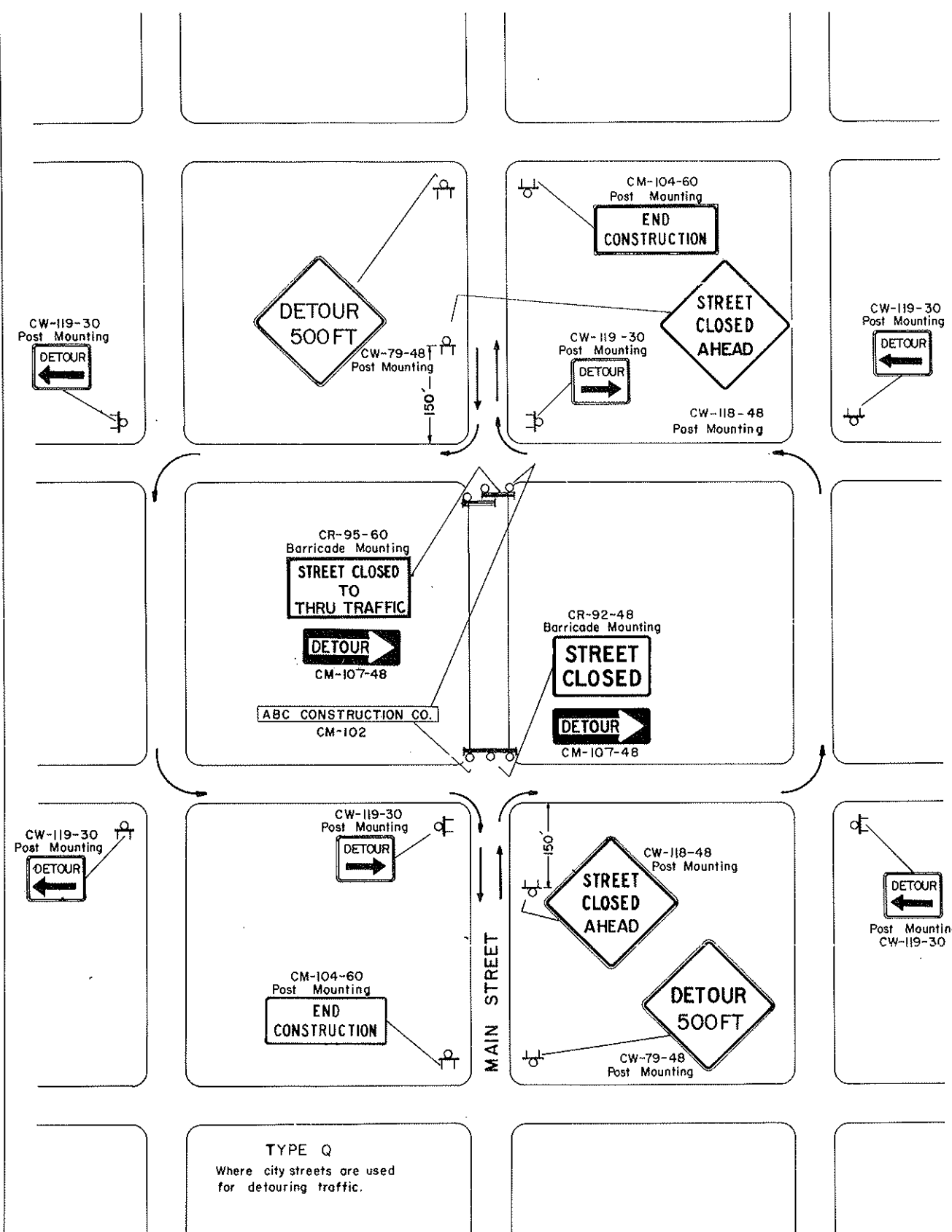
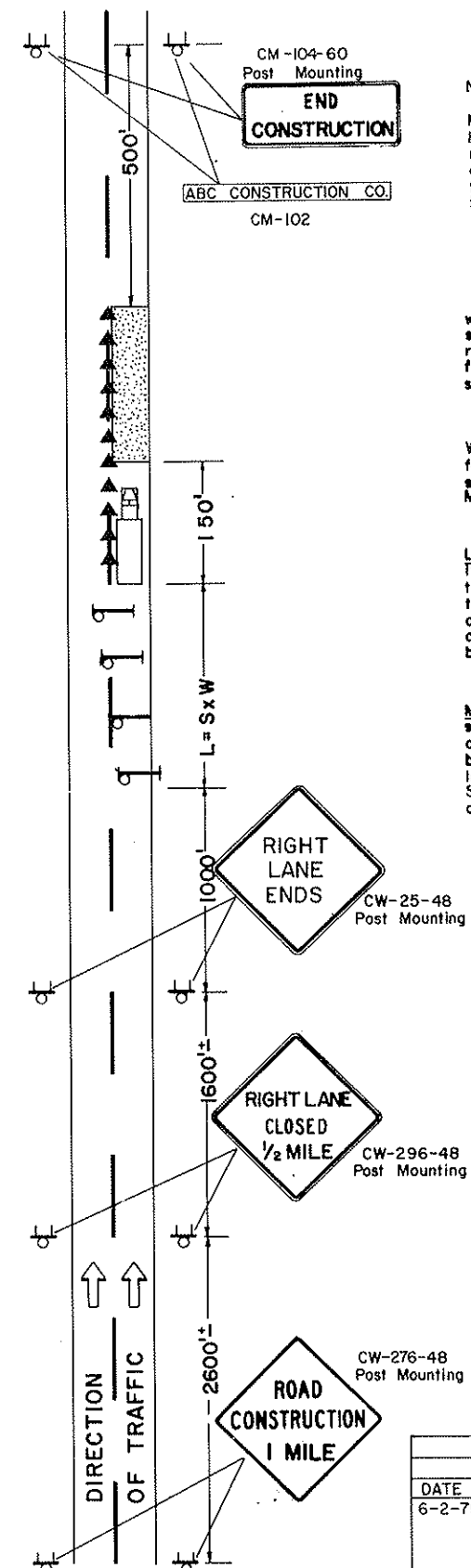


# CONSTRUCTION SIGN AND BARRICADE LOCATION DETAILS



- KEY**
- I Type I Barricades
  - II Type II Barricades
  - III Type III Barricades
  - ▲ Cones
  - Flashers
  - Flagman
  - Delineator Drums
  - Signs
  - T Type A Delineator



**NOTES:**

**FLAGS:** All advance warning signs shall have two orange warning flags 24" square mounted perpendicular to the edges of the diamond sign and at such a distance above the edges so that when flag is hung limp it will not touch the sign.

Sign No. CM-101-72 shall be used on all projects where traffic is maintained. All intermediate signs shall be moved as work progresses and shall be removed when hazard ceases to exist. Two lighted flashers shall be maintained in front of all intermediate signs if hazard remains at night.

Where advance warning sign placed as shown interferes with permanent signs, The warning sign location shall be determined by the Engineer for best results. Messages shall be varied as required.

**Lighting** - Flashers shall be maintained as shown. If danger exists at night or work area is closed to the traffic lane, the edge of the traffic lane on the work area side shall be illuminated by flashers or reflectorized delineators spaced at 100ft. centers. The flashers shall be placed above the barricade bar and above the warning signs.

**Mounting** - Barricade shown to be placed on roadway shall be on a movable Assembly. Sign to be mounted on barricades shall be mounted with the sign bottom on the top of the top barricade bar. Intermediate Sign shall be on a movable assembly. Sign show to be placed on roadway shall be placed on movable assemblies.

**Note:**  
 L = Minimum Length of Taper  
 S = Numerical value of Speed limit or 85 percentile speed  
 W = Width of offset

**TYPE P**  
 4 Lane Divided Roadway where half of roadway is closed.

3-13-72					
REVISIONS					
DATE	CHANGE				
6-2-75	Sign No.				

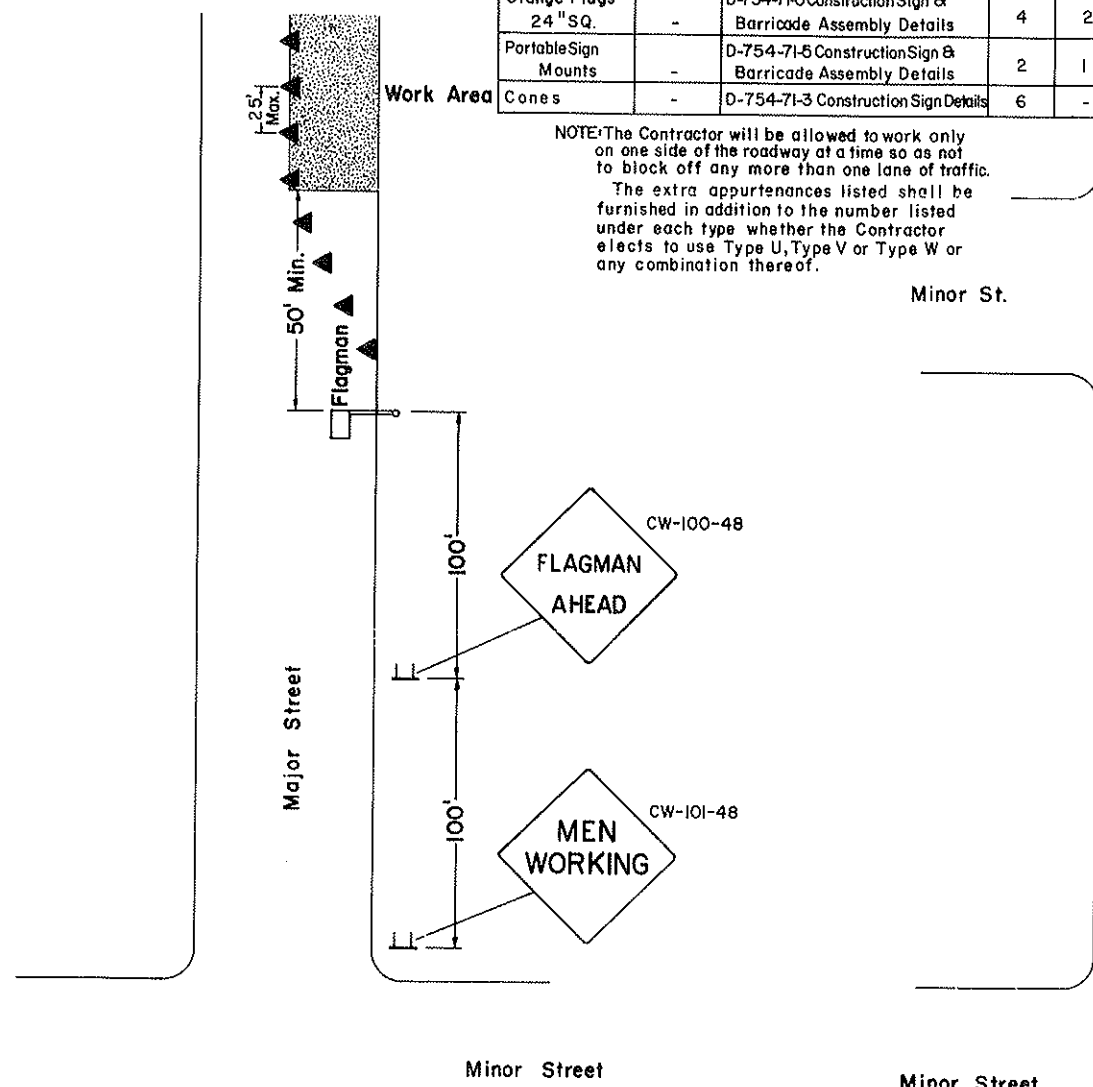
NORTH DAKOTA STATE HIGHWAY DEPARTMENT	
Submitted: _____ Design Engineer	
Recommended: _____ Asst. Chief Engineer, Proj. Constr.	
Approved: _____ Chief Engineer	

### CITY CONSTRUCTION SIGN LOCATION DETAILS

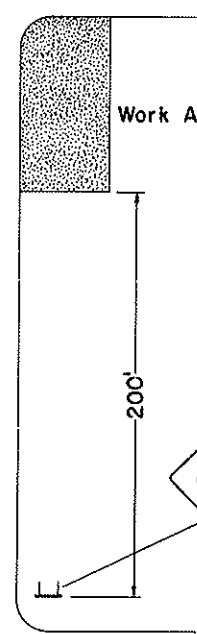
CITY CONSTRUCTION SIGN LIST						
APPURTENANCE	SIGN NO.	STANDARD DRWG. NAME & NO.	QUANTITIES			
			TYPE U	TYPE V	TYPE W	EXTRA
Flagman Ahead	CW-100-48	D-754-71-2 Construction Sign Details	1	-	3	1 *
Men Working	CW-101-48	D-754-71-2 Construction Sign Details	1	1	1	1
Stop & Slow Sign Paddles	CR-96-24 CW-100-24	D-754-71-4 Construction Sign Details	1	-	3	1 *
Orange Flags 24" SQ.	-	D-754-71-5 Construction Sign & Barricade Assembly Details	4	2	8	7
Portable Sign Mounts	-	D-754-71-5 Construction Sign & Barricade Assembly Details	2	1	4	1
Cones	-	D-754-71-3 Construction Sign Details	6	-	5	4 *

NOTE: The Contractor will be allowed to work only on one side of the roadway at a time so as not to block off any more than one lane of traffic. The extra appurtenances listed shall be furnished in addition to the number listed under each type whether the Contractor elects to use Type U, Type V or Type W or any combination thereof.

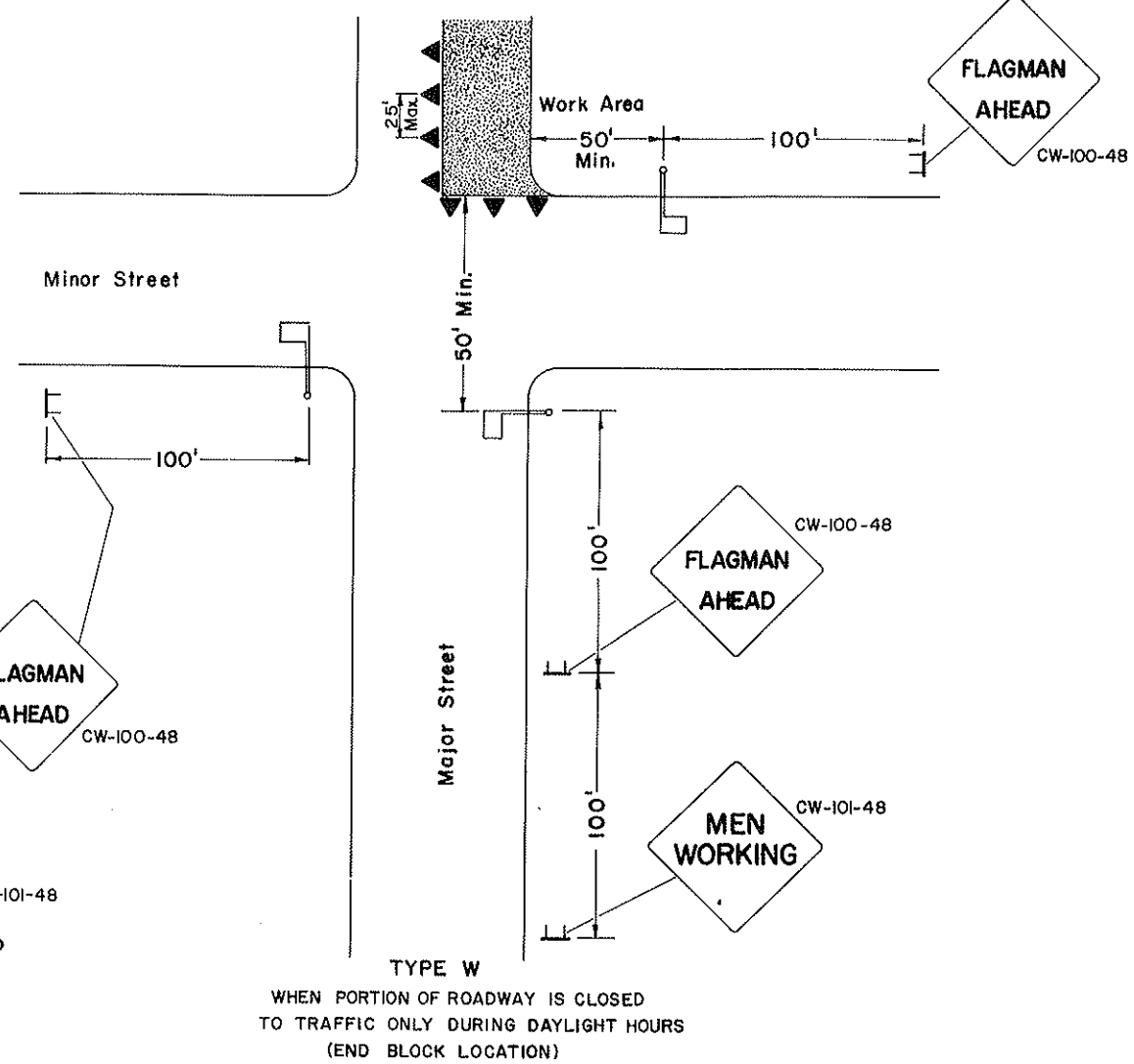
\* Does not apply if type V is the only type used.



**TYPE U**  
WHEN PORTION OF ROADWAY IS CLOSED TO TRAFFIC ONLY DURING DAYLIGHT HOURS (MID BLOCK LOCATION)



**TYPE V**  
WHEN WORK AREA IS OUTSIDE OF DRIVING LANE AND NO CLOSURE IS NECESSARY

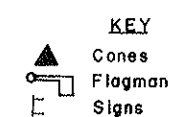


**TYPE W**  
WHEN PORTION OF ROADWAY IS CLOSED TO TRAFFIC ONLY DURING DAYLIGHT HOURS (END BLOCK LOCATION)

**NOTE:** Where advance warning sign placed as shown interferes with permanent signs, the warning sign location shall be determined by the Engineer for best results. Messages shall be varied as required.

Where parking is present the signs shall be placed so they are entirely visible above the parked vehicles or placed at the edge of the parking area so they are visible to oncoming traffic. The number of locations will determine the number of signs needed and the length of the work area will determine the number of cones. The contractor shall furnish the number of appurtenances needed for each situation. If more than one location is being worked on, the Contractor shall furnish the necessary appurtenances for those additional locations. No additional compensation will be given for additional appurtenances but shall be included in the price bid for maintenance and protection of traffic.

**Mounting**— Sign shown to be placed on roadway shall be placed on movable assemblies. (All devices shall be removed when hazard ceases to exist).



3-13-72	
REVISIONS	
DATE	CHANGE
8-27-73	Orange Flag note and Construction Sign List

NORTH DAKOTA  
STATE HIGHWAY DEPARTMENT

Submitted: *R. Johnson*  
Design Engineer

Recommended: \_\_\_\_\_  
Asst. Chief Engineer, Pre-Const.

Approved: *R. Bradley*  
Chief Engineer