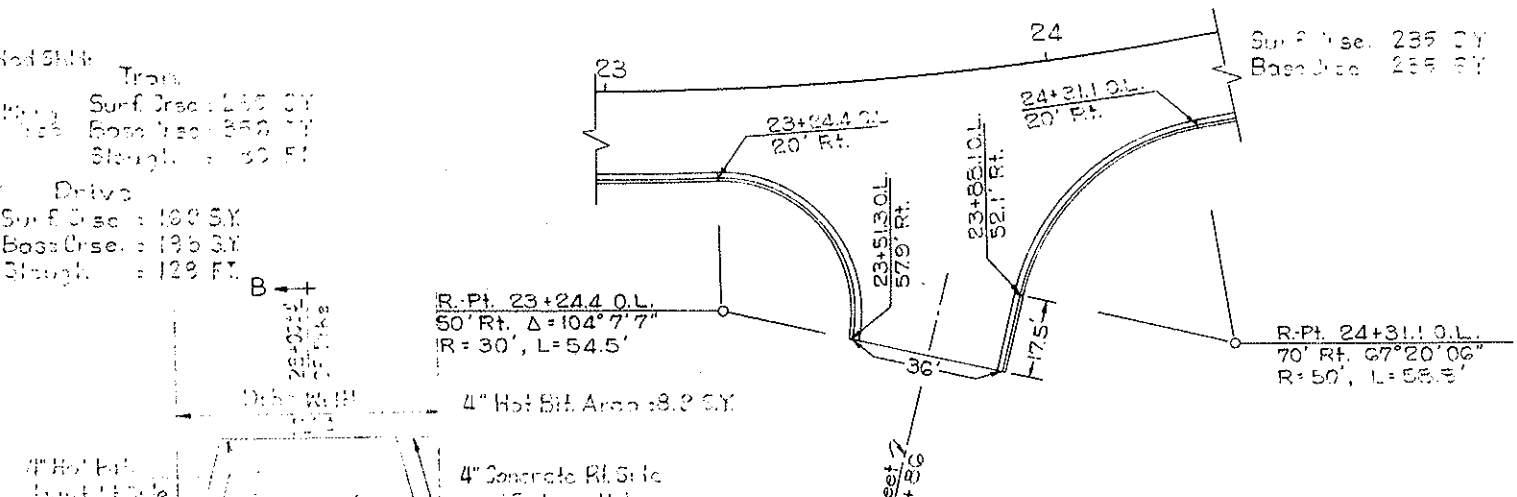
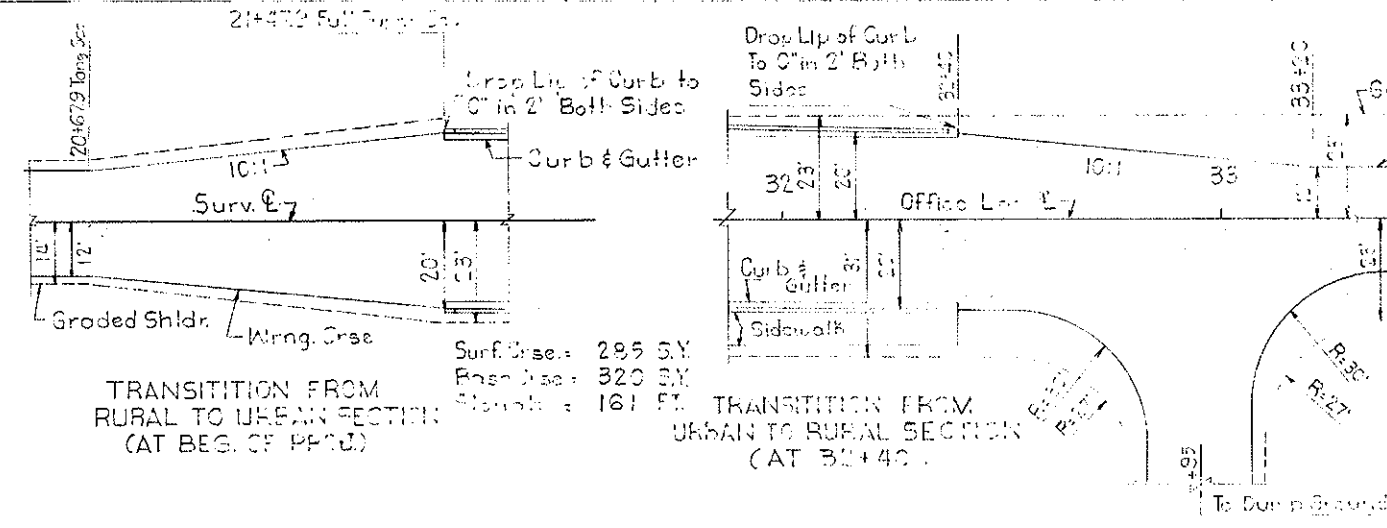
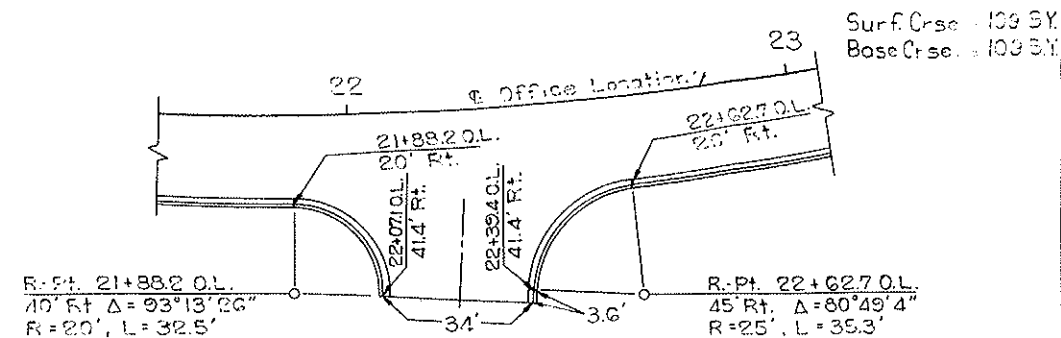


BASIS OF ESTIMATE, ST. INTERSECTION DETAIL  
 & SUMMARY OF QUANTITIES

PROJ. ROAD DIST. NO.	STATE	PROJ. NO.	SHEET NO.
B	N.D.	BRS-1-806(05)	6

SPEC. NO. CONTRACT NO.	ESTIMATED QUANTITIES						
	216 0120	406 0135	406 0320	401 0152	420 0155	420 0145	420 0160
DESCRIPTION	WATER	HOT BIT. PAVEMENT CLASS 24	120-150 ASPHALT CEMENT	55-114 OR 65-114 EMUL ASPH FOR TACK COAT	RC 250-300 LIP ASPH FOR CURB & GUTTER	COVER COAT MATERIAL CLASS 43	BLOCKER MATERIAL CLASS 44
	M GAL	TON	TON	GAL	GAL	TON	TON
21+47.9 to 28+45 Urban	.3	1353.3	97.5	288.8	1003.1	35.8	8.6
30+95 to 32+40 Urban	.1	281.9	20.3	59.6	208.6	7.5	1.8
33+20 to 37+70.9 Rural	.2	948.4	68.3	191.5	641.3	20.0	4.3
20+67.9 to 21+47.9 Rural to Urban Transition		150.1	11.5	30.5	108.8	3.8	.9
32+40 to 33+20 Urban to Rural Transition		173.3	12.5	32.1	114.0	3.6	.9
Street Int. 6 <sup>th</sup> & 7 <sup>th</sup>		162.5	11.7	34.4	120.5	4.3	1.0
Dike Drive Lt Side		2.0	.2	.2	1.6	.1	.1
Rural Drives 32+35 Rt & 34+02 Lt		111.3	8.0	22.4	82.0	2.9	.7
<b>GRAND TOTAL</b>	<b>1</b>	<b>3192</b>	<b>230</b>	<b>657</b>	<b>2073</b>	<b>78</b>	<b>19</b>



URBAN	RURAL	QUANTITY PER STA	QUANTITY PER STA	WIDTH	DEPTH	UNIT	DESCRIPTION	QUANTITY PER STA
		.047	.047			Mgal	Water for Dual Palliative @ 2.5" Gal/In	
		79.94	96.14	3 <sup>1/2</sup>	3 <sup>1/2</sup>	Ton	Hot Bit Pavement (Base Crse) @ 2.0 Ton/3 <sup>1/2</sup> W	19444
		5.76	6.92			Ton	120-150 Asphalt Cement for Hot Bit Pavement @ 2.0% of Hot Bit Pavement	14400
		20.55	23.89	3 <sup>1/2</sup>	3 <sup>1/2</sup>	Gal	55-114 or 65-114 Emul Asph for Tack Coat @ 1.05 Gal/1/3 <sup>1/2</sup> W	.39
		68.51	76.85	3 <sup>1/2</sup>	3 <sup>1/2</sup>	Ton	Hot Bit Pavement (Base Crse) @ 2.0 Ton/3 <sup>1/2</sup> W	16867
		4.33	5.52			Ton	120-150 Asphalt Cement for Hot Bit Pavement @ 7.2% of Hot Bit Pavement	11220
		20.56	18.61	3 <sup>1/2</sup>	3 <sup>1/2</sup>	Gal	55-114 or 65-114 Emul Asph for Tack Coat @ 1.05 Gal/1/3 <sup>1/2</sup> W	.05
		45.88	37.35	2 <sup>1/2</sup>	2 <sup>1/2</sup>	Ton	Hot Bit Pavement (Surf Crse) @ 2.0 Ton/2 <sup>1/2</sup> W	11111
		3.29	2.69			Ton	120-150 Asphalt Cement for Hot Bit Pavement @ 7.2% of Hot Bit Pavement	39800
		143.80	124.44	6 <sup>1/2</sup>	6 <sup>1/2</sup>	Gal	RC 250-300 Lip Asph for Curb & Gutter @ 2.0 Gal/3 <sup>1/2</sup> W	35
			17.78	6 <sup>1/2</sup>	6 <sup>1/2</sup>	Gal	RC 250-300 Lip Asph for Curb & Gutter @ 2.0 Gal/3 <sup>1/2</sup> W (Shldr/Road)	20
		5.74	4.44			Ton	Cover Coat Material Class 43 @ 25 Lb/3 <sup>1/2</sup> W	10125
		7.23	11.07			Ton	Blocker Material Class 44 @ 25 Lb/3 <sup>1/2</sup> W	1003

\* Grade to Be Checked by the Engineer  
 \*\* Quantity Given Does Not Include Water

