

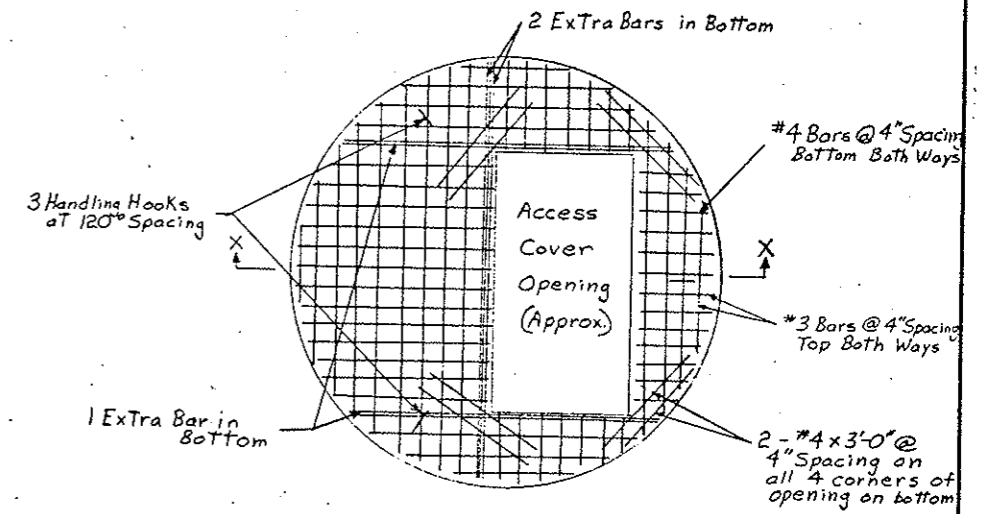
FHWA REGION	STATE	FED. AID PROJ. NO.	SHEET NO.
8	N.D.	MG-1-010(05)	18

Notes:

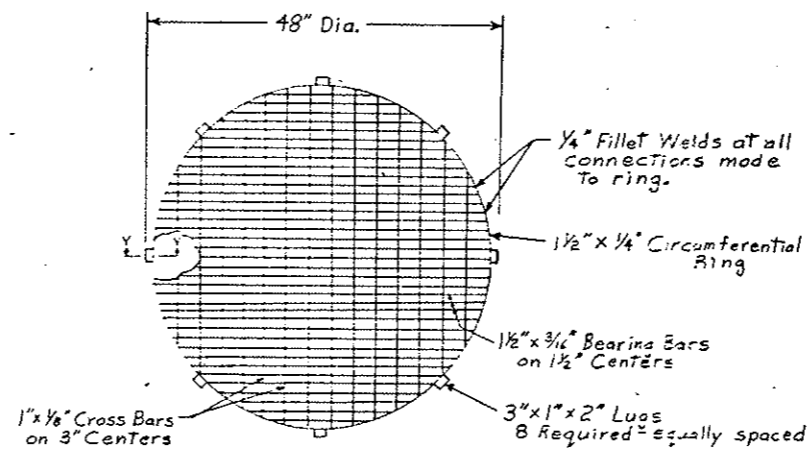
The dimensions and location of access cover opening in pump station concrete cover will have to be determined by pumping equipment supplier so as to assure easy removal of slide-out type pumps through opening.

Trash grate shall be constructed of aluminum alloy members joined together by the "pressure-lock" type construction. Grate bar spacing may vary from dimensions shown, in order to obtain a ready-made commercially available grate size, with area of openings between 4 to 5 square inches. All material, labor, equipment, and hardware necessary for installation of trash grate shall be included as incidental to price bid for "48 In. Fein. Conc. Pipe-Sewer Cl. III."

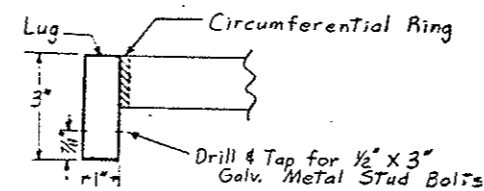
The limits of the concrete bevel at the bottom of pump station shall be determined by Engineer in the field.



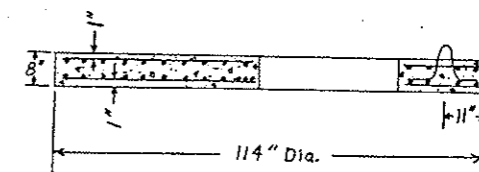
Pump Station Cover
Top View



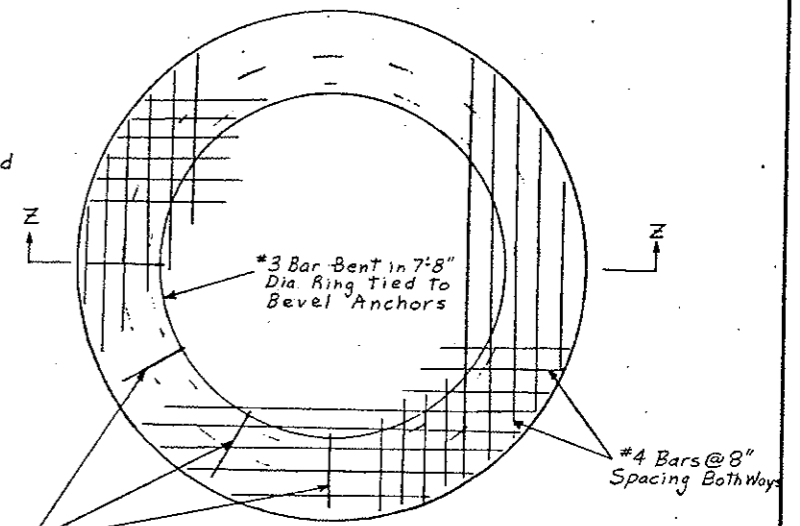
Aluminum Trash Grate Detail
(See Notes)



Section Y-Y

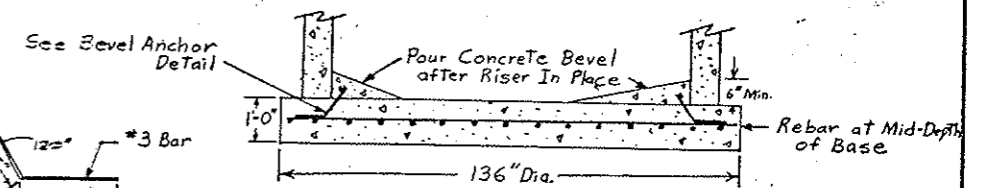


Section X-X

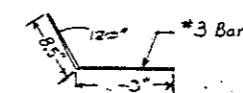


Pump Station Base
Top View

E-beel Anchors @ 30° Spacings around Ring



Section Z-Z



Bevel Anchor Detail

Pump Station
Base & Cover Details