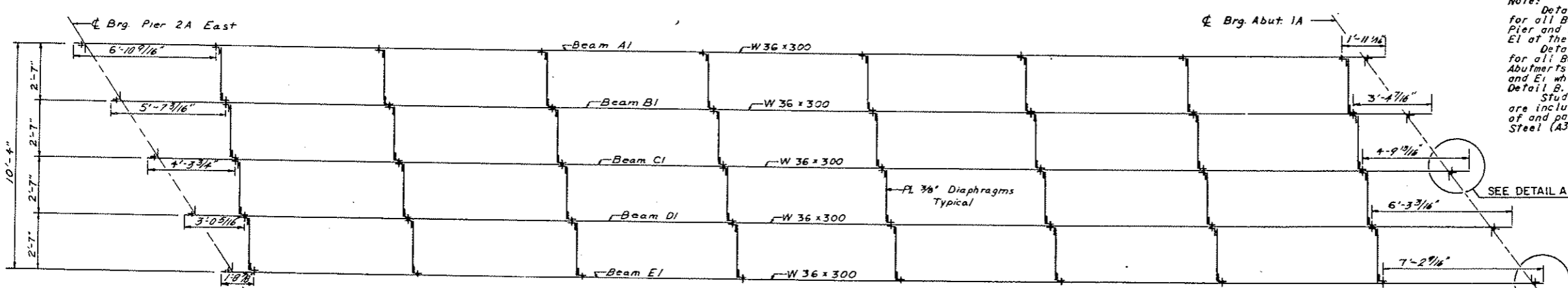
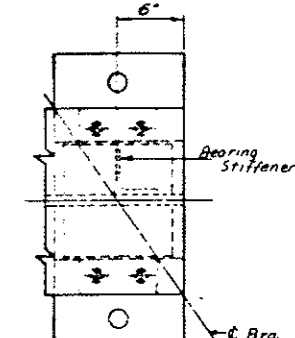
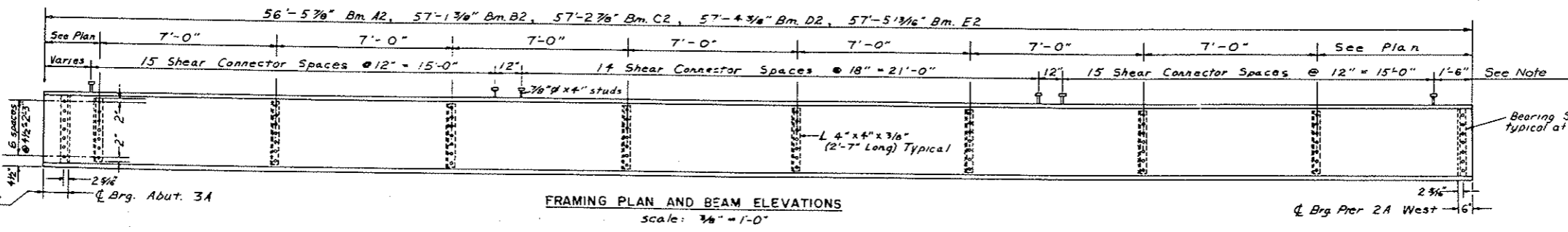
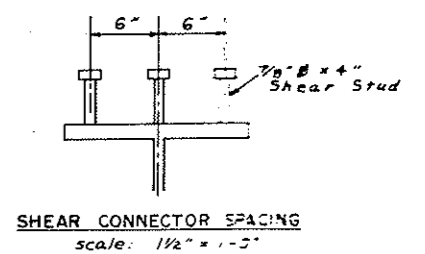
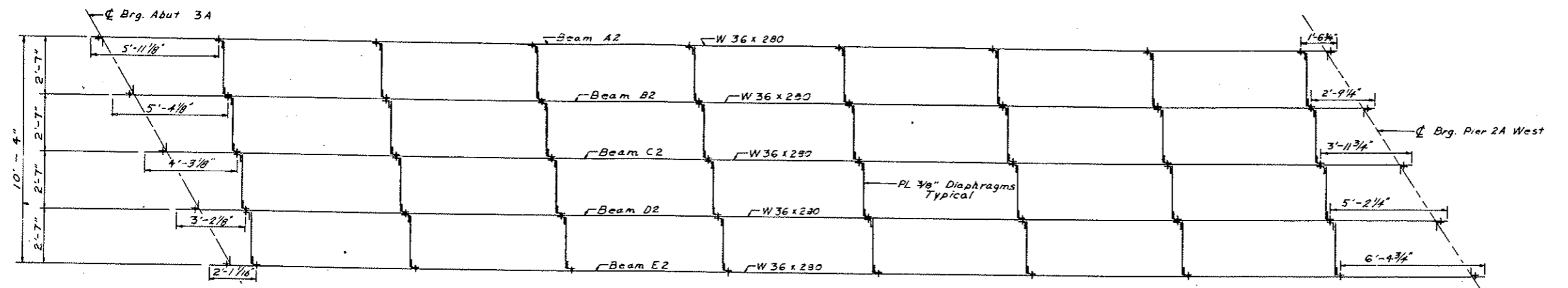
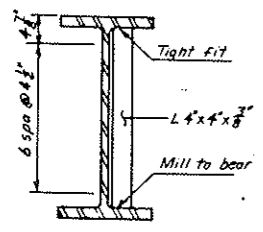
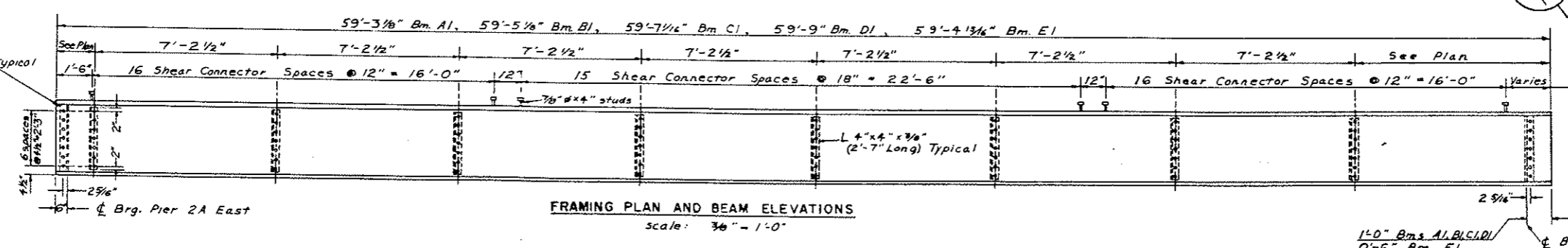
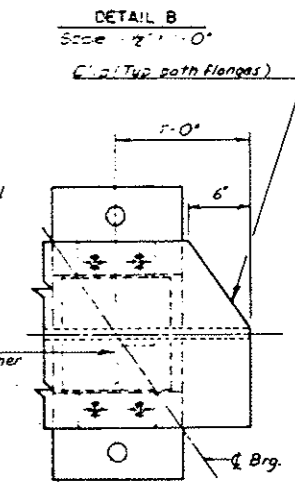


| BRIDGE CODE | R.R. BRIDGE NO. | FED. ROAD DIST. NO. | STATE PROJ. NO. | FISCAL YEAR | SHEET NO. | TOTAL SHEETS |
|-------------|-----------------|---------------------|-----------------|-------------|-----------|--------------|
| X671 | 199 | 8 | MG-00 (CS) 9.7 | | 55 | |



Note: Detail B is typical for all beam ends of the Pier and for Beams A2 and E1 at the Abutments. Detail A is typical for all beam ends at the Abutments except Beams A2 and E1 which are like Detail B. Stud Shear Connectors are included in the weight of and paid for as Structural Steel (A36).



Note: At Beams E2 and A1 at Pier 2A eliminate shear studs within 4'-0" from end of beam. At Beams D2 and B1 eliminate shear studs within 2'-0" from end of beam. See sheet 13 for diaphragm details.

| QUANTITIES | |
|---|-------------|
| Structural Steel | |
| Steel, A36 | 182,960 lbs |
| | |
| FRAMING PLAN AND BEAM DETAILS BRIDGE A BURLINGTON NORTHERN, INC. RAILWAY UNDERPASSES | |
| U.S. HIGHWAY NO. 10 MORTON COUNTY | |