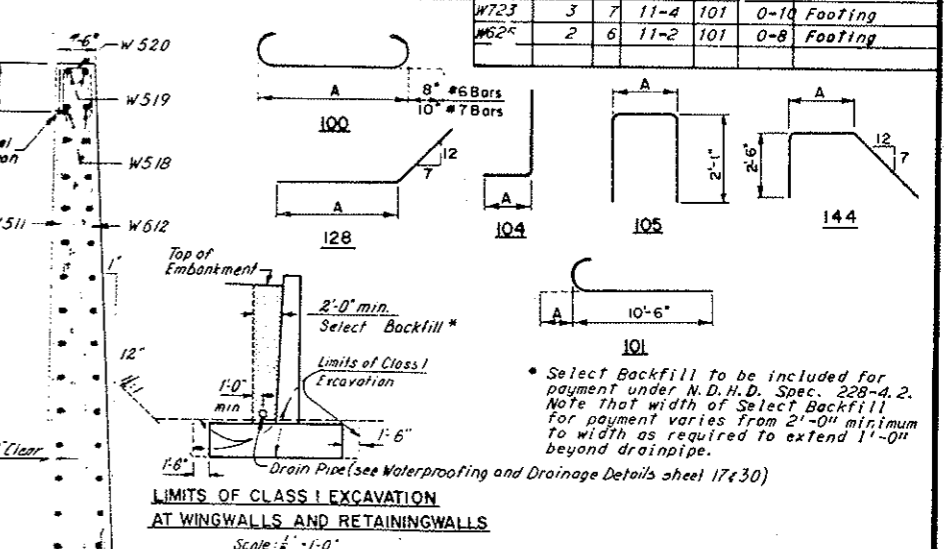
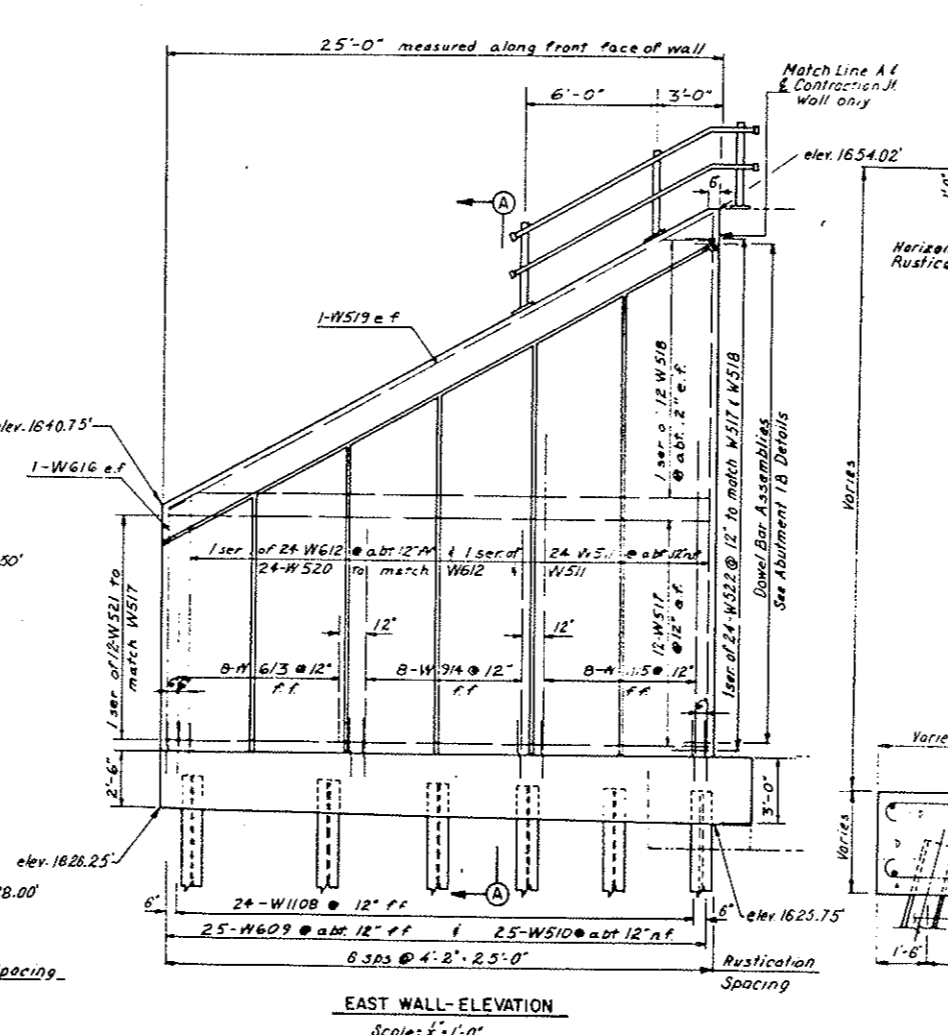
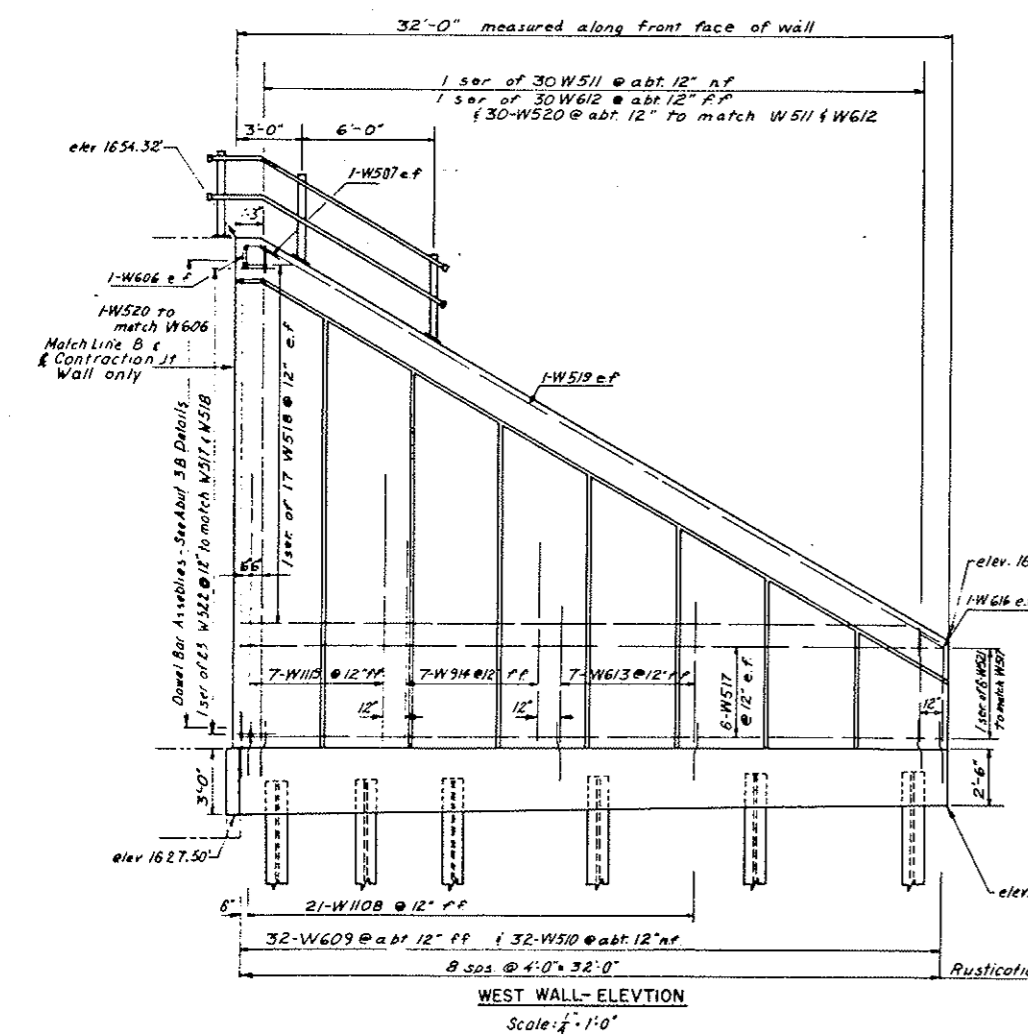
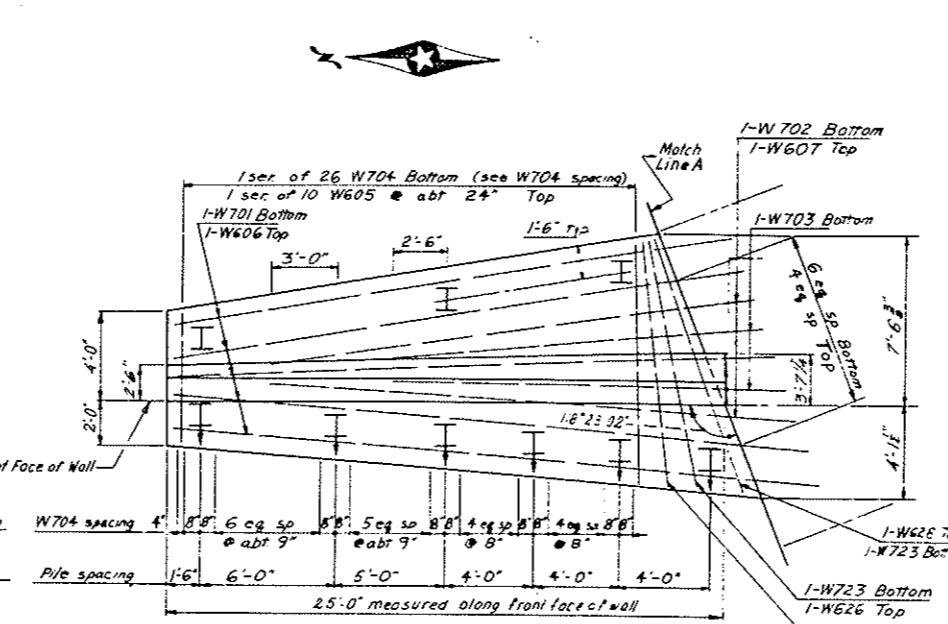
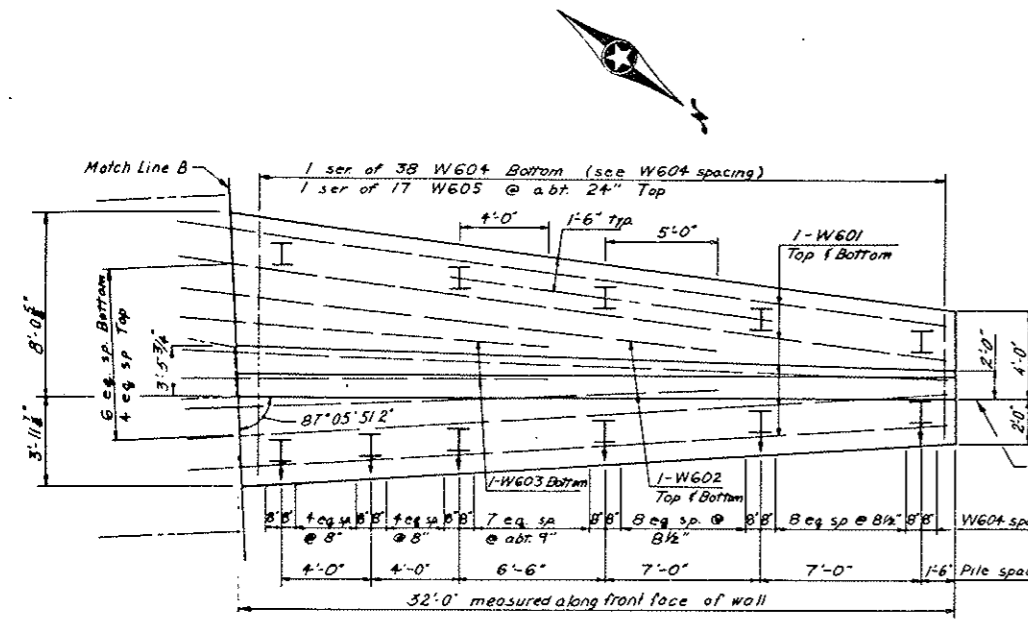


BRIDGE CODE	R.R. BRIDGE NO.	FED. ROAD DIST. NO.	STATE	PROJ. NO.	FISCAL YEAR	SHEET NO.	TOTAL SHEETS
X631	199	8	N.D.	MG-1-010 (OS) 917		46	

BILL OF REINFORCEMENT

BAR NO.	NO.	SIZE	LENGTH	TYPE	DIM. A	LOCATION	BAR NO.	NO.	SIZE	LENGTH	TYPE	DIM. A	LOCATION
WEST WINGWALL							EAST WINGWALL						
W501	10	6	34-9	Str.		Footing	W701	5	7	29-0	Str.		Footing
W512	4	6	24-6	Str.		Footing	W702	2	7	22-0	Str.		Footing
W523	2	6	17-0	Str.		Footing	W703	2	7	17-0	Str.		Footing
W604	1 Ser.	6	6-10	100	5-6	Footing	W704	1 Ser.	7	7-2	100	5-6	Footing
of 38			12-10		11-5		of 26			12-2		10-6	
W525	1 Ser.	6	6-10	100	5-5	Footing	W605	1 Ser.	6	6-10	100	5-6	Footing
of 17			12-10		11-5		of 10			11-10		10-6	
W526	2	6	23-6	Str.		Vertical	W606	5	6	29-0	Str.		Footing
W527	2	5	5-2	144	1-0	Vertical	W607	2	6	22-0	Str.		Footing
W1128	21	11	8-9	104	1-7	Footing	W1108	24	11	8-9	104	1-7	Footing
W528	32	6	6-0	104	1-0	Footing	W609	25	6	6-0	104	1-0	Footing
W529	32	5	5-7	104	1-0	Footing	W510	25	5	5-7	104	1-0	Footing
W530	1 Ser.	5	6-3	Str.		Vertical	W511	1 Ser.	5	12-3	Str.		Vertical
of 30			23-6				of 24			25-0			
W612	1 Ser.	6	6-3	Str.		Vertical	W612	1 Ser.	6	12-3	Str.		Vertical
of 30			23-6				of 24			25-0			
W531	7	6	7-0	Str.		Vertical	W513	8	6	7-0	Str.		Vertical
W532	7	9	10-0	Str.		Vertical	W914	8	9	11-0	Str.		Vertical
W1115	7	11	13-0	Str.		Vertical	W1115	8	11	15-0	Str.		Vertical
W533	2	6	8-0	128	5-6	Vertical	W616	2	6	14-0	128	11-6	Vertical
W514	5	31-8	Str.			Horizontal	W517	24	5	24-8	Str.		Horizontal
W515	2 Ser.	5	2-9	Str.		Horizontal	W518	2 Ser.	5	2-3	Str.		Horizontal
of 11			30-9				of 12			23-3			
W516	2	5	35-6	Str.		Horizontal	W519	2	5	27-6	Str.		Horizontal
W520	31	5	5-4	105	1-2	Vertical	W520	24	5	5-4	105	1-2	Vertical
W521	1 Ser.	5	5-2	105	1-0	Horizontal	W521	1 Ser.	5	5-2	105	1-0	Horizontal
of 6			5-8				of 12			6-2		2-0	
W522	1 Ser.	5	5-3	105	1-1	Horizontal	W522	1 Ser.	5	3-3	105	1-1	Horizontal
of 23			7-1				of 24			7-2		3-0	
W723	3	7	11-4	101	0-10	Footing	W623	2	6	11-2	101	0-8	Footing



QUANTITIES

Reinforcing Steel	12,975 lbs
Steel Piling (HP12x53)	1,300 Lin Ft
Class AE-1 Mod Concrete	1364 Cu Yd
Class I Excavation	110 Cu Yd
Structural Carbon Steel (A36)	556 lbs

WINGWALL DETAILS
BRIDGE B
BURLINGTON NORTHERN, INC.
RAILWAY UNDERPASSES
U.S. HIGHWAY NO. 10
MORTON COUNTY