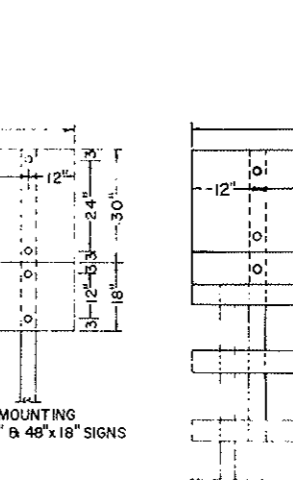
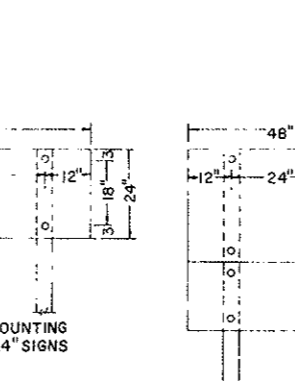
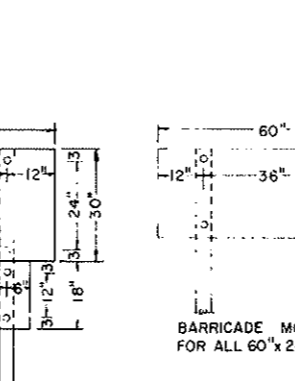
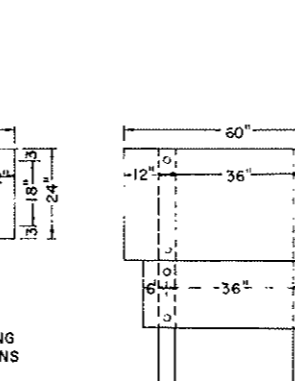
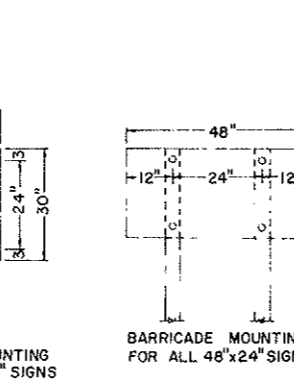
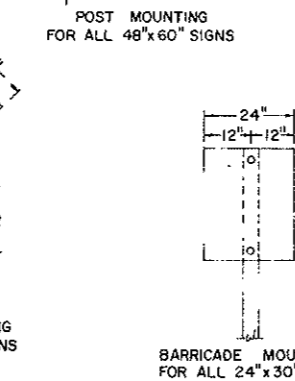
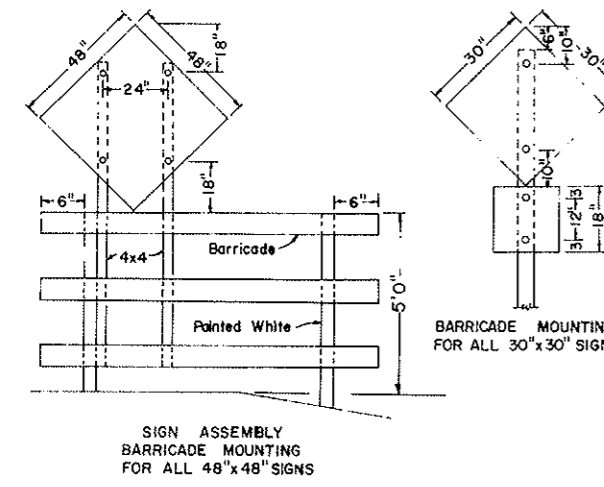
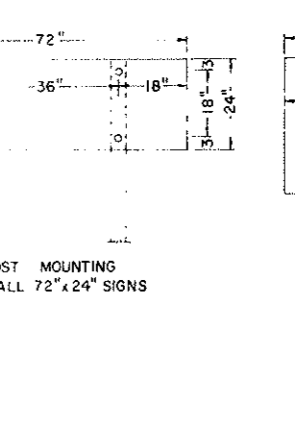
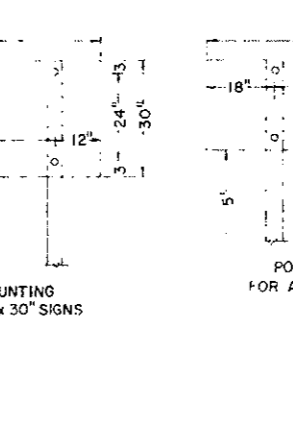
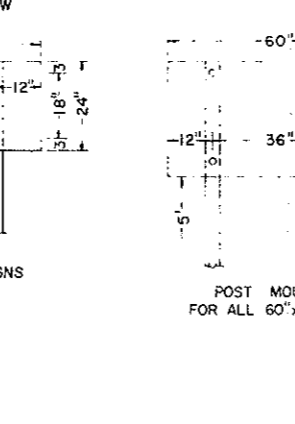
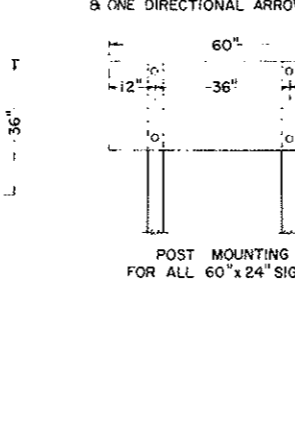
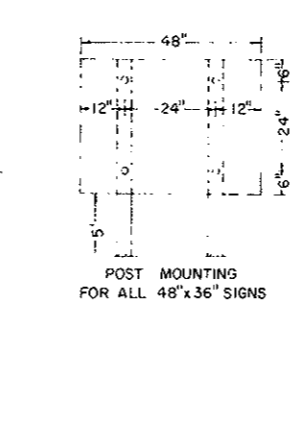
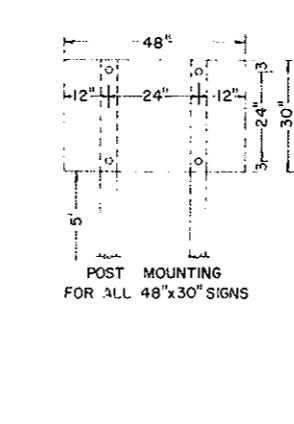
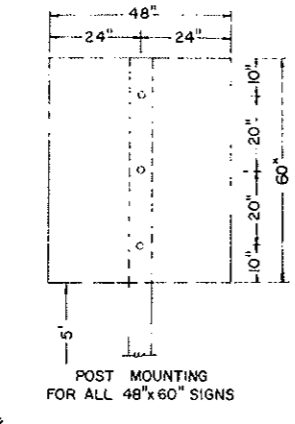
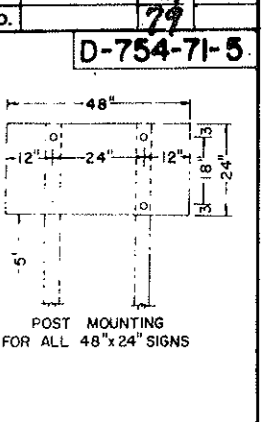
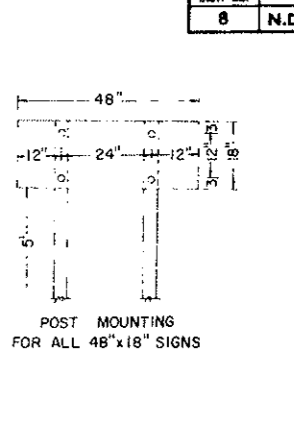
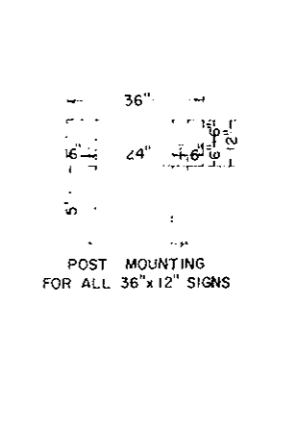
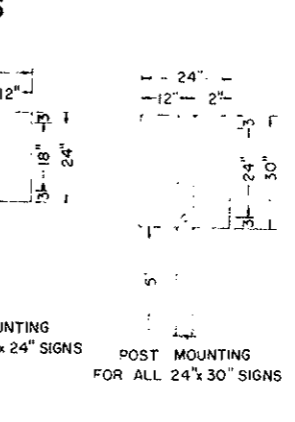
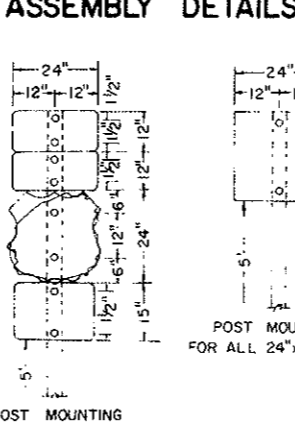
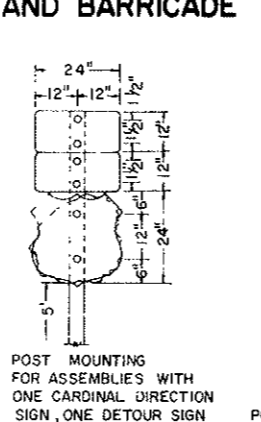
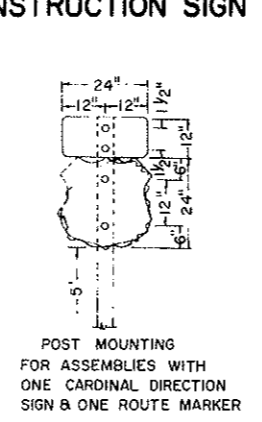
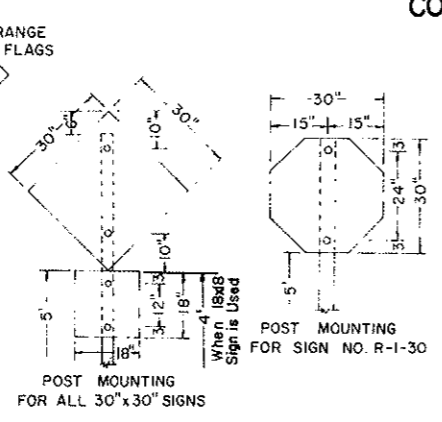
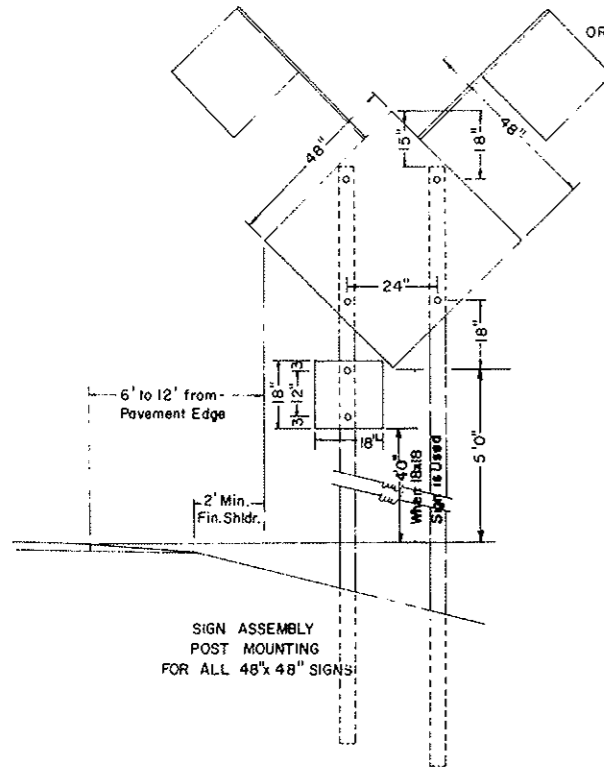
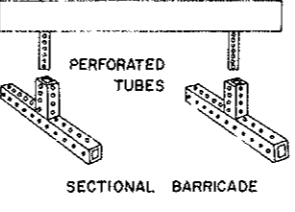
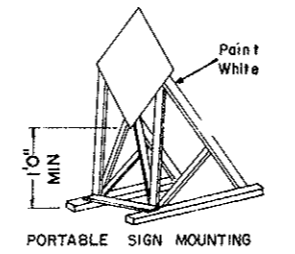
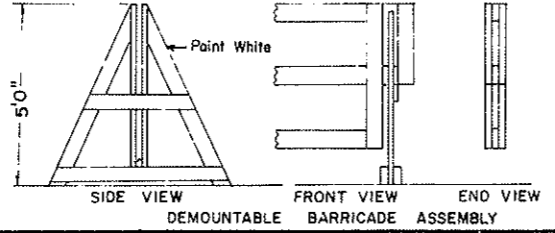
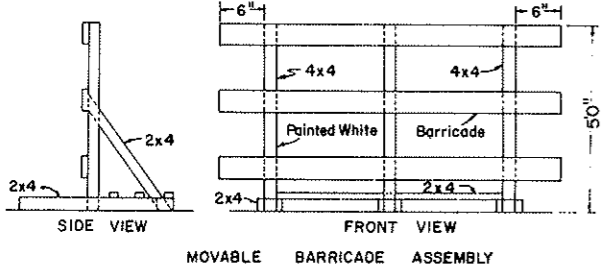
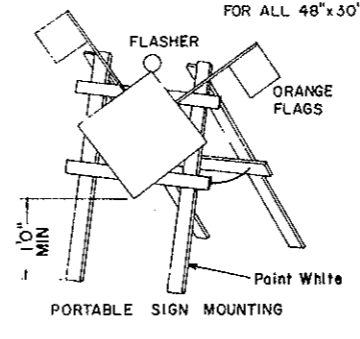
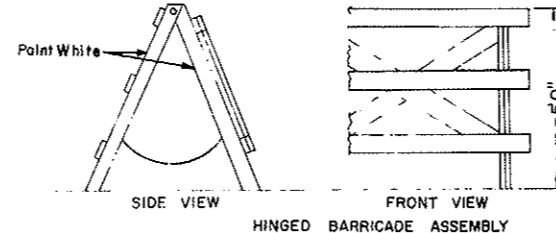
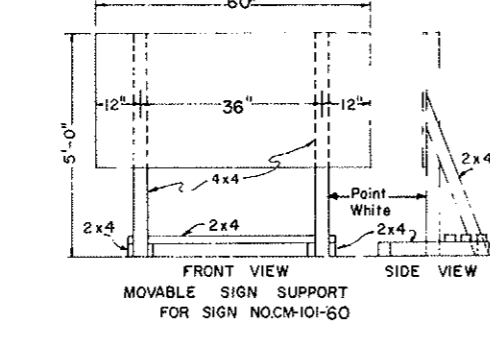
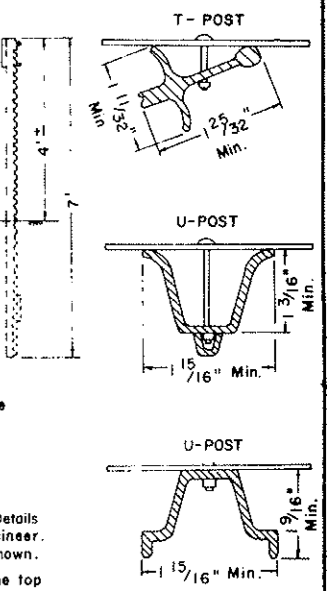


CONSTRUCTION SIGN AND BARRICADE ASSEMBLY DETAILS



DELINEATOR ATTACHMENT AND POST MOUNTING DETAILS



NOTES:
DELINEATOR POSTS: Typical fence post sections are shown in Attachment Details. Other types of metal fence posts may be substituted upon approval of the engineer. These substituted posts shall have reflectors attached similar to the ones shown.
BARRICADE MOUNTING SIGNS: The bottom of the sign shall be flush with the top of the top rail. Wood sign posts shall be 4x4 min. SFS or equivalent steel posts. See Sids. D-754-71 thru D-754-79 for construction sign and barricade location details. All barricades and barricade mounted signs shall be assembled with 3/8" bolts.
SIGN SUPPORTS: The sign supports shall be imbedded to a sufficient depth so that the signs will remain plumb throughout duration of the project. It is suggested that the min. depth of imbedment be 5'-0".
MATERIAL: All signs shall be .100" aluminum, 12 gage galv. steel, 1/2" plywood or other approved mat'l.
HOLES: All holes to be punched round for 3/8" bolts.

3-13-72		NORTH DAKOTA STATE HIGHWAY DEPARTMENT Submitted: <i>R.B. Howell</i> Design Engineer Recommended: <i>R. Whalley</i> Asst. Chief Engineer, Pre-Const. Approved: <i>R. Whalley</i> Chief Engineer
DATE	CHANGE	
6-5-72	Mounting Details	
9-19-73	Sign Size	