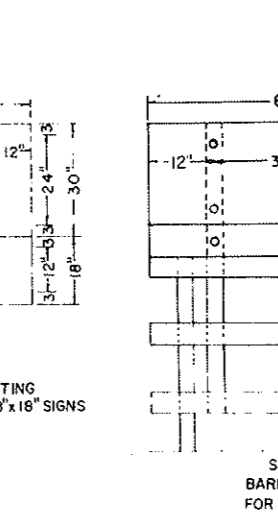
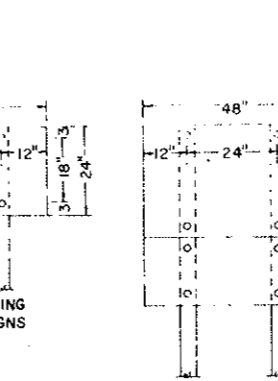
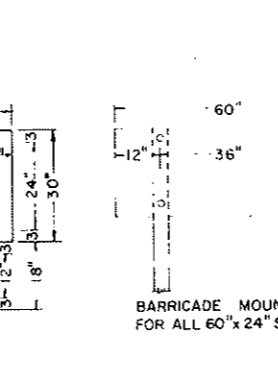
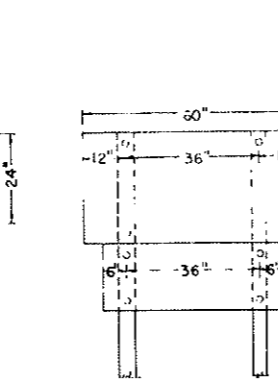
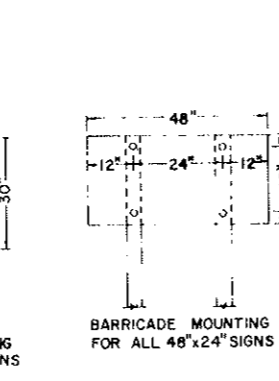
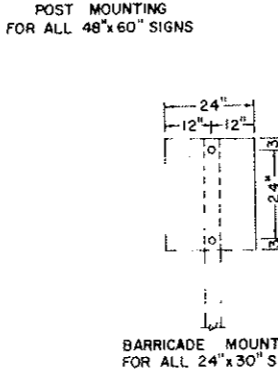
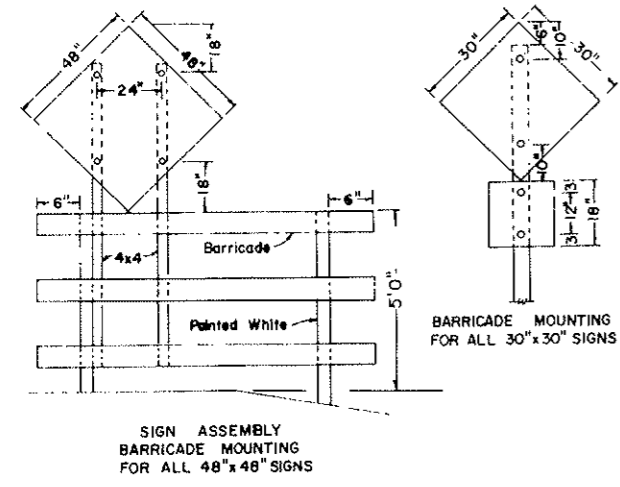
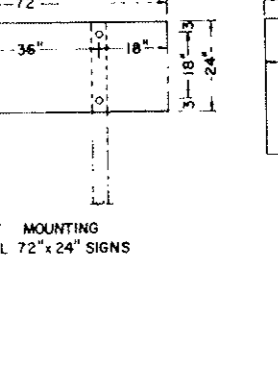
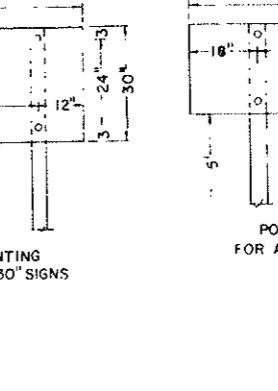
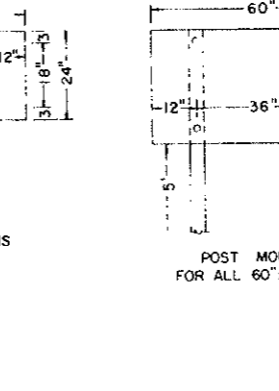
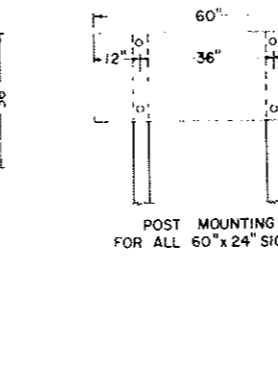
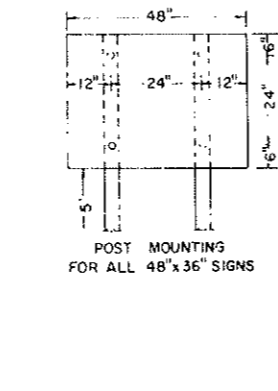
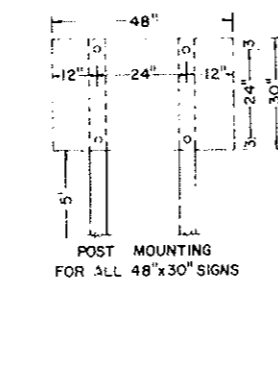
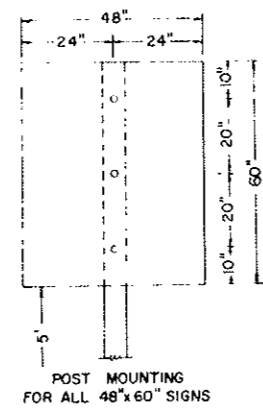
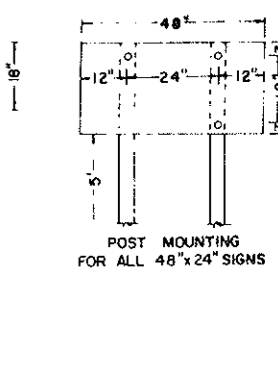
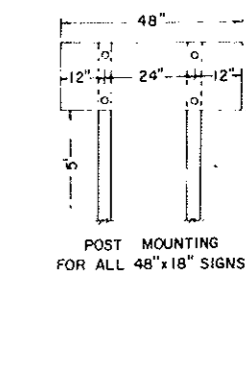
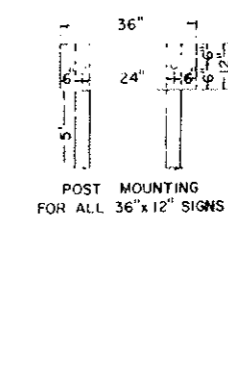
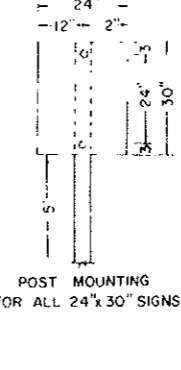
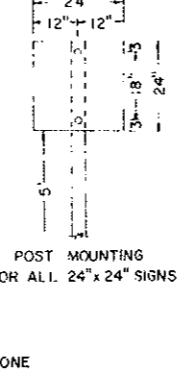
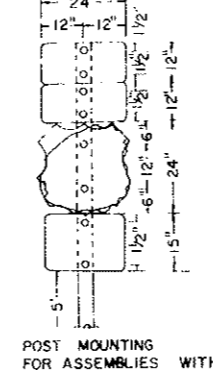
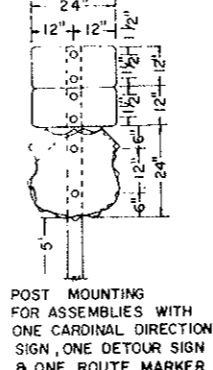
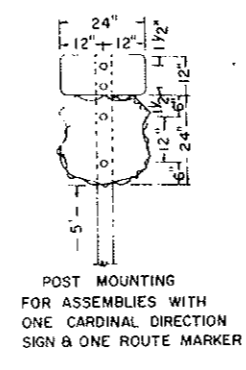
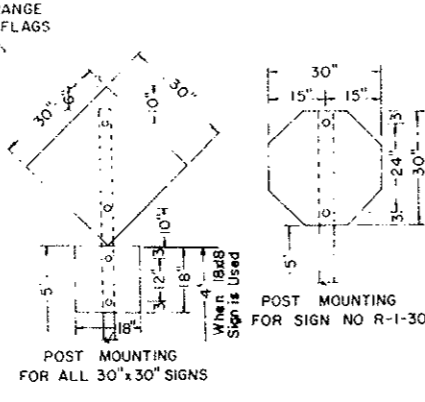
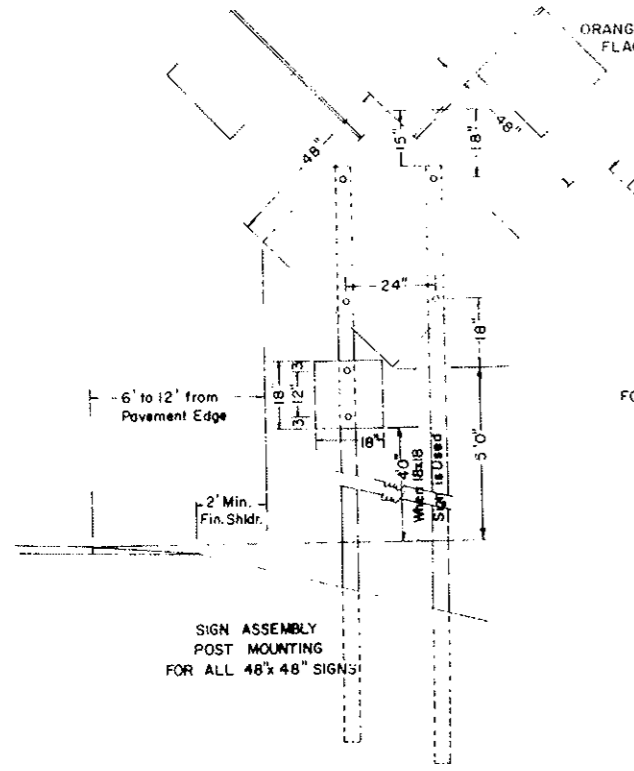
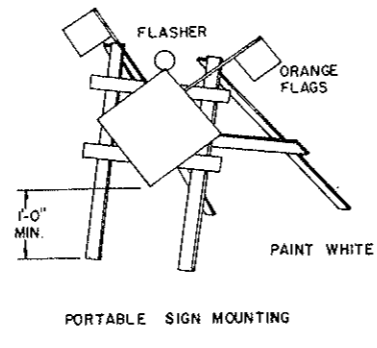
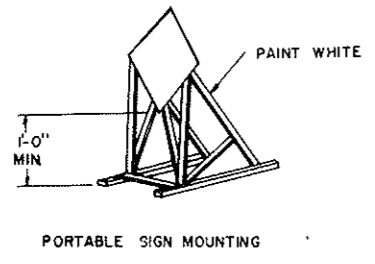
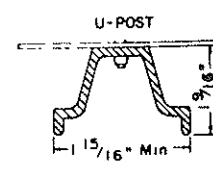
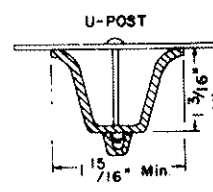
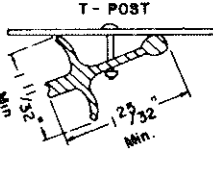


CONSTRUCTION SIGN AND BARRICADE ASSEMBLY DETAILS



DELINEATOR ATTACHMENT AND POST MOUNTING DETAILS



NOTES:
 DELINEATOR POSTS: Typical fence post sections are shown in Attachment Details. Other types of metal fence posts may be substituted upon approval of the engineer. These substituted posts shall have reflectors attached similar to the ones shown.
 BARRICADE MOUNTING SIGNS: The bottom of the sign shall be flush with the top of the top rail. Wood sign posts shall be 4x4 min SFS or equivalent steel posts. See Stds. D-754-5 thru D-754-9 for construction sign and barricade location details. All barricades and barricade mounted signs shall be assembled with 3/8" bolts.
 SIGN SUPPORTS: The sign supports shall be imbedded to a sufficient depth so that the signs will remain plumb throughout duration of the project. It is suggested that the min. depth of imbedment be 5'-0".
 MATERIAL: All signs shall be .100" aluminum, 12 gage galv steel, 1/2" plywood or other approved mat'l.

HOLES: All holes to be punched round for 3/8" bolts.

ALTERNATE MESSAGES: The signs that have alternate messages may have these alternate messages placed on a reflectorized plate without a border and this plate installed and removed as required.

2-17-78 REVISIONS	
DATE	CHANGE
8-21-78	DETAIL ADDED

NORTH DAKOTA STATE HIGHWAY DEPARTMENT
 Submitted: *[Signature]*
 Design Engineer
 Recommended: *[Signature]*
 Asst. Chief Engineer, Pre-Const.
 Approved: *[Signature]*
 Chief Engineer

CONSTRUCTION SIGN AND BARRICADE LOCATION DETAILS

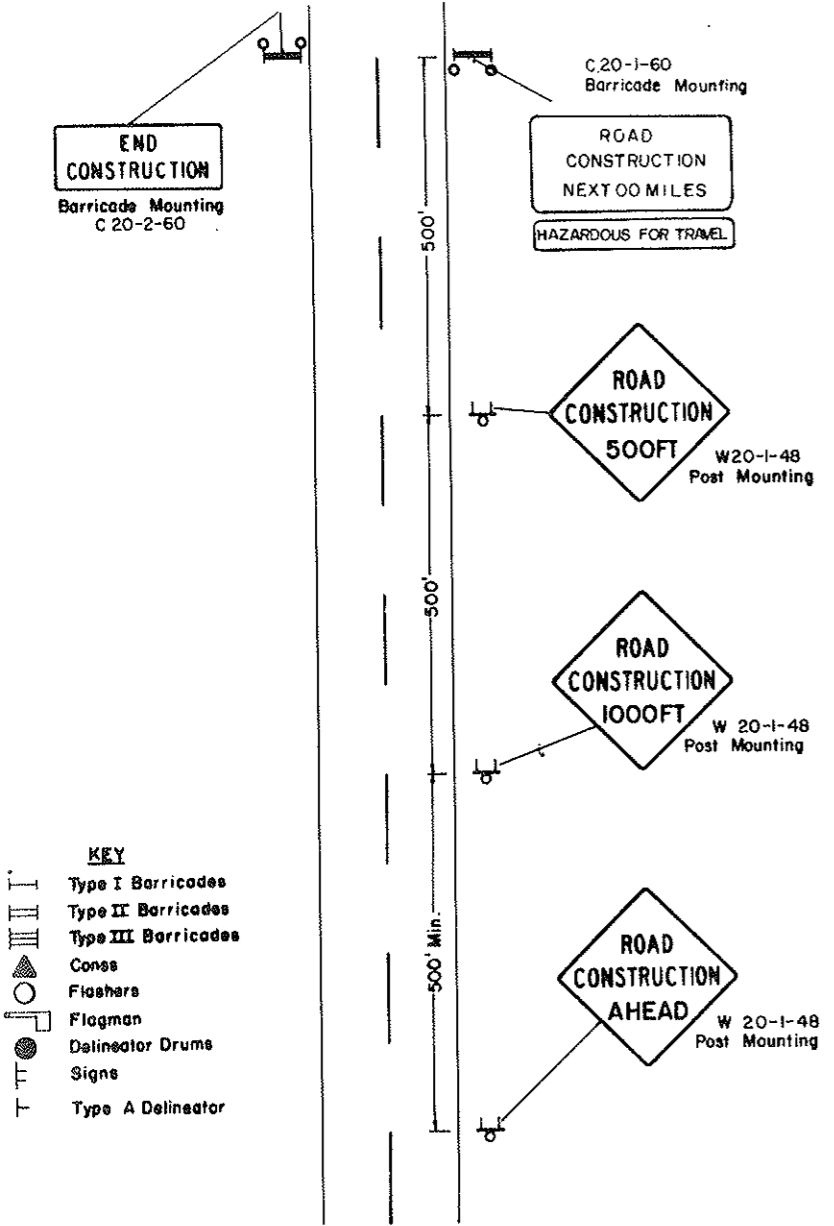
Note:
 Sign No. W22-4-48, W22-5-48, and W22-6a-54 shall be used on all projects where traffic is maintained. These signs shall be removed as work progresses and shall be removed when hazard ceases to exist. The W22-5-48 shall be installed min. of 500 feet in advance of work area or flagman ahead sign. The W22-4-48 and W22-6a-54 shall be installed a min. of 500 feet in advance of the W22-5-48 sign. Two lighted flashers shall be maintained in front of all intermediate signs if hazard remained at night.

Lighting: The flashers and steady burn lights shall be maintained as shown if danger exists at night or work area is closed to the traffic lane, the edge of the traffic lane on the work area side shall be illuminated by steady burn lights or reflectorized delineators or vertical panels spaced at 100 ft. centers. The flashers shall be placed above the barricade bar and above the warning signs.

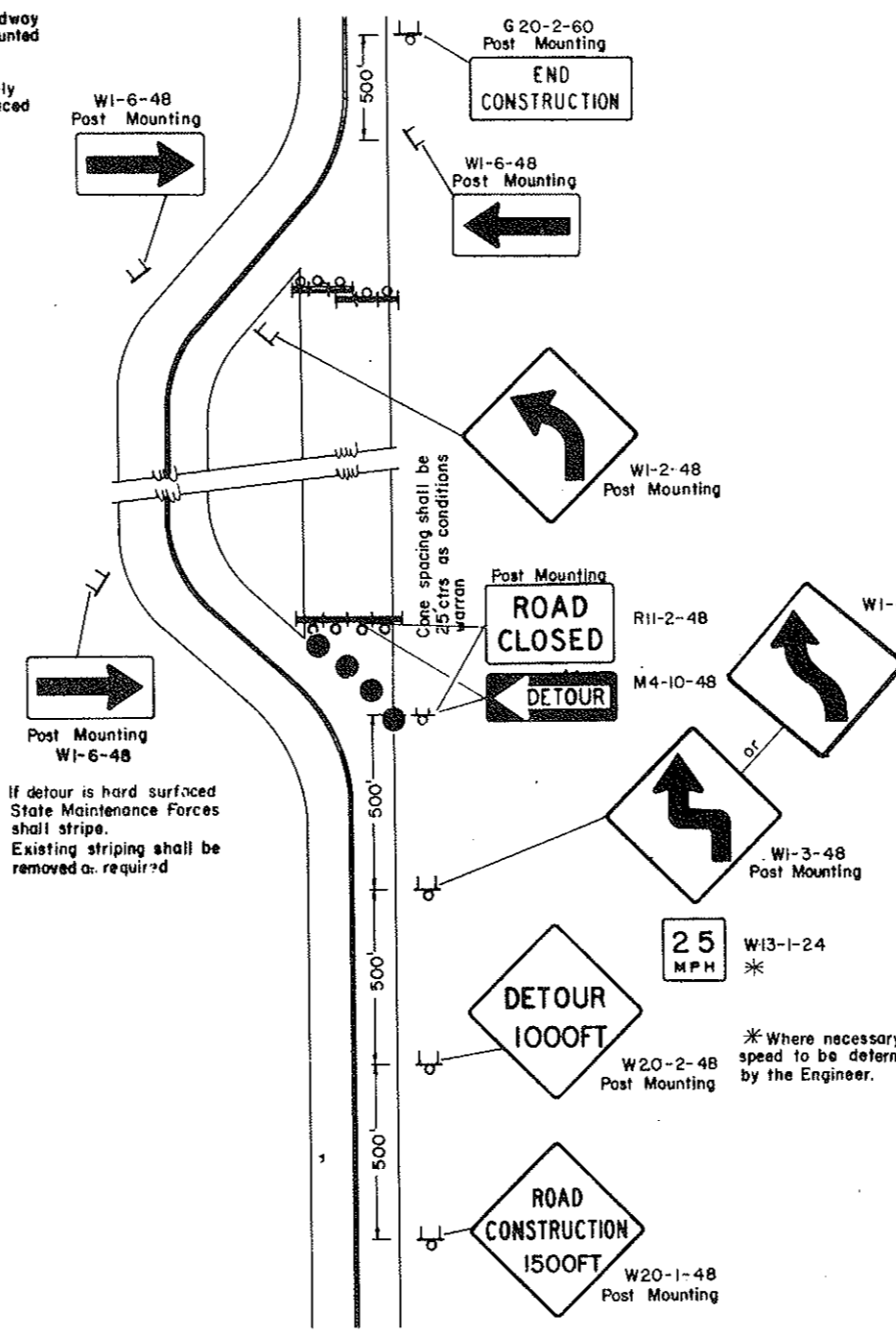
FLAGS: All advance warning signs shall have two orange warning flags 24" square mounted perpendicular to the edges of the diamond sign and at such a distance above the edges so that when flag is hung limp it will not touch the sign.

Where advance warning sign placed as shown interferes with permanent signs, The warning sign location shall be determined by the Engineer for best results. Messages shall be varied as required.

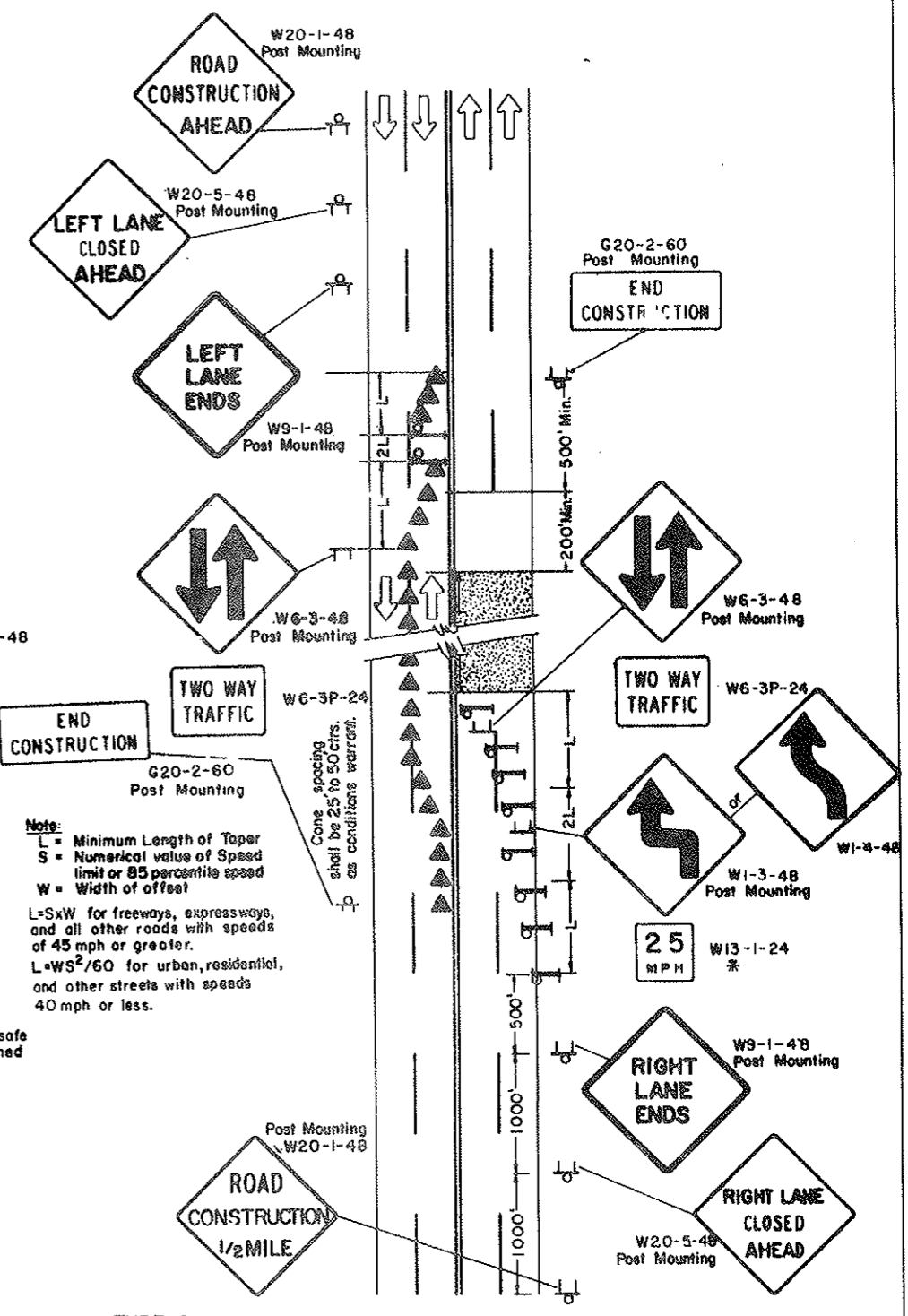
Mounting: Barricade shown to be placed on roadway shall be on a movable Assembly. Sign to be mounted on barricades shall be mounted with the sign bottom on the top of the top barricade bar. Intermediate Sign shall be on a movable assembly. Sign show to be placed on roadway shall be placed on movable assemblies.



TYPE A
 CONSTRUCTION SIGN LAYOUT
 2 & 4 Lane Highway when traffic is maintained.
 (Sign shown for one end only)



TYPE B
 CONSTRUCTION SIGN LAYOUT
 2 Lane Highway where roadway is closed and detour is provided.
 (Sign shown for one direction of travel only).



TYPE C
 CONSTRUCTION SIGN LAYOUT
 4 Lane Undivided Highway with half the roadway closed

7-15-78	
REVISIONS	
DATE	CHANGE
8-21-78	Note Change

NORTH DAKOTA
 STATE HIGHWAY DEPARTMENT

Submitted: *Richard Hoff*
 Design Engineer

Recommended: _____
 Asst. Chief Engineer, Pre-Const.

Approved: _____
 Chief Engineer