

S U M M A R Y

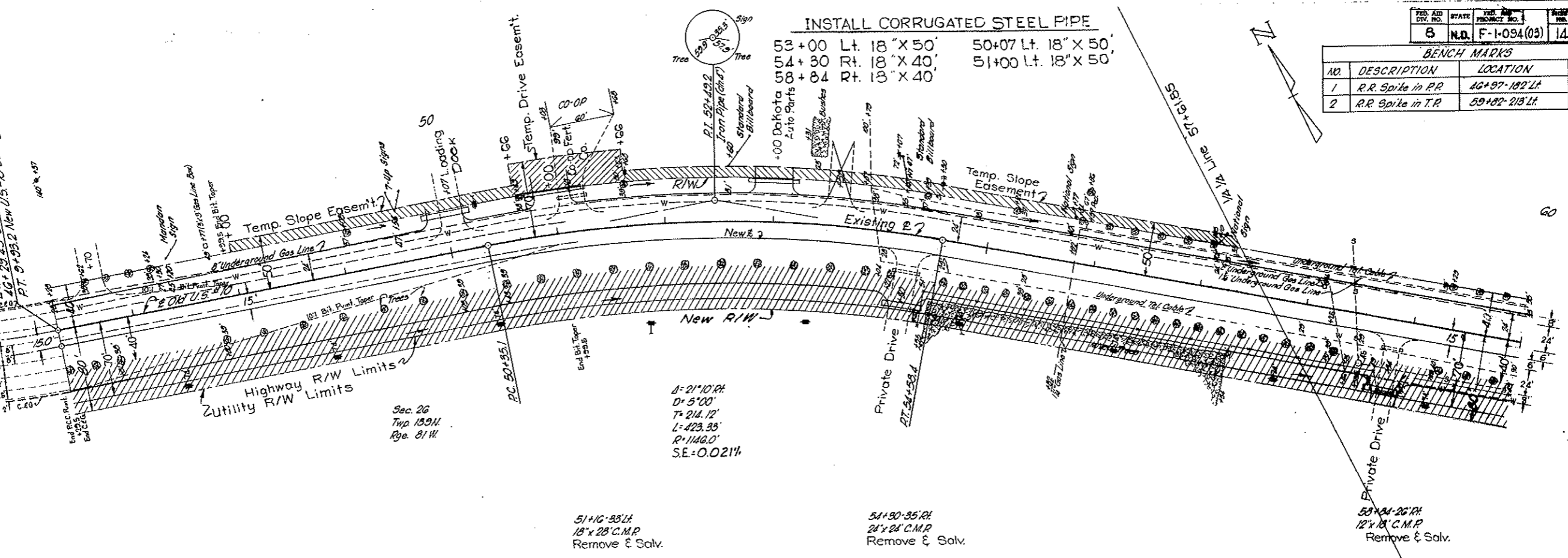
<u>DESIGNATED PIPE</u>			<u>OPTIONAL PIPE</u>		
18"x4216 L.F.	CSP (.064")		43"x27"x92'	CSP (.064")	2 E.S. (.079")
30"x86'	RCP, Cl. III	2 E.S.	43"x27"x92'	CAP (.075")	2 E.S. (.075")
29"x18"x80'	RCP Arch, Cl. IV	2 E.S.	58"x36"x32'	CSP (.064")	2 E.S. (.109")
44"x27"x276'	RCP Arch, Cl. III	4 E.S.	58"x36"x32'	CAP (.135")	2 E.S. (.105")
58"x36"x78'	RCP Arch, Cl. II	2 E.S.			
73"x45"x84'	RCP Arch, Cl. II	2 E.S.			
50"x31"x150'	CSP Arch (.064")				

Project
EQUATION:
46+29.49 Old U.S. #10 And. Begin
PT. 51+33.2 New U.S. #10 Survey Bl. 156'

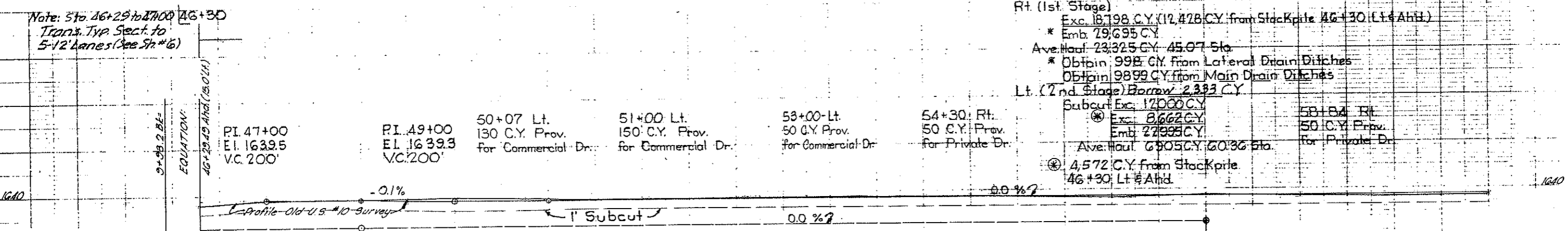
FED. AID DIST. NO.	STATE	FED. PROJECT NO.	SHEET NO.	TOTAL SHEETS
8	N.D.	F-1-094(03)	14	

BENCH MARKS		
NO.	DESCRIPTION	ELEV.
1	R.R. Spike in P.R.	1639.55
2	R.R. Spike in T.R.	1640.14

INSTALL CORRUGATED STEEL PIPE
 53+00 Lt. 18" X 50' 50+07 Lt. 18" X 50'
 54+30 Rt. 18" X 40' 51+00 Lt. 18" X 50'
 58+84 Rt. 18" X 40'



Note: Sta. 46+29 to 47+00
Trans. Typ. Sect. to
5-12 Lanes (See Sh. #6)



Rt. (1st. Stage)
 Exc. 18,198 C.Y. (12,478 C.Y. from Stockpile 46+30 Lt. 5 Ahd.)
 * Emb. 29,695 C.Y.
 Ave. Haul: 23,325 C.Y. 45.07 Sta.
 * Obtain 9899 C.Y. from Lateral Drain Ditches
 Obtain 9899 C.Y. from Main Drain Ditches
 Lt. (2nd. Stage) Borrow 2,283 C.Y.
 Subcut Exc. 12,000 C.Y.
 * Exc. 8,662 C.Y.
 Emb. 22,995 C.Y.
 Ave. Haul: 6,805 C.Y. 60.36 Sta.
 * 4,572 C.Y. from Stockpile 46+30 Lt. 5 Ahd.

