

INSTALL PIPE CULVERTS

61+75 @ 29" X 18" X 80' RCP Arch C.I.V., 2-RCES

REMOVAL OF STRUCTURE

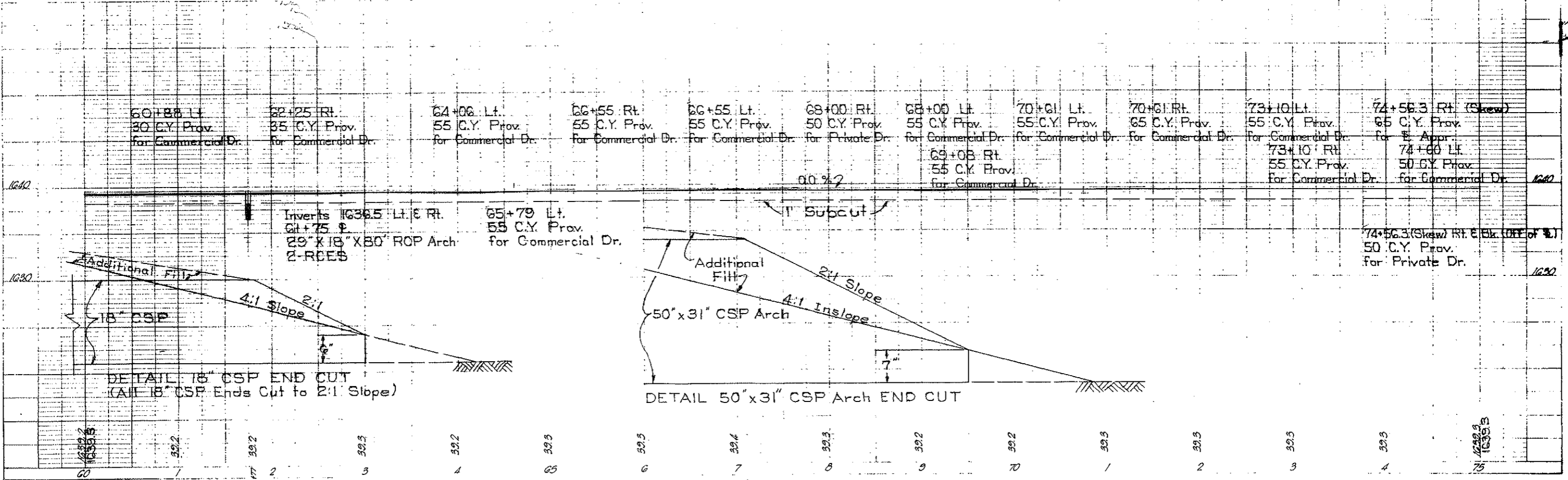
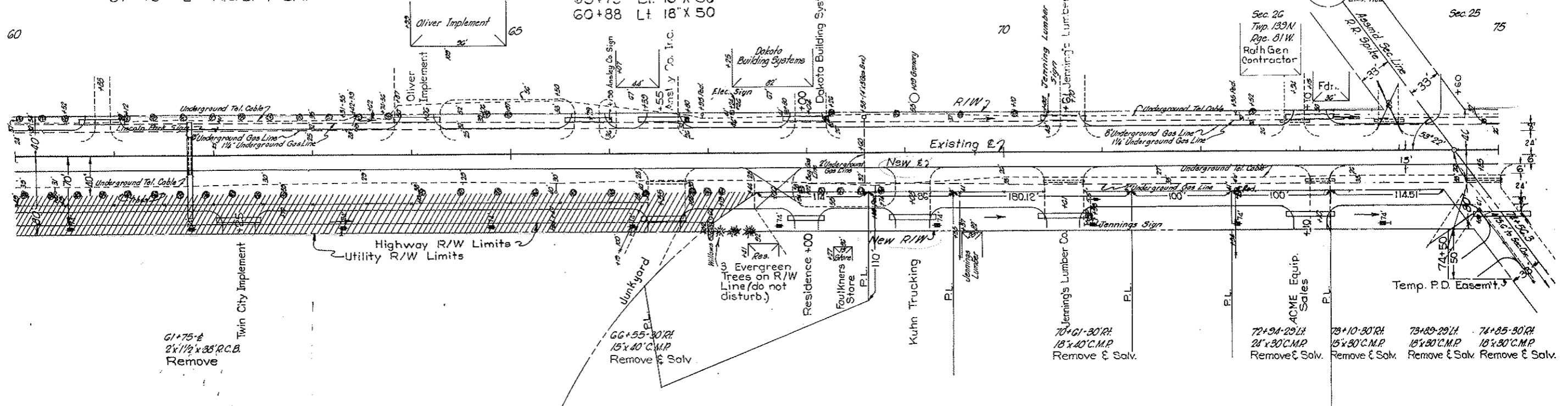
61+75 @ R.C.B. 1-EA.

INSTALL CORRUGATED STEEL PIPE

62+25 Rt.	15' X 50'	68+25 Rt.	18' X 50'
64+02 Lt.	18' X 50'	70+21 Rt.	18' X 50'
66+55 Rt.	18' X 50'	73+10 Lt.	18' X 50'
68+55 Lt.	18' X 50'	74+56.3 Rt.	18' X 50'
69+00 Rt.	18' X 40'	73+10 Rt.	18' X 50'
68+00 Lt.	18' X 50'	74+60 Lt.	18' X 50'
65+79 Lt.	18' X 50'		
60+88 Lt.	18' X 50'		

FED. AID DIV. NO.	STATE	FED. AID PROJECT NO.	SHEET NO.	TOTAL SHEETS
8	N.D.	F-1-094(03)	15	

BENCH MARK			
NO.	DESCRIPTION	LOCATION	ELEV.
3	R.R. Spike in T.P.	72+73-138 Lt.	1640.05



DETAIL 18" CSP END CUT  
(All 18" CSP Ends Cut to 2:1 Slope)

DETAIL 50" x 31" CSP Arch END CUT

60+88 Lt. 30 C.Y. Prov. for Commercial Dr.	62+25 Rt. 35 C.Y. Prov. for Commercial Dr.	64+06 Lt. 55 C.Y. Prov. for Commercial Dr.	66+55 Rt. 55 C.Y. Prov. for Commercial Dr.	66+55 Lt. 55 C.Y. Prov. for Commercial Dr.	68+00 Rt. 50 C.Y. Prov. for Private Dr.	68+00 Lt. 55 C.Y. Prov. for Commercial Dr.	70+61 Lt. 55 C.Y. Prov. for Commercial Dr.	70+61 Rt. 65 C.Y. Prov. for Commercial Dr.	73+10 Lt. 55 C.Y. Prov. for Commercial Dr.	74+56.3 Rt. (Skew) 65 C.Y. Prov. for E. Appr.	74+60 Lt. 50 C.Y. Prov. for Commercial Dr.
--	--	--	--	--	---	--	--	--	--	---	--

Inverts 1636.5 Lt. & Rt.  
61+75 @  
29" X 18" X 80' RCP Arch  
2-RCES

65+79 Lt.  
55 C.Y. Prov.  
for Commercial Dr.

74+56.3 (Skew) Rt. & Blk. (Off of S.)  
50 C.Y. Prov.  
for Private Dr.

FED. AID DIV. NO.	STATE	FED. AID PROJECT NO.	SHEET NO.	TOTAL SHEETS
8	N.D.	F-1-094 (03)	16	

BENCH MARK			
NO.	DESCRIPTION	LOCATION	ELEV.
4	R.R. Spike in T.P.	84+17-207' Lt.	1640.78

**INSTALL CORRUGATED STEEL PIPE**

- 76+56 Lt. 18" X 50'
- 77+40 Rt. 18" X 50'
- 79+35 Rt. 18" X 50'
- 81+40 Rt. 18" X 50'
- 82+57 Lt. 18" X 50'
- 77+40 Lt. 18" X 50'
- 80+20 Lt. 18" X 50'
- 84+30 Lt. 18" X 50'
- 85+75 Rt. 18" X 40'
- 80+70 Lt. 18" X 50'
- 87+89 Lt. 18" X 50'
- 89+20 Lt. 18" X 40'
- 86+46 Lt. 18" X 50'

**INSTALL PIPE CULVERTS**

83+01.8 ± 58" X 36" X 78' RCP Arch Cl. II, 2-RCS

**INSTALL CORRUGATED METAL PIPE**

83+01.8 Lt. 58" X 36" X 32' Arch 2-M.E.S.

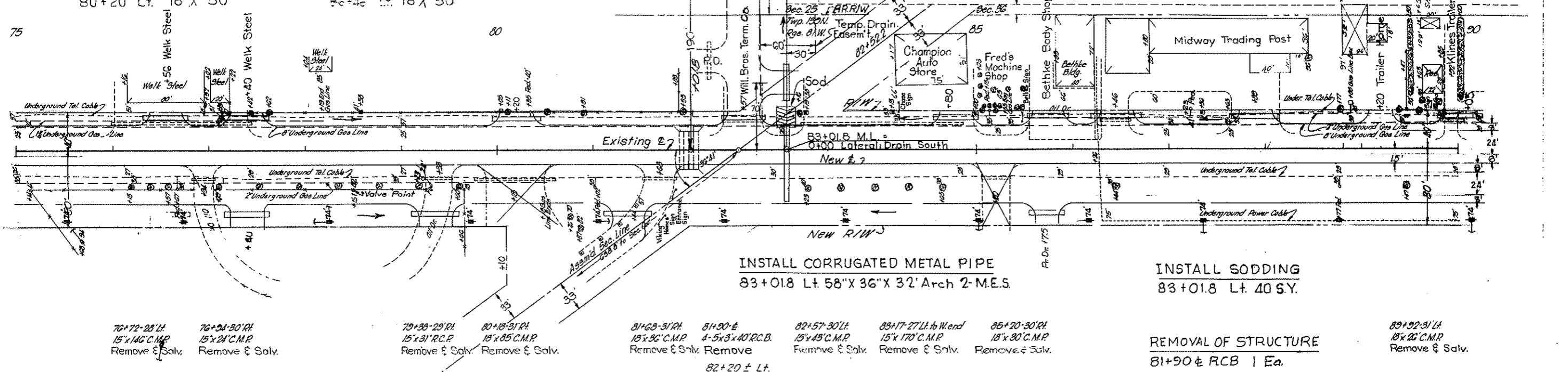
**INSTALL SODDING**

83+01.8 Lt. 40 S.Y.

**REMOVAL OF STRUCTURE**

81+90 ± RCB 1 Ea.

89+92-91' Lt.  
18' X 25' C.M.P.  
Remove & Salv.



76+72-28' Lt.  
15' X 140' C.M.P.  
Remove & Salv.

76+24-30' Rt.  
15' X 21' C.M.P.  
Remove & Salv.

79+39-29' Rt.  
15' X 31' R.C.P.  
Remove & Salv.

80+18-31' Rt.  
18' X 85' C.M.P.  
Remove & Salv.

81+68-31' Rt.  
18' X 36' C.M.P.  
Remove & Salv.

81+90 ±  
4-5' X 3' X 40' R.C.B.  
Remove

82+57-30' Lt.  
15' X 45' C.M.P.  
Remove & Salv.

83+17-27' Lt. to Ward  
15' X 170' C.M.P.  
Remove & Salv.

85+20-30' Rt.  
18' X 30' C.M.P.  
Remove & Salv.

82+20 ± Lt.  
18" RCP  
To Remain

76+56 Lt.  
55 C.Y. Prov.  
for Commercial Dr.

77+40 Lt. & Rt.  
110 C.Y. Prov.  
for Commercial Dr.

80+20 Lt.  
50 C.Y. Prov.  
for Commercial Dr.

79+35 Rt.  
55 C.Y. Prov.  
for Comm. Dr.

81+40 Rt.  
85 C.Y. Prov.  
for Comm. Dr.

82+57 Lt. & Ahd.  
50 C.Y. Prov.  
for Private Dr.

82+57 Lt.  
55 C.Y. Prov.  
for Commercial Dr.

84+80 Lt.  
55 C.Y. Prov.  
for Commercial Dr.

85+75 Rt.  
40 C.Y. Prov.  
for Private Dr.

86+46 Lt.  
55 C.Y. Prov.  
for Commercial Dr.

P.I. 88+00  
Elev. 1639.8  
V.C. 600'

85+75 Lt.  
55 C.Y. Prov.  
for Commercial Dr.

87+89 Lt.  
55 C.Y. Prov.  
for Commercial Dr.

89+20 Lt.  
40 C.Y. Prov.  
for Private Dr.

Inverts 1634.7 Lt. & Rt.  
83+01.8 ±  
58" X 36" X 78' RCP Arch  
2-RCS

75	1639.5	1639.3	6	39.3	7	39.3	8	39.5	9	39.4	80	39.3	1	39.2	81	39.2	3	39.2	4	39.3	85	39.3	6	39.3	7	39.3	39.3	39.3	8	39.3	39.2	9	39.4	39.1	80	1639.1	1639.0
----	--------	--------	---	------	---	------	---	------	---	------	----	------	---	------	----	------	---	------	---	------	----	------	---	------	---	------	------	------	---	------	------	---	------	------	----	--------	--------