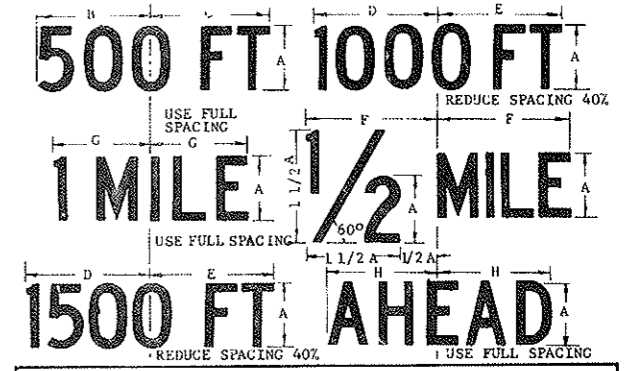
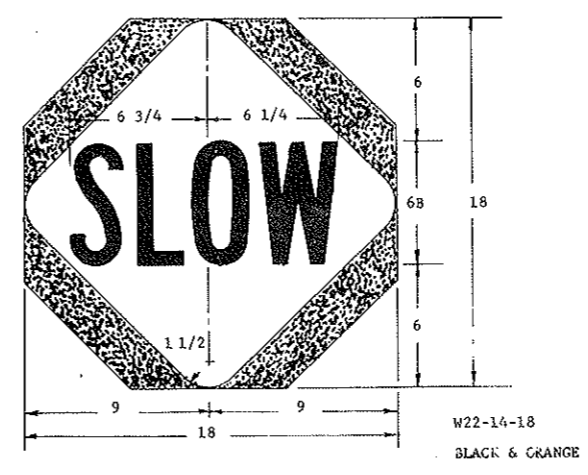
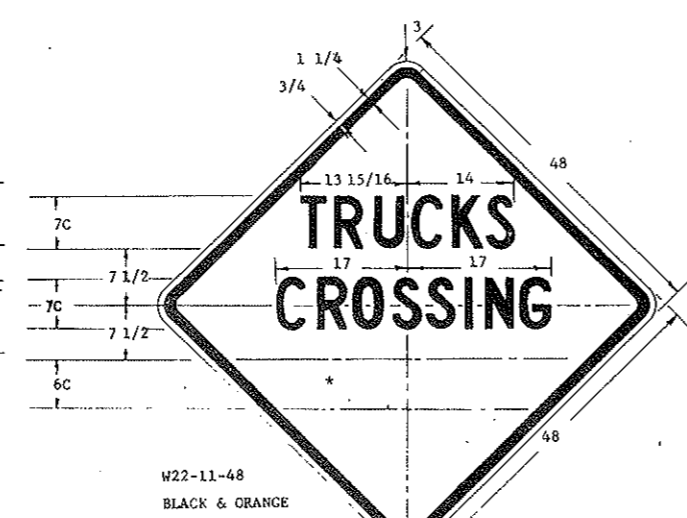
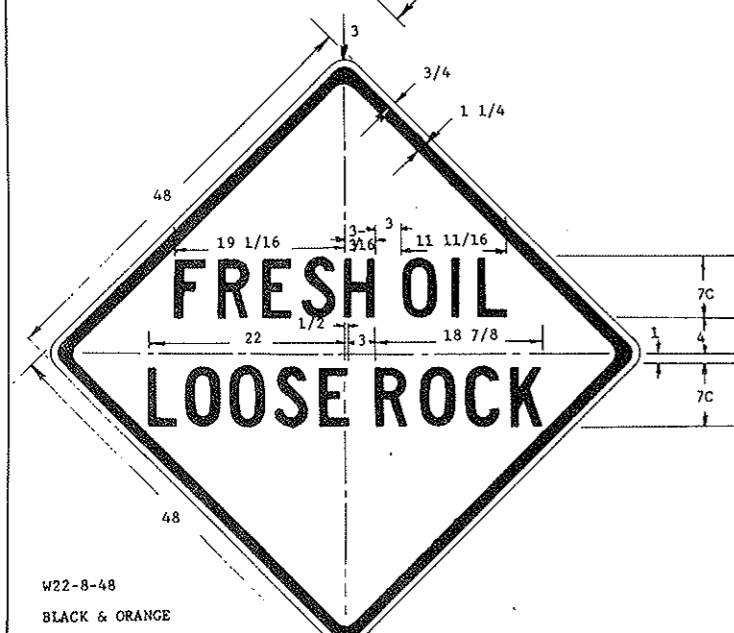
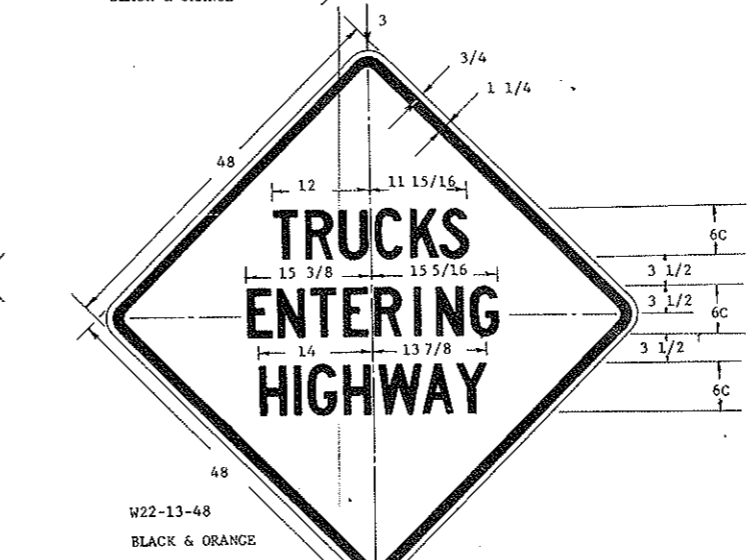
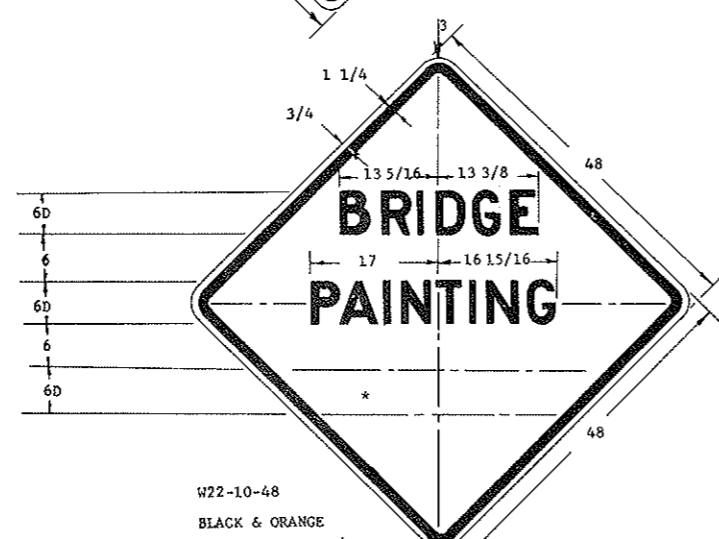
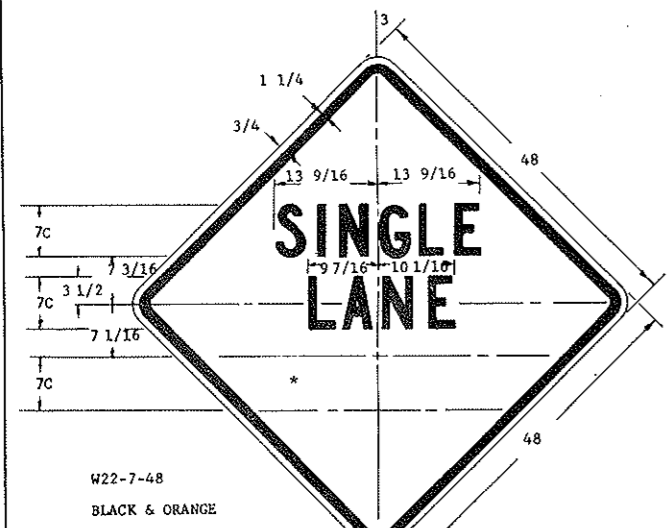
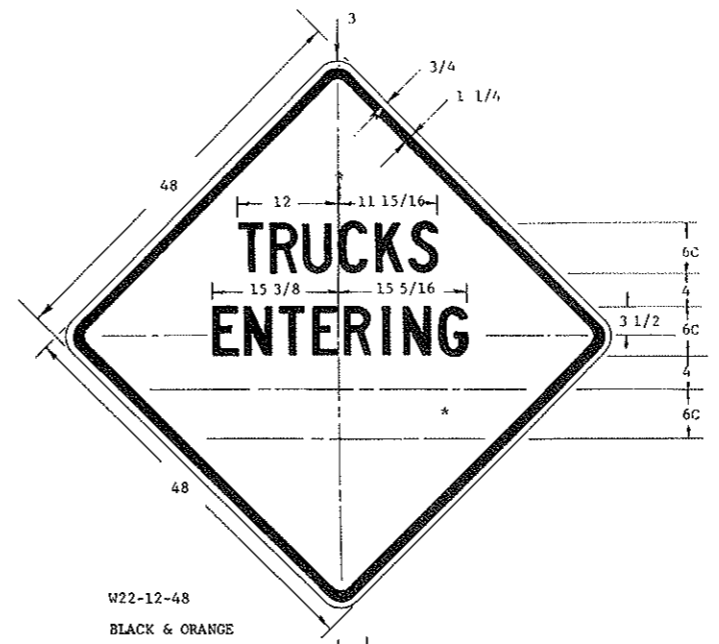
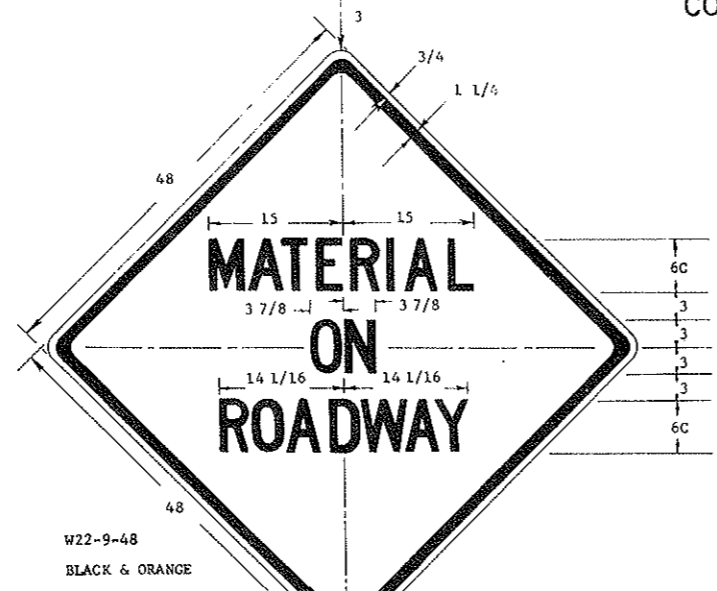
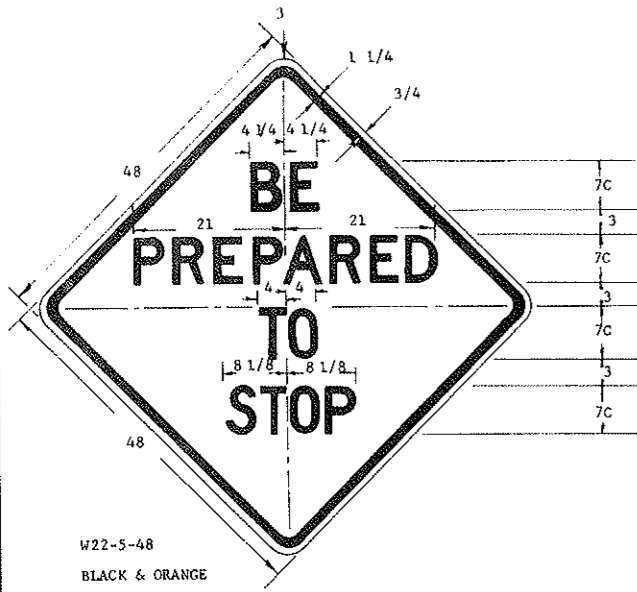


CONSTRUCTION SIGN DETAILS



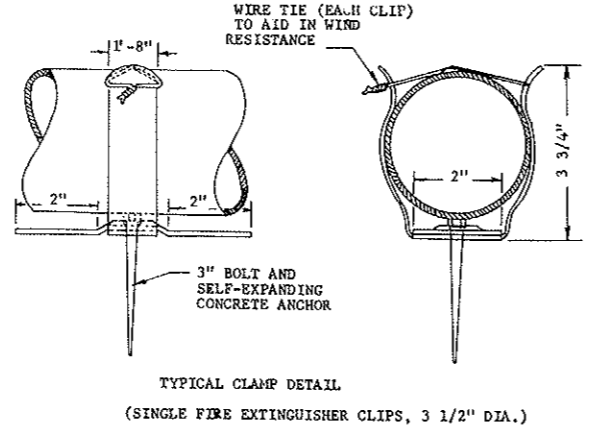
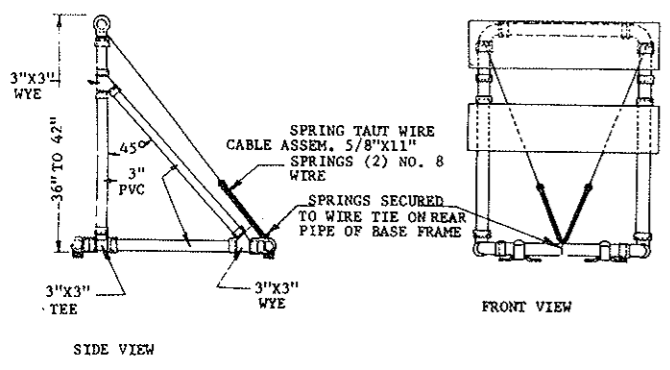
DIMENSIONS (INCHES)							
A	B	C	D	E	F	G	H
4C	6-7/8	7	7-1/2	8	8-5/16	6-1/16	7
5C	8-3/4	8-13/16	9-3/8	10	10-7/16	7-5/8	8-3/4
6C	10-3/8	10-1/2	11-1/4	12	12-1/2	9-1/8	10-1/2
7C	12	12-3/16	13-1/8	14	14-9/16	10-5/8	12-1/4
8C	13-3/4	14	15	16	16-5/8	12-1/8	14
4D	8-1/8	8-5/8	8-1/2	9	9	7-3/16	8-11/16
5D	10-3/16	10-13/16	11-5/8	11-1/4	11-1/4	9-1/2	10-7/8
6D	12-3/16	12-15/16	12-3/4	13-1/2	13-1/2	11-13/16	13-1/8
7D	14-1/4	15-1/8	14-7/8	15-3/4	15-3/4	13-1/16	15-1/2
8D	16-1/4	17-1/4	17	18	18	14-3/8	17-7/16

MESSAGES AND BORDERS: THE MESSAGES AND BORDERS SHALL BE SCREENED ON REFLECTIVE SHEETING OR INSTALLED USING PIGMENTED PLASTIC SHEETING CONFORMING TO THE REQUIREMENT OF SEC. 894-3.5 OF THE STD. SPECIFICATIONS. THE PIGMENTED PLASTIC FILM SHALL BE INSTALLED IN ACCORDANCE WITH THE REFLECTIVE SHEETING MANUFACTURERS RECOMMENDATIONS. THE BORDERS SHALL HAVE THE RADII AND WIDTH SHOWN ON THE PLANS. THE LETTERS SHALL BE FABRICATED IN ACCORDANCE WITH THE STANDARD LETTER GUIDE OF THE HEIGHT AND SERIES SHOWN ON THE PLANS. THE DETAILS OF THESE LETTERS MAY BE OBTAINED FROM THE STATE HIGHWAY DEPARTMENT OR THE SHEETING MANUFACTURER.

NOTE: ALL SIGNS SHALL HAVE REFLECTORIZED MESSAGE BORDER AND BACKGROUND, UNLESS SHOWN OTHERWISE ON THE PLANS. IN NO CASE IS THE COLOR BLACK REFLECTORIZED.

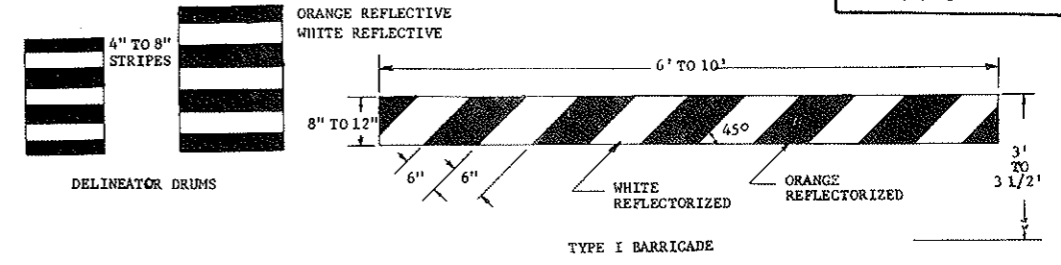
2-17-78		NORTH DAKOTA STATE HIGHWAY DEPARTMENT
REVISIONS		
DATE	CHANGE	Submitted: <i>[Signature]</i> Design Engineer
		Recommended: Asst. Chief Engineer, Pre-Constr.
		Approved: <i>[Signature]</i> Chief Engineer

BARRICADE DETAILS



DELINEATOR DRUMS

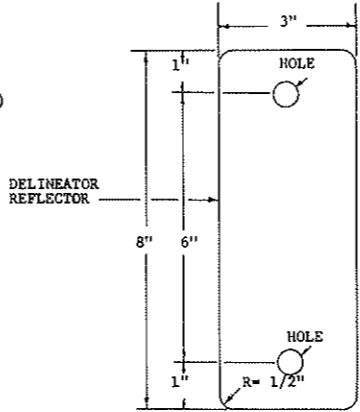
THE MARKINGS ON DRUMS SHALL BE ORANGE AND WHITE STRIPES 4 TO 8 INCHES WIDE. THERE SHALL BE AT LEAST THREE ORANGE AND TWO WHITE STRIPES. WHERE DRUMS HAVE RIBS OR OR INDENTATION THERE SHALL BE NO REFLECTORIZED SHEETING IN THIS AREA. THIS SPACE SHALL BE PAINTED ORANGE AND SHALL BE NO MORE THAN 2 INCHES WIDE. THE STRIPE COLOR SHALL BE PAINTED AT THESE POINTS (ORANGE ABOVE WHITE BELOW OR WHITE ABOVE AND ORANGE BELOW). THE DRUM SURFACE SHALL BE PREPARED AS RECOMMENDED BY THE SHEETING MANUFACTURER BEFORE REFLECTIVE SHEETING IS APPLIED.



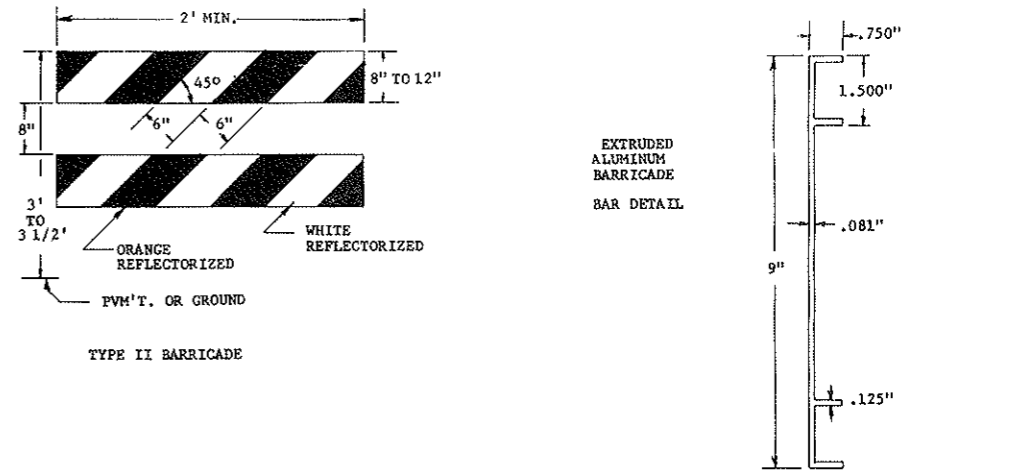
NOTE:

THE PIPE, WYES, TEES AND ELBOWS USED TO CONSTRUCT TYPE II BARRICADES (SPECIAL) SHALL CONFORM TO THE REQUIREMENTS OF ASTM DESIGNATION: D 2241 FOR PVC 1120 OR 1220, SDR 21, PRESSURE RATING 200 P.S.I. THE WYES, TEES AND ELBOWS SHALL CONFORM TO THE REQUIREMENTS OF ASTM DESIGNATION: D 2466, TYPE II, GRADE 1. ALL JOINTS SHALL BE SLIP-FIT AND SHALL NOT BE THREADED OR CEMENTED.

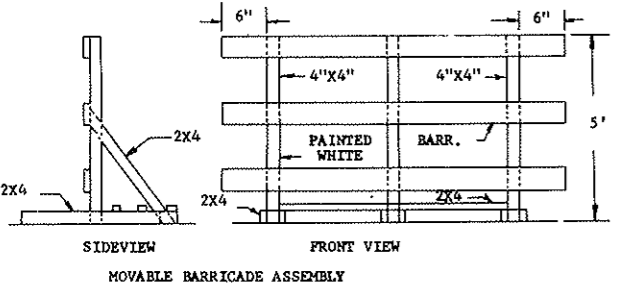
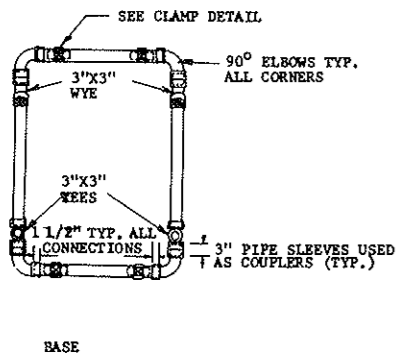
THE 9" X 48" BARRICADE RAILS SHALL BE FABRICATED FROM 0.025" ANODIZED ALUMINUM AND SHALL BE ATTACHED WITH 1 INCH NO. 14 PAN HEAD METAL SCREWS. COLORS: REFLECTIVE ORANGE AND REFLECTIVE WHITE.



3" x 8" - 18 GAUGE GALVANIZED STEEL SHEETS, OR .060" ALUMINUM PLATE WITH WHITE REFLECTIVE SHEETING (ENCAPSULATED LENS) AS SPECIFIED IN SECTION 894 OF THE STANDARD SPECIFICATIONS.

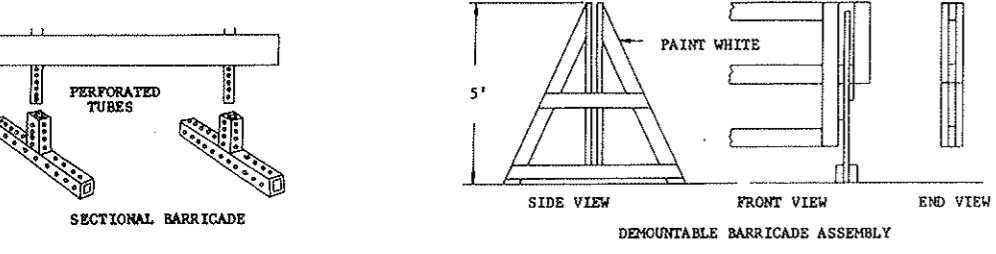
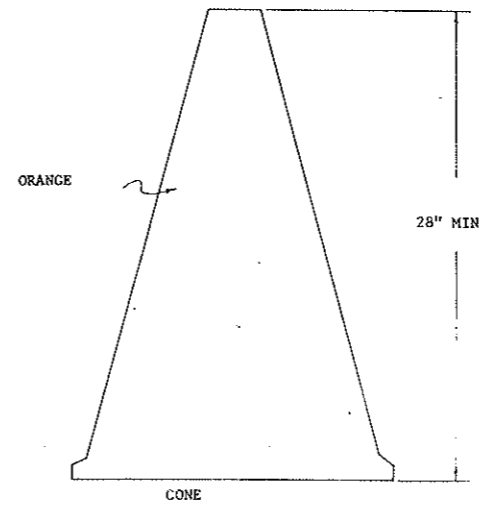
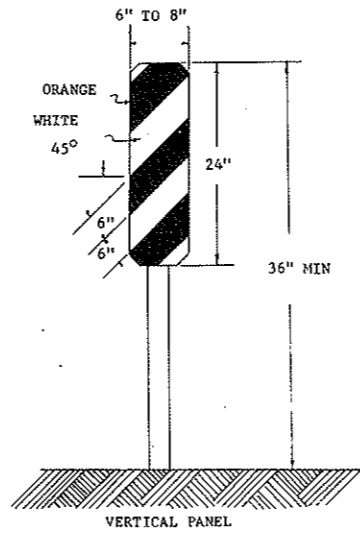
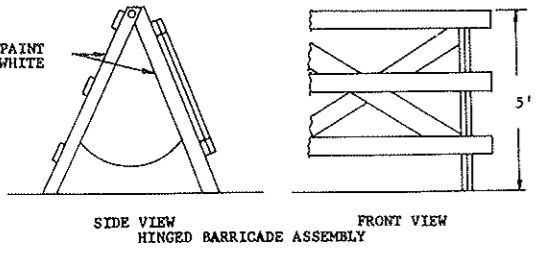
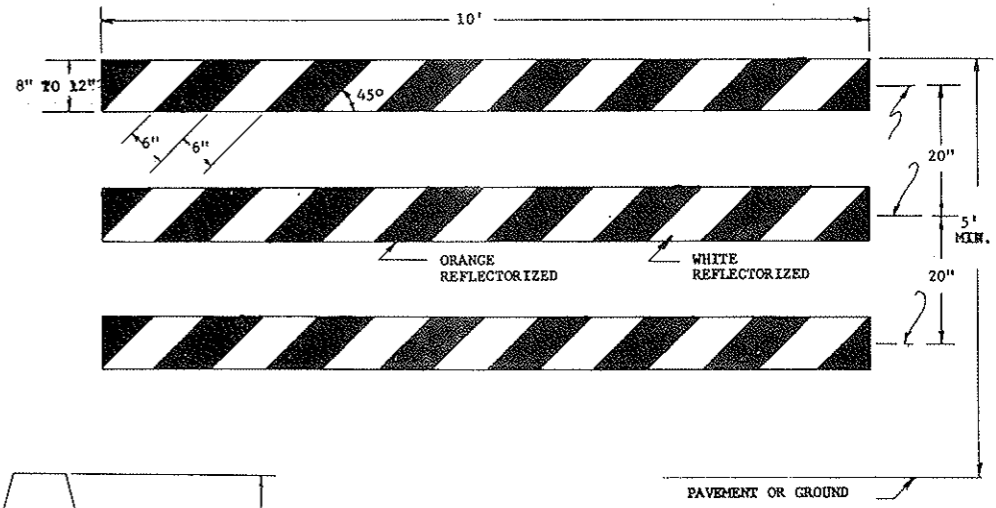


BREAKAWAY BARRICADE ASSEMBLY



NOTE:

EACH MOVABLE BARRICADE SHALL BE WEIGHTED DOWN BY A SUFFICIENT NUMBER OF SAND BAGS OR OTHER SUITABLE WEIGHT SO THAT IT WILL NOT BE BLOWN OVER BY THE WIND UNLESS THE MOVABLE SUPPORTING STRUCTURE IS CONSTRUCTED IN SUCH A MANNER THAT THE WIND CANNOT BLOW IT OVER. WEIGHT USED SHALL BE APPROVED BY THE ENGINEER IN THE FIELD. THE STRIPES SHALL SLANT DOWNWARD TOWARD THE SIDE WHICH TRAFFIC IS TO PASS. BARRICADES USED AT THE BEGINNING OF A PROJECT SHALL FACE TRAFFIC ENTERING THAT PROJECT.



2-17-78		NORTH DAKOTA STATE HIGHWAY DEPARTMENT
DATE	REVISIONS	
	CHANGE	Submitted <i>[Signature]</i> Design Engineer
		Recommended Asst. Chief Engineer, Pre- Constr.
		Approved <i>[Signature]</i> Chief Engineer