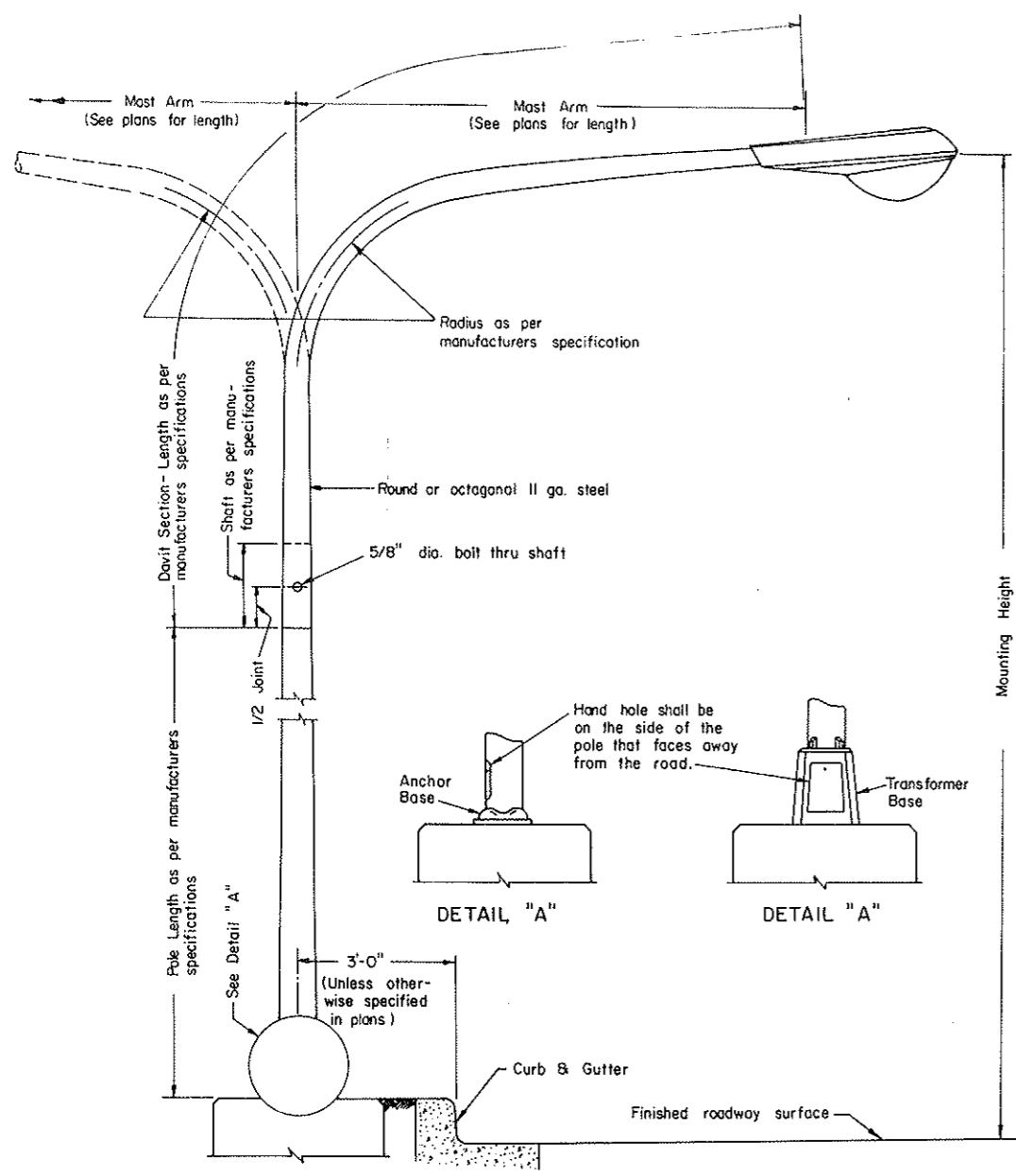
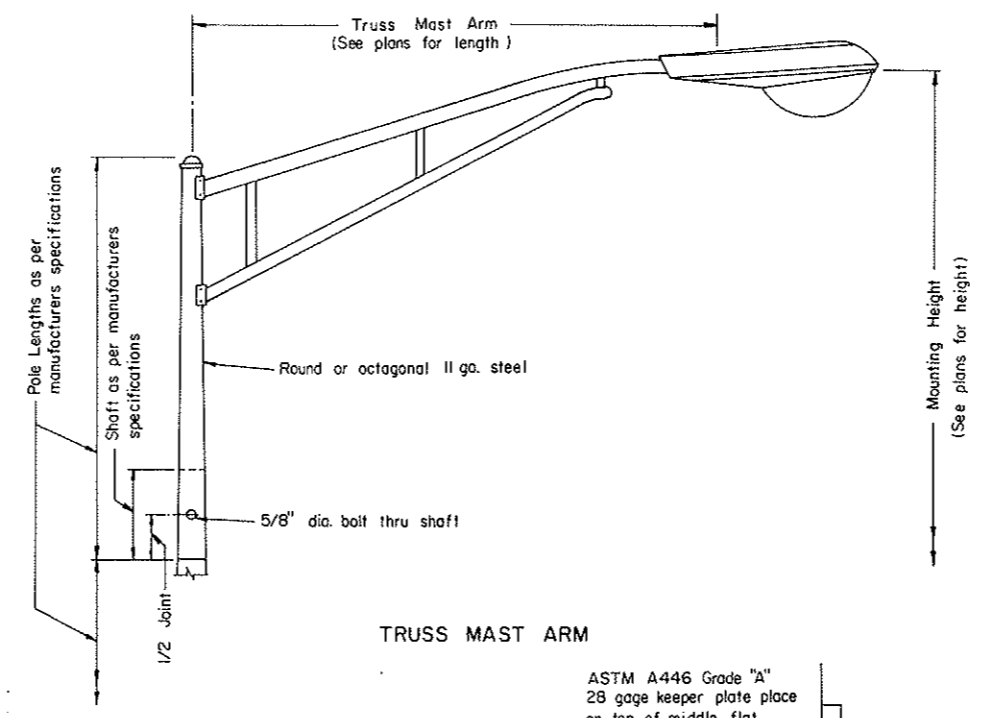


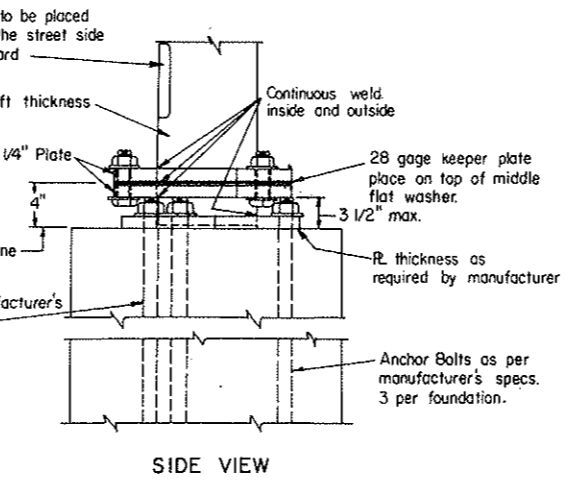
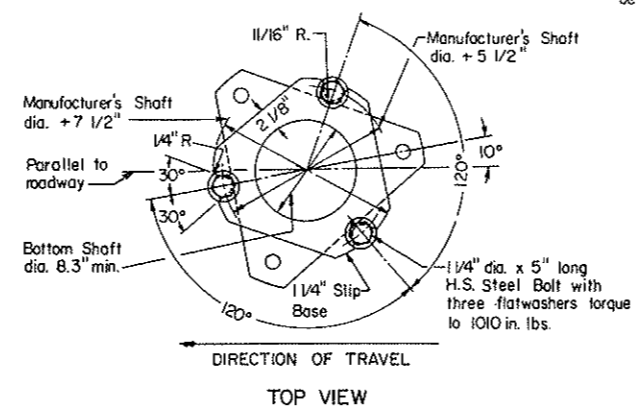
LIGHT STANDARD DETAILS



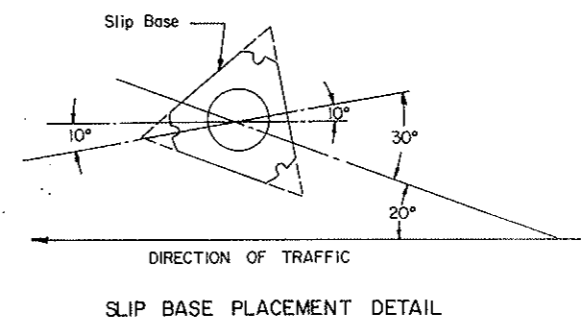
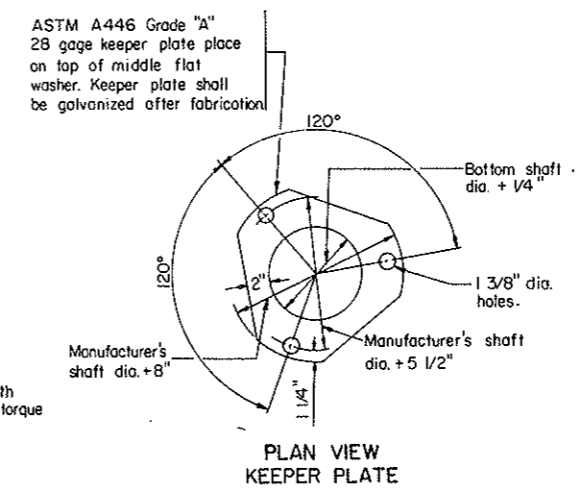
ONE OR TWO PIECE DAVIT POLE



TRUSS MAST ARM



STEEL BASE DETAIL
MULTI-DIRECTIONAL SLIP BASE

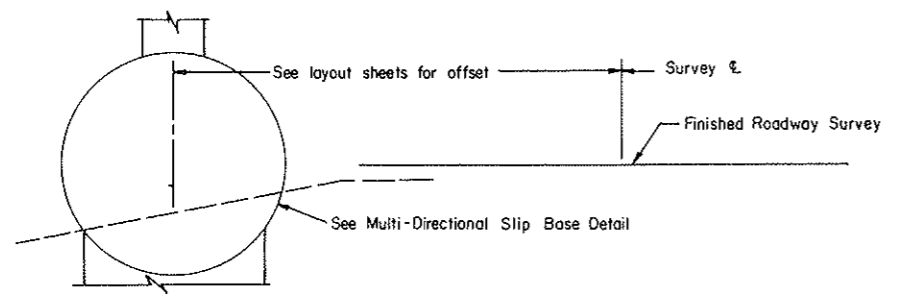


NOTES:

STEEL STANDARD: Marred or scratch areas shall be touched up after erection. See layout sheets for most arm length.

LUMINAIRE: Shall be internal ballast - constant wattage 120 x 240 voltage. See layout sheets for type of luminaire, wattage, I.E.S. distribution, operating type and mounting height.

FUSING: Fusing in base, see special provisions.



JUNE 1, 1977		NORTH DAKOTA STATE HIGHWAY DEPARTMENT
REVISIONS		
DATE	CHANGE	Submitted: <i>Sheldon J. Stoll</i> Design Engineer
9-28-77	Revised slip base	
		Recommended: Asst. Chief Engineer, Pre-Constr.
		Approved: <i>Richard J. ...</i> Chief Engineer