

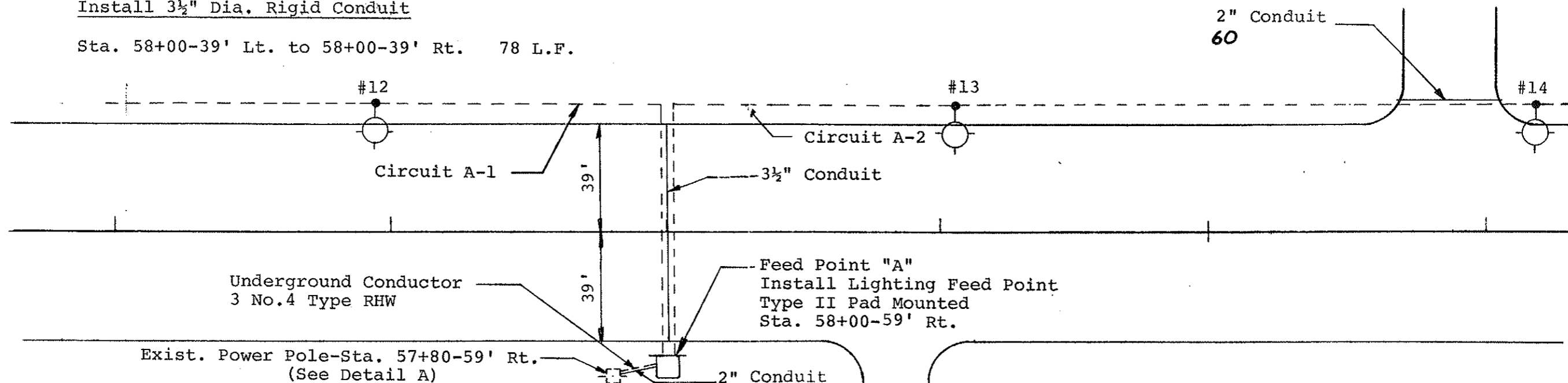
Install 2" Dia. Rigid Conduit

Sta. 60+63-41' Lt. to 61+13-41' Lt. 50 L.F.  
 Sta. 57+80-59' Rt. to 58+00-59' Rt. 39 L.F.\*

\*Includes 20' to be Pole Mounted.

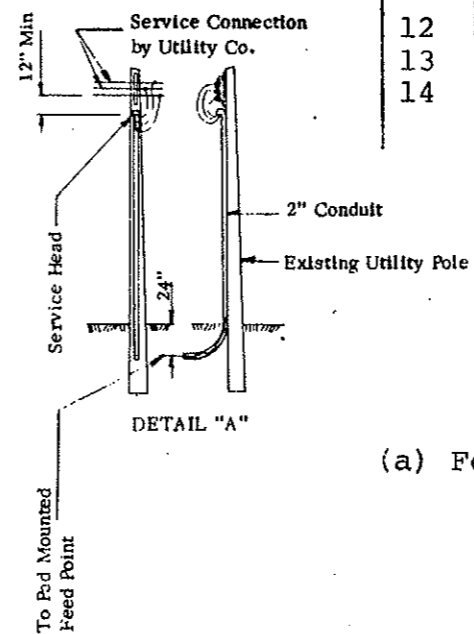
Install 3½" Dia. Rigid Conduit

Sta. 58+00-39' Lt. to 58+00-39' Rt. 78 L.F.



SUMMARY OF QUANTITIES											
	Underground Conductor No. 4 Type RHW	Cable Trench-Type II	Concrete Foundations- Highway Lighting	2" Dia. Rigid Conduit	Multiple Underground Conductor 3 No. 4, 1 No. 6, Style USE	Light Std., 6' M.A., 40' Mtg. Height-Breakaway-Festoon	Sodium Vapor Luminaire- 400 Watt	Concrete Foundations Feed Point Pad - Type B	3½" Dia. Rigid Conduit	Feed Point - Type II - Pad Mounted	Multiple Underground Conductor 3 No. 4, 1 No. 6, Style USE (City Funds only) (a)
	LF	LF	Ea.	LF	LF	Ea.	Ea.	Ea.	LF	Ea.	LF
TOTAL	150	501	3	89	576	3	3	1	78	1	192

NO.	STATION	OFFSET	WATTAGE	CIRCUIT	IES TYPE
12	56+94	41' Lt.	400	A-1	M-S-III
13	59+06	41' Lt.	400	A-2	M-S-III
14	61+18	41' Lt.	400	A-2	M-S-III



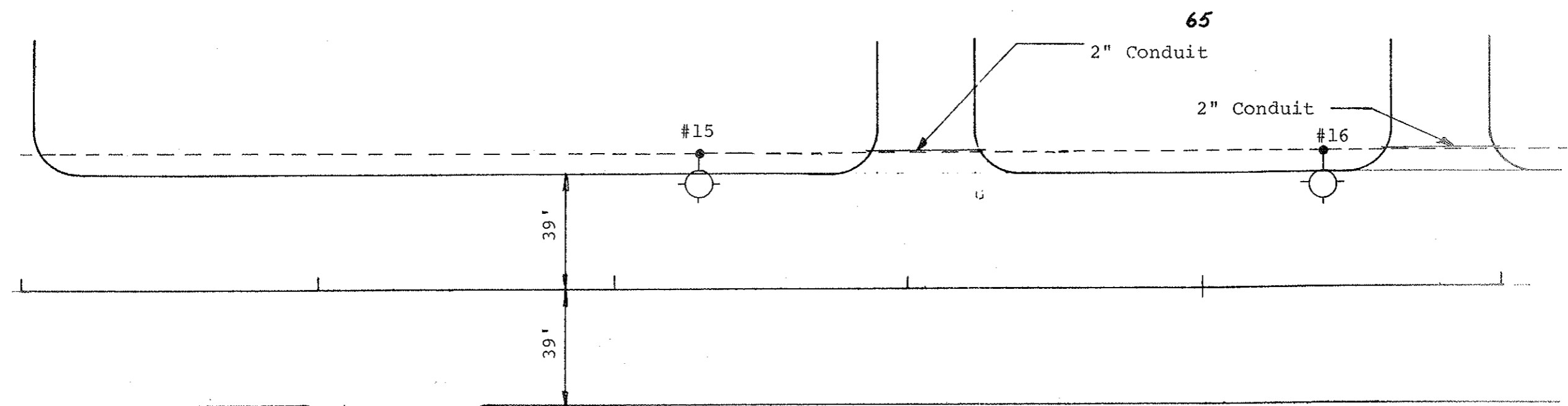
(a) Festoon Circuit

LIGHTING SYSTEM  
 The Mandan Strip Road  
 Mandan, N.D.

16,263

Install 2" Dia. Rigid Conduit

Sta. 63+81-41' Lt. to 64+31-41' Lt. 50 L.F.  
 Sta. 65+54-41' Lt. to 66+04-41' Lt. 50 L.F.



SUMMARY OF QUANTITIES								
	Cable Trench-Type II		Concrete Foundations-Highway Lighting	2" Dia. Rigid Conduit	Multiple Underground Conductor 3 No. 4, 1 No. 6, Style USE	Multiple Underground Conductor 3 No. 4, 1 No. 6, Style USE (City Funds Only)	Light Std., 6' M.A., 40' Mtg. Height-Breakaway-Festoon	Sodium Vapor Luminaire- 400 Watt
	LF		Ea.	LF	LF	LF	Ea.	Ea.
TOTAL	381		2	100	373	124	2	2

NO.	STATION	OFFSET	WATTAGE	CIRCUIT	IES TYPE
15	63+30	41' Lt.	400	A-2	M-S-III
16	65+42	41' Lt.	400	A-2	M-S-III

\* Festoon Circuit

LIGHTING SYSTEM  
 The Mandan Strip Road  
 Mandan, N.D.