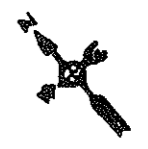
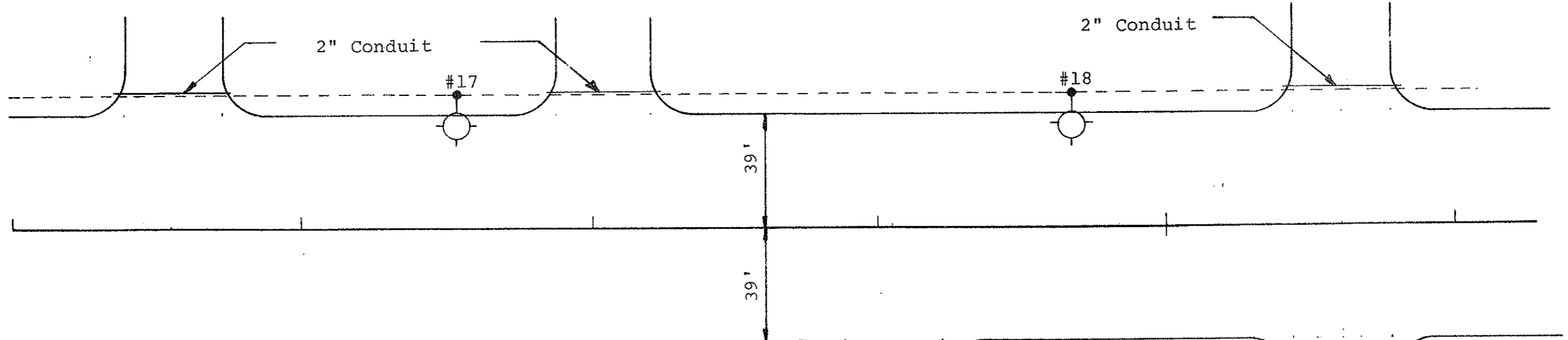


Install 2" Dia. Rigid Conduit

Sta. 66+30-41' Lt. to 66+80-41' Lt. 50 L.F.
 Sta. 67+75-41' Lt. to 68+25-41' Lt. 50 L.F.
 Sta. 70+36-41' Lt. to 70+86-41' Lt. 50 L.F.



70



SUMMARY OF QUANTITIES							
Concrete Foundations-Highway Lighting	2" Dia. Rigid Conduit	Multiple Underground Conductor 3 No. 4, 1 No. 6, Style USE	Cable Trench, Type II	Light Std., 6' M.A., 40' Mtg. Height-Breakaway-Festoon	Sodium Vapor Luminaire-400 Watt	Multiple Underground Conductor 3 No. 4, 1 No. 6, Style USE (City Funds only) *	
Ea.	LF	LF	LF	Ea.	Ea.	LF	
TOTAL	2	150	369	326	2	2	123

NO.	STATION	OFFSET	WATTAGE	CIRCUIT	IES TYPE
17	67+54	41' Lt.	400	A-2	M-S-III
18	69+66	41' Lt.	400	A-2	M-S-III

*Festoon Circuit

LIGHTING SYSTEM
 The Mandan Strip Road
 Mandan, N.D.