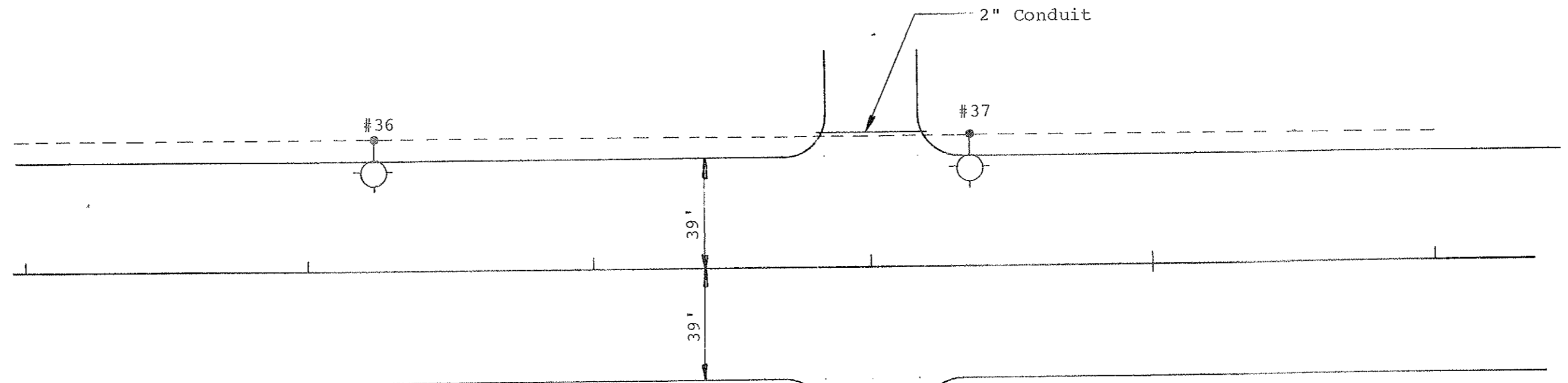


Install 2" Dia. Rigid Conduit

Sta. 108+75-41' Lt. to 109+25-41' Lt. 50 L.F.



110



SUMMARY OF QUANTITIES						
Cable Trench-Type II	Concrete Foundations-Highway Lighting	2" Dia. Rigid Conduit	Multiple Underground Conductor 3 No. 4, 1 No. 6, Style USE	Light Std., 6' M.A., 40' Mtg. Height-Breakaway-Festoon	Sodium Vapor Luminaire-400 Watt	Multiple Underground Conductor 3 No. 4, 1 No. 6 Style USE (City Funds Only) *
LF	Ea.	LF	LF	Ea.	Ea.	LF
TOTAL	446	2	50	384	2	2

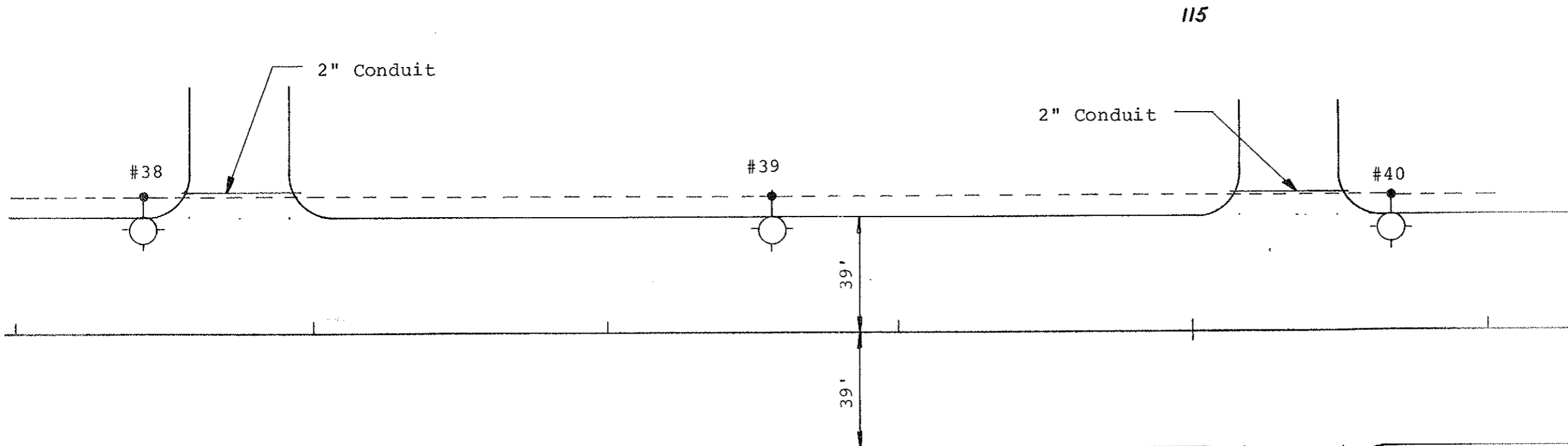
NO.	STATION	OFFSET	WATTAGE	CIRCUIT	IES TYPE
36	107+24	41' Lt.	400	B-2	M-S-III
37	109+36	41' Lt.	400	B-2	M-S-III

* Festoon Circuit

LIGHTING SYSTEM
The Mandan Strip Road
Mandan, N.D.

Install 2" Dia. Rigid Conduit

Sta. 111+50-41' Lt. to 112+00-41' Lt. 50 L.F.
 Sta. 115+08-41' Lt. to 115+58-41' Lt. 50 L.F.



SUMMARY OF QUANTITIES

	Cable Trench-Type II	Concrete Foundations-Highway Lighting	2" Dia. Rigid Conduit	Multiple Underground Conductor 3 No. 4, 1 No. 6, Style USE	Light Std., 6' M.A., 40' Mtg. Height-Breakaway-Festoon	Sodium Vapor Luminaire-400 Watt	Multiple Underground Conductor 3 No. 4, 1 No. 6 Style USE (City Funds Only) *
	LF	Ea.	LF	LF	Ea.	Ea.	LF
TOTAL	394	3	100	388	3	3	130

NO.	STATION	OFFSET	WATTAGE	CIRCUIT	IES TYPE
38	111+44	41' Lt.	400	B-2	M-S-III
39	113+56	41' Lt.	400	B-2	M-S-III
40	115+68	41' Lt.	400	B-2	M-S-III

* Festoon Circuit

LIGHTING SYSTEM
 The Mandan Strip Road
 Mandan, N.D.