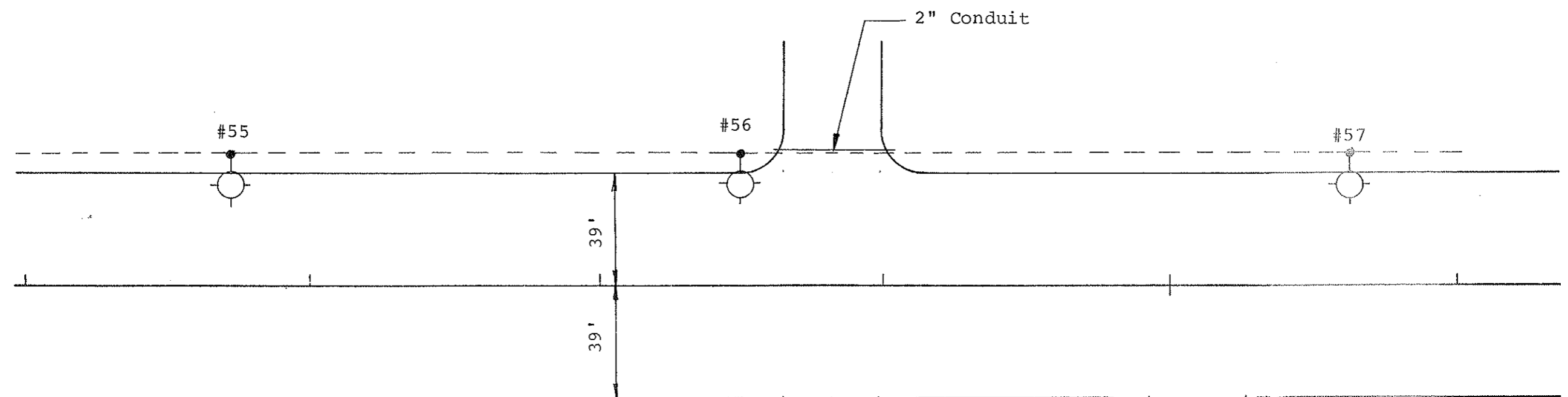


Install 2" Dia. Rigid Conduit

Sta. 148+57-41' Lt. to 149+07-41' Lt. 50 L.F.



150



SUMMARY OF QUANTITIES

	Cable Trench-Type II	Concrete Foundations-Highway Lighting	2" Dia. Rigid Conduit	Multiple Underground Conductor 3 No. 4, 1 No. 6, Style USE	Light Std., 6' M.A., 40' Mtg. Height-Breakaway-Festoon	Sodium Vapor Luminaire- 400 Watt	Multiple Underground Conductor 3 No. 4, 1 No. 6 Style USE (City Funds Only) *
	LF	Ea.	LF	LF	Ea.	Ea.	LF
TOTAL	444	3	50	388	3	3	130

NO.	STATION	OFFSET	WATTAGE	CIRCUIT	IES TYPE
55	146+72	41' Lt.	400	C-2	M-S-III
56	148+50	41' Lt.	400	C-2	M-S-III
57	150+62	41' Lt.	400	C-2	M-S-III

* Festoon Circuit

LIGHTING SYSTEM
The Mandan Strip Road
Mandan, N.D.

SUMMARY OF QUANTITIES

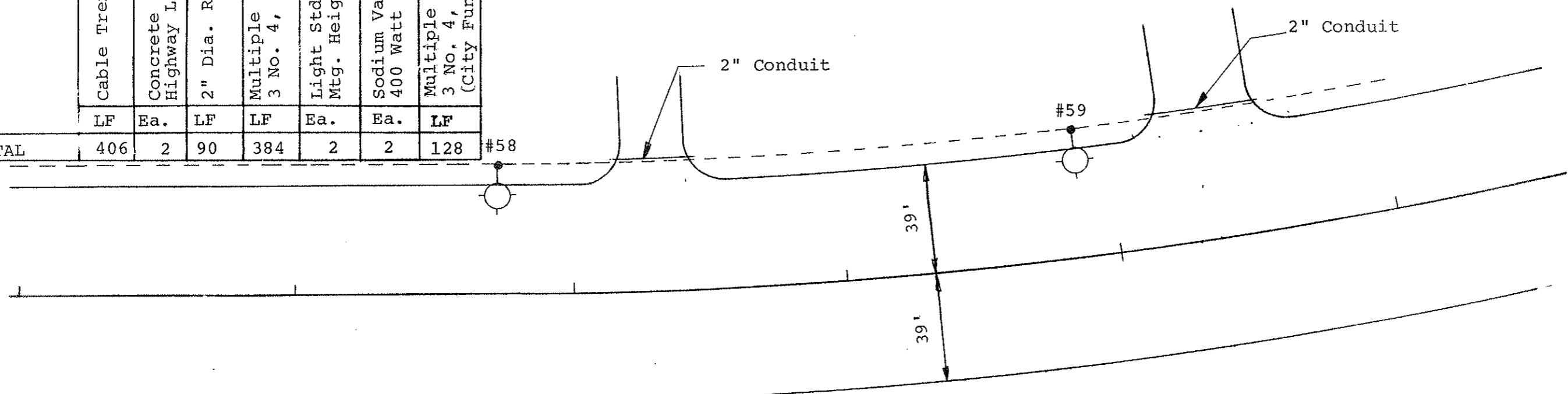
Cable Trench-Type II	Concrete Foundations-Highway Lighting	2" Dia. Rigid Conduit	Multiple Underground Conductor 3 No. 4, 1 No. 6, Style USE	Light Std., 6' M.A., 40' Mtg. Height-Breakaway-Festoon	Sodium Vapor Luminaire-400 Watt	Multiple Underground Conductor 3 No. 4, 1 No. 6 Style USE (City Funds Only) *
LF	Ea.	LF	LF	Ea.	Ea.	LF
406	2	90	384	2	2	128

NO.	STATION	OFFSET	WATTAGE	CIRCUIT	IES TYPE
58	152+74	41' Lt.	400	C-2	M-S-III
59	154+86	41' Lt.	400	C-2	M-S-III

155

* Festoon Circuit

TOTAL	406	2	90	384	2	2	128
-------	-----	---	----	-----	---	---	-----



Install 2" Dia. Rigid Conduit

Sta. 153+11-41' Lt. to 153+51-41' Lt. 40 L.F.
 Sta. 155+12-41' Lt. to 155+62-41' Lt. 50 L.F.

LIGHTING SYSTEM
 The Mandan Strip Road
 Mandan, N.D.