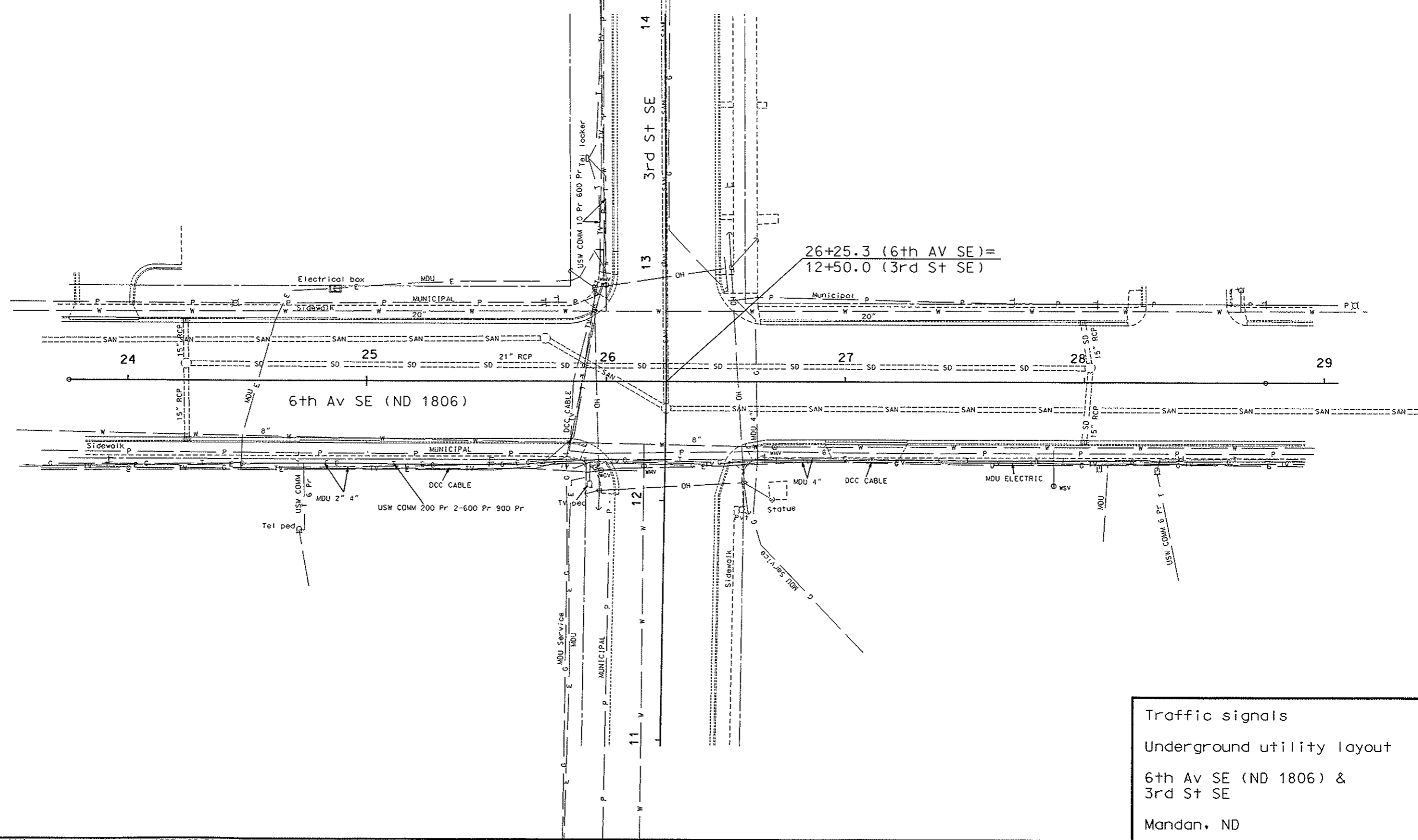
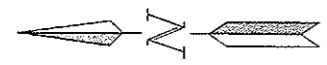
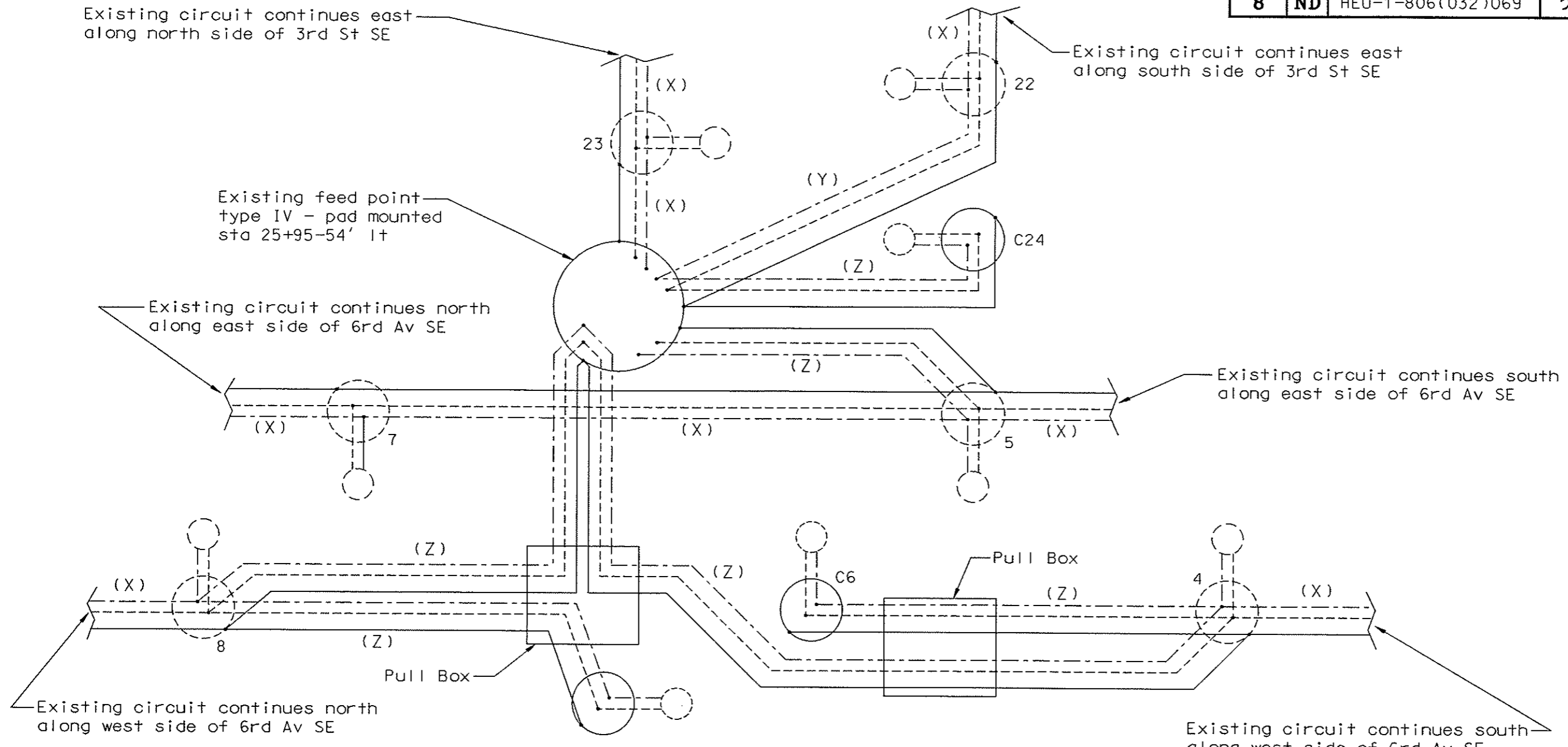


EHW REGION	STATE	PROJECT NO.	SHEET NO.
8	ND	HEU-1-806(032)069	21



Traffic signals  
 Underground utility layout  
 6th Av SE (ND 1806) &  
 3rd St SE  
 Mandan, ND

EHWA REGION	STATE	PROJECT NO.	SHEET NO.
8	ND	HEU-1-806(032)069	22



Legend

- Phase conductor
- Phase conductor
- Ground conductor
- (X) Existing conductors
- (Y) (2) No. 4 RHW, (1) No. 6 THW
- (Z) (2) No. 6 RHW, (1) No. 6 THW
- Existing HP sodium vapor luminaire  
120v x 240v operated on 240v
- Relocated HP sodium vapor luminaire  
120v x 240v operated on 240v
- Combo signal and light standard
- Existing light standard
- 5 Light standard number

Lighting schematic  
 Existing feed point  
 Sta 25+95-54' It  
 Mandan, ND