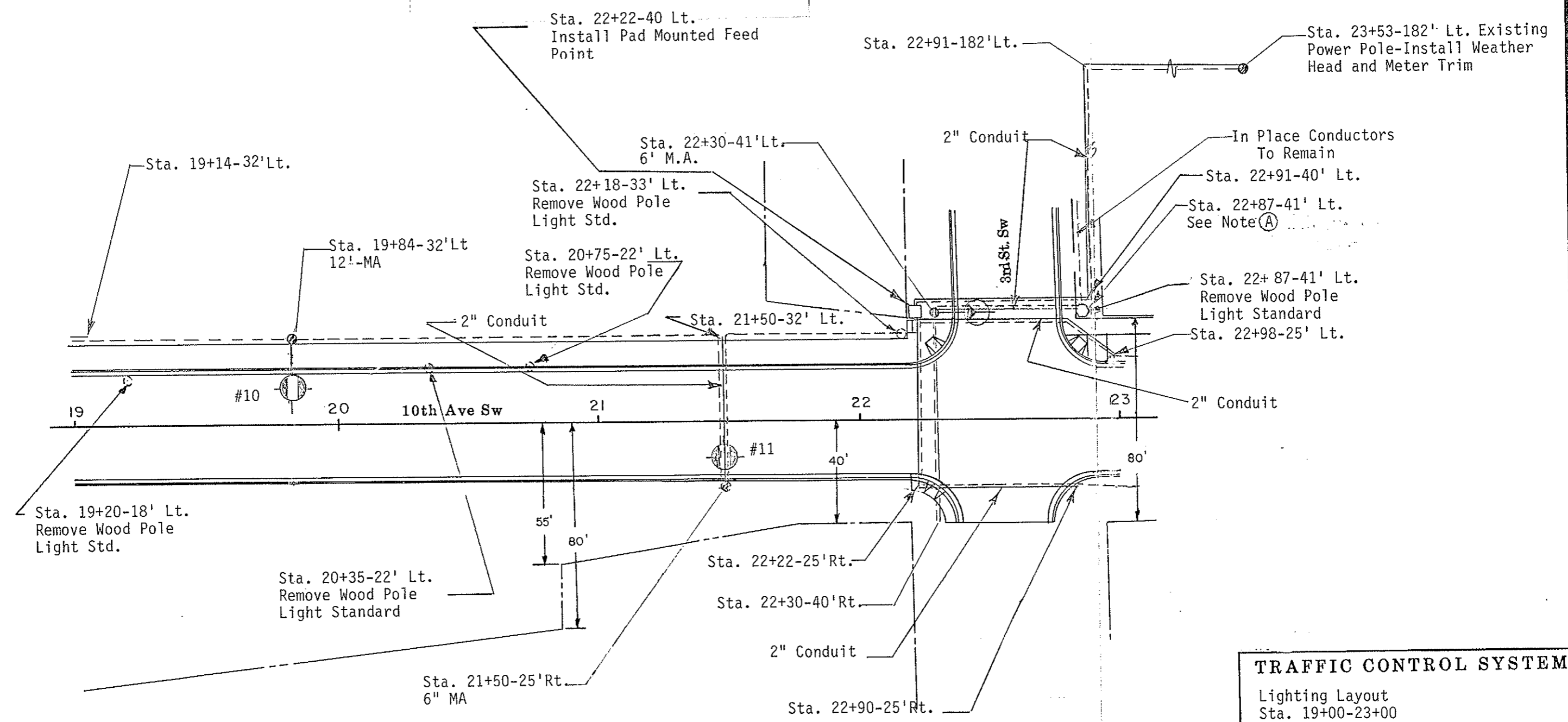


- Remove Wood Pole Light Std.
- Sta. 19+20-18' Lt. 1 EA
  - Sta. 20+35-22' Lt. 1 EA
  - Sta. 20+75-22' Lt. 1 EA
  - Sta. 22+18-33' Lt. 1 EA
  - Sta. 22+87-41' Lt. 1 EA

NOTE (A): The contractor shall locate and splice the in place conductors to provide continuity. The splice shall be waterproof and approved by the Engineer. The contractor shall be responsible for any damage to the existing underground conductor and shall replace any damaged conductor at his own expense.

① Revised 1-18-91



**TRAFFIC CONTROL SYSTEM**  
 Lighting Layout  
 Sta. 19+00-23+00  
  
 10th Ave sw ( ND Hwy 6 )  
 Mandan N.D.