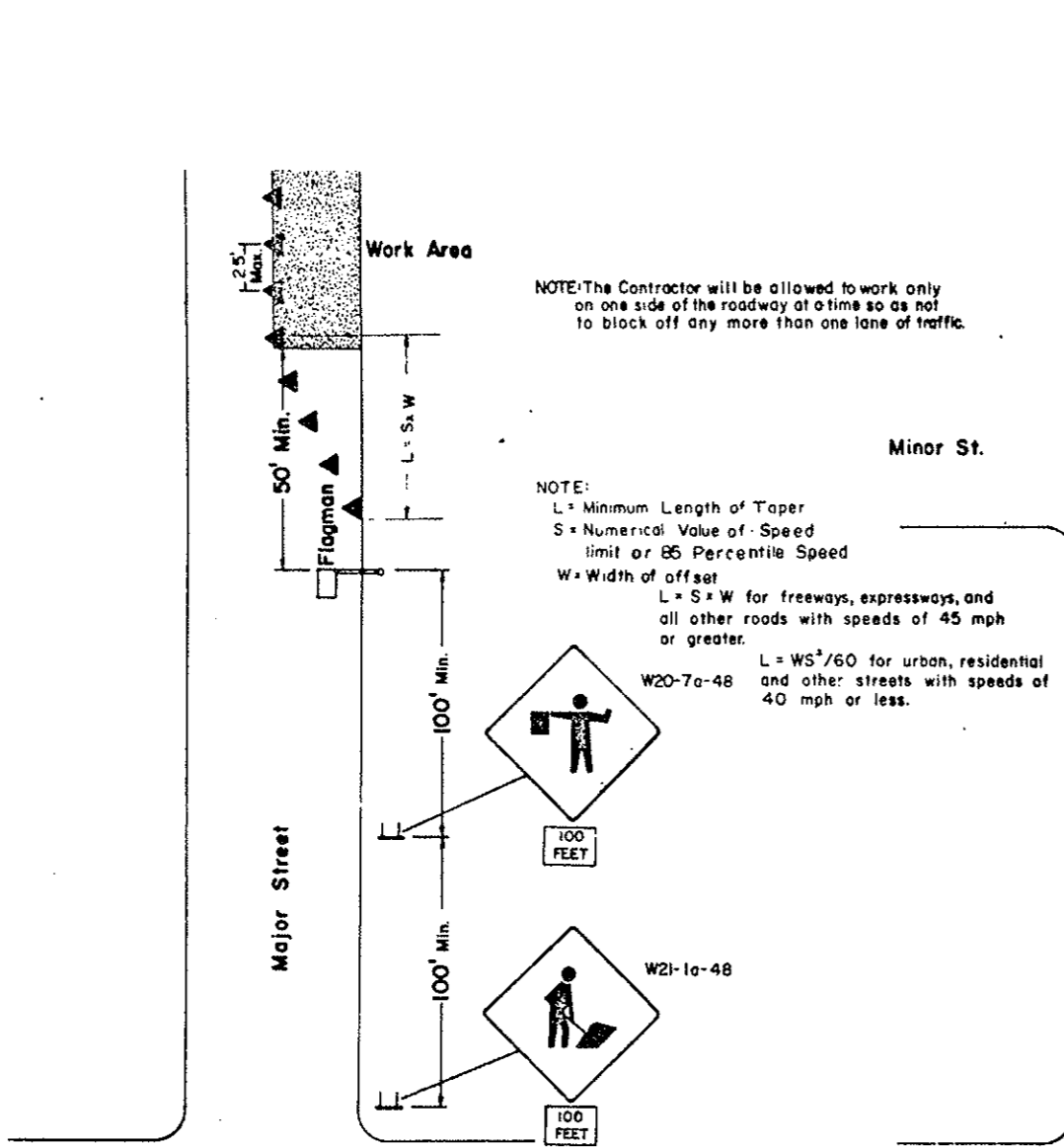


CONSTRUCTION SIGN AND BARRICADE LOCATION DETAILS

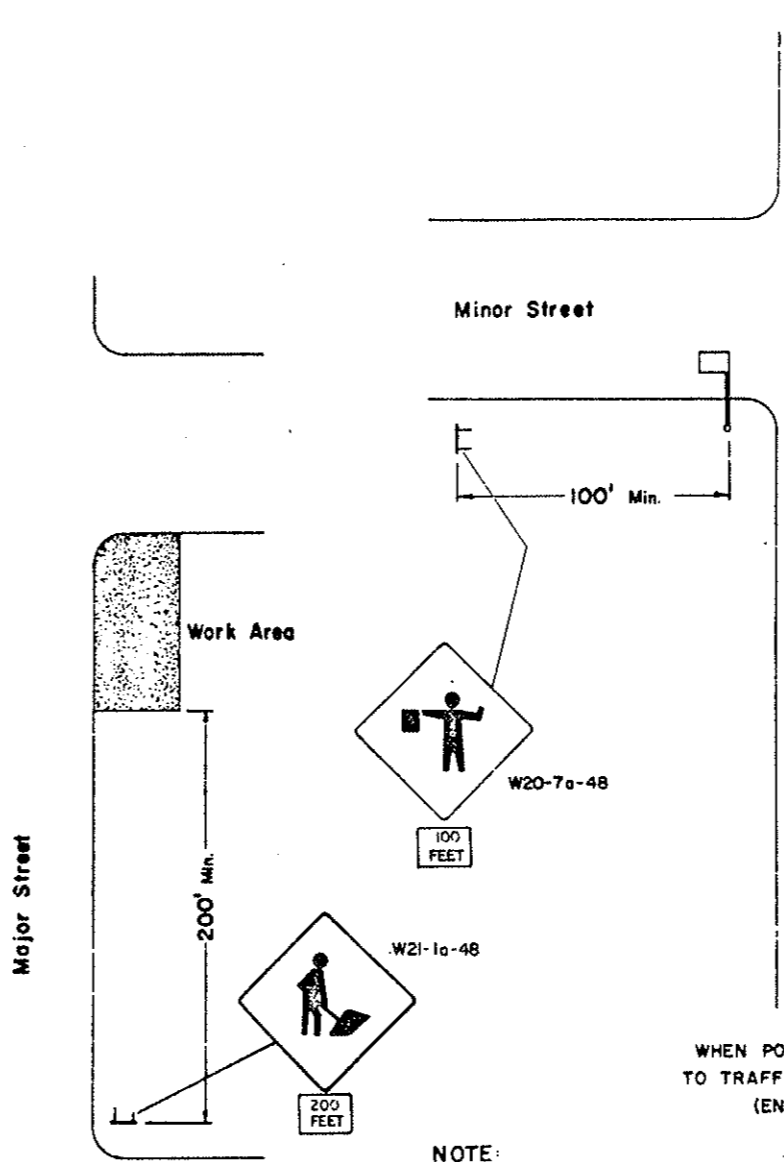
AREA	STATE	FED. AID PROJ. NO.	F-74
8	N.D.	M-1-988(02)000	59
			D-754-13



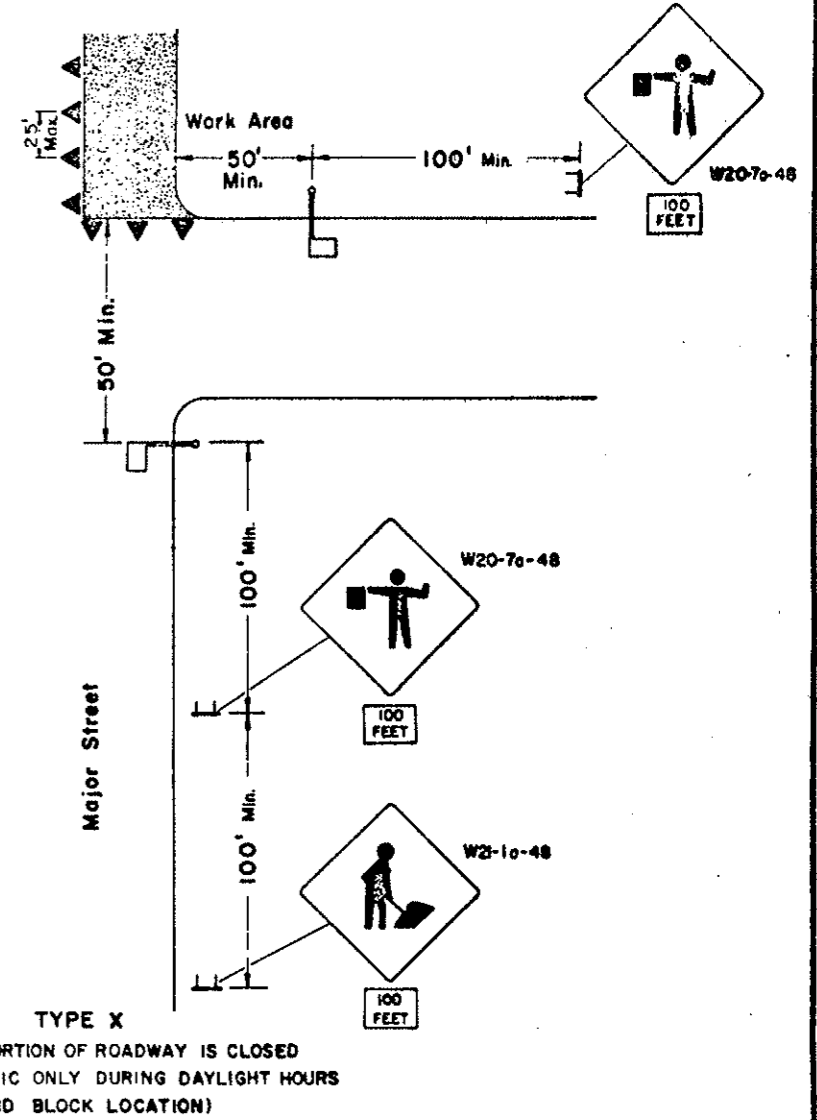
TYPE V
WHEN PORTION OF ROADWAY IS CLOSED TO TRAFFIC ONLY DURING DAYLIGHT HOURS (MID BLOCK LOCATION)

NOTE: The Contractor will be allowed to work only on one side of the roadway at a time so as not to block off any more than one lane of traffic.

NOTE:
L = Minimum Length of Taper
S = Numerical Value of Speed limit or 85 Percentile Speed
W = Width of offset
L = S x W for freeways, expressways, and all other roads with speeds of 45 mph or greater.
L = WS²/60 for urban, residential and other streets with speeds of 40 mph or less.



TYPE W
WHEN WORK AREA IS OUTSIDE OF DRIVING LANE AND NO CLOSURE IS NECESSARY



NOTE: Where advance warning sign placed as shown interferes with permanent signs, the warning sign location shall be determined by the Engineer for best results. Messages shall be varied as required.

Where parking is present the signs shall be placed so they are entirely visible above the parked vehicles or placed at the edge of the parking area so they are visible to oncoming traffic. The number of locations will determine the number of signs needed and the length of the work area will determine the number of cones. The contractor shall furnish the number of appurtenances needed for each situation. If more than one location is being worked on, the Contractor shall furnish the necessary appurtenances for those additional locations. No additional compensation will be given for additional appurtenances but shall be included in the price bid for maintenance and protection of traffic.

Mounting - Sign shown to be placed on roadway shall be placed on movable assemblies.
(All devices shall be removed when hazard ceases to exist).

KEY
▲ Cones
□ Flagman
■ Signs

7-15-78		NORTH DAKOTA STATE HIGHWAY DEPARTMENT
REVISIONS		
DATE	CHANGE	Submitted: <i>Rothman</i> Design Engineer Recommended: _____ Asst. Chief Engineer, Pre-Const. Approved: <i>Wendley</i> Chief Engineer
8-21-78	Sign List Change	
1-8-79	General Revisions	
3-8-79	General Revisions	

