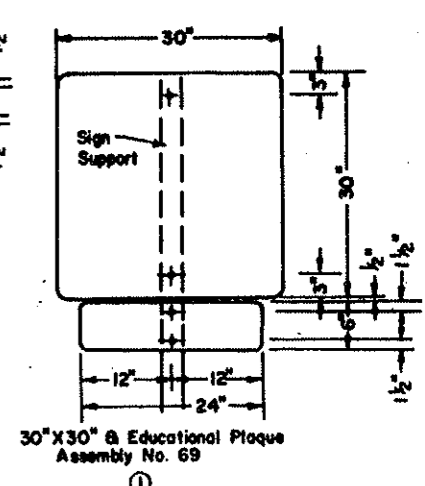
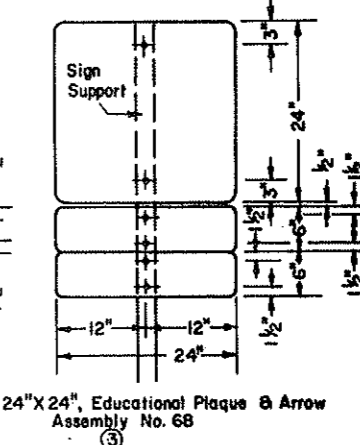
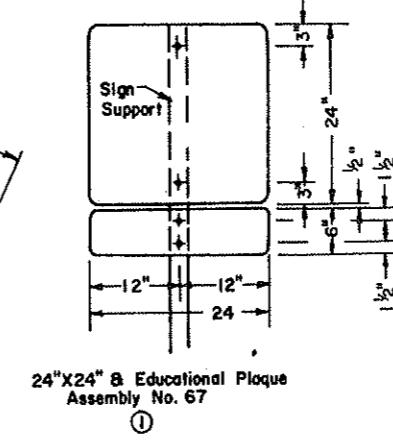
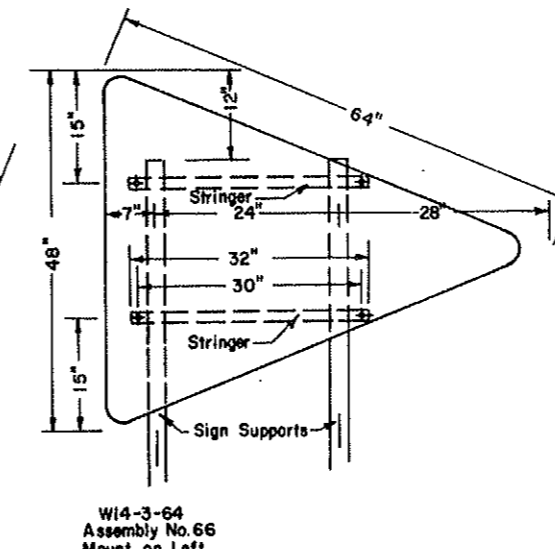
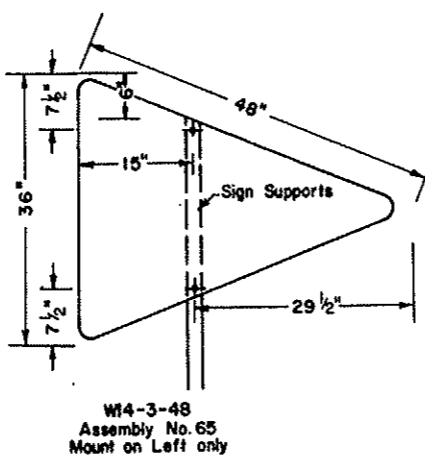
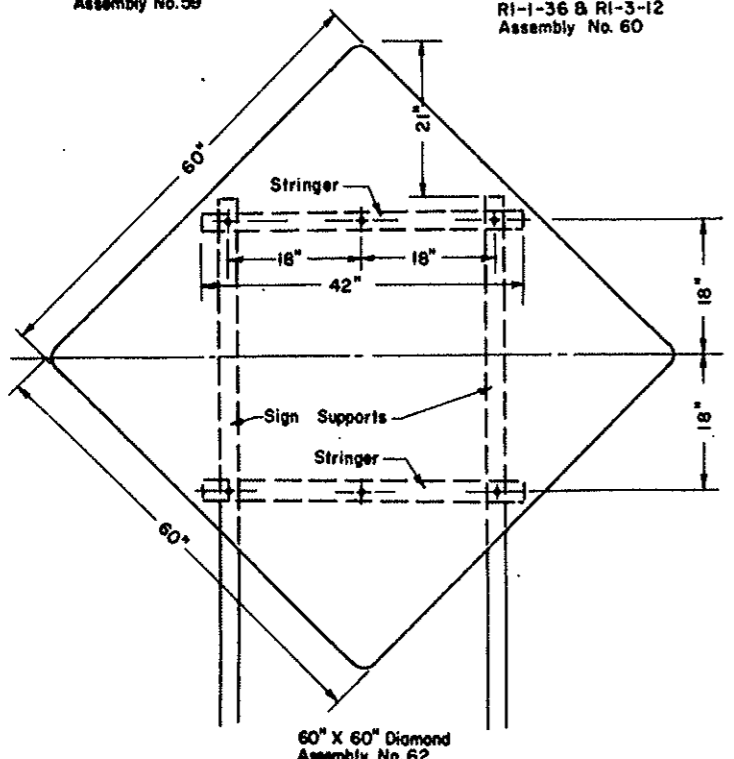
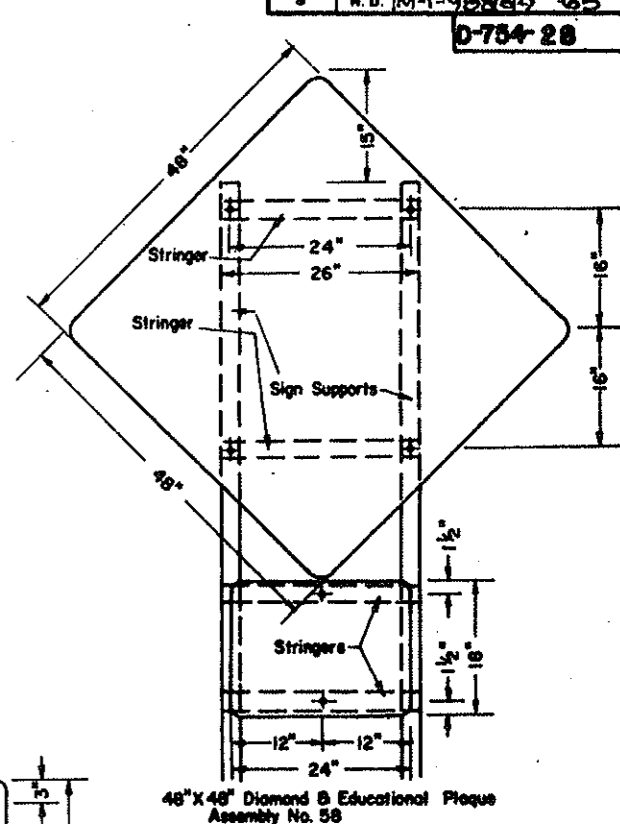
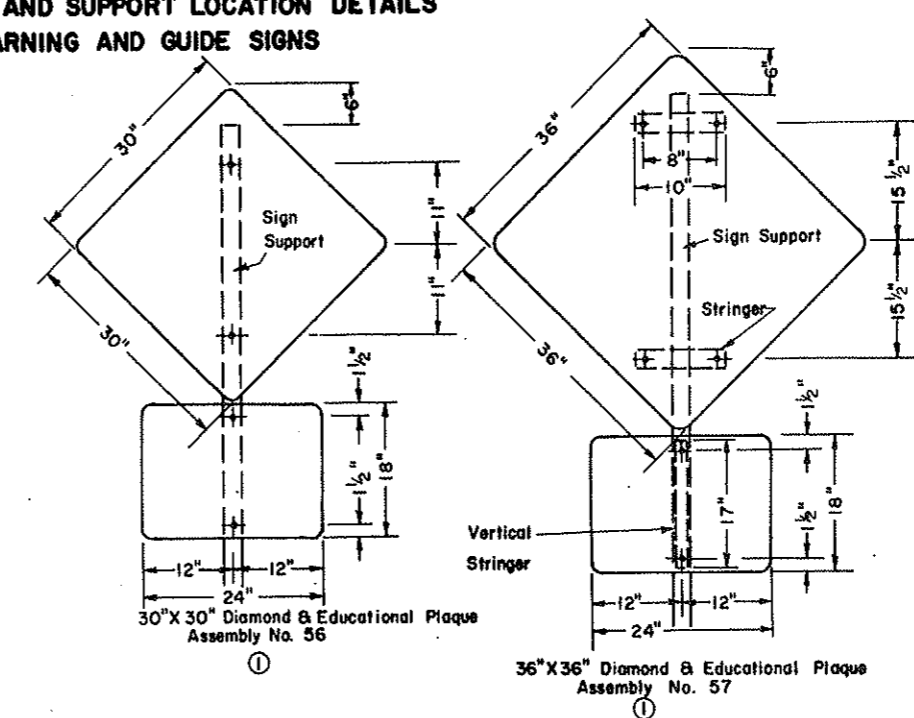
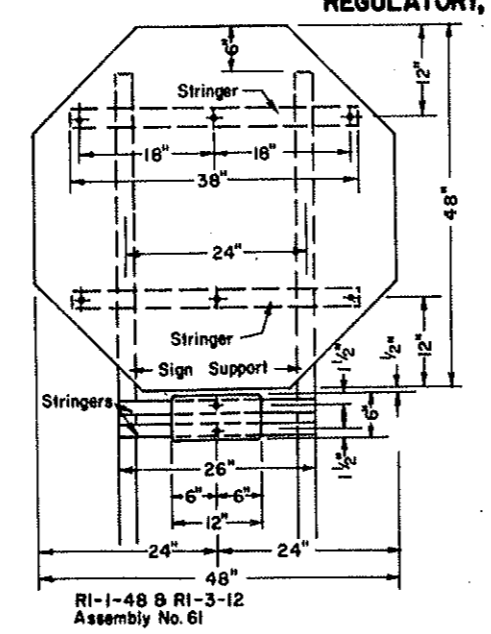
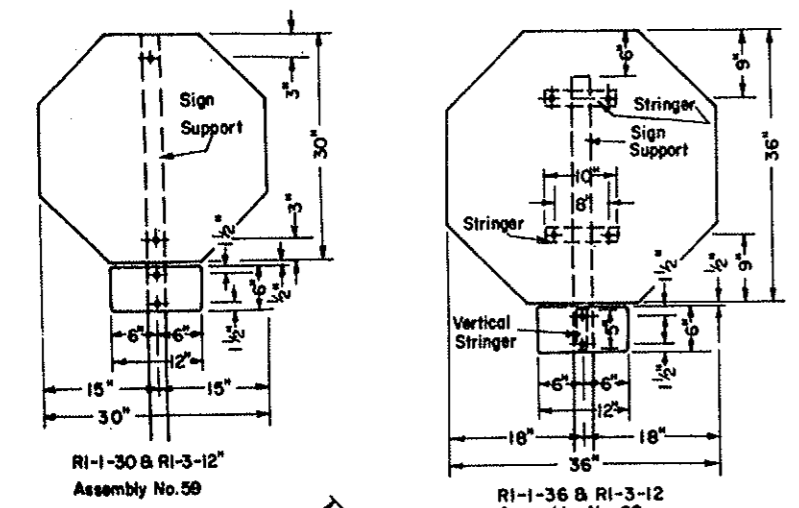


**SIGN PUNCHING, STRINGER AND SUPPORT LOCATION DETAILS
REGULATORY, WARNING AND GUIDE SIGNS**

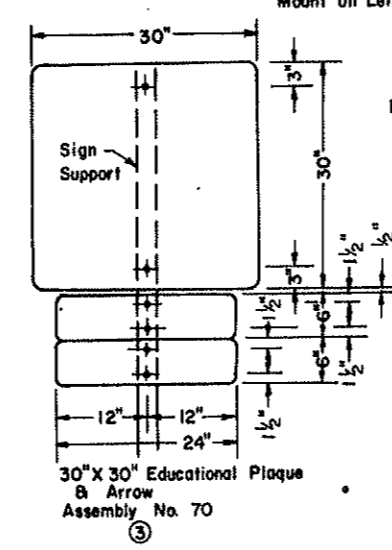
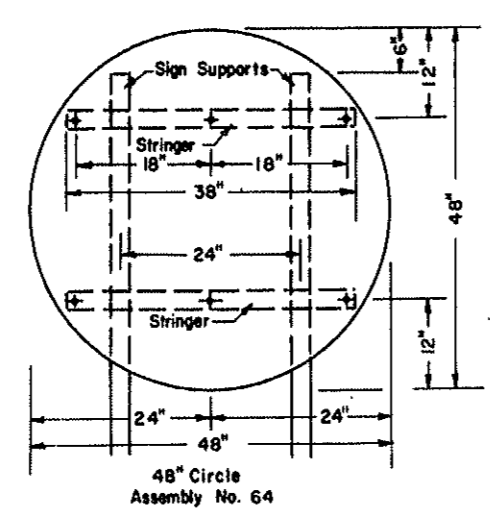
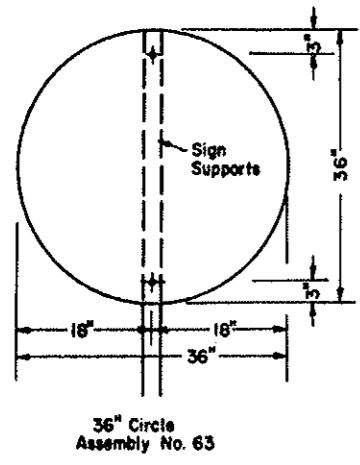


Notes:

① Where Educational Plaque is to be placed below main sign the vertical clearance shall be to the main sign & the support length shall be figured as if no plaque is installed. See support tables for main sign size to determine length and size of supports.

② Where supplemental signs are placed below the main sign the vertical clearance shall be 1 foot less than that specified on support tables standard.

③ Where Educational Plaque is to be placed below main sign and arrow below it the vertical clearance shall be to the bottom of the arrow as if the educational plaque were removed and the support length shall be figured as if no plaque is installed. See support tables for size of supports.



NOTE:

Material:
Sign Backing: The sign backing material thickness shall be as follows.
Steel: Signs having a width of less than 30" shall use 14 gauge material. Signs 30" or more shall use 12 gauge material.
ALUMINUM: ALUMINUM ALLOY 6061-T6 AND 5052-H38 SHALL HAVE THE FOLLOWING MINIMUM THICKNESS: SIGNS 24" OR LESS IN WIDTH SHALL BE 0.100 INCH. SIGNS OVER 24" IN WIDTH SHALL BE 0.125 INCH.

Stringers: All stringers shall be square tube, perforated 1/2" x 1/2" and of the length shown.

Holes: All holes shall be punched round for 3/8" diameter bolts.

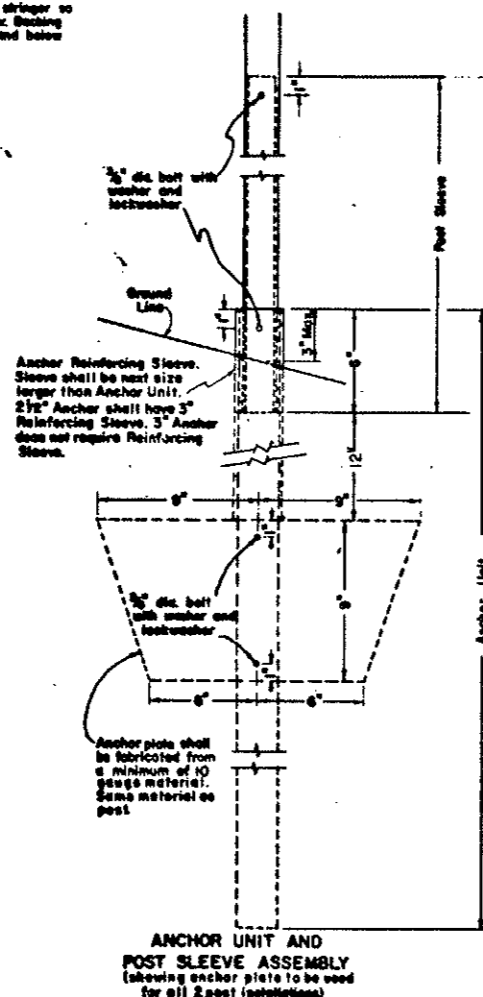
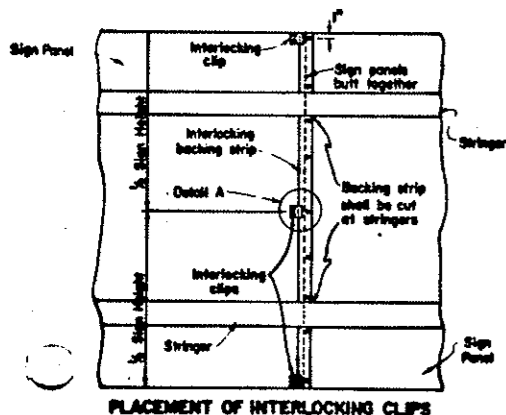
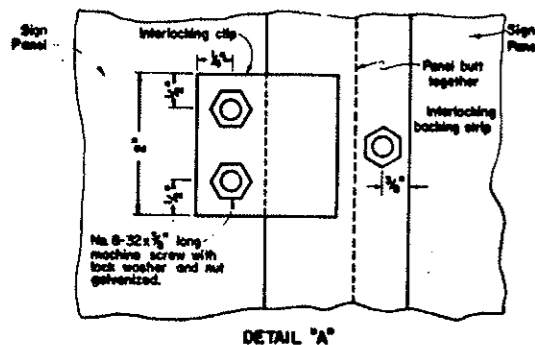
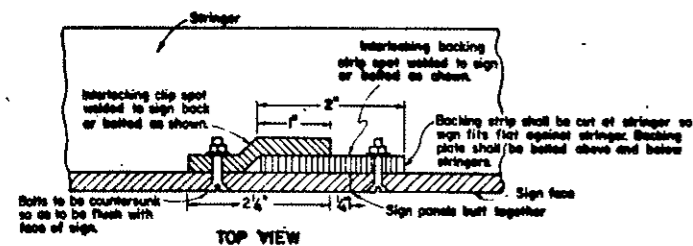
General: See plans for sign numbers to be used at each location.
See Std. D-754-44 for mounting details.
See Std. D-754-23 & 24 for post lengths and sizes.

11-10-75		NORTH DAKOTA STATE HIGHWAY DEPARTMENT
REVISIONS		
DATE	CHANGE	Submitted: <i>Richard J. U.</i> Design Engineer
8-11-78	REVISIONAL WORK	
Recommended:		Asst. Chief Engineer Pre-Construction
Approved:		<i>[Signature]</i> Chief Engineer

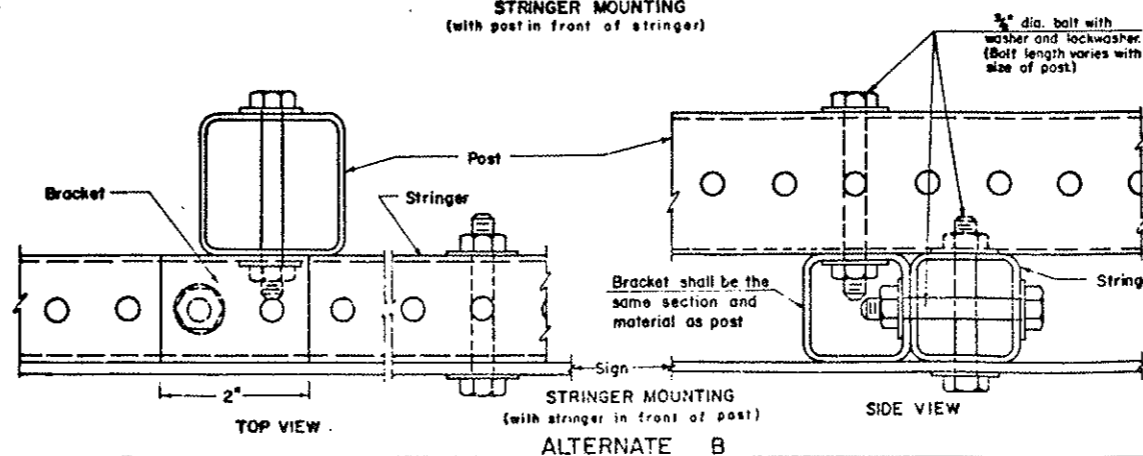
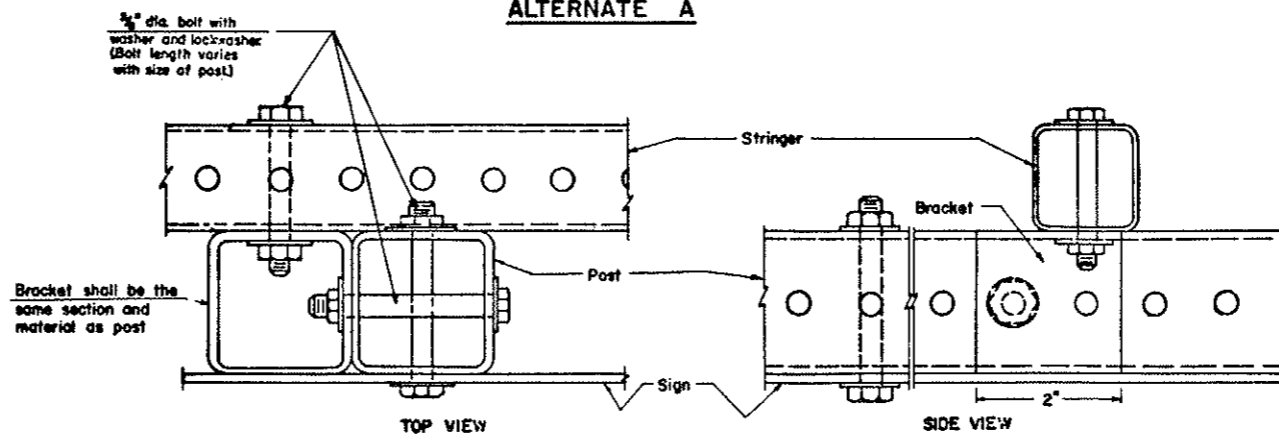
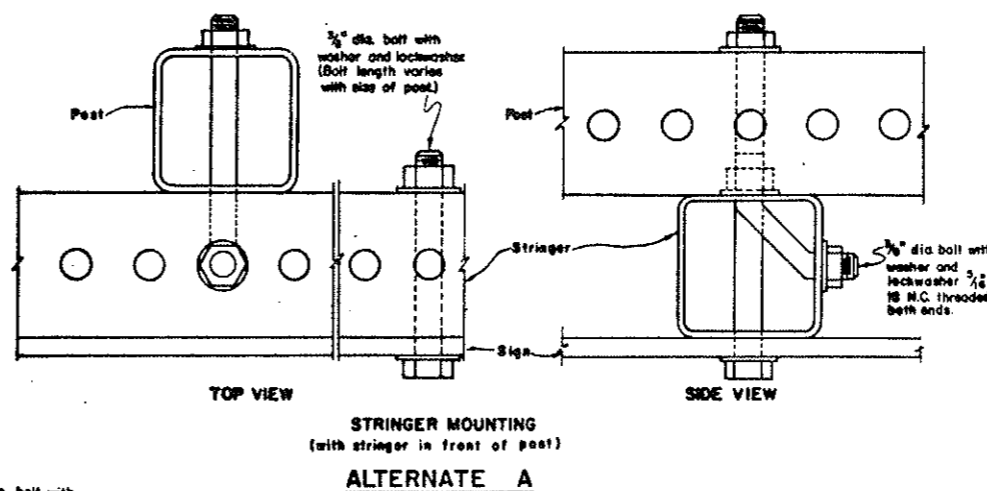
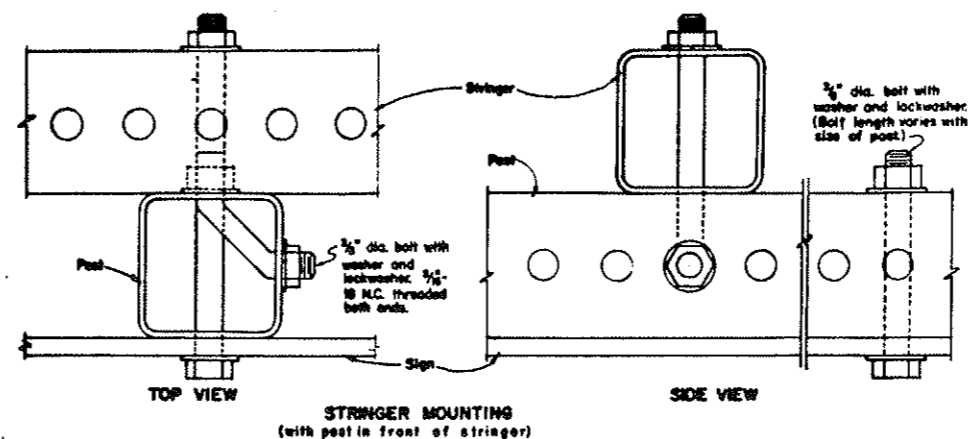
MOUNTING DETAILS

Flat Sheet Signs
Perforated Telescoping Tubes

NO PARKING SIGNS: ALL NO PARKING SIGNS THAT HAVE DIRECTIONAL ARROWS PLACED ON THEIR FACES SHALL BE PLACED AT 30 TO 45 DEGREE ANGLE WITH ONCOMING TRAFFIC.

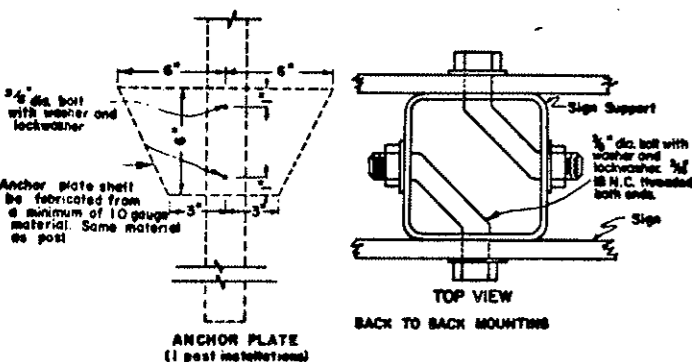


NOTE: Sign may be made in increments or in one complete unit. If made in increments, the interlocking clip shown shall be used. Anchor Unit shall be driven.



TELESCOPING PERFORATED TUBES

TUBE SIZE IN.	WALL THICKNESS IN.	U.S. STANDARD GAUGE	WEIGHT PER FOOT LBS.	MOMENT OF INERTIA IN ⁴	CROSS SECT. AREA IN ²	SECTION MODULUS IN ³
1 x 1	.105	12	1.070	.026	.210	.062
1 1/4 x 1 1/4	.105	12	1.427	.070	.315	.112
1 1/2 x 1 1/2	.105	12	1.705	.129	.380	.172
1 3/4 x 1 3/4	.105	12	2.060	.231	.485	.264
2 x 2	.105	12	2.416	.372	.590	.372
2 1/4 x 2 1/4	.105	12	2.773	.561	.695	.499
2 1/2 x 2 1/2	.105	12	3.141	.804	.803	.643
3 x 3	.1875		7.178	2.791	2.109	1.861



10-19-72	
REVISIONS	
DATE	CHANGE
3-28-78	Table Added
11-16-78	NOTE ADDED
6-20-79	Post Sleeve Change

NORTH DAKOTA
STATE HIGHWAY DEPARTMENT

Submitted: *Sheldon D. Day*
Design Engineer

Recommended:
Asst. Chief Engineer, Pre-Const.

Approved: *Chas. J. Kelly*
Chief Engineer