

Countryside Mobile Park

FHWA REGION	STATE	FED. AID PROJ. NO.	SHEET NO.
8	N.D.	M-1-988(02)000	27

INSTALL CURB & GUTTER, TYPE 1	LENGTH	AREA
40+00 TO 43+58 LT.	369.4 LF.	
41+79 TO 45+00 LT.	117.4 LF.	
40+00 TO 45+00 RT.	500.0 LF.	

INSTALL 72" VALLEY GUTTER	LENGTH	AREA
41+25 TO 41+14 RT.	49.3 S.F.	

INSTALL REIN. CONC. PIPE SEWER	LENGTH	AREA
40+00 TO 41+75 RT.	24" x 175' R.C.P.S. CI. III	
41+79 TO 45+00 RT.	24" x 321' R.C.P.S. CI. III	
41+77 LT. & RT.	12" x 30.5' R.C.P.S. CI. III	
41+77 RT.	12" x 6.5' R.C.P.S. CI. III	

INSTALL 60" MANHOLE	LENGTH	AREA
41+77 - 12' RT.	1 Ea.	

INSTALL MANHOLE RISER	LENGTH	AREA
41+77 - 12' RT.	60" x 4.31'	

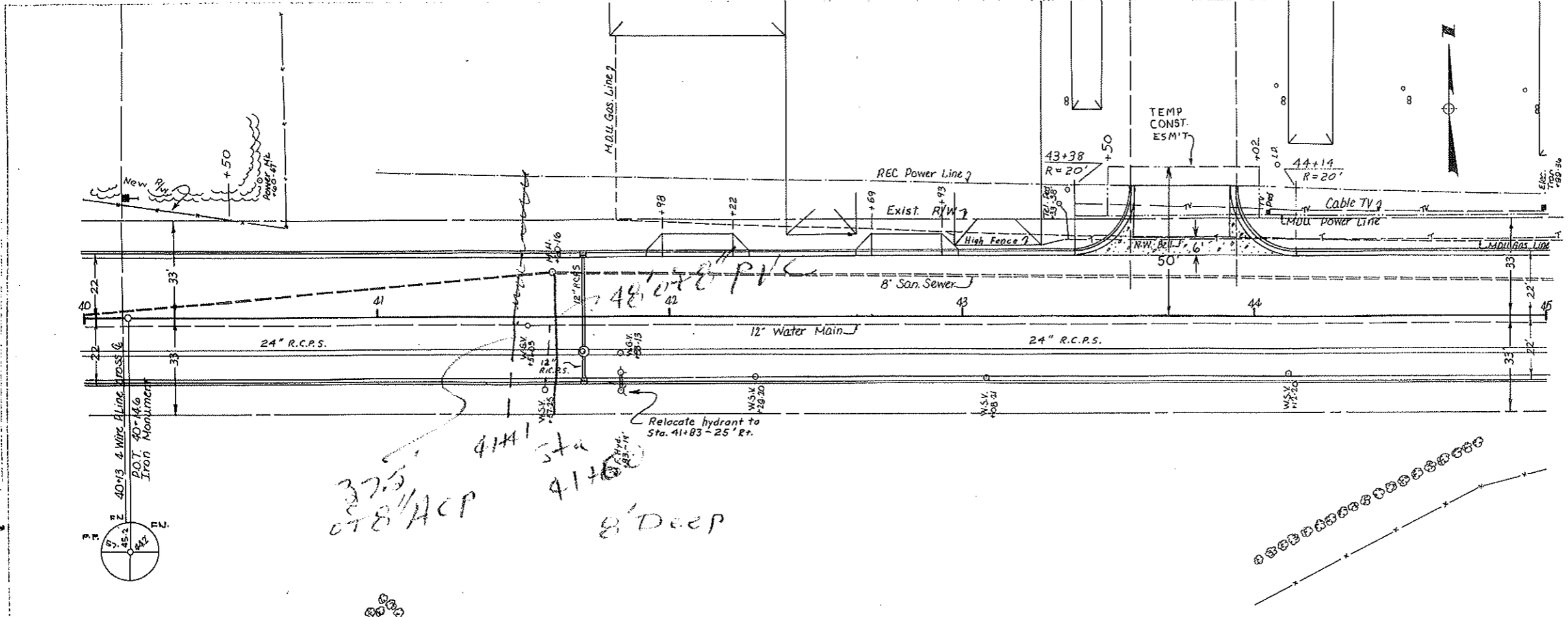
INSTALL INLET	LENGTH	AREA
41+77 - 22' Lt.	1 Ea.	
41+77 - 22' Rt.	1 Ea.	

INSTALL CONC. DRIVEWAY	LENGTH	AREA
42+10 - 22' Lt.	24'	18 S.Y.
42+81 - 22' Lt.	24'	18 S.Y.

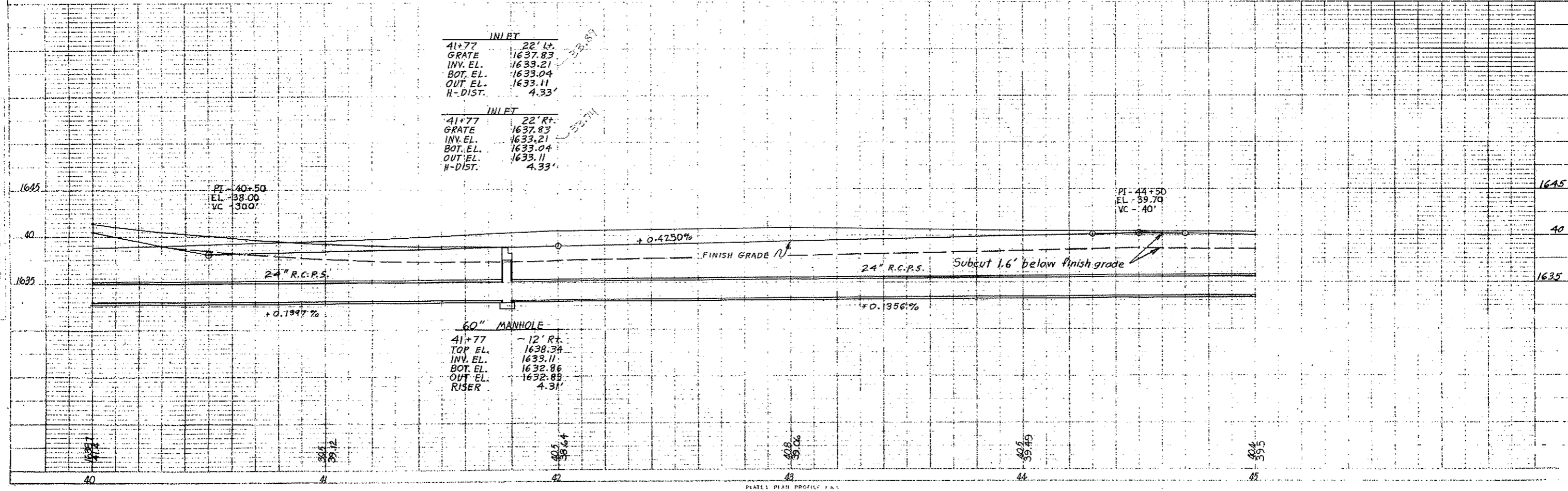
ADJUST UTILITY APPURTENANCE	LENGTH	AREA
41+51 - 3' Rt. (W.G.V.)	1 Ea.	
41+83 - 13' Rt. (W.G.V.)	1 Ea.	
42+28 - 20' Rt. (W.S.V.)	1 Ea.	
43+08 - 21' Rt. (W.S.V.)	1 Ea.	
44+12 - 20' Rt. (W.S.V.)	1 Ea.	

ADJUST MANHOLE	LENGTH	AREA
41+60 - 16' Lt.	1 Ea.	

RELOCATE HYDRANT	LENGTH	AREA
41+83 - 25' Rt.	1 Ea.	



37.5
078" ACP
41+41 Sta
41+60
8' Deep



INLET	
41+77	22' Lt.
GRATE	1637.83
INV. EL.	1633.21
BOT. EL.	1633.04
OUT. EL.	1633.11
H-DIST.	4.33'

INLET	
41+77	22' Rt.
GRATE	1637.83
INV. EL.	1633.21
BOT. EL.	1633.04
OUT. EL.	1633.11
H-DIST.	4.33'

60" MANHOLE	
41+77	- 12' Rt.
TOP EL.	1639.34
INV. EL.	1633.11
BOT. EL.	1632.86
OUT. EL.	1632.85
RISER	4.31'

FHWA REGION	STATE	FED. AID PROJ. NO.	SHEET NO.
8	N.D.	M-1-988(02)000	28

INSTALL CURB & GUTTER, TYPE-I
 45+00 To 50+00 Lt. 500.0 L.F.
 45+00 To 50+00 Rt. 500.0 L.F.

INSTALL REIN. CONC. PIPE SEWER
 45+00 To 45+12.4 Rt. 24"x12.4" R.C.P.S. CI.III
 45+15.6 To 48+48.4 Rt. 24"x32.8" R.C.P.S. CI.III
 48+50 Lt.+Rt. 15"x30.7" R.C.P.S. CI.III
 48+50 Rt. 15"x6.7" R.C.P.S. CI.III

INSTALL 48" MANHOLE
 45+14 - 12' Rt. 1 Ea.
 48+50 - 12' Rt. 1 Ea.

INSTALL MANHOLE RISER
 45+14 - 12' Lt. 48"x4.75'
 48+50 - 12' Rt. 48"x2.95'

INSTALL DOUBLE INLET
 48+50 - 22' Lt. 1 Ea.
 48+50 - 22' Rt. 1 Ea.

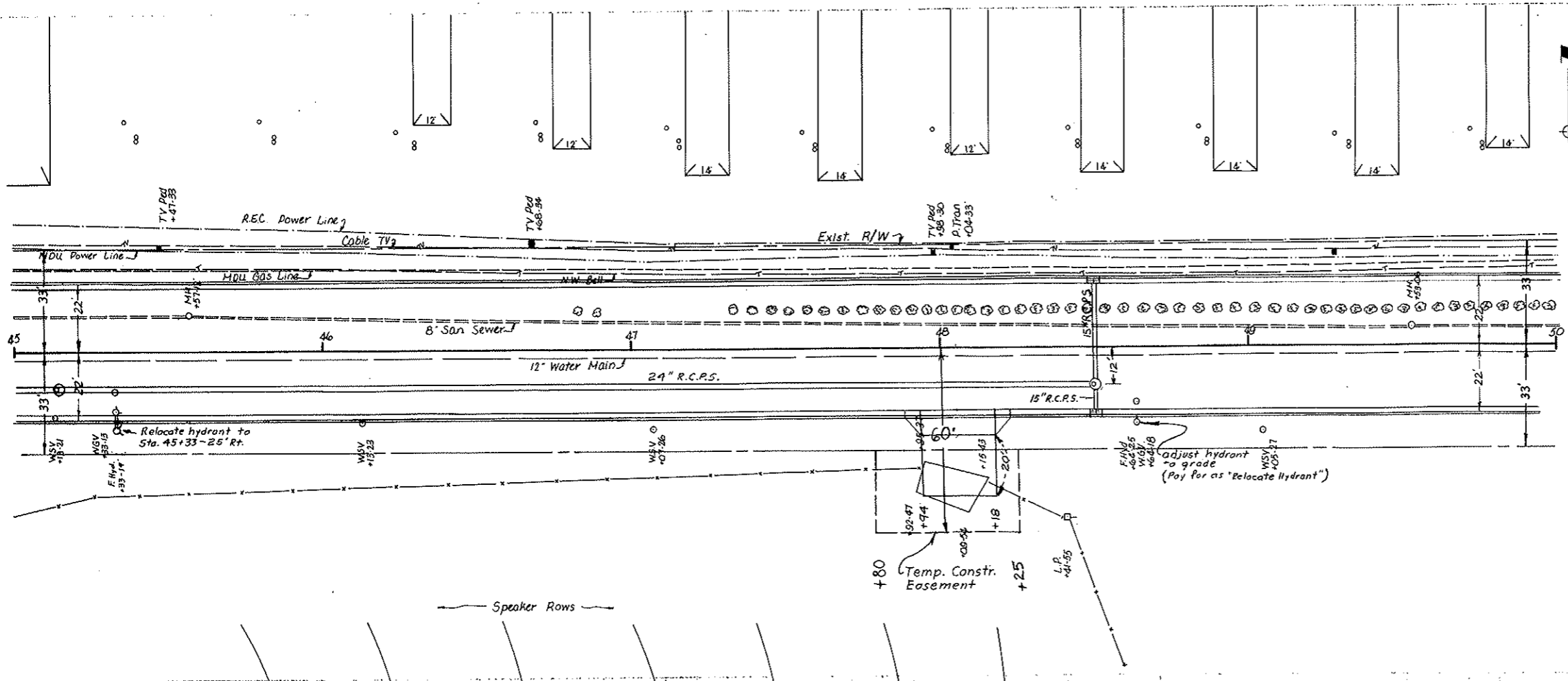
REMOVAL OF CONCRETE
 47+92 To 48+15 Rt. 22 S.Y.

INSTALL CONC. DRIVEWAY
 48+06 Rt. 24' 71.3 S.Y.

ADJUST MANHOLE
 45+57 - 12' Lt. 1 Ea.
 49+53 - 06' Lt. 1 Ea.

ADJUST UTILITY APPURTENANCE
 45+13 - 21' Rt. (W.S.V.) 1 Ea.
 45+33 - 13' Rt. (W.S.V.) 1 Ea.
 46+13 - 23' Rt. (W.S.V.) 1 Ea.
 47+07 - 26' Rt. (W.S.V.) 1 Ea.
 48+64 - 18' Rt. (W.S.V.) 1 Ea.
 49+05 - 27' Rt. (W.S.V.) 1 Ea.

RELOCATE HYDRANT
 45+33 - 25' Rt. 1 Ea.
 48+64 - 25' Rt. 1 Ea.



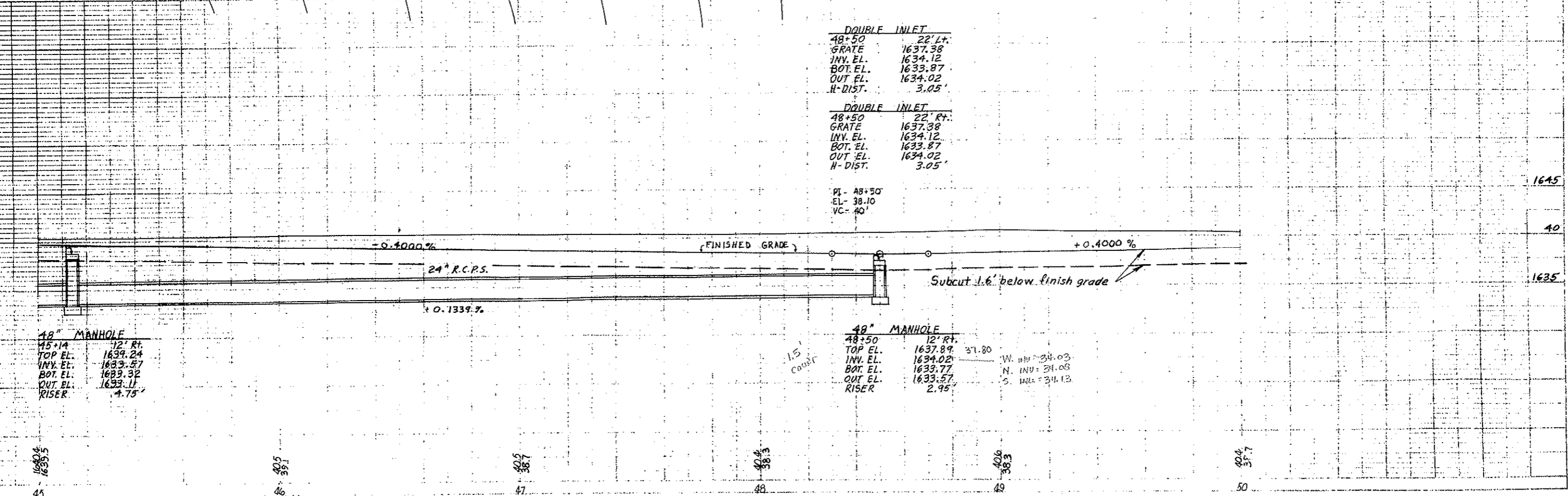
DOUBLE INLET

48+50	22' Lt.
GRATE	1637.38
INV. EL.	1634.12
BOT. EL.	1633.87
OUT EL.	1634.02
H-DIST.	3.05'

DOUBLE INLET

48+50	22' Rt.
GRATE	1637.38
INV. EL.	1634.12
BOT. EL.	1633.87
OUT EL.	1634.02
H-DIST.	3.05'

PI - 48+50
 EL - 38.10
 VC - 40'



48" MANHOLE

45+14	12' Rt.
TOP EL.	1639.24
INV. EL.	1633.57
BOT. EL.	1633.32
OUT EL.	1633.11
RISER	4.75'

48" MANHOLE

48+50	12' Rt.
TOP EL.	1637.89
INV. EL.	1634.02
BOT. EL.	1633.77
OUT EL.	1633.57
RISER	2.95'

W. INV = 34.03
 N. INV = 34.08
 S. INV = 34.13

1645
 40
 1635
 45
 46
 47
 48
 49
 50