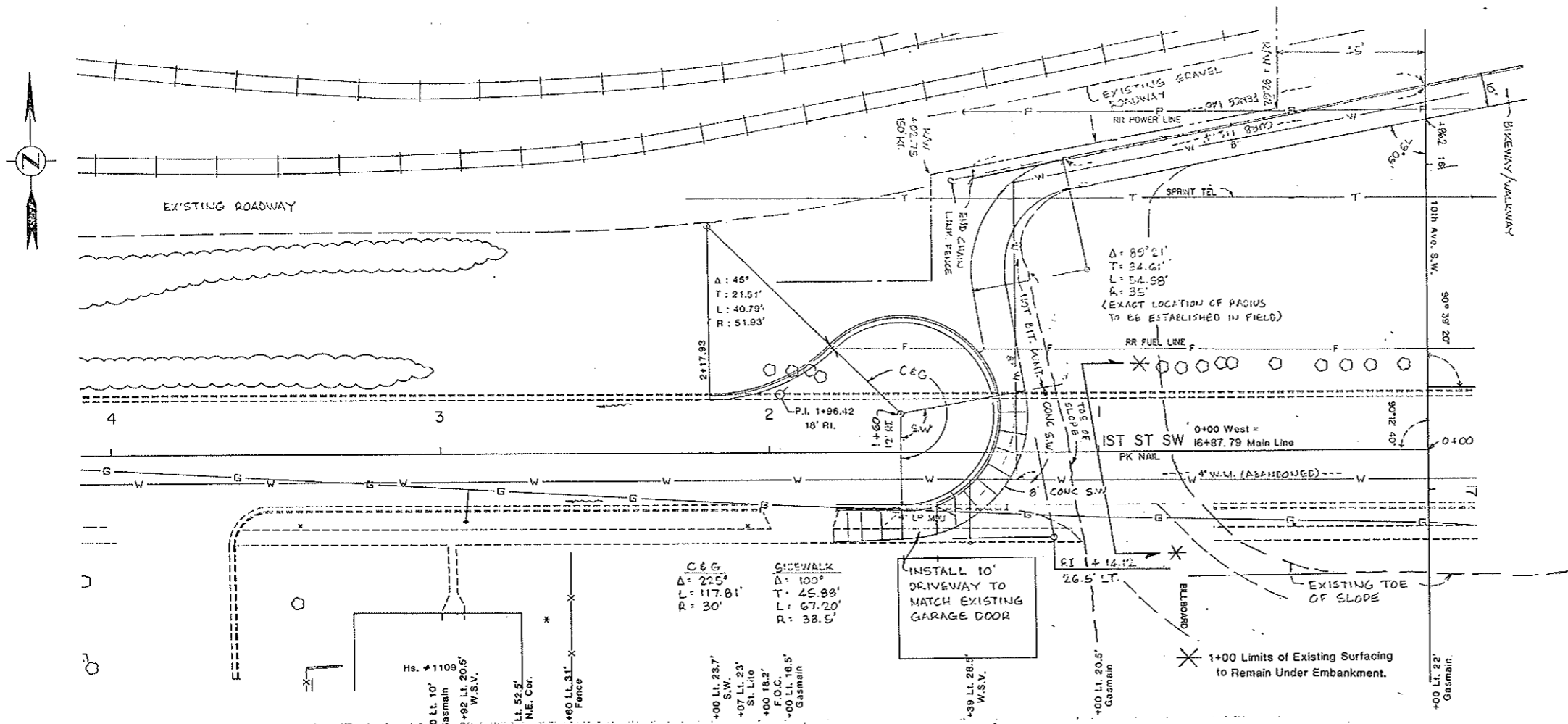


TOWN	STATE	FED. AID PROJ. NO.	SHEET NO.
8	N.D.	R2S-1-006(09S)066	67



REMOVAL OF CURB & GUTTER
 1+03 to 2+17.9 Rt. 115 L.F.
 1+28 to 1+80 Lt. 52 L.F.

REMOVAL OF CONCRETE
 1+06 to 1+80 Lt. 37 S.Y.

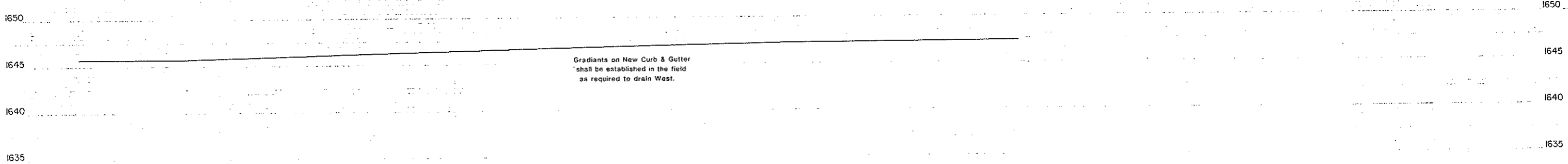
CURB & GUTTER, TYPE-1
 1+30 to 2+17.9 Rt. & Lt. 178.6 L.F.

SIDEWALK, CONCRETE
 1+80 Rt. to 1+25 Lt. 54.7 S.Y.
 (Loc. as Shown)

DRIVEWAY, CONCRETE H.E.S.
 1+ 55± Lt. (10') 18.8 S.Y.

CONSTRUCT CUL-DE-SAC
 EXC. 100 C.Y. (WASTE)

Gradients on New Curb & Gutter
 shall be established in the field
 as required to drain West.



1645.7

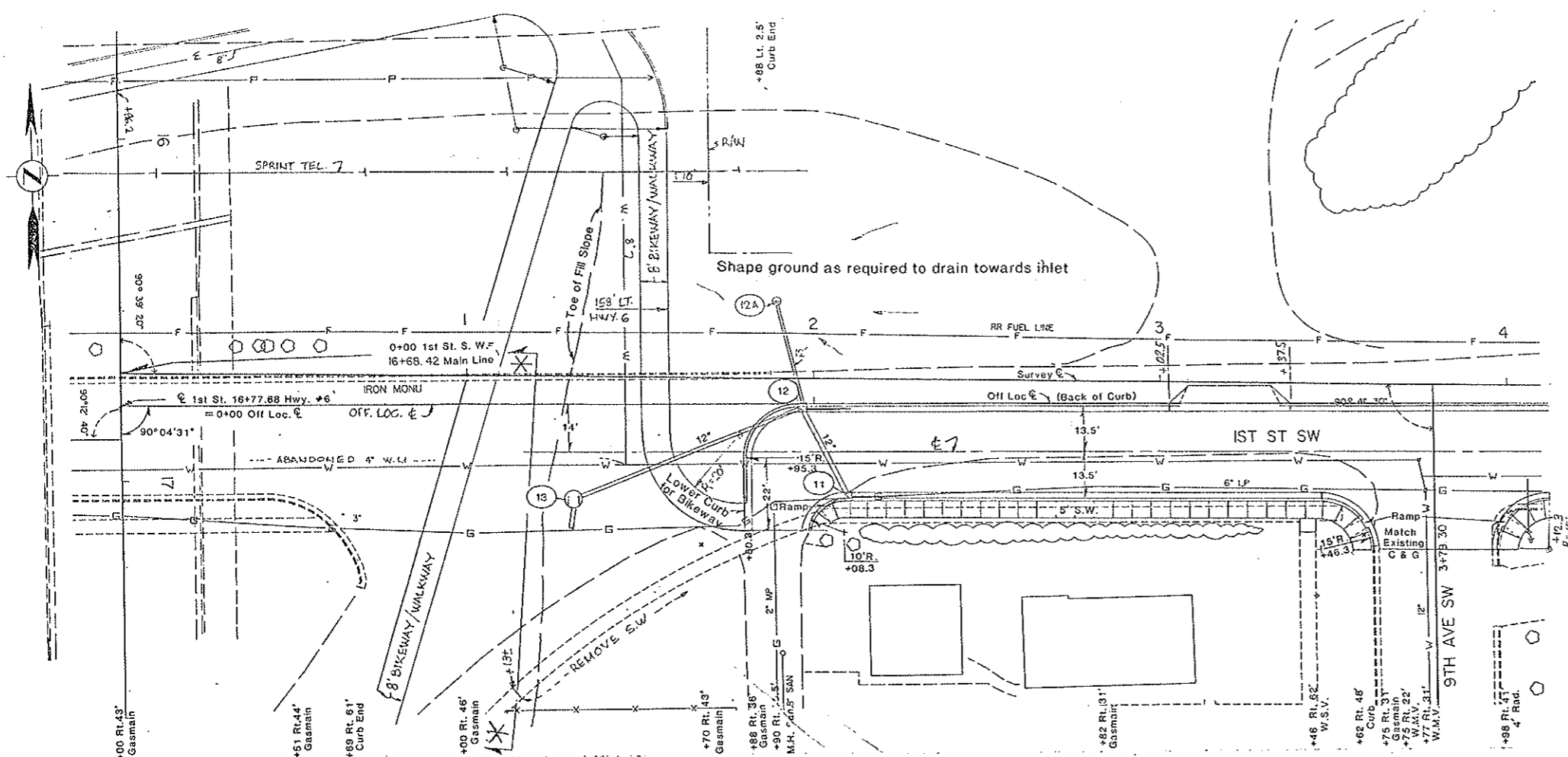
46.1

46.7

47.2

1647.4

FED. AID REGION	STATE	FIC AID PROJ. NO.	SHEET NO.
8	N.D.	2RS-1-006(005)066	68



REMOVAL OF CURB & GUTTER
1+20 to 1+88 Lt. 68 L.F.

REMOVAL OF CONCRETE
1+13 to 3+53 Rt. 129.3 S.Y.

CURB & GUTTER, TYPE-1
1+80.3 to 4+12.3 Lt. 262.6 L.F.
1+98.3 to 4+12.3 Rt. 200.9 L.F.

SIDEWALK, CONCRETE
1+98.8 to 4+12.3 Rt. 105.7 S.Y.

**PIPE, CONC. REINF. 12 IN.
CL-III, STORM DRAIN**

#11 to #12 28 L.F.
#12 to #13 70 L.F.
#12A to #12 30 L.F.

**UNDERDRAIN, PIPE, PVC.
PERFORATED - 4 IN.**

INLET - TYPE 1

#11 1 Ea.
#12 1 Ea.

Inlet # 11 Ahd. - 12.5 L.F.
Inlet # 12 Ahd. - 12.5 L.F.

DRIVEWAY, CONCRETE H.E.S.

3+20 Lt. (24') 18.0 S.Y.

INLET-CATCH BASIN-6" BEEHIVE

#12A - 1 Ea.

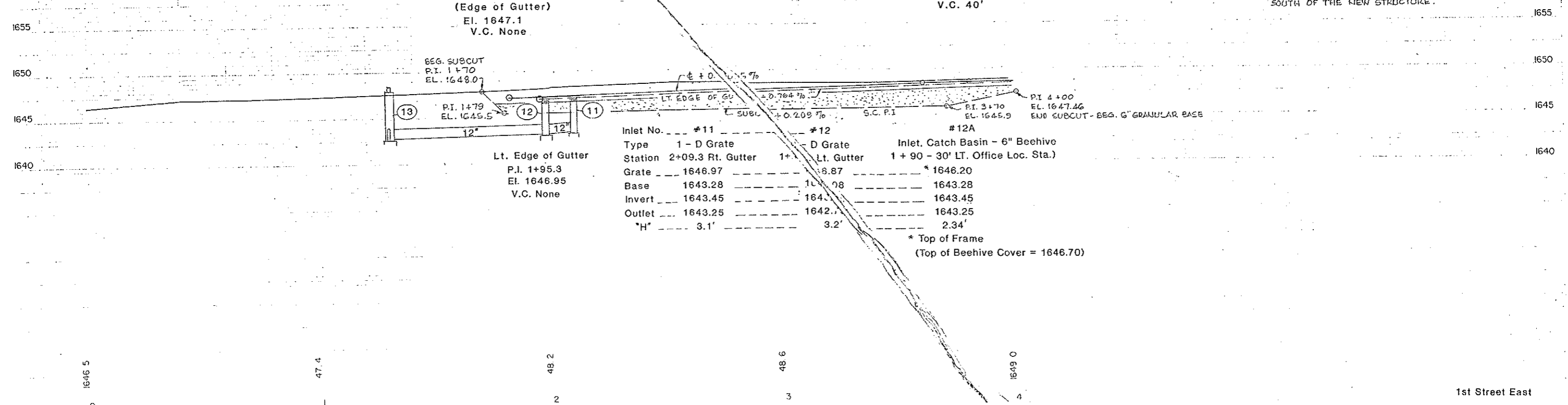
* 1+19 Limits of Existing Surfacing to Remain Under Embankment (SEE NOTE NO. 200-PO1)

P.I. 1+81.8 (Edge of Gutter)
El. 1647.1
V.C. None

P.I. 3+79
El. 1648.6
V.C. 40'

1ST STREET - 1+80± TO 7+84±

Exc. 12,934 C.Y. (INCLUDES 259 C.Y. SUBCUT)
EMB. 143 C.Y.
WASTE 7,791 C.Y. (Exc. FROM STA. 6+50± TO 7+84± AND SUBCUT Exc.)
USE 5,000 C.Y. FROM STA. 1+80± TO 6+50± IN EMBANKMENT SOUTH OF THE NEW STRUCTURE.



Inlet No.	#11	#12	#12A
Type	1 - D Grate	D Grate	Inlet, Catch Basin - 6" Beehive
Station	2+09.3 Rt. Gutter	1+ Lt. Gutter	1+90 - 30' Lt. Office Loc. Sta.)
Grate	1646.97	1646.87	1646.20
Base	1643.28	1643.08	1643.28
Invert	1643.45	1643.45	1643.45
Outlet	1643.25	1642.25	1643.25
"H"	3.1'	3.2'	2.34'

* Top of Frame
(Top of Beehive Cover = 1646.70)