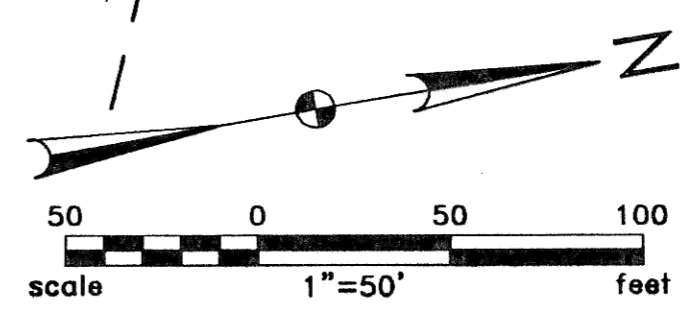


- CONSTRUCTION NOTES**
- UTILITY LOCATIONS SHOWN ON THE PLANS ARE APPROXIMATE. THE CONTRACTOR SHALL BE RESPONSIBLE FOR LOCATING ALL UTILITIES PRIOR TO ANY CONSTRUCTION ACTIVITY. THE NORTH DAKOTA "ONE-CALL" NUMBER IS 1-800-795-0555.
  - APPROXIMATE TOP OF ROAD SUBGRADE SHALL BE BY OTHERS. PRIOR TO CONSTRUCTION, CONTRACTOR WILL HAVE TO SHAPE SUBGRADE AS REQUIRED TO CONSTRUCT ROADWAYS.
  - CONTRACTOR SHALL PROTECT ALL SURVEY MONUMENTS. MONUMENTS SHALL BE LOCATED AND MARKED BY THE OWNER'S REPRESENTATIVE. MONUMENTS DISTURBED OR DESTROYED SHALL BE REPLACED BY THE OWNER'S REPRESENTATIVE AT THE CONTRACTOR'S EXPENSE.
  - THE CONTRACTOR SHALL REMOVE AND DISPOSE OF ALL ASPHALT PAVEMENT AND CURB & GUTTER TO A LEGAL OFF SITE LOCATION AS REQUIRED TO MAKE TIE-INS TO THE EXISTING STREETS.
  - THE CITY OF MANDAN WILL HIRE AN INDEPENDENT TESTING LABORATORY TO COMPLETE ALL REQUIRED TESTING. SCHEDULING AND COORDINATION OF ALL TESTING WILL BE THE CONTRACTOR'S RESPONSIBILITY.
  - WATER AND SEWER ON 34TH AVENUE AND 45TH STREET SHALL BE COMPLETED BY OTHERS PRIOR TO PAVING.

Lot	Block	4" Sewer Service Pipe	8" x 4" Wye Branch	7" Poly Water Service Line	7" Water Service Connection	1-1/4" Stop & 1-1/4" Box	Approximate Curb Stop Location (Station)	MH #	Station	Direction	Approx. Wye Location
1	1	39	1	1	70	1	1	1+73.6	1	0+24	E
2	1	37	1	1	70	1	1	2+39.8	1	0+88	E
3	1	38	1	1	70	1	1	3+05.4	1	1+53	E
4	1	39	1	1	70	1	1	3+67.4	1	2+15	E
5	1	41	1	1	70	1	1	4+97.3	2	0+84	E
6	1	42	1	1	70	1	1	5+58.6	2	1+45	E
7	1	43	1	1	70	1	1	6+18.6	2	2+05	E
8	1	45	1	1	70	1	1	6+78.6	2	2+65	E
9	1	46	1	1	70	1	1	7+38.6	2	3+25	E
10	1	47	1	1	70	1	1	8+04.3	2	3+90	E
11	1	38	1	1	70	1	1	8+74.2	3	0+62	E
12	1	31	1	1	70	1	1	9+38.7	3	1+27	E
13	1	28	1	1	70	1	1	10+04.0	3	1+92	E
TOTAL		514	13	13	910	13	13				

Manhole Number	1	2	3
Casting Elev.	1957.56	1952.60	1955.50
Top P.C. Section	1956.52	1951.56	1954.46
Invert Elev. N	1946.74	1944.83	1946.53
Invert Elev. E	-	1944.73	-
Invert Elev. S	-	1944.83	1946.43
Invert Elev. W	-	-	-
Length P.C. Section	10.82	6.73	8.03



**CIRCULAR**  
 Da 04°00'01" PI Sta 2+13.64  
 T 69.40 N 437486.59  
 R 1432.34 E 1858393.99  
 L 138.69 105°32'52"R

**CIRCULAR**  
 Da 04°59'54" PI Sta 9+19.63  
 T 138.21 N 438183.32  
 R 1146.28 E 1858508.67  
 L 275.09 113°45'00"R

PI STA 0+17.10 LT PI STA 0+22.30 RT  
 PI EL 1964.85 PI EL 1964.53  
 BEGIN CURB BEGIN CURB

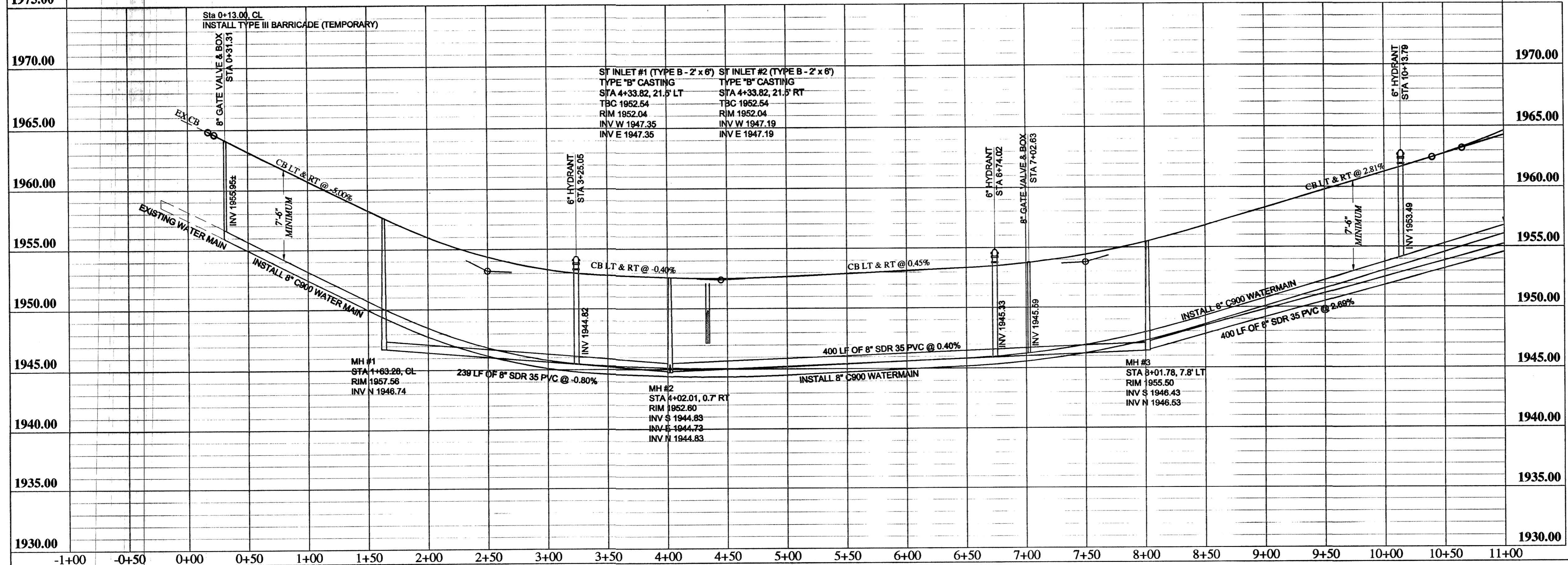
PI STA 2+50.00 LT & RT  
 PI EL 1953.21  
 CURVE LEN 200.00

PI STA 4+45.00 LT & RT  
 PI EL 1952.43  
 CURVE LEN 100.00

PI STA 7+50.00 LT & RT  
 PI EL 1953.80  
 CURVE LEN 200.00

PI STA 10+64.96 RT  
 PI EL 1963.22  
 CURVE LEN 50.00

Station	Quantity	Station	Quantity
STA 0+31.31	BEGIN WATER MAIN QUANTITIES	STA 6+74.02 LT	8"x6" TEE
STA 0+31.31	BEGIN SAN SEWER MAIN QUANTITIES	STA 6+74.02 LT	10 LF OF 6" PVC
STA 1+63.28	STA 0+31.31, 19.50 LT REMOVE PLUG AND INSTALL 8" GATE VALVE AND BOX	STA 7+02.63 LT	8" GATE VALVE & BOX
		STA 10+13.79 LT	8"x6" TEE
		STA 10+13.79 LT	10 LF OF 6" PVC
		END WATER MAIN QUANTITIES	END SAN SEWER MAIN QUANTITIES
		STA 10+50.00	STA 10+50.00



**APPROXIMATE QUANTITIES**

Item	Quantity
<b>Paving Items</b>	
Subgrade Prep	5484 SY
Watering	23 MGal
AC Stabilized Base	662 Ton
Asphalt Cement (PG58-28)	41 Ton
AC Surfacing Course	530 Ton
Asphalt Cement (PG58-28)	33 Ton
Bituminous Tack Coat	239 Gal
Bituminous Seal Coat	1620 Gal
Cover Aggregate	67 Ton
Blotter Aggregate	3 Ton
Curbs and Gutter (Unreinforced)	2092 LF
Adjust Manhole	3 EA
Type III Barricade (Temporary)	1 EA
<b>San. Sewer Items</b>	
8" Sanitary Sewer Pipe	885 LF
4" Sanitary Sewer Service	514 LF
8" x 4" PVC Wyes	13 EA
Pitrun Gravel	190 TON
Subcut Gravel	28 TON
Rock Excavation	2 TON
Concrete Manhole	3 EA
<b>Watermain Items</b>	
Pitrun Gravel	374 TON
Subcut Gravel	40 TON
Rock Excavation	5 TON
6" Watermain	30 LF
8" Watermain	1024 LF
6" Hydrant	3 EA
8" Gate Valve & Box	3 EA
8" Gate Valve & Box	2 EA
1" Copper Service	910 LF
1" Curb Stop & 1 1/4" Box	13 EA
1" Service Connection	13 EA



RECORD DRAWING

Rev'd.	MEADOWS 2ND ADDITION STREET IMPROVEMENT DISTRICT NO. 2005-28 MANDAN, NORTH DAKOTA	SHEET NO. <b>6</b>
<b>Kadmas Lee &amp; Jackson</b> Engineers Surveyors Planners	37TH AVENUE PLAN AND PROFILE	
DRWN. BY ADA	CHK'D BY BE	CMP'R. NO. 1406103
DATE 04/24/07		
J:\municipal\1406103 - Meadows Streets\CADD\EP\RCp37TH1.dwg		
© Kadmas, Lee & Jackson, Inc. 2006		