

- CONSTRUCTION NOTES**
- UTILITY LOCATIONS SHOWN ON THE PLANS ARE APPROXIMATE. THE CONTRACTOR SHALL BE RESPONSIBLE FOR LOCATING ALL UTILITIES PRIOR TO ANY CONSTRUCTION ACTIVITY. THE NORTH DAKOTA "ONE-CALL" NUMBER IS 1-800-795-0555.
 - APPROXIMATE TOP OF ROAD SUBGRADE SHALL BE BY OTHERS. PRIOR TO CONSTRUCTION, CONTRACTOR WILL HAVE TO SHAPE SUBGRADE AS REQUIRED TO CONSTRUCT ROADWAYS.
 - CONTRACTOR SHALL PROTECT ALL SURVEY MONUMENTS. MONUMENTS SHALL BE LOCATED AND MARKED BY THE OWNER'S REPRESENTATIVE. MONUMENTS DISBURSED OR DESTROYED SHALL BE REPLACED BY THE OWNER'S REPRESENTATIVE AT THE CONTRACTOR'S EXPENSE.
 - THE CONTRACTOR SHALL REMOVE AND DISPOSE OF ALL ASPHALT PAVEMENT AND CURB & GUTTER TO A LEGAL OFF SITE LOCATION AS REQUIRED TO MAKE TIE-INS TO THE EXISTING STREETS.
 - THE CITY OF MANDAN WILL HIRE AN INDEPENDENT TESTING LABORATORY TO COMPLETE ALL REQUIRED TESTING, SCHEDULING AND COORDINATION OF ALL TESTING WILL BE THE CONTRACTOR'S RESPONSIBILITY.
 - REMOVAL AND RESET OF "PAVEMENT ENDS" SIGN SHALL BE INCIDENTAL TO OTHER BID ITEMS.

Structure Number	Inlet 1	MH 2	MH 1
Top of Ditch	1827.66	1827.06	1825.06
Top P.C. Section	1826.66	1826.02	1824.02
Invert Elev. N	1818.34	1818.11	1820.60
Invert Elev. E	-	-	1820.60
Invert Elev. S	1818.24	1818.21	-
Invert Elev. W	-	-	-
Length P.C. Section	8.32'	6.81'	3.82'

Documented Curb Table

Sta 25+21.80, 20.5' LT, 20' Driveway	Sta 25+62.17, 20.5' LT, 20' Driveway	Sta 25+65.97, 20.5' LT, 20' Driveway
--------------------------------------	--------------------------------------	--------------------------------------

Depth Paving Quantities

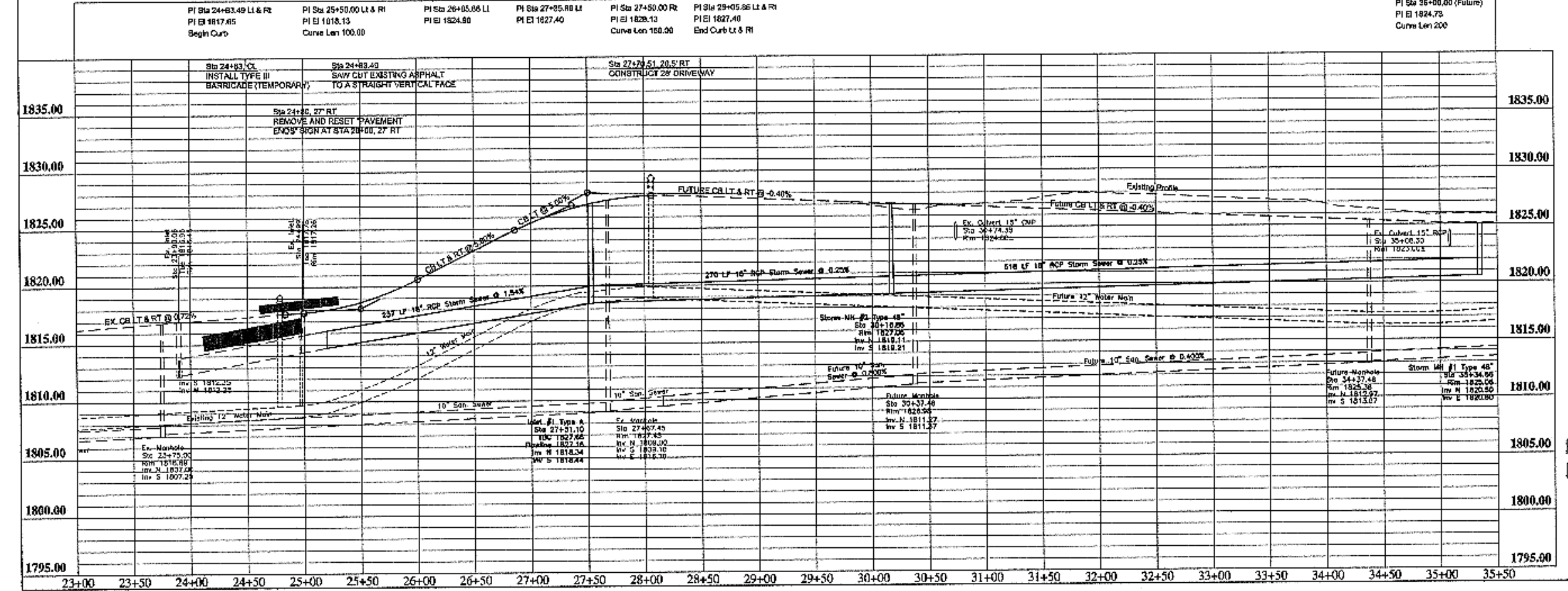
Sta 24+83.49	Sta 24+83.49	Sta 24+83.49
--------------	--------------	--------------

CL Curve Data

Sta 19+08.90*	PI Sta 27+43.88	Sta 29+63.30
T 83.88	N 415473.65	T 44.16
R 300.00	E 187380.11	R 1000.00
L 126.87	124°02'29"	E 1572874.15
		L 68.28

End Slope Rise Quantities

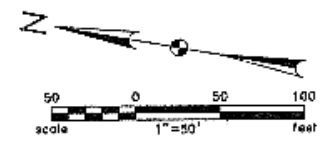
Sta 25+34.66	Sta 25+34.66
--------------	--------------



APPROXIMATE QUANTITIES

Paving Items	Quantity
Watering	8 Mgd
Subgrade Preparation	1733 SY
Stabilized Gravel Base	16 Ton
AC Stabilized Base	209 Ton
Asphalt Cement - Base (PG58-28)	13 Ton
AC Surfacing Course	167 Ton
Asphalt Cement - Surface (PG58-28)	11 Ton
Bituminous Tack Coat	75 Gal
Bituminous Seal Coat	511 Gal
Cover Aggregate	21 Ton
Blotter Sand	1 Ton
6" Concrete Driveway	341 SF
Curb and Gutter (Unreinforced)	599 LF
Adjust Manhole Casting	1 EA
Type III Barricade (Temporary)	1 EA

Storm Sewer Items	Quantity
Pitrun Gravel	254 Ton
Subcut Gravel	20 Ton
18" RCP Sewer	1024 LF
Concrete Manhole 48"	2 EA
Type A 36" Inlet	1 EA



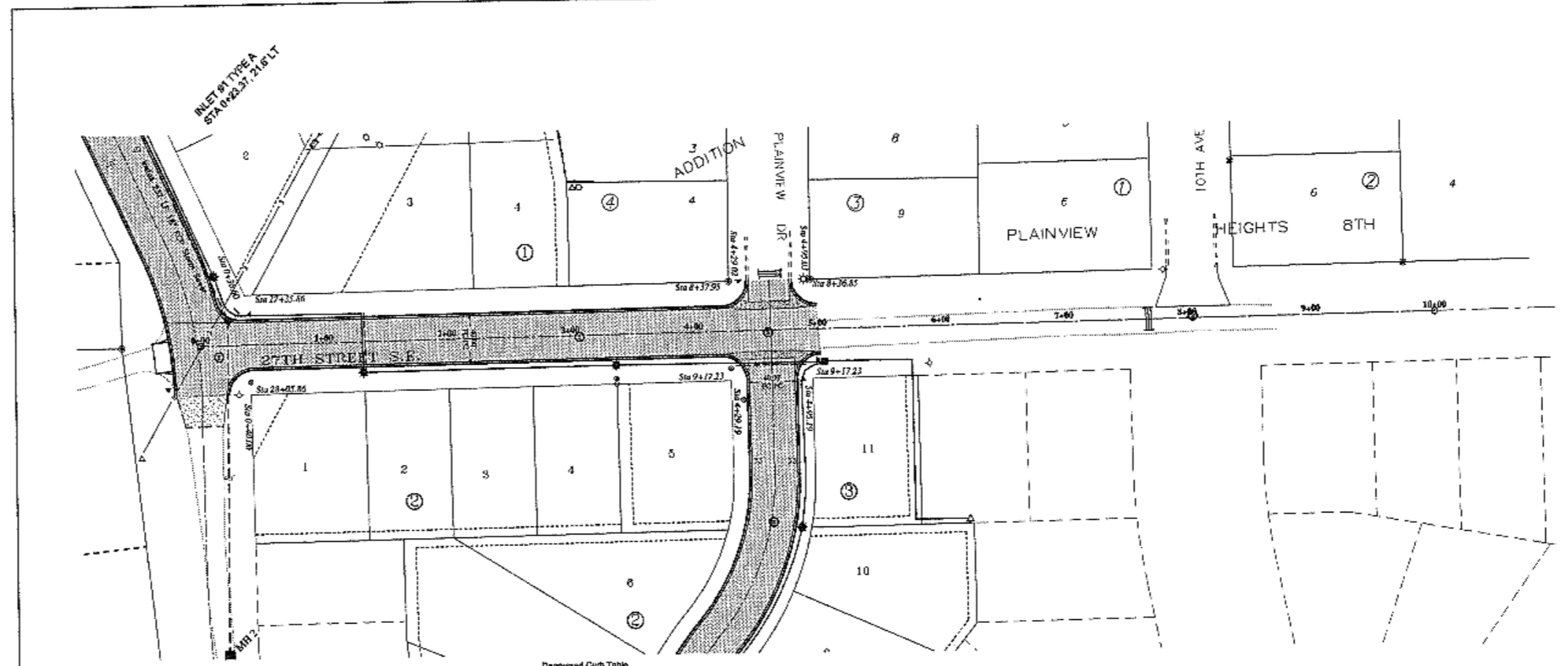
RECORD DRAWING

PLAINVIEW HEIGHT'S TENTH ADDITION
STREET IMPROVEMENT DISTRICT NO. 2006-01
MANDAN, NORTH DAKOTA

Kadmas Lee & Jackson
REGISTERED SURVEYORS
PLANNERS

8TH AVENUE S.E.
PLAN AND PROFILE

DATE: 05/05/06
BY: T.K.
CHECKED: T.K.
SCALE: AS SHOWN



- CONSTRUCTION NOTES**
1. UTILITY LOCATIONS SHOWN ON THE PLANS ARE APPROXIMATE. THE CONTRACTOR SHALL BE RESPONSIBLE FOR LOCATING ALL UTILITIES PRIOR TO ANY CONSTRUCTION ACTIVITY. THE NORTH DAKOTA "ONE-CALL" NUMBER IS 1-800-795-0555.
 2. APPROXIMATE TOP OF ROAD SUBGRADE SHALL BE BY OTHERS. PRIOR TO CONSTRUCTION, CONTRACTOR WILL HAVE TO SHAPE SUBGRADE AS REQUIRED TO CONSTRUCT ROADWAYS.
 3. CONTRACTOR SHALL PROTECT ALL SURVEY MONUMENTS. MONUMENTS SHALL BE LOCATED AND MARKED BY THE OWNER'S REPRESENTATIVE. MONUMENTS DISTURBED OR DESTROYED SHALL BE REPLACED BY THE OWNER'S REPRESENTATIVE AT THE CONTRACTOR'S EXPENSE.
 4. THE CONTRACTOR SHALL REMOVE AND DISPOSE OF ALL ASPHALT PAVEMENT AND CURB & GUTTER TO A LEGAL OFF SITE LOCATION AS REQUIRED TO MAKE TIE-INS TO THE EXISTING STREETS.
 5. THE CITY OF MANDAN WILL HIRE AN INDEPENDENT TESTING LABORATORY TO COMPLETE ALL REQUIRED TESTING. SCHEDULING AND COORDINATION OF ALL TESTING WILL BE THE CONTRACTOR'S RESPONSIBILITY.

BOP 0+00.00
N 413449.78
E 1873870.51

Station Equation
8th Ave SE Sta 27+47.10, 2.51' LI =
27th St SE Sta 0+00.00, CL

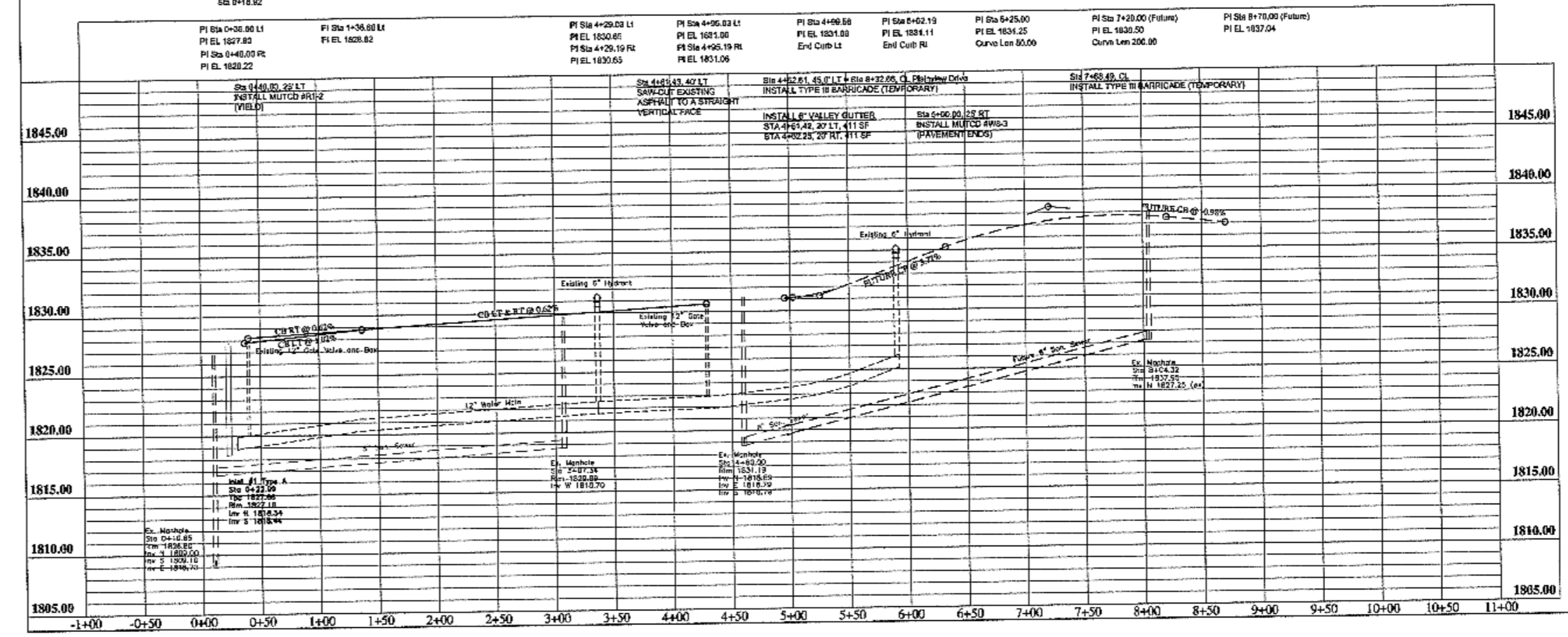
Right Paving Quantities
Sta 0+18.82

Disposed Curb Table
Sta 1+02.26, 18.5' RT, 34' Driveway
Sta 1+74.64, 16.5' RT, 34' Driveway
Sta 1+98.32, 18.5' LT, 20' Driveway
Sta 2+43.24, 18.5' RT, 36' Driveway
Sta 2+71.40, 16.5' LT, 34' Driveway
Sta 3+13.58, 18.5' RT, 34' Driveway

End Paving Quantities
Sta 9+42.19

EOP 10+00.00
N 413468.51
E 1874870.37

Scale: 1"=50'
0 50 100 feet



APPROXIMATE QUANTITIES

Paving Items	Quantity
Watering	11 Mgal
Subgrade Preparation	2441 SY
AC Stabilized Base	280 Ton
Asphalt Cement - Base (PCSB-2B)	18 Ton
AC Surfacing Course	225 Ton
Asphalt Cement - Surface (PCSB-2B)	14 Ton
Bituminous Tack Coat	101 Gal
Bituminous Seal Coat	686 Gal
Cover Aggregate	30 Ton
Blotter Sand	1 Ton
Curb and Gutter (Unreinforced)	863 LF
6" Concrete Valley Gutter (Reinforced)	822 SF
Adjust Manhole Casting	2 EA
Type III Barricade (Temporary)	2 EA
MUTCD #R1-2	1 EA
MUTCD #WB-3	1 EA

RECORD
DRAWING

Rev: 1

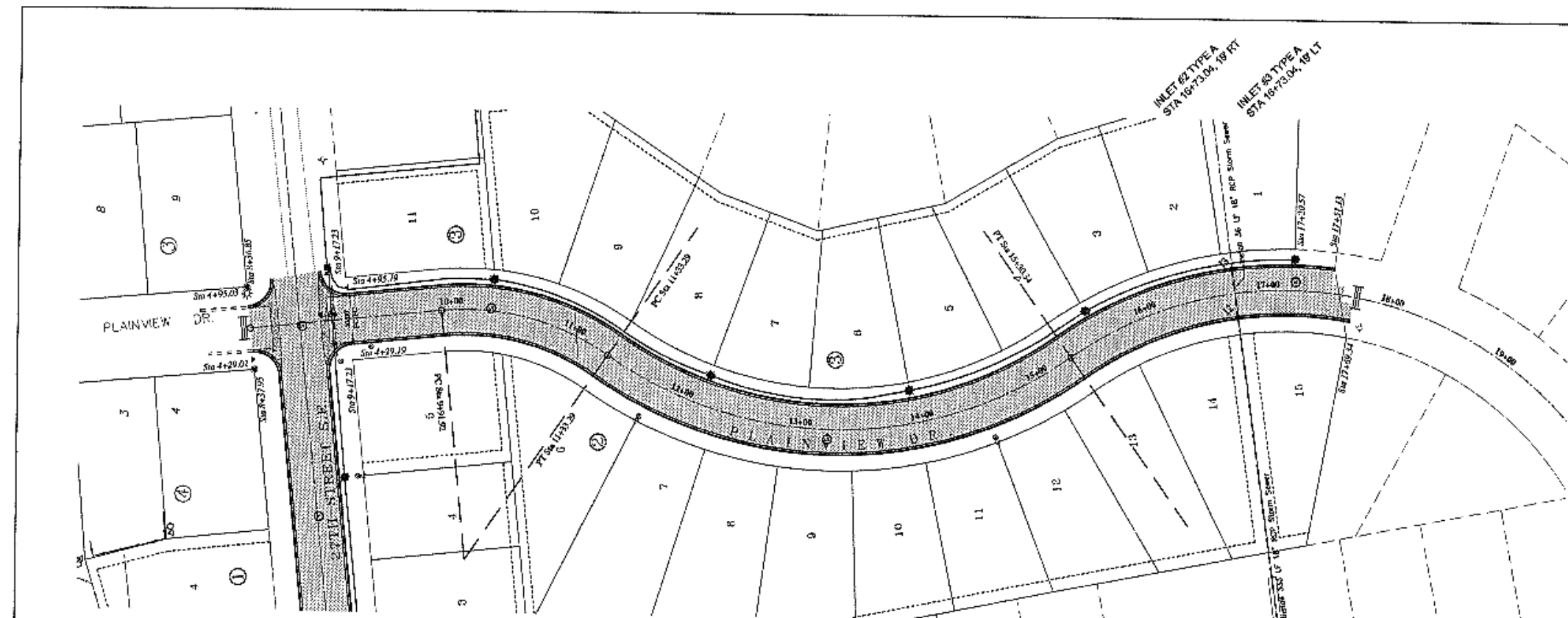
PLAINVIEW HEIGHTS TENTH ADDITION
STREET IMPROVEMENT DISTRICT NO. 2008-01
MANDAN, NORTH DAKOTA

Sheet No. 6

Kadmas Lee & Jackson
27TH STREET S.E.
PLAN AND PROFILE

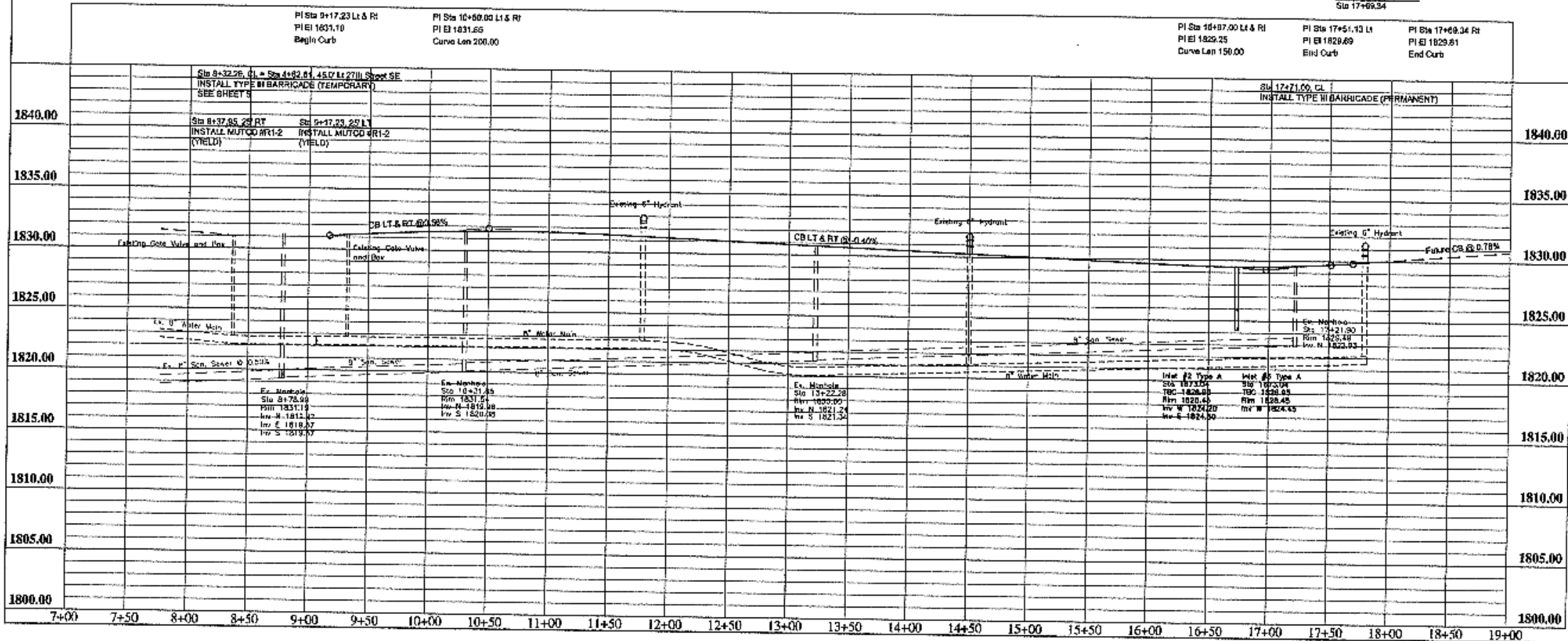
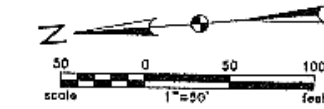
Register: Registered Professional Engineer
No. 140504
Date: 03/25/08

© Kadmas, Lee & Jackson, Inc. 2008



- CONSTRUCTION NOTES**
1. UTILITY LOCATIONS SHOWN ON THE PLANS ARE APPROXIMATE. THE CONTRACTOR SHALL BE RESPONSIBLE FOR LOCATING ALL UTILITIES PRIOR TO ANY CONSTRUCTION ACTIVITY. THE NORTH DAKOTA "ONE-CALL" NUMBER IS 1-800-795-0555.
 2. APPROXIMATE TOP OF ROAD SUBGRADE SHALL BE BY OTHERS, PRIOR TO CONSTRUCTION. CONTRACTOR WILL HAVE TO SHAPE SUBGRADE AS REQUIRED TO CONSTRUCT ROADWAYS.
 3. CONTRACTOR SHALL PROTECT ALL SURVEY MONUMENTS. MONUMENTS SHALL BE LOCATED AND MARKED BY THE OWNER'S REPRESENTATIVE. MONUMENTS DISTURBED OR DESTROYED SHALL BE REPLACED BY THE OWNER'S REPRESENTATIVE AT THE CONTRACTOR'S EXPENSE.
 4. THE CONTRACTOR SHALL REMOVE AND DISPOSE OF ALL ASPHALT PAVEMENT AND CURB & GUTTER TO A LEGAL OFF SITE LOCATION AS REQUIRED TO MAKE TIE-INS TO THE EXISTING STREETS.
 5. THE CITY OF WANDAN WILL HIRE AN INDEPENDENT TESTING LABORATORY TO COMPLETE ALL REQUIRED TESTING, SCHEDULING AND COORDINATION OF ALL TESTING WILL BE THE CONTRACTOR'S RESPONSIBILITY.

Station Equations		CL Curve Data		Depressed Curb Table		CL Curve Data		Depressed Curb Table	
BOP 0+37.26	Station Equations	Sta 20+39.52	PI Sta 10+65.76	Sta 0+48.25	Sta 13+76.05	Sta 17+51.13	PI Sta 17+51.13	Sta 10+42.50	Sta 17+42.50
N 413497.48	27m SE Sta 4+62.15, 40' LT =	Y 73.78	N 413289.07	Sta 10+02.00	Sta 10+02.00	T 227.50	N 413289.07	Sta 10+42.50	Sta 17+42.50
E 1874331.97	Plainview Dr Sta 8+37.26, CL	R 200.00	E 1874335.78	Sta 11+02.00	Sta 11+02.00	R 325.00	E 1874143.96	Sta 10+42.50	Sta 17+42.50
	Begin Paving Quantities	L 141.38	140°29'50"R	Sta 11+98.28	Sta 11+98.28	L 397.00	139°59'57"L	Sta 10+42.50	Sta 17+42.50
	Sta 0+06.25			Sta 12+14.91	Sta 12+14.91			Sta 10+42.50	Sta 17+42.50
				Sta 12+47.80	Sta 12+47.80			Sta 10+42.50	Sta 17+42.50
				Sta 12+78.42	Sta 12+78.42			Sta 10+42.50	Sta 17+42.50
				Sta 13+16.42	Sta 13+16.42			Sta 10+42.50	Sta 17+42.50
				Sta 13+57.00	Sta 13+57.00			Sta 10+42.50	Sta 17+42.50

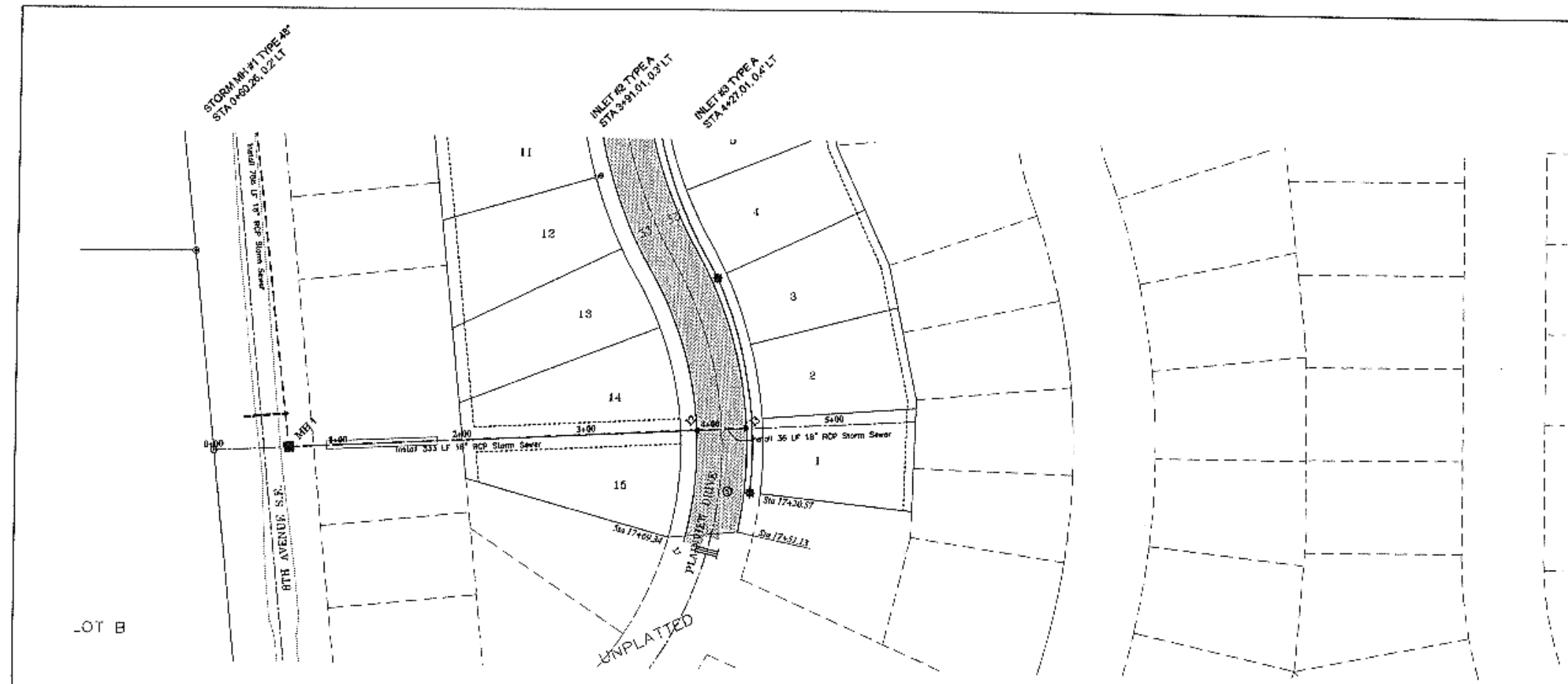


APPROXIMATE QUANTITIES

Paving Items	Quantity
Watering	18 Mgal
Subgrade Preparation	4166 SY
AC Stabilized Base	491 Ton
Asphalt Cement - Base (PG58-28)	31 Ton
AC Surfacing Course	393 Ton
Asphalt Cement - Surface (PG58-28)	25 Ton
Bituminous Tack Coat	177 Gal
Bituminous Seal Coat	1202 Gal
Cover Aggregate	49 Ton
Blotter Sand	2 Ton
Curb and Gutter (Unreinforced)	1748 LF
Adjust Manhole Coating	3 EA
Type III Barricade (Permanent)	1 EA
MUTCD #R1-2	2 EA

RECORD DRAWING

PLAINVIEW HEIGHTS TENTH ADDITION STREET IMPROVEMENT DISTRICT NO. 2006-01 WANDAN, NORTH DAKOTA		SHEET NO. 7
Kadmas Lee & Jackson Engineers Planners		PLAINVIEW DRIVE PLAN AND PROFILE
DATE: 03/11/11 DRAWN BY: JKL CHECKED BY: JKL	DATE: 03/11/11 DRAWN BY: JKL CHECKED BY: JKL	DATE: 03/11/11 DRAWN BY: JKL CHECKED BY: JKL



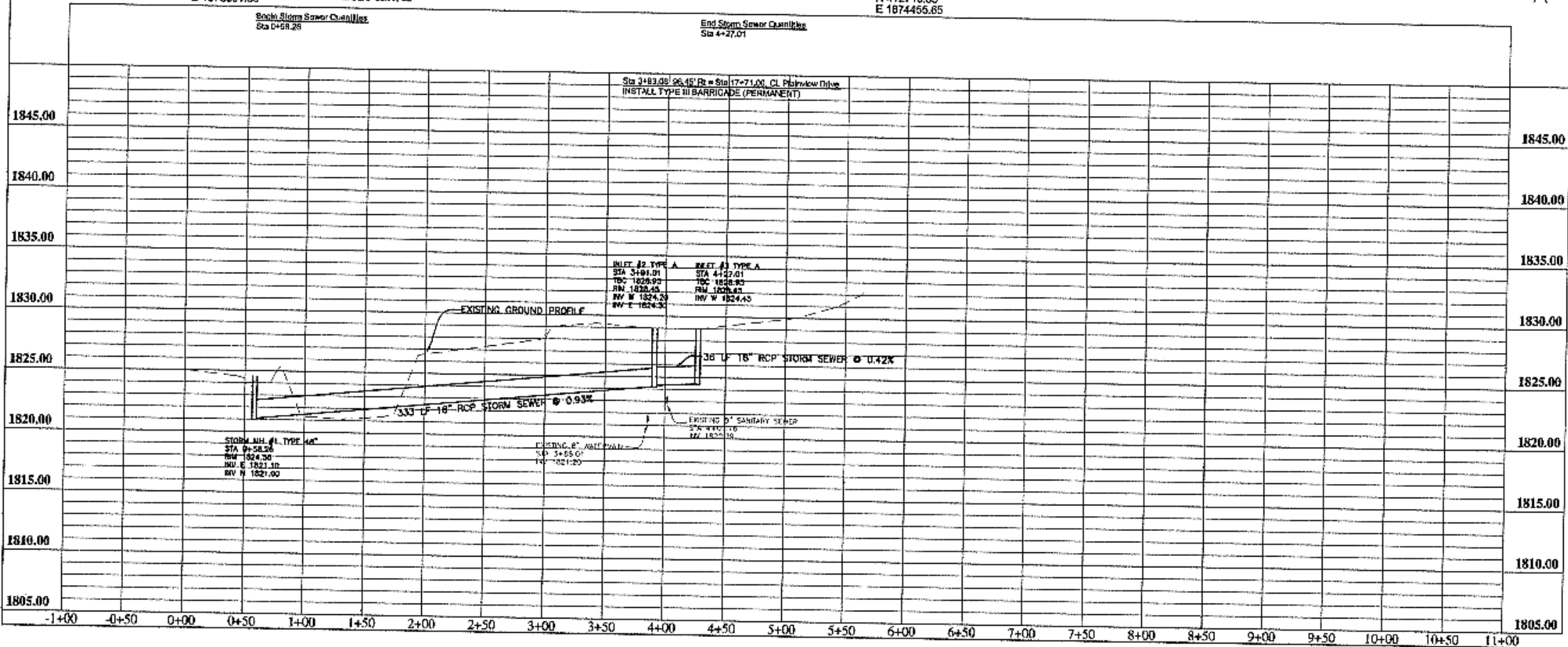
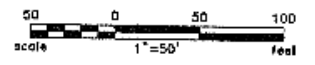
- CONSTRUCTION NOTES**
1. CONTRACTOR SHALL USE EXCESS EXCAVATION MATERIALS ONSITE TO BACKFILL EXPOSED STORM SEWER IN FORMER DETENTION POND AREA. SEE DETAIL SHEET 2.
 2. CONTRACTOR SHALL USE CARE AS NOT TO DISTURB EXISTING SANITARY SEWER BEDDING/EMBANKMENT BETWEEN STA 3+91.01 TO STA 4+27.01. SHOULD THE BEDDING/EMBANKMENT BE DISTURBED, IN THE ENGINEER'S JUDGEMENT, THE CONTRACTOR WILL BE RESPONSIBLE FOR RECOMPACTING THE SANITARY TRENCH PRIOR TO PLACING THE STORM SEWER BETWEEN THESE STATIONS. THE CONTRACTOR SHALL USE CARE WHEN COMPACTING STORM SEWER BEDDING OVER THE SANITARY LINE.

Inlet Number	2	3
Top of Curb	1828.85	1828.85
Top P.C. Section	1827.95	1827.95
Invert Elev. N	-	-
Invert Elev. E	1824.30	-
Invert Elev. S	-	-
Invert Elev. W	1824.20	1824.45
Length P.C. Section	3.75'	3.50'

BOP 0+00.00
 N 412832.47
 E 1873851.88

BW&N Easement
 8th Ave 85' Sta 25+31.38, 40.00' R+
 Storm Easement Sta 0+00.00, CL

EOP 5+64.81
 N 412713.35
 E 1874466.65



APPROXIMATE QUANTITIES

Storm Sewer Items	Quantity
Plumbed Gravel	87 Ton
Subcut Gravel	8 Ton
18" RCP Sewer	367 LF
Type A 36" Inlet	2 EA

RECORD DRAWING

Rev'd	PLAINVIEW HEIGHTS TENTH ADDITION STREET IMPROVEMENT DISTRICT 2008-01 HARRIS, NORTH CAROLINA	SHEET NO. 8
Kadmas Lee & Jackson Engineers, Surveyors Planners	STATION 454	DATE 10/21/08
PROJECT Stormwater Easement	PLANNED BY Town of Harris	DATE 10/21/08
Kadmas, Lee & Jackson, Inc. 2008		