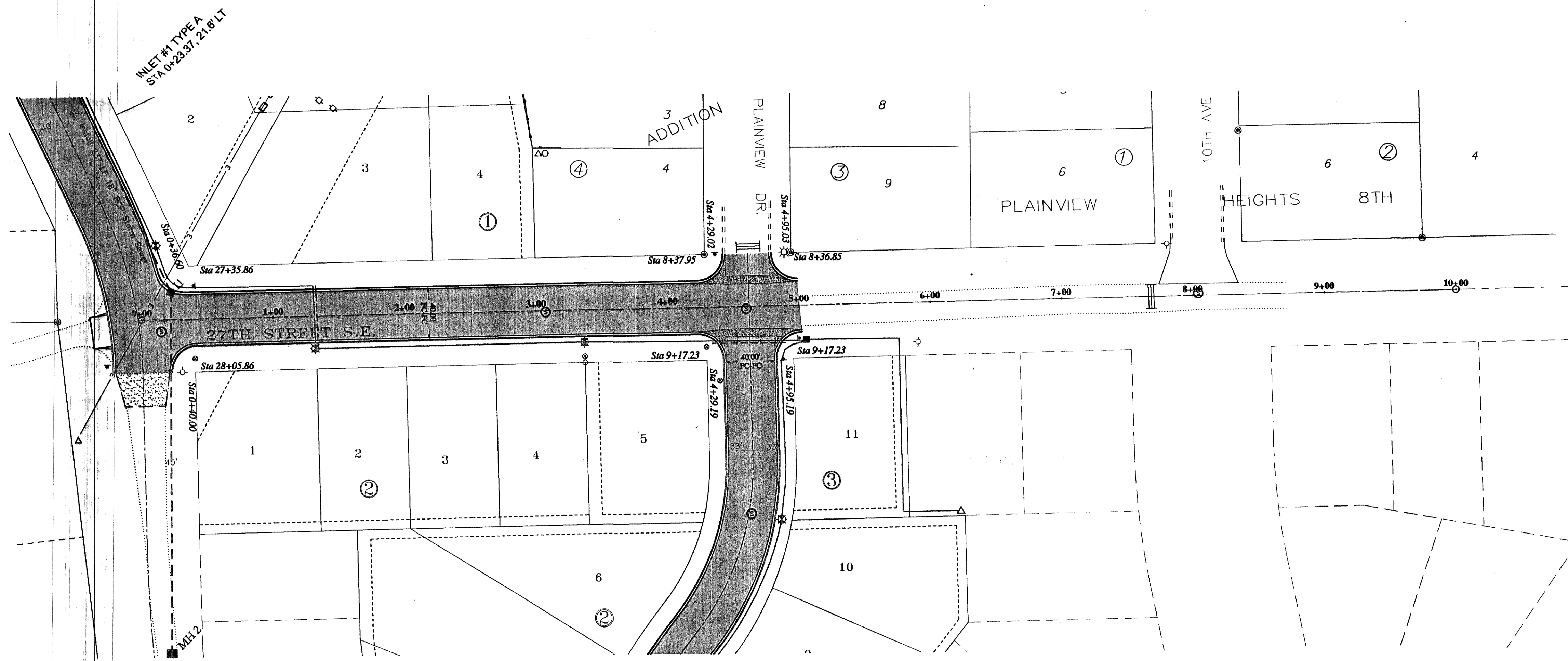


**CONSTRUCTION NOTES**

- UTILITY LOCATIONS SHOWN ON THE PLANS ARE APPROXIMATE. THE CONTRACTOR SHALL BE RESPONSIBLE FOR LOCATING ALL UTILITIES PRIOR TO ANY CONSTRUCTION ACTIVITY. THE NORTH DAKOTA "ONE-CALL" NUMBER IS 1-800-795-0555.
- APPROXIMATE TOP OF ROAD SUBGRADE SHALL BE BY OTHERS. PRIOR TO CONSTRUCTION. CONTRACTOR WILL HAVE TO SHAPE SUBGRADE AS REQUIRED TO CONSTRUCT ROADWAYS.
- CONTRACTOR SHALL PROTECT ALL SURVEY MONUMENTS. MONUMENTS SHALL BE LOCATED AND MARKED BY THE OWNER'S REPRESENTATIVE. MONUMENTS DISTURBED OR DESTROYED SHALL BE REPLACED BY THE OWNER'S REPRESENTATIVE AT THE CONTRACTOR'S EXPENSE.
- THE CONTRACTOR SHALL REMOVE AND DISPOSE OF ALL ASPHALT PAVEMENT AND CURB & GUTTER TO A LEGAL OFF SITE LOCATION AS REQUIRED TO MAKE TIE-INS TO THE EXISTING STREETS.
- THE CITY OF MANDAN WILL HIRE AN INDEPENDENT TESTING LABORATORY TO COMPLETE ALL REQUIRED TESTING. SCHEDULING AND COORDINATION OF ALL TESTING WILL BE THE CONTRACTOR'S RESPONSIBILITY.



**Depressed Curb Table**

Sta 1+02.36, 18.5' RT, 34' Driveway
Sta 1+74.84, 18.5' RT, 34' Driveway
Sta 1+98.32, 18.5' LT, 26' Driveway
Sta 2+43.84, 18.5' RT, 36' Driveway
Sta 2+71.40, 18.5' LT, 34' Driveway
Sta 3+13.56, 18.5' RT, 34' Driveway

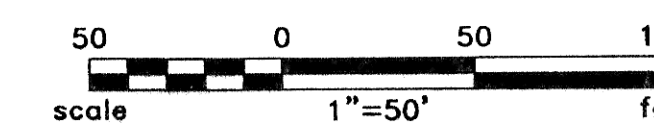
BOP 0+00.00  
N 413449.78  
E 1873870.51

Station Equation  
8th Ave SE Sta 27+67.10, 2.31' LI =  
27th St SE Sta 0+00.00, CL

Begin Paving Quantities  
Sta 0+16.82

End Paving Quantities  
Sta 5+02.19

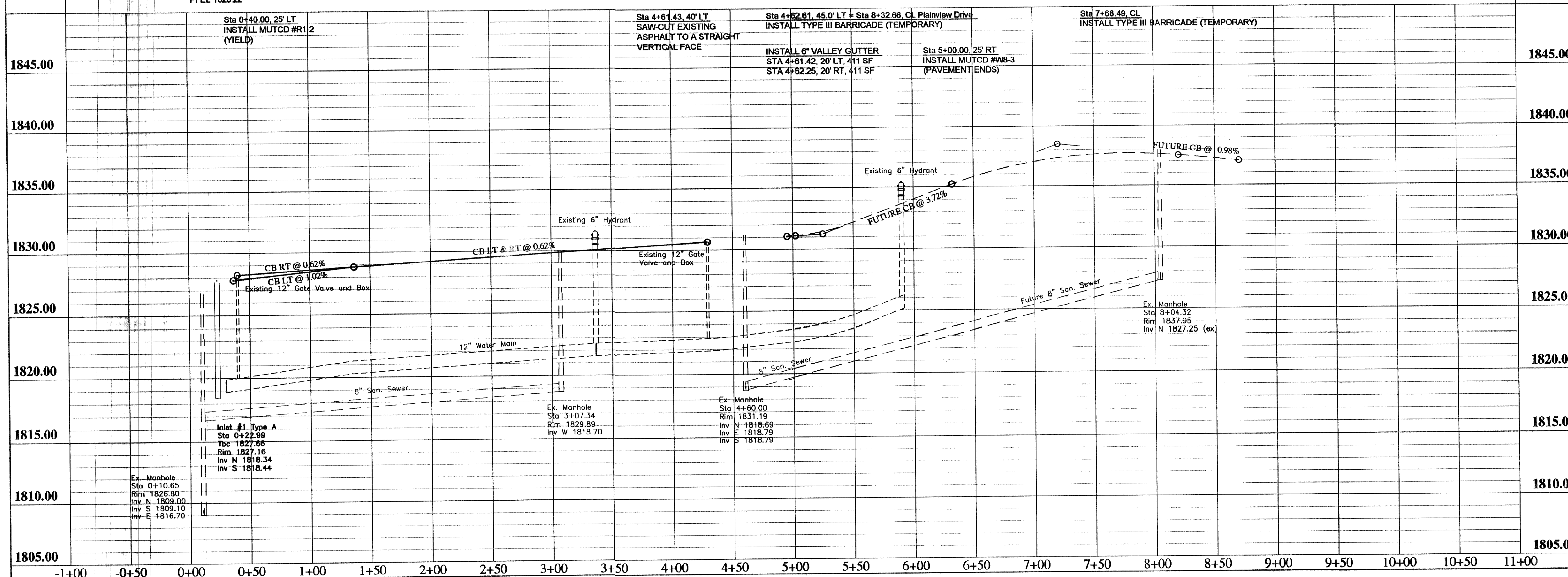
EOP 10+00.00  
N 413466.51  
E 1874870.37



PI Sta 0+36.60 Lt PI EL 1827.80 PI Sta 0+40.00 Rt PI EL 1828.22	PI Sta 1+36.60 Lt PI EL 1828.82	PI Sta 4+29.03 Lt PI EL 1830.65 PI Sta 4+29.19 Rt PI EL 1830.65	PI Sta 4+95.03 Lt PI EL 1831.06 PI Sta 4+95.19 Rt PI EL 1831.06	PI Sta 4+99.56 PI EL 1831.09 End Curb Lt	PI Sta 5+02.19 PI EL 1831.11 End Curb Rt	PI Sta 5+25.00 PI EL 1831.25 Curve Len 50.00	PI Sta 7+20.00 (Future) PI EL 1838.50 Curve Len 200.00	PI Sta 8+70.00 (Future) PI EL 1837.04
--	------------------------------------	--	--	--	--	--	--	--

**APPROXIMATE QUANTITIES**

Paving Items	Quantity
Watering	11 Mgal
Subgrade Preparation	2441 SY
AC Stabilized Base	280 Ton
Asphalt Cement - Base (PG58-28)	18 Ton
AC Surface Course	225 Ton
Asphalt Cement - Surface (PG58-28)	14 Ton
Bituminous Tack Coat	101 Gal
Bituminous Seal Coat	686 Gal
Cover Aggregate	30 Ton
Blotter Sand	1 Ton
Curb and Gutter (Unreinforced)	863 LF
6" Concrete Valley Gutter (Reinforced)	822 SF
Adjust Manhole Casting	2 EA
Type III Barricade (Temporary)	2 EA
MUTCD #R1-2	1 EA
MUTCD #WB-3	1 EA



RECORD  
DRAWING

Rev'd.	PLAINVIEW HEIGHTS TENTH ADDITION STREET IMPROVEMENT DISTRICT NO. 2006-01 MANDAN, NORTH DAKOTA	SHEET NO. <b>6</b>
<b>Kadmas Lee &amp; Jackson</b> Engineers Surveyors Planners DRWN BY: ADA, CHK'D BY: TK, CMPR. NO.: 1406104, DATE: 05/05/06		27TH STREET S.E. PLAN AND PROFILE
© Kadmas, Lee & Jackson, Inc. 2006		