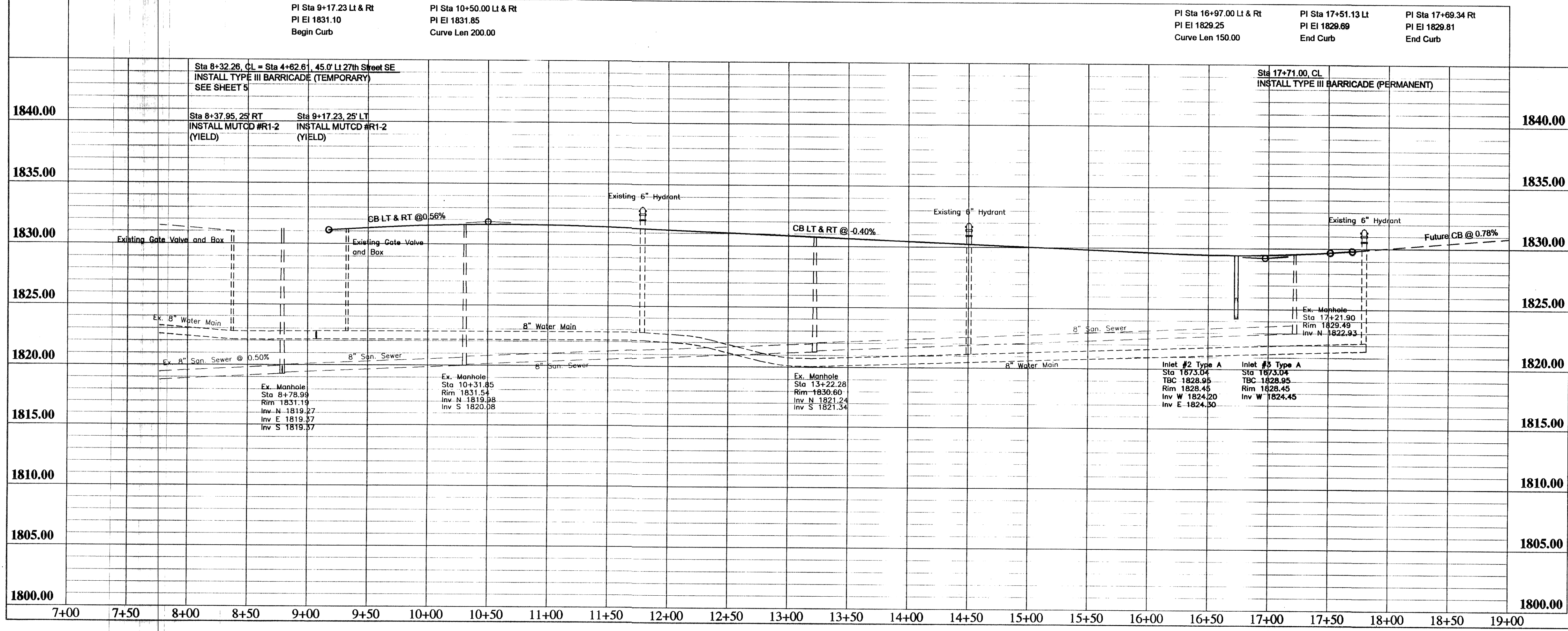
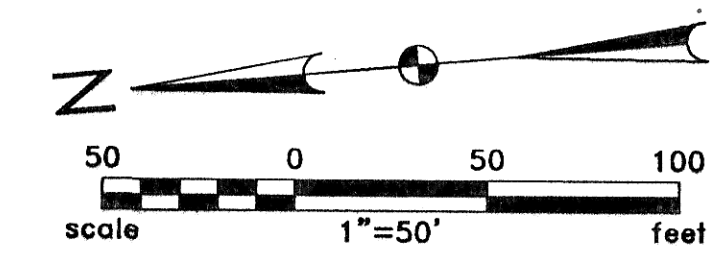


- CONSTRUCTION NOTES**
- UTILITY LOCATIONS SHOWN ON THE PLANS ARE APPROXIMATE. THE CONTRACTOR SHALL BE RESPONSIBLE FOR LOCATING ALL UTILITIES PRIOR TO ANY CONSTRUCTION ACTIVITY. THE NORTH DAKOTA "ONE-CALL" NUMBER IS 1-800-795-0555.
 - APPROXIMATE TOP OF ROAD SUBGRADE SHALL BE BY OTHERS, PRIOR TO CONSTRUCTION. CONTRACTOR WILL HAVE TO SHAPE SUBGRADE AS REQUIRED TO CONSTRUCT ROADWAYS.
 - CONTRACTOR SHALL PROTECT ALL SURVEY MONUMENTS. MONUMENTS SHALL BE LOCATED AND MARKED BY THE OWNER'S REPRESENTATIVE. MONUMENTS DISTURBED OR DESTROYED SHALL BE REPLACED BY THE OWNER'S REPRESENTATIVE AT THE CONTRACTOR'S EXPENSE.
 - THE CONTRACTOR SHALL REMOVE AND DISPOSE OF ALL ASPHALT PAVEMENT AND CURB & GUTTER TO A LEGAL OFF SITE LOCATION AS REQUIRED TO MAKE TIE-INS TO THE EXISTING STREETS.
 - THE CITY OF MANDAN WILL HIRE AN INDEPENDENT TESTING LABORATORY TO COMPLETE ALL REQUIRED TESTING. SCHEDULING AND COORDINATION OF ALL TESTING WILL BE THE CONTRACTOR'S RESPONSIBILITY.

<p>BOP 8+37.26 N 413497.48 E 1874331.97</p> <p>Station Equation 27th St SE Sta 4+62.19, 40' LI = Plainview Dr Sta 8+37.26, CL</p> <p>Begin Paving Quantities Sta 8+36.85</p>	<p>CL Curve Data Da 28°38'52" PI Sta 10+65.70 T 73.78 N 413289.07 R 200.00 E 1874335.79 L 141.38 I 40°29'50"R</p>	<p>Depressed Curb Table Sta 9+95.25, 18.5' LT, 34' Driveway Sta 10+00.00, 18.5' RT, 34' Driveway Sta 10+56.88, 18.5' LT, 34' Driveway Sta 11+10.00, 18.5' LT, 34' Driveway Sta 11+52.27, 18.5' RT, 34' Driveway Sta 11+86.26, 18.5' LT, 34' Driveway Sta 12+11.01, 18.5' RT, 36' Driveway Sta 12+67.50, 18.5' RT, 34' Driveway Sta 12+78.41, 18.5' LT, 28' Driveway Sta 13+18.42, 18.5' RT, 34' Driveway Sta 13+57.00, 18.5' LT, 34' Driveway</p>	<p>CL Curve Data Da 17°37'46" PI Sta 13+60.85 T 227.56 N 413098.67 R 325.00 E 1874143.96 L 397.06 I 69°59'57L</p>	<p>Depressed Curb Table Sta 13+76.89, 18.5' RT, 34' Driveway Sta 14+29.00, 18.5' RT, 26' Driveway Sta 14+56.00, 18.5' LT, 34' Driveway Sta 14+85.94, 18.5' RT, 34' Driveway Sta 15+30.00, 18.5' LT, 34' Driveway Sta 15+50.94, 18.5' RT, 34' Driveway Sta 15+85.30, 18.5' LT, 34' Driveway Sta 16+42.00, 18.5' LT, 34' Driveway Sta 16+46.50, 18.5' RT, 34' Driveway Sta 16+95.00, 18.5' LT, 34' Driveway Sta 17+42.50, 18.5' RT, 34' Driveway</p>	<p>CL Curve Data Da 19°05'55" PI Sta 19+96.25 T 465.91 N 412438.92 R 300.00 E 1874495.51 L 599.23 I 114°26'41"R</p>	<p>EOP 17+69.34 N 412609.86 E 1874290.25</p> <p>End Paving Quantities Sta 17+69.34</p>
--	---	---	---	--	---	--



APPROXIMATE QUANTITIES

Paving Items	Quantity
Watering	18 Mgal
Subgrade Preparation	4166 SY
AC Stabilized Base	491 Ton
Asphalt Cement - Base (PG58-28)	31 Ton
AC Surfacing Course	393 Ton
Asphalt Cement - Surface (PG58-28)	25 Ton
Bituminous Tack Coat	177 Gal
Bituminous Seal Coat	1202 Gal
Cover Aggregate	49 Ton
Blotter Sand	2 Ton
Curb and Gutter (Unreinforced)	1748 LF
Adjust Manhole Casting	3 EA
Type III Barricade (Permanent)	1 EA
MUTCD #R1-2	2 EA



RECORD DRAWING

Rev'd.	PLAINVIEW HEIGHTS TENTH ADDITION STREET IMPROVEMENT DISTRICT NO. 2006-01 MANDAN, NORTH DAKOTA	SHEET NO. 7
		<p>PLAINVIEW DRIVE PLAN AND PROFILE</p>
DRWN. BY ADA	CHK'D BY TK	CMP'R. NO. 1406104
DATE 05/05/06	<p>© Municipality 1406104 - Plainview 10th Streets\CADD\EP\PLAINVIEWDR_PAWN</p> <p>© Kadmas, Lee & Jackson, Inc. 2006</p>	