

**CONSTRUCTION NOTES**

- UTILITY LOCATIONS SHOWN ON THE PLANS ARE APPROXIMATE. THE CONTRACTOR SHALL BE RESPONSIBLE FOR LOCATING ALL UTILITIES PRIOR TO ANY CONSTRUCTION ACTIVITY. THE NORTH DAKOTA "ONE-CALL" NUMBER IS 1-800-795-0535.
- APPROXIMATE TOP OF ROAD SUBGRADE SHALL BE BY OTHERS. PRIOR TO CONSTRUCTION, CONTRACTOR WILL HAVE TO SHAPE SUBGRADE AS REQUIRED TO CONSTRUCT ROADWAYS.
- CONTRACTOR SHALL PROTECT ALL SURVEY MONUMENTS. MONUMENTS SHALL BE LOCATED AND MARKED BY THE OWNER'S REPRESENTATIVE. MONUMENTS DISTURBED OR DESTROYED SHALL BE REPLACED BY THE OWNER'S REPRESENTATIVE AT THE CONTRACTOR'S EXPENSE.
- THE CONTRACTOR SHALL REMOVE AND DISPOSE OF ALL ASPHALT PAVEMENT AND CURB & GUTTER TO A LEGAL OFF SITE LOCATION AS REQUIRED TO MAKE TIE-INS TO THE EXISTING STREETS.
- THE CITY OF MANDAN WILL HIRE AN INDEPENDENT TESTING LABORATORY TO COMPLETE ALL REQUIRED TESTING, SCHEDULING AND COORDINATION OF ALL TESTING WILL BE THE CONTRACTOR'S RESPONSIBILITY.
- REMOVAL AND RESET OF "PAVEMENT ENDS" SIGN SHALL BE INCIDENTAL TO OTHER BID ITEMS.

Structure Number	Inlet 1	MH 2	MH 1
Top of Curb	1827.66	1827.06	1825.06
Top P.C. Section	1826.66	1826.02	1824.02
Invert Elev. N	1818.34	1819.11	1820.50
Invert Elev. E	-	-	1820.60
Invert Elev. S	1818.44	1819.21	-
Invert Elev. W	-	-	-
Length P.C. Section	8.32'	6.81'	3.52'

**Depressed Curb Table**  
 Sta 25+21.60, 20.5' LT, 26' Driveway  
 Sta 25+82.17, 20.5' LT, 26' Driveway  
 Sta 26+65.97, 20.5' LT, 26' Driveway

CONTRACTOR SHALL BLEND STABILIZED GRAVEL BASE SURFACING FROM END OF ASPHALT PAVING TO STA 28+30.

BOP 23+75.00  
 N 413807.97  
 E 1873714.23

**Begin Paving Quantities**  
 Sta 24+83.43

**Begin Storm Sewer Quantities**  
 Sta 25+14.10

**CL Curve Data**  
 Da 19°05'55" PI Sta 27+43.88  
 T 63.88 N 413473.65  
 R 300.00 E 1873870.11  
 L 125.87 124°02'24"

**End Paving Quantities**  
 Sta 28+05.86

**CL Curve Data**  
 Da 05°43'48" PI Sta 29+83.30  
 T 44.18 N 413232.38  
 R 1000.00 E 1873874.15  
 L 88.28 105°03'28"

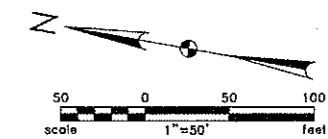
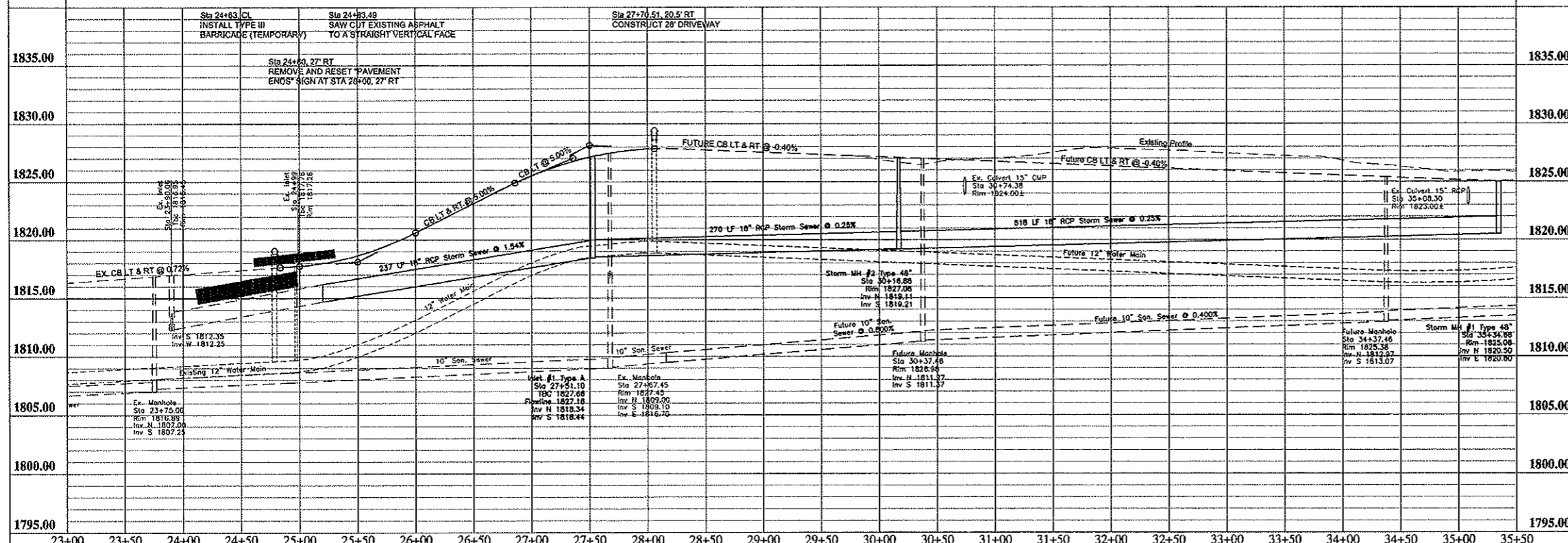
**End Storm Sewer Quantities**  
 Sta 35+34.66

**APPROXIMATE QUANTITIES**

Paving Items	Quantity
Watering	8 Mgal
Subgrade Preparation	1733 SY
Stabilized Gravel Base	16 Ton
AC Stabilized Base	209 Ton
Asphalt Cement - Base (PG58-28)	13 Ton
AC Surface Course	167 Ton
Asphalt Cement - Surface (PG58-28)	11 Ton
Bituminous Tack Coat	75 Gal
Bituminous Seal Coat	511 Gal
Cover Aggregate	21 Ton
Blotter Sand	1 Ton
6" Concrete Driveway	341 SF
Curb and Gutter (Unreinforced)	599 LF
Adjust Manhole Casting	1 EA
Type III Barricade (Temporary)	1 EA

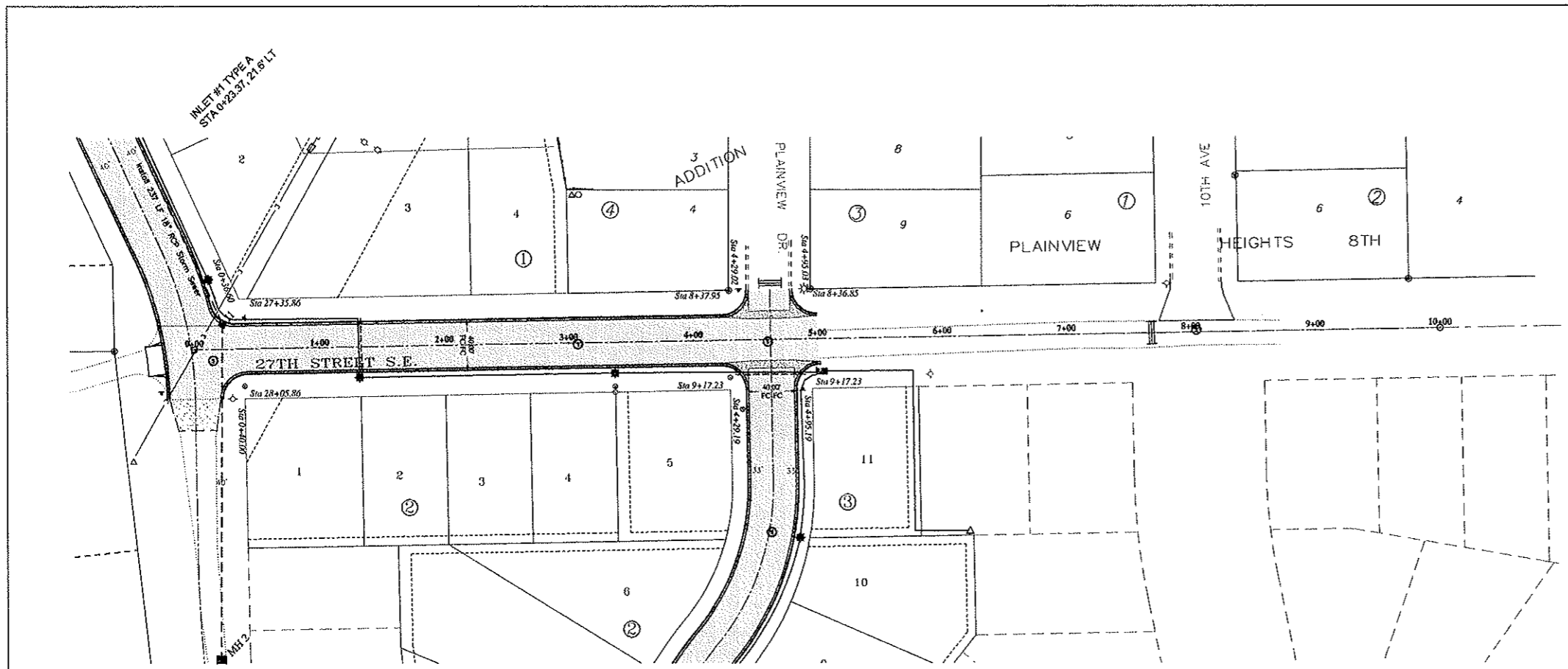
Storm Sewer Items	Quantity
Pitrun Gravel	254 Ton
Subcut Gravel	20 Ton
18" RCP Sewer	1024 LF
Concrete Manhole 48"	2 EA
Type A 36" Inlet	1 EA

PI Sta 24+63.49 LI & RI PI EI 1817.85 Begin Curb	PI Sta 25+50.00 LI & RI PI EI 1816.13 Curve Len 100.00	PI Sta 26+85.86 LI PI EI 1824.90	PI Sta 27+35.88 LI PI EI 1827.40	PI Sta 27+50.00 RI PI EI 1828.13 Curve Len 150.00	PI Sta 28+05.66 LI & RI PI EI 1827.40 End Curb LI & RI	PI Sta 36+00.00 (Future) PI EI 1824.73 Curve Len 200
--	--	-------------------------------------	-------------------------------------	---	--	--

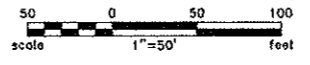


RECORD DRAWING

Rev'd.	PLAINVIEW HEIGHTS TENTH ADDITION STREET IMPROVEMENT DISTRICT NO. 2006-01 MANDAN, NORTH DAKOTA	SHEET NO. <b>5</b>
<b>Kadmas Lee &amp; Jackson</b> Engineers Surveyors Planners	8TH AVENUE S.E. PLAN AND PROFILE	DATE 05/05/06
DESIGNED BY: JDA CHECKED BY: JK CADD BY: JDA DATE: 11/06/04	PROJECT NO.: 1406104 - Plainview 10th Street JOB NO.: 1406104 - Plainview 10th Street	DATE: 05/05/06



- CONSTRUCTION NOTES**
- UTILITY LOCATIONS SHOWN ON THE PLANS ARE APPROXIMATE. THE CONTRACTOR SHALL BE RESPONSIBLE FOR LOCATING ALL UTILITIES PRIOR TO ANY CONSTRUCTION ACTIVITY. THE NORTH DAKOTA "ONE-CALL" NUMBER IS 1-800-795-0555.
  - APPROXIMATE TOP OF ROAD SUBGRADE SHALL BE BY OTHERS. PRIOR TO CONSTRUCTION. CONTRACTOR WILL HAVE TO SHAPE SUBGRADE AS REQUIRED TO CONSTRUCT ROADWAYS.
  - CONTRACTOR SHALL PROTECT ALL SURVEY MONUMENTS. MONUMENTS SHALL BE LOCATED AND MARKED BY THE OWNER'S REPRESENTATIVE. MONUMENTS DISTURBED OR DESTROYED SHALL BE REPLACED BY THE OWNER'S REPRESENTATIVE AT THE CONTRACTOR'S EXPENSE.
  - THE CONTRACTOR SHALL REMOVE AND DISPOSE OF ALL ASPHALT PAVEMENT AND CURB & GUTTER TO A LEGAL OFF SITE LOCATION AS REQUIRED TO MAKE TIE-INS TO THE EXISTING STREETS.
  - THE CITY OF MANDAN WILL HIRE AN INDEPENDENT TESTING LABORATORY TO COMPLETE ALL REQUIRED TESTING. SCHEDULING AND COORDINATION OF ALL TESTING WILL BE THE CONTRACTOR'S RESPONSIBILITY.



BOP 0+00.00  
N 413449.78  
E 1873870.51

Station Equation  
8th Ave SE Sta 27+67.10, 2.31' LT =  
27th St SE Sta 0+00.00, CL

Begin Paving Quantities  
Sta 0+18.92

Depressed Curb Table  
Sta 1+02.35, 18.5' RT, 34' Driveway  
Sta 1+74.84, 18.5' RT, 34' Driveway  
Sta 1+98.32, 18.5' LT, 28' Driveway  
Sta 2+43.84, 18.5' RT, 38' Driveway  
Sta 2+71.40, 18.5' LT, 34' Driveway  
Sta 3+13.58, 18.5' RT, 34' Driveway

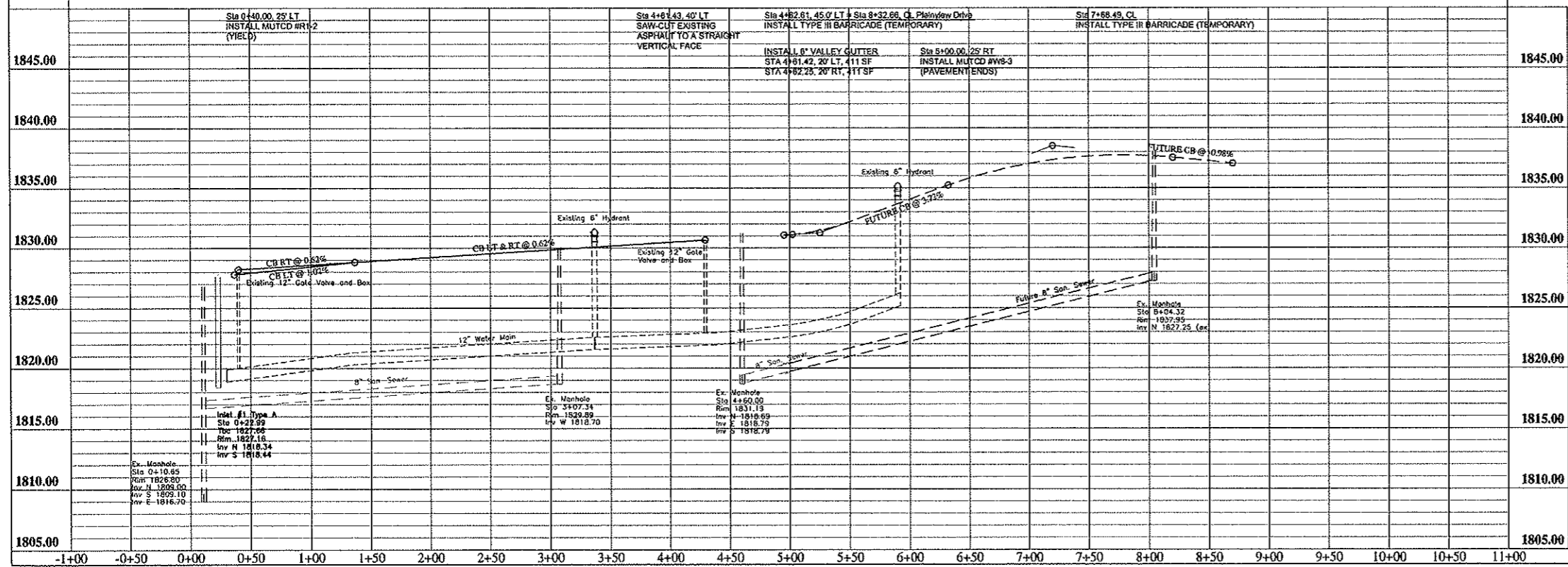
End Paving Quantities  
Sta 5+02.19

EOP 10+00.00  
N 413486.51  
E 1874870.37

PI Sta 0+36.60 Lt	PI Sta 1+36.60 Lt	PI Sta 4+29.03 Lt	PI Sta 4+95.03 Lt	PI Sta 4+99.56	PI Sta 5+02.19	PI Sta 5+25.00	PI Sta 7+20.00 (Future)	PI Sta 8+70.00 (Future)
PI EL 1827.80	PI EL 1828.82	PI EL 1830.65	PI EL 1831.06	PI EL 1831.09	PI EL 1831.11	PI EL 1831.25	PI EL 1838.50	PI EL 1837.04
PI Sta 0+40.00 Rt		PI Sta 4+29.19 Rt	PI Sta 4+95.19 Rt	End Curb Lt	End Curb Rt	Curve Len 50.00	Curve Len 200.00	
PI EL 1828.22		PI EL 1830.65	PI EL 1831.06					

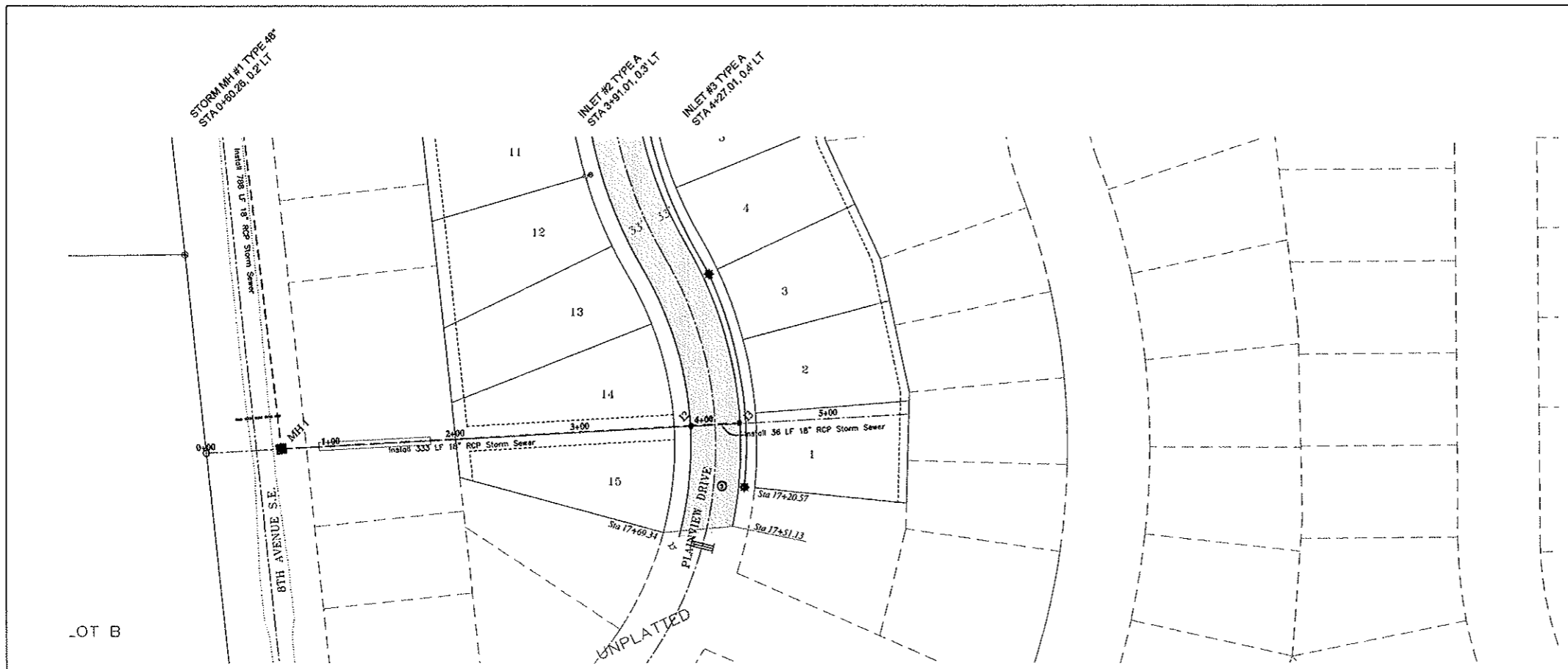
**APPROXIMATE QUANTITIES**

Paving Items	Quantity
Watering	11 Mgal
Subgrade Preparation	2441 SY
AC Stabilized Base	280 Ton
Asphalt Cement - Base (PG58-28)	18 Ton
AC Surface Course	225 Ton
Asphalt Cement - Surface (PG58-28)	14 Ton
Bituminous Tack Coat	101 Gal
Bituminous Seal Coat	686 Gal
Cover Aggregate	30 Ton
Blotter Sand	1 Ton
Curb and Gutter (Unreinforced)	863 LF
6" Concrete Valley Gutter (Reinforced)	822 SF
Adjust Manhole Casting	2 EA
Type III Barricade (Temporary)	2 EA
MUTCD #R1-2	1 EA
MUTCD #WB-3	1 EA



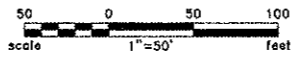
RECORD  
DRAWING

Rev d.	PLAINVIEW HEIGHTS TENTH ADDITION	SHEET NO.
	STREET IMPROVEMENT DISTRICT NO. 2006-01	6
	MANDAN, NORTH DAKOTA	
<b>Kadmas Lee &amp; Jackson</b>	27TH STREET S.E.	PLAN AND PROFILE
Engineers Surveyors Planners	Scale of ADK	Scale of TK
	1406104	05/05/06
J:\municipal\1406104 - Plainview 10th Streets\CADD\EP\27THST_PAVNG.dwg		
© Kadmas, Lee & Jackson, Inc. 2006		



- CONSTRUCTION NOTES**
- CONTRACTOR SHALL USE EXCESS EXCAVATION MATERIALS ONSITE TO BACKFILL EXPOSED STORM SEWER IN FORMER DETENTION POND AREA. SEE DETAIL SHEET 2.
  - CONTRACTOR SHALL USE CARE AS NOT TO DISTURB EXISTING SANITARY SEWER BEDDING/EMBANKMENT BETWEEN STA 3+91.01 TO STA 4+27.01. SHOULD THE BEDDING/EMBANKMENT BE DISTURBED, IN THE ENGINEER'S JUDGEMENT, THE CONTRACTOR WILL BE RESPONSIBLE FOR RECOMPACTING THE SANITARY TRENCH PRIOR TO PLACING THE STORM SEWER BETWEEN THESE STATIONS. THE CONTRACTOR SHALL USE CARE WHEN COMPACTING STORM SEWER BEDDING OVER THE SANITARY LINE.

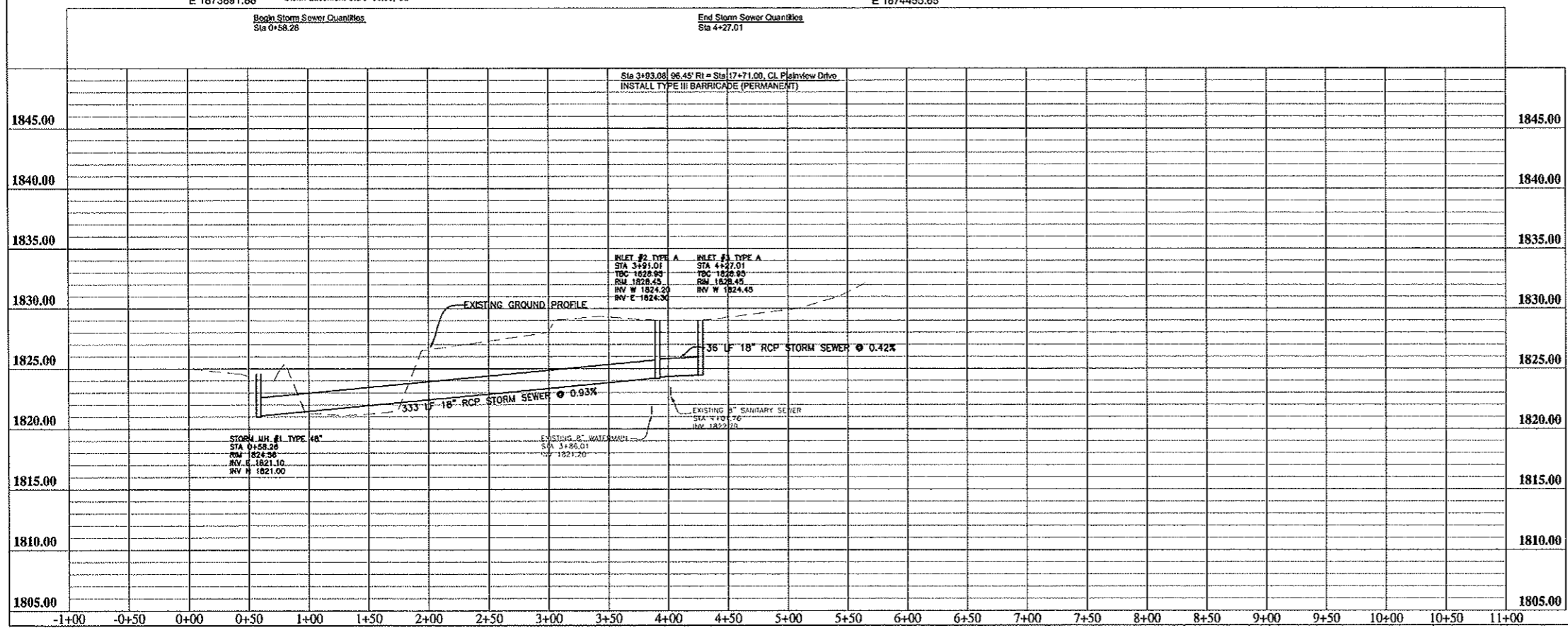
Inlet Number	2	3
Top of Curb	1828.95	1828.95
Top P.C. Section	1827.95	1827.95
Invert Elev. N	--	--
Invert Elev. E	1824.30	--
Invert Elev. S	--	--
Invert Elev. W	1824.20	1824.45
Length P.C. Section	3.75'	3.50'



BOP 0+00.00  
N 412682.47  
E 1873891.88

Station Equation  
8th Ave SE Sta 35+31.98, 46.00' Rt =  
Storm Easement Sta 0+00.00, CL

EOP 5+64.61  
N 412713.35  
E 1874455.85



**APPROXIMATE QUANTITIES**

Storm Sewer Items	Quantity
Pitrun Gravel	87 Ton
Subcut Gravel	8 Ton
18" RCP Sewer	367 LF
Type A 36" Inlet	2 EA

RECORD  
DRAWING

Rev'd		PLAINVIEW HEIGHTS TENTH ADDITION STREET IMPROVEMENT DISTRICT 2006-01 MARDIAN, NORTH DAKOTA		SHEET NO. <b>8</b>
<b>Kadmas Lee &amp; Jackson</b> Engineers Surveyors Planners		STORMWATER EASEMENT PLAN AND PROFILE		
DATE 04/26/06	BY TK	CHECKED BY TK	COPY NO. 1406104	DATE 04/26/06
© Kadmas, Lee & Jackson, Inc. 2006				