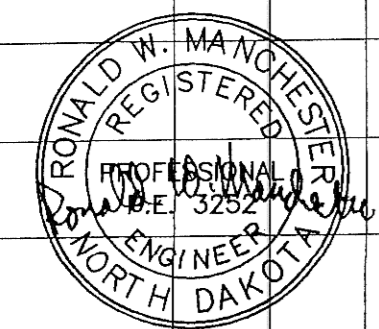
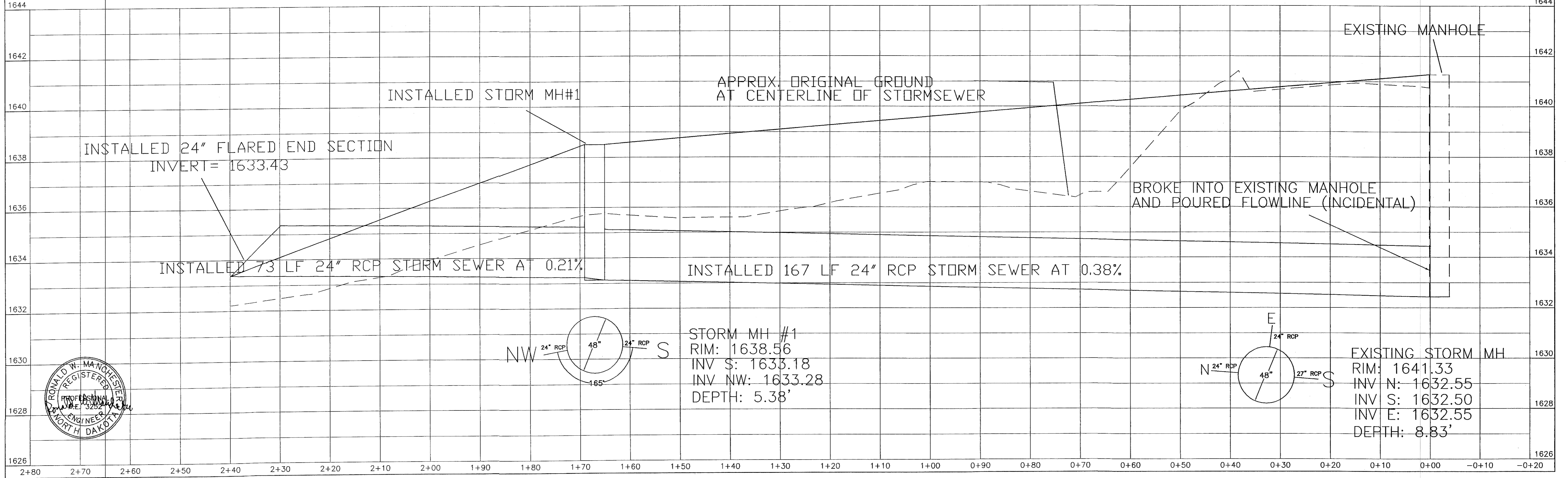
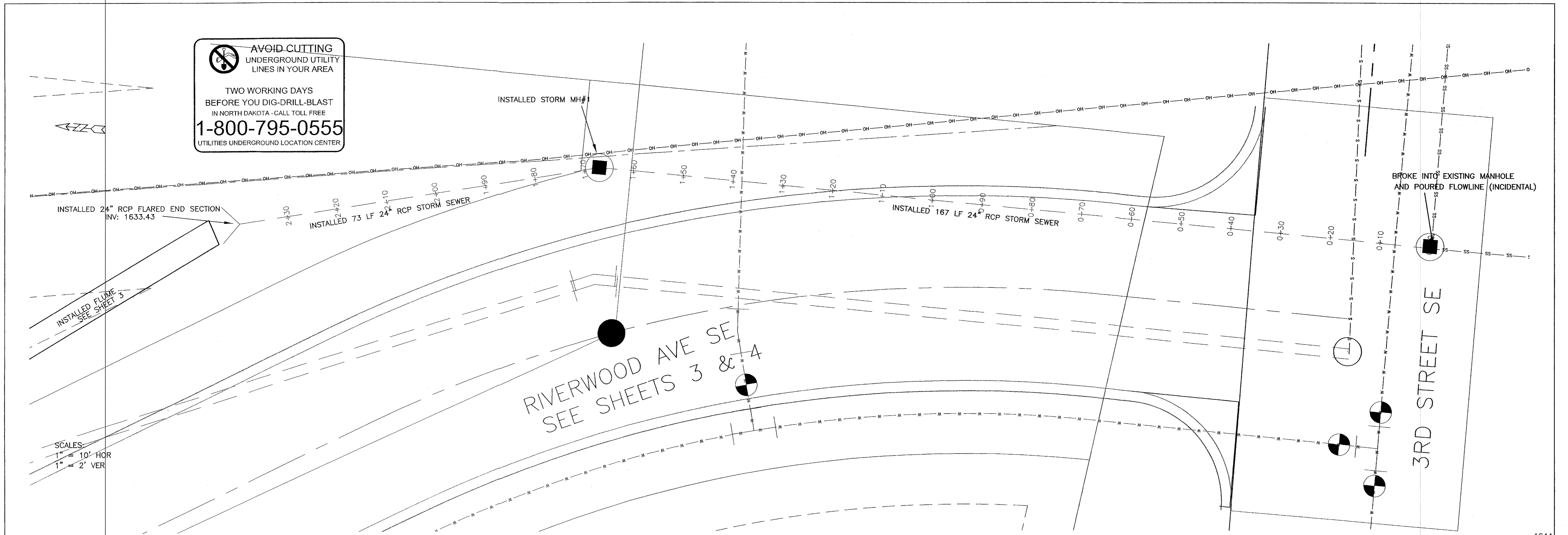


AS-BUILT STORM SEWER PLAN & PROFILE



TOMAN ENGINEERING COMPANY
 CONSULTING CIVIL ENGINEERS
 908 2ND ST. N.W. • MANDAN, NORTH DAKOTA 58554 • 701-663-4463

PROJECT: STREET IMPROVEMENT DIST. #124 AREA "B" RIVERWOOD COMMERCIAL PARK AS-BUILT RIVERWOOD AVE SE PLAN & PROFILE

NO.	REVISIONS	BY	DATE	ISSUED BY	DATE	APPROVED BY	DATE
1	ISSUED	AM	07/15/04				

TITLE: STREET IMPROVEMENT DIST. #124 AREA "B" REVISIONS

SHEET NUMBER 5 OF 7 SHEETS