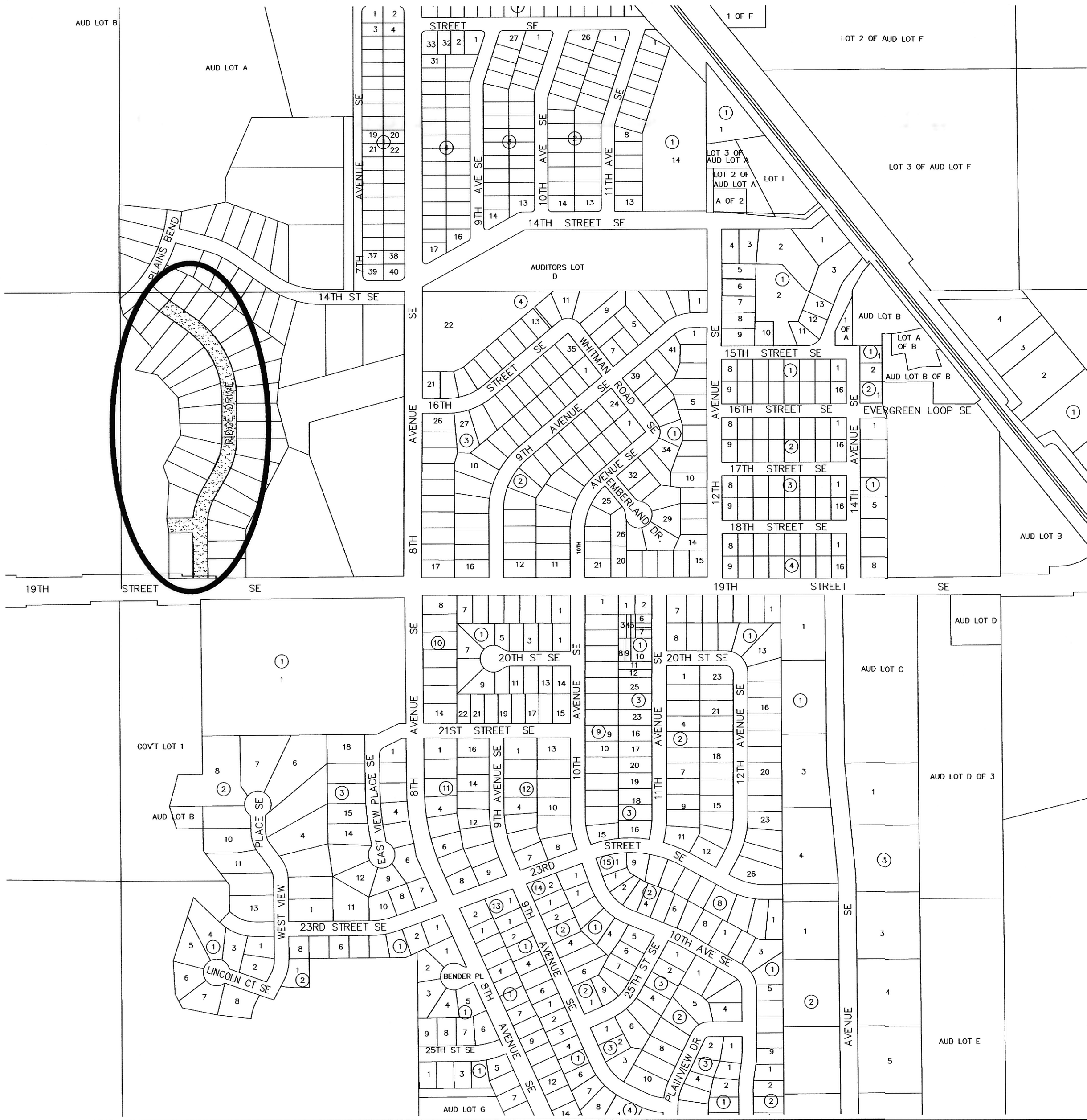


CITY OF MANDAN

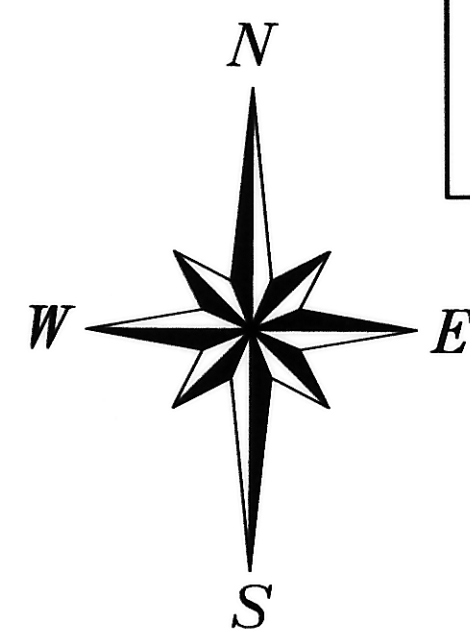


LOCATION MAP

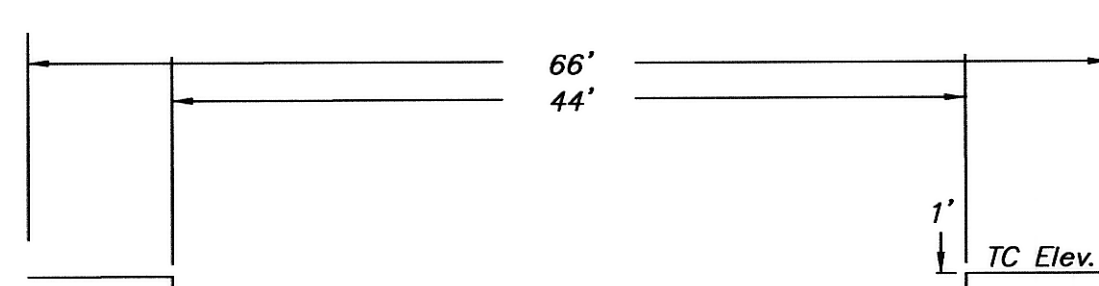
RECORD DRAWING

JANUARY 24, 2013

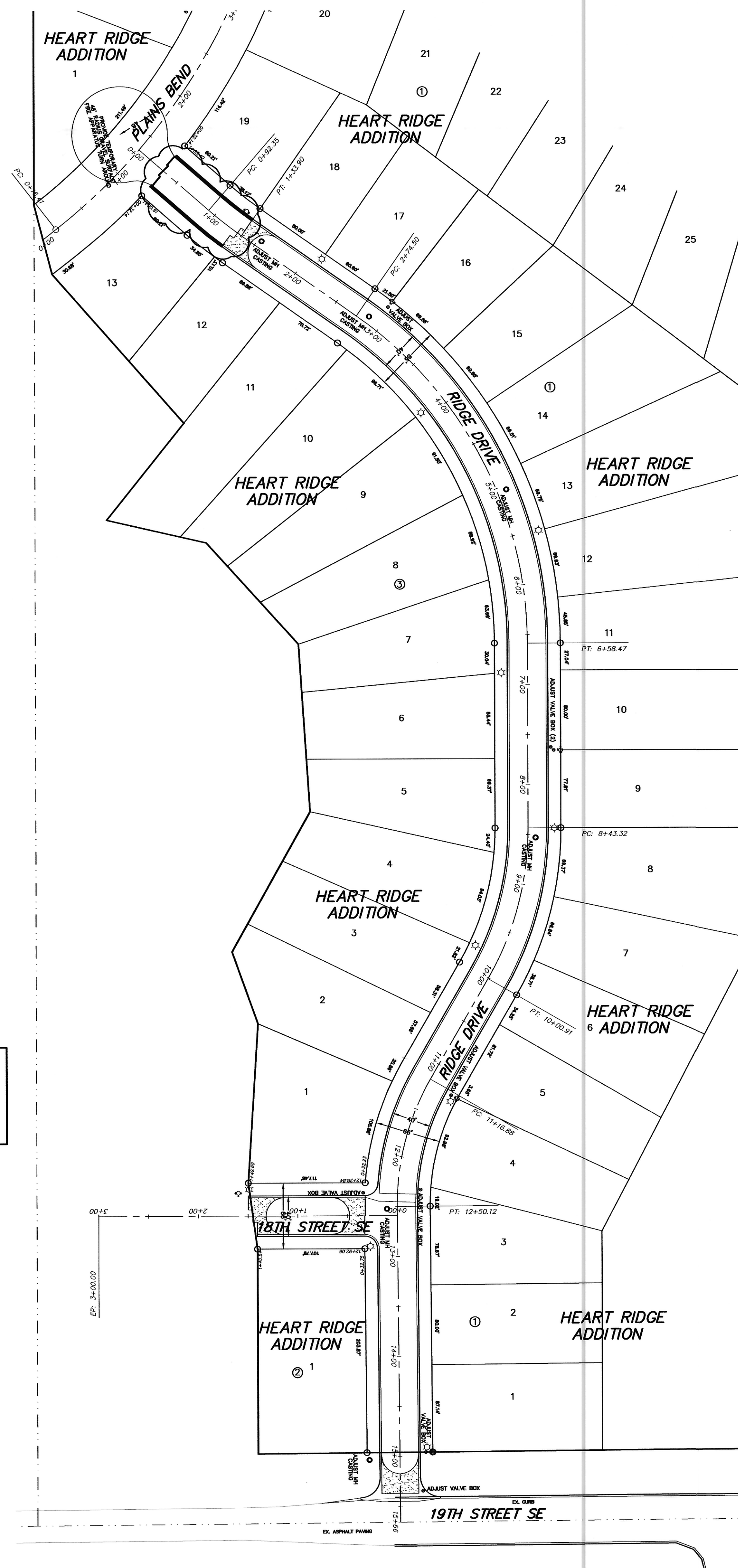
GENERAL CONTRACTOR: NORTHERN IMPROVEMENT CO.



Overall Schematic
NOT FOR CONSTRUCTION



EXISTING 66' ROUGH GRADED SECTION AT TIME OF CONSTRUCTION



CONSTRUCTION PLANS FOR STREET PAVING AND LIGHTING HEART RIDGE ADDITION Mandan, North Dakota

CIVIL ENGINEER'S CERTIFICATE

I, JASON PETRYSZYN, A REGISTERED PROFESSIONAL ENGINEER IN THE STATE OF NORTH DAKOTA, HEREBY CERTIFY THAT THE PLANS FOR WATER & SANITARY SEWER IMPROVEMENT PROJECT NO. 2011-09, MANDAN, NORTH DAKOTA WERE PREPARED UNDER MY SUPERVISION AND ARE COMPLETE AND CORRECT TO THE BEST OF MY KNOWLEDGE AND BELIEF.

JASON PETRYSZYN, P.E.
REGISTERED PROFESSIONAL ENGINEER
NORTH DAKOTA REGISTRATION NO. 5345

ELECTRICAL ENGINEER'S CERTIFICATE

I, JEREMY J. BUTMAN, A REGISTERED PROFESSIONAL ENGINEER IN THE STATE OF NORTH DAKOTA, HEREBY CERTIFY THAT THE ELECTRICAL PLANS FOR STREET PAVING AND LIGHTING PROJECT 2011-09, MANDAN, NORTH DAKOTA WERE PREPARED UNDER MY SUPERVISION AND ARE COMPLETE AND CORRECT TO THE BEST OF MY KNOWLEDGE AND BELIEF.

JEREMY J. BUTMAN, P.E.
REGISTERED PROFESSIONAL ENGINEER
NORTH DAKOTA REGISTRATION NO. 5943

APPROVAL OF CITY ENGINEER

I, DAVID THOMPSON, CITY ENGINEER FOR THE CITY OF MANDAN, NORTH DAKOTA, HEREBY APPROVE THESE PLANS FOR STREET PAVING AND LIGHTING PROJECT NO. 2011-09, MANDAN, NORTH DAKOTA AS SHOWN ON THE ACCOMPANYING PLANS.

DAVID THOMPSON, P.E.
REGISTERED PROFESSIONAL ENGINEER
CITY ENGINEER
MANDAN, NORTH DAKOTA

DESIGN ENGINEER

SWENSON, HAGEN & CO. & PRAIRIE ENGINEERING, P.C.

DEVELOPER

WACHTER DEVELOPMENT

SHEET INDEX

TITLE PAGE
RIDGE DRIVE
18TH STREET SE
ELECTRICAL / LIGHTING
ELECTRICAL / LIGHTING

SHEET 1
SHEET 2
SHEET 3
SHEET 4
SHEET 5

WARRANTY / DISCLAIMER

The designs represented in these plans are in accordance with established practices of civil engineering. However, neither Swenson, Hagen & Co. nor its personnel can or do warranty these plans as constructed except in the specific cases where Swenson, Hagen & Co personnel inspect and control the physical construction on a full time basis.

SAFETY NOTICE TO CONTRACTOR

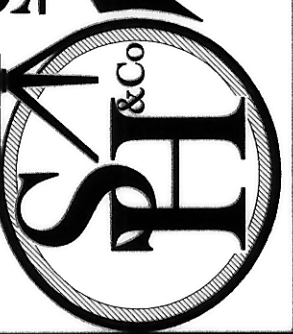
In accordance with generally accepted construction practices the Contractor will be solely and completely responsible for conditions of the job site, including safety of all persons and property during performance of the work. This requirement will apply continuously and not be limited to normal business hours.

UTILITY NOTICE TO CONTRACTOR

The location of existing underground utilities are shown in an approximate way only and have not been independently verified by the Owner or its representatives. The Contractor shall determine the exact location of all existing utilities before commencing work, and agrees to be fully responsible for any and all damages which might be occasioned by the Contractor's failure to exactly locate and preserve any and all underground utilities. Underground locates can be made by using the "One Call" number 1-800-795-0555.

STREET PAVING AND LIGHTING
PROJECT 2011-09
DISTRICT 161 AREA C
HEART RIDGE ADDITION - MANDAN, NORTH DAKOTA

SWENSON, HAGEN & COMPANY P.C.
5909 Basin Avenue
Bismarck, North Dakota 58504
sheng@swensenhagen.com
Phone (701) 223-2600
Fax (701) 223-2606
Surveying
Hydrology
Land Planning
Civil Engineering
Landscape & Site Design
Construction Management



DRAWN BY: CW
CHECK BY: JE
DATE: 1/16/12
FILE DESC:
COMPUTER FILE:
SURVEY FILE:

SHEET
1 OF 5