

SCALE - 1"=50'

BORROW SITE LOCATION (SHAITE VARIETY)

UNPLATTED

DANGER UNDERGROUND GAS & UTILITIES

LAKEWOOD COMMERCIAL PARK 3RD ADDITION

LAKEWOOD COMMERCIAL PARK 3RD ADDITION

CONSTRUCTION NOTES (THIS SHEET)

1. IN BACK THE LAST 30' OF THE STORM SEWER FROM THE OUTLET LEGS CHECK AND PARTICULARLY THE PLANNED ONE SECTION A COVERED DRAIN OR SOLIDIFIED CHANNEL WILL BE INSTALLED. IN THE SECTION OF THE STORM SEWER TO BE EXCAVATED TO CONSTRUCT THE CHANNEL SHALL ALSO BE USED AS BORROW MATERIAL FOR BURNING 40TH AVENUE SE AND 19TH STREET SE.
2. SPREAD 4" OF TOPSOIL ON THE BORROW SITE. SEED AND MULCH.

Sta. 11+19.10
Begin Storm Sewer Quantities

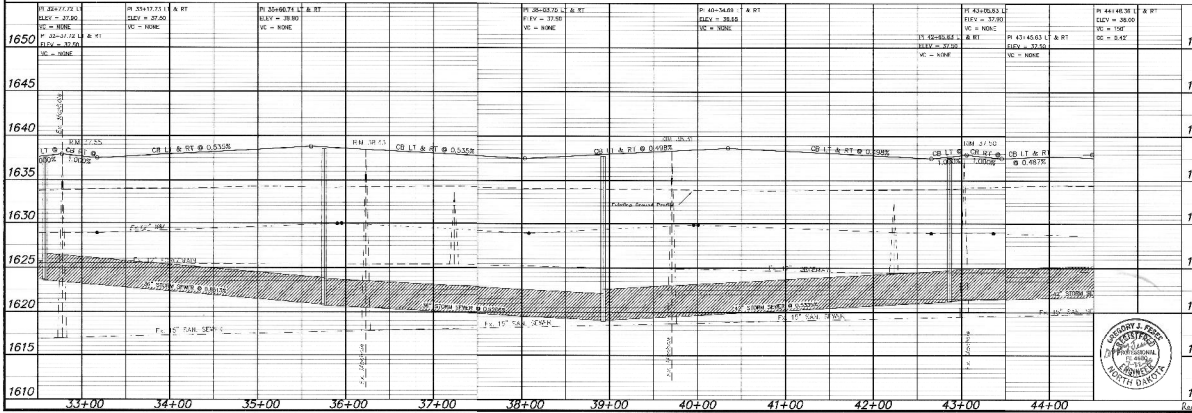
Sta. 11+50.00
Begin Curb & Gutter, Asphalt

STORM SEWER MANHOLE AND INLET SCHEDULE

MANHOLE NO.	MANHOLE SIZE	INVERT (ft)	TOP OF CONCRETE	INVERT (ft)	TOP OF CONCRETE	INVERT (ft)	TOP OF CONCRETE	INVERT (ft)	TOP OF CONCRETE	INVERT (ft)	TOP OF CONCRETE
1	2' x 3'	31.43	36.21	31.43	36.21	31.43	36.21	31.43	36.21	31.43	36.21
2	2' x 3'	31.43	36.21	31.43	36.21	31.43	36.21	31.43	36.21	31.43	36.21
3	2' x 3'	31.43	36.21	31.43	36.21	31.43	36.21	31.43	36.21	31.43	36.21
4	2' x 3'	31.43	36.21	31.43	36.21	31.43	36.21	31.43	36.21	31.43	36.21
5	2' x 3'	31.43	36.21	31.43	36.21	31.43	36.21	31.43	36.21	31.43	36.21
6	2' x 3'	31.43	36.21	31.43	36.21	31.43	36.21	31.43	36.21	31.43	36.21
7	2' x 3'	31.43	36.21	31.43	36.21	31.43	36.21	31.43	36.21	31.43	36.21
8	2' x 3'	31.43	36.21	31.43	36.21	31.43	36.21	31.43	36.21	31.43	36.21
9	2' x 3'	31.43	36.21	31.43	36.21	31.43	36.21	31.43	36.21	31.43	36.21
10	2' x 3'	31.43	36.21	31.43	36.21	31.43	36.21	31.43	36.21	31.43	36.21

Sta. 44+00.00
End Curb & Gutter, Asphalt

Sta. 43+47.00
End Storm Sewer Quantities



APPROXIMATE QUANTITIES

DESCRIPTION	QUANTITY
Excavation and Shoring	20,800 CY
Subgrade Material	42,800 CY
Concrete	1,200 CY
Asphalt	10,000 SF
Storm Sewer	1,000 LF
Manhole	1 EA
Inlet	1 EA
Curb & Gutter	1 EA
Topsoil	1 EA
Seed & Mulch	1 EA

SWENSON, HAGEN & COMPANY P.C.

Professional Engineer
1900 Main Street, Suite 1100
Mandan, ND 58542
701.785.1234

40TH AVENUE
FROM SHOAL LOOP TO 21ST STREET SE

STREET IMPROVEMENT DISTRICT NO. 133
SHEET C3 OF 19 PROJECT 2005-16
1610 MANDAN, ND JULY 22, 2005

Copyright 2005 SWENSON, HAGEN & CO.