

NICOLA'S THIRD ADDITION

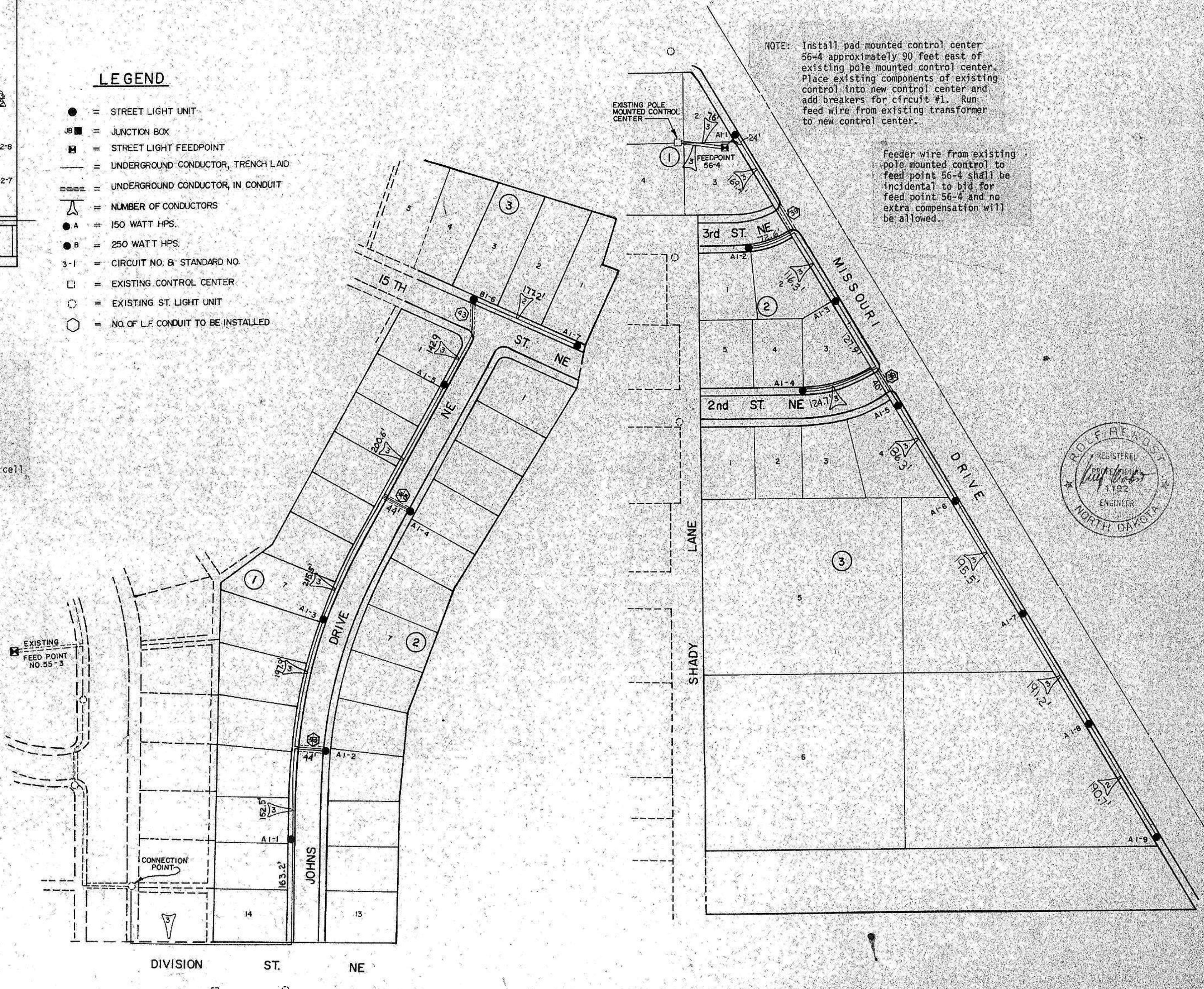
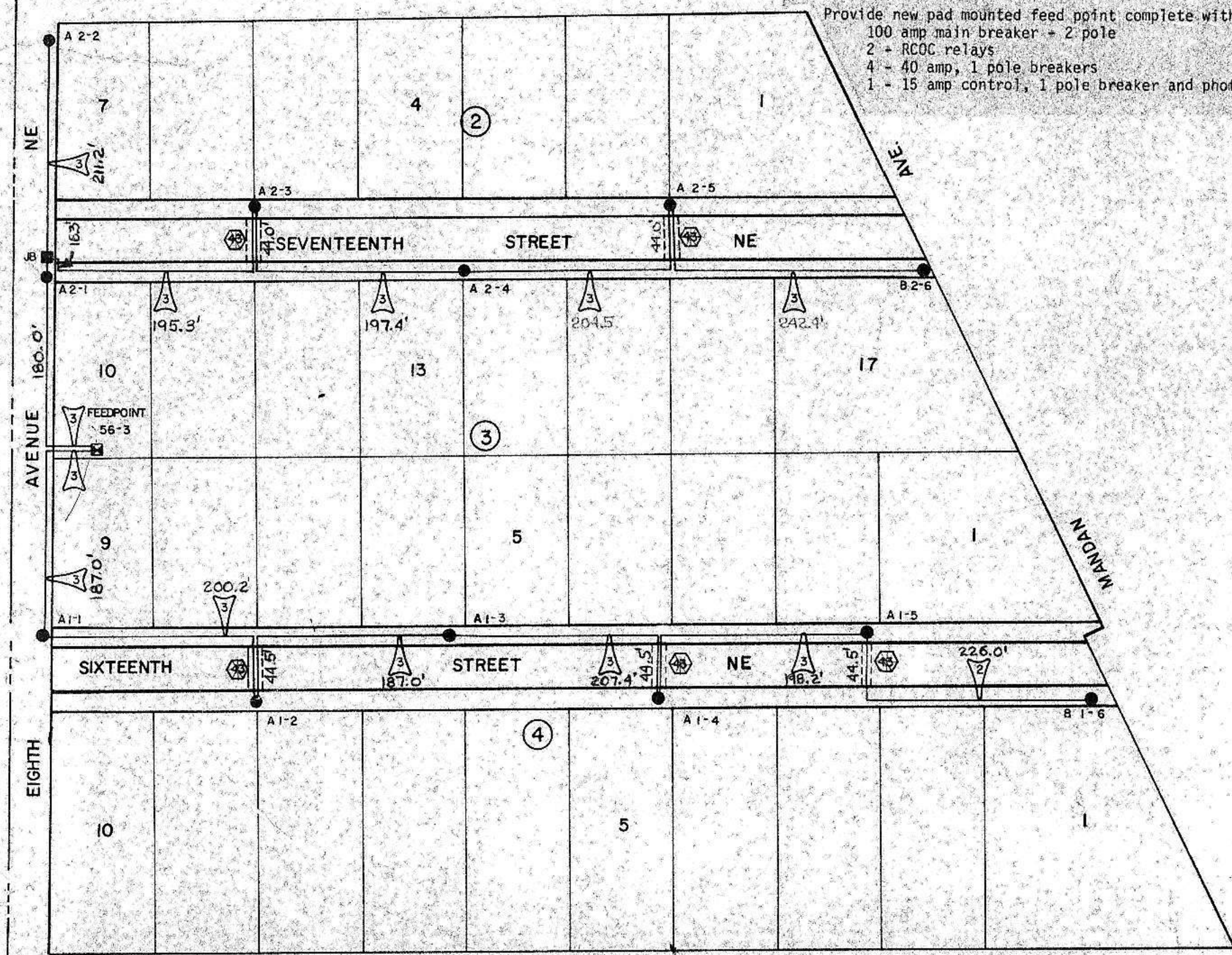
Feed Point F56-2
 Provide new pad mounted feed point complete with:
 100 amp main breaker - 2 pole
 2 - RCOC relays
 4 - 40 amp, 1 pole breakers
 1 - 15 amp control, 1 pole breaker and photo cell

LEGEND

- = STREET LIGHT UNIT
- = JUNCTION BOX
- = STREET LIGHT FEEDPOINT
- = UNDERGROUND CONDUCTOR, TRENCH LAID
- = UNDERGROUND CONDUCTOR, IN CONDUIT
- = NUMBER OF CONDUCTORS
- A = 150 WATT HPS.
- B = 250 WATT HPS.
- 3-1 = CIRCUIT NO. & STANDARD NO.
- = EXISTING CONTROL CENTER
- = EXISTING ST. LIGHT UNIT
- = NO. OF L.F. CONDUIT TO BE INSTALLED

DENLISON'S INDUSTRIAL PARK

Feed Point F56-3
 Provide new pad mounted feed point complete with:
 100 amp main breaker - 2 pole
 2 - RCOC relays
 4 - 40 amp, 1 pole breakers
 1 - 15 amp control, 1 pole breaker and photo cell



NOTE: Install pad mounted control center 56-4 approximately 90 feet east of existing pole mounted control center. Place existing components of existing control into new control center and add breakers for circuit #1. Run feed wire from existing transformer to new control center.

Feeder wire from existing pole mounted control to feed point 56-4 shall be incidental to bid for feed point 56-4 and no extra compensation will be allowed.

