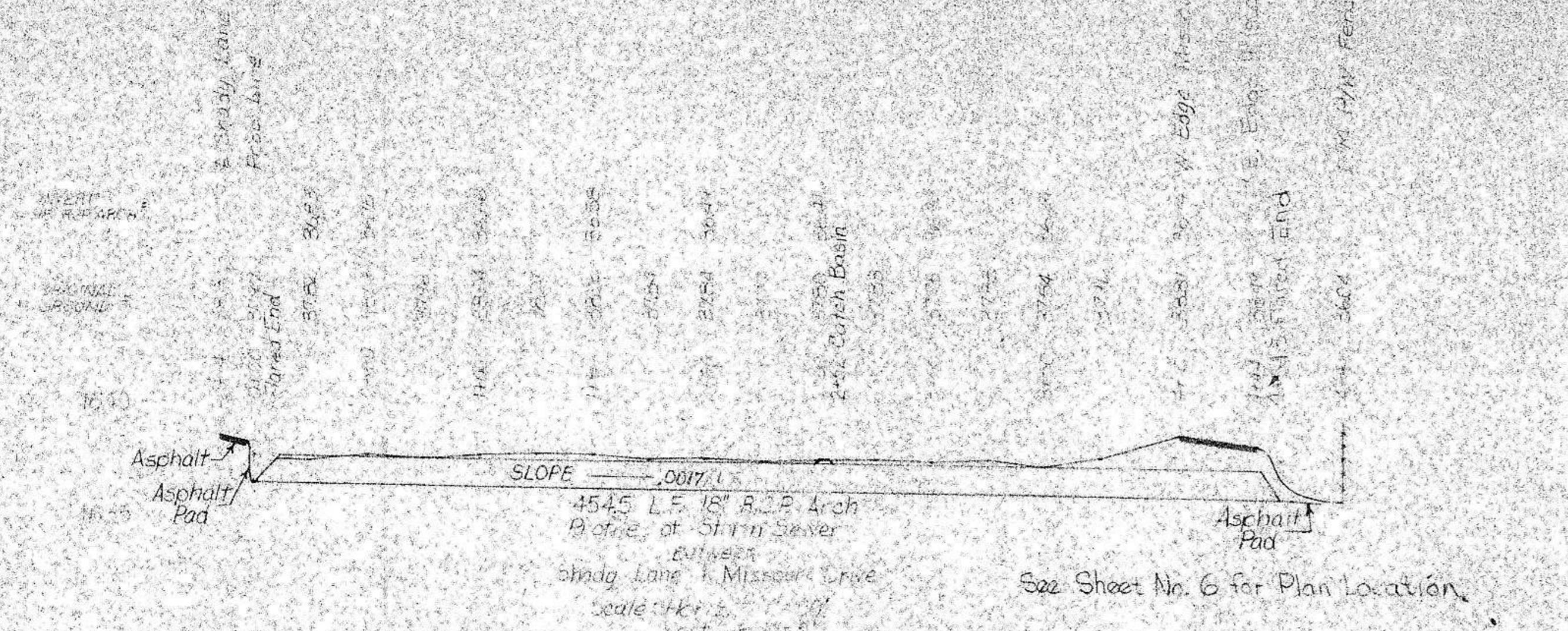
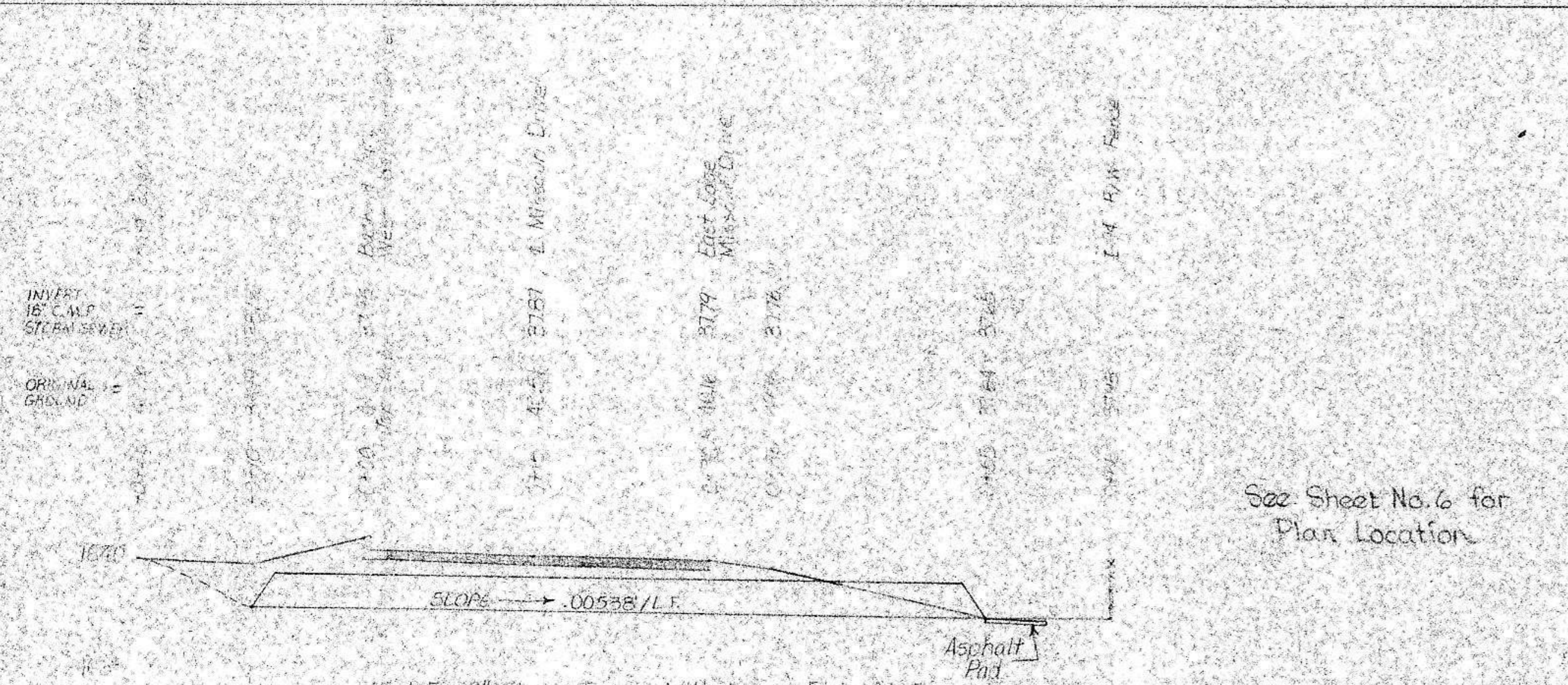


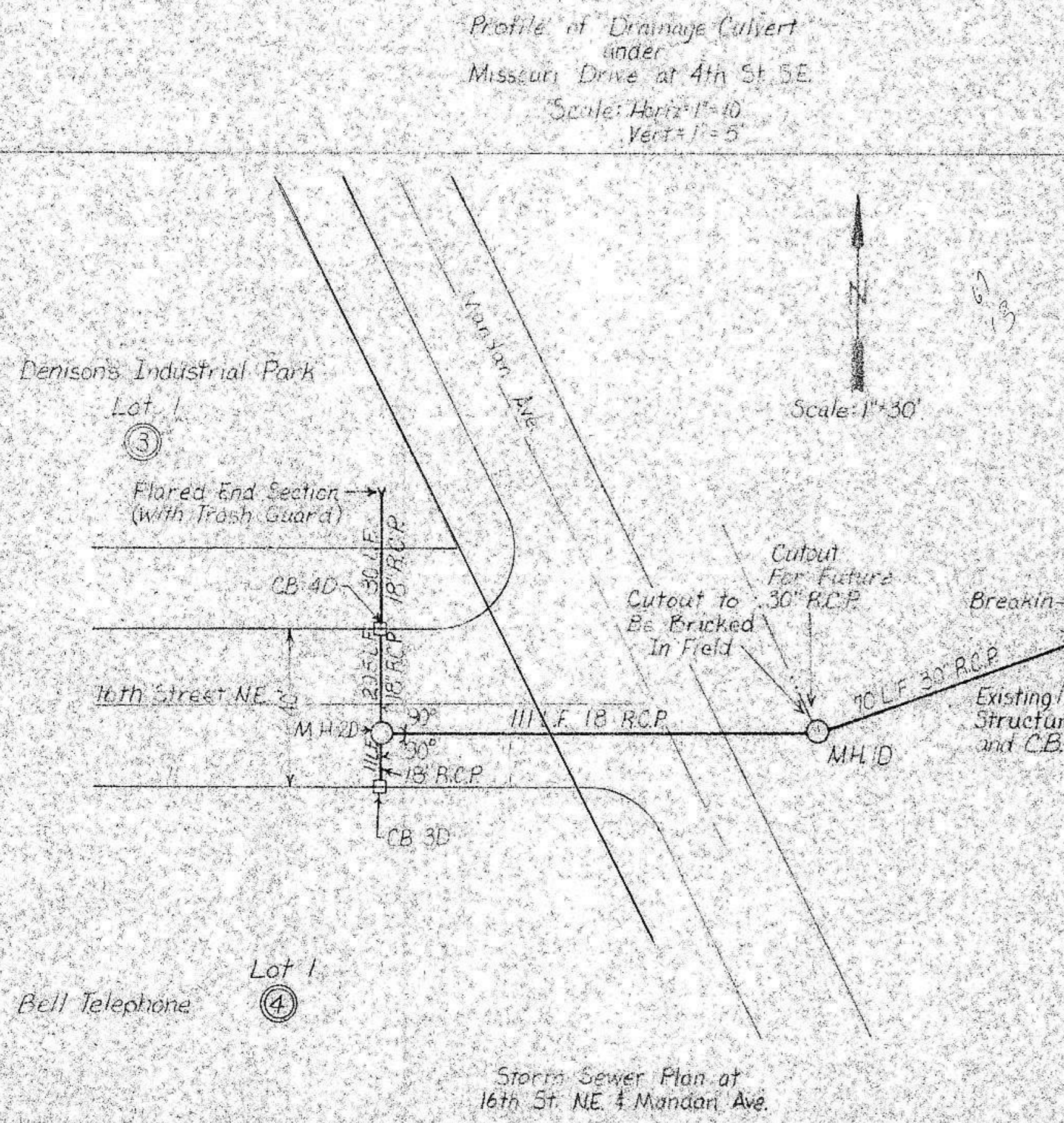
Change Order No.
Installed Week Ending November 15, 1980



See Sheet No. 6 for Plan Location



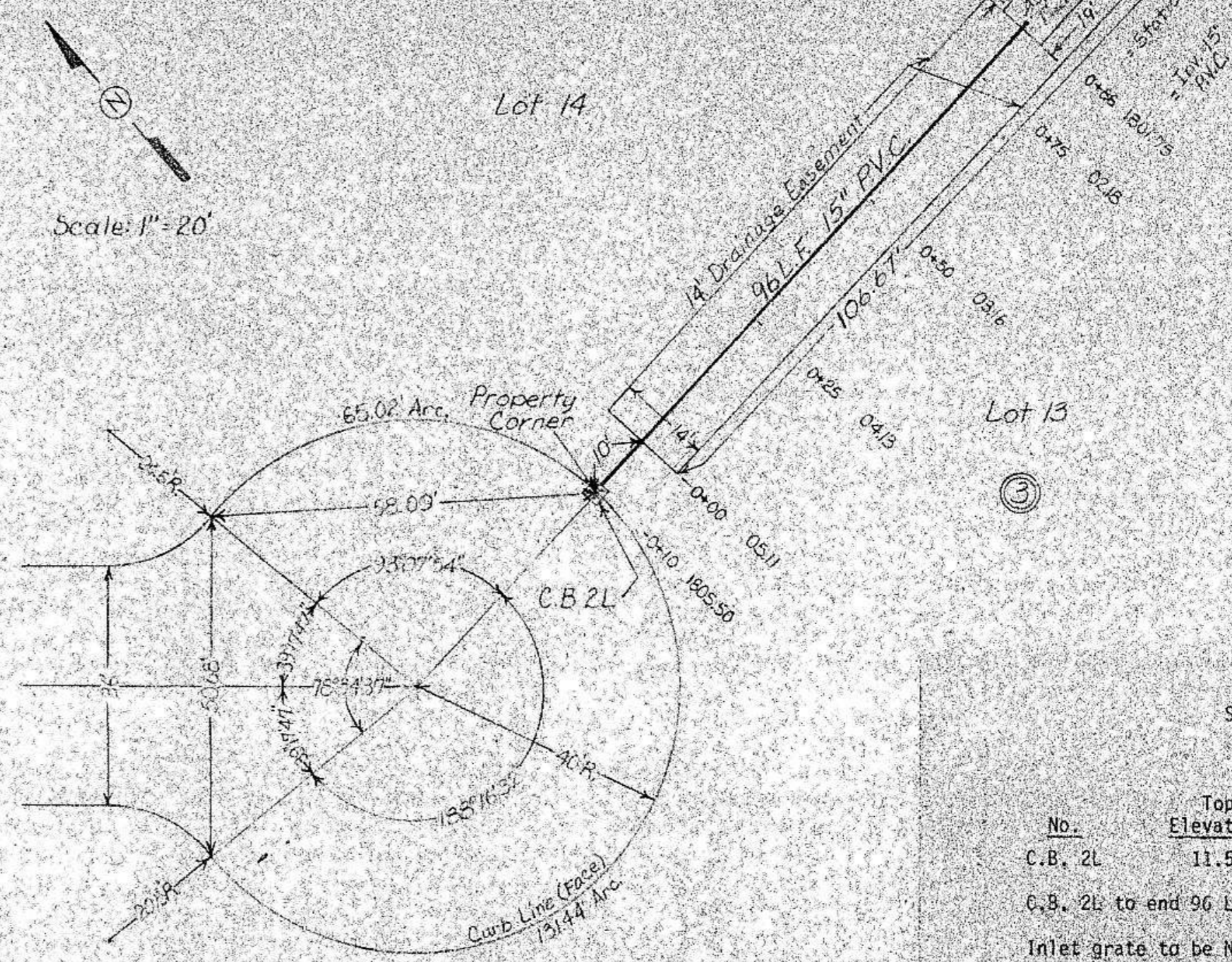
See Sheet No. 6 for Plan Location



Storm Sewer Plan at
16th St. NE & Mandan Ave.

STREET IMPROVEMENT DISTRICT NO. 56
MANDAN, NORTH DAKOTA

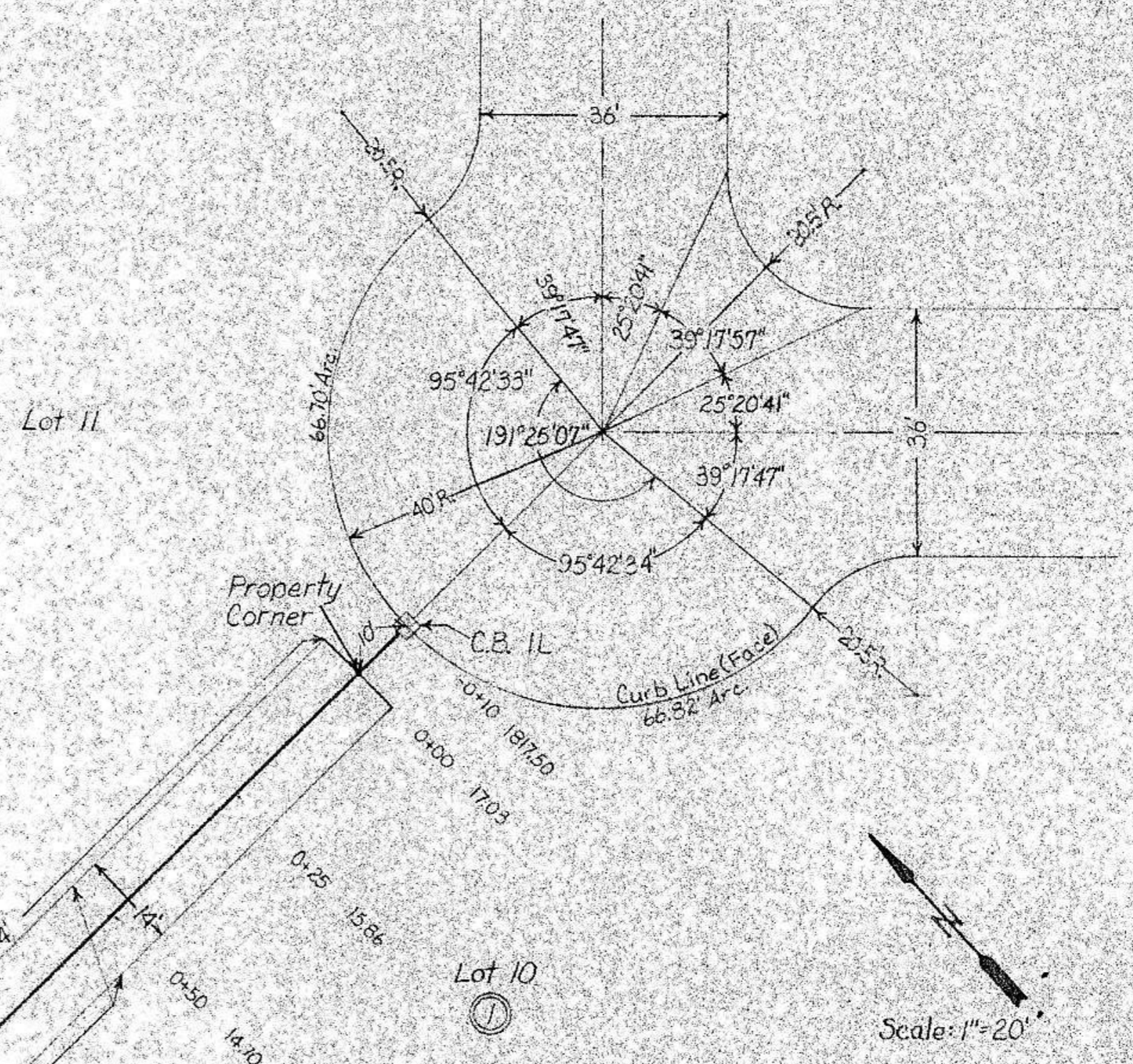
MANHOLE NO.	TOP	INVERT	SIZE	MANHOLE DIAMETER
Existing Structure	92.21	83.25		
1D	96.00	83.53 East	30" East	66" + Type Two Cover + Casting
		85.55 West	18" West	
		89.63 North	30" North	(for future)
2D	98.30	92.00	18" East	42" + Type Two Cover + Casting
		92.25	18" South	
		92.25	18" North	
3D C.B.	98.55	92.91	18" North	30" + Inlet & Grate
4D C.B.	98.45	94.32 South	18" South	30" + Inlet & Grate
		94.32 North	18" North	
Flared End	96.00			
MANHOLE	L.F.	TYPE	SIZE	SLOPE
Existing Structure to 1D	70.0	R.C.P.	30"	.004/ft.
1D to 2D	110.0	R.C.P.	18"	.06/ft.
2D to 3D	11.0	R.C.P.	18"	.06/ft.
2D to 4D	29.5	R.C.P.	18"	.06/ft.
4D North to End (flared)	30.0	R.C.P.	18"	.056/ft.
(including flared end)				



Drainage Pipe Plan
at
Lincoln Place
Lohstreters 2nd Addition
Change Order No.

STREET IMPROVEMENT DISTRICT NO. 56
LINCOLN PLACE

No.	Top Elevation	Invert	Size	Barrel Diameter
C.B. 2L	11.50	05.5	15" East	30" & Inlet Grate
C.B. 2L to end 96 L.F. 15" P.V.C. Slope .03866/ft.				
Inlet grate to be Neenah R-3010DR, casting and grate or approved equal.				



Drainage Pipe Plan
at
NW Corner Union Loop
Lohstreters 2nd Addition
Change Order No.

STREET IMPROVEMENT DISTRICT NO. 56
NW CORNER UNION LOOP

No.	Top Elevation	Invert	Size	Barrel Diameter
C.B. 1L	23.08	17.50	15" West	30" & Inlet Grate
C.B. 1L to end 150 L.F. 15" P.V.C. Slope .0466/ft.				
Inlet grates to be Neenah R-3010DR, casting and grates or approved equal.				