

STREET IMPROVEMENT DISTRICT NO. 58

REPLAT OF PART OF PLAINVIEW HEIGHTS FIRST ADDITION

SECTION 2, T. 138 N. R. 81 W.

Lot 1-15, 21, 22 Block 3, Block 4, Block 5, Block 6, Block 7 and Lot 10 Block 8 of Plainview Heights,

First Addition To The City Of
MANDAN, NORTH DAKOTA

APPROVAL OF CITY ENGINEER

I, THOMAS R. LITTLE, CITY ENGINEER FOR THE CITY OF MANDAN, NORTH DAKOTA, HEREBY APPROVE THE STREET IMPROVEMENT PLANS FOR STREET IMPROVEMENT DISTRICT NO. 58 AS SHOWN ON THE ACCOMPANYING PLANS.

Thomas R. Little
THOMAS R. LITTLE, P. E.
CITY ENGINEER-MANDAN, ND

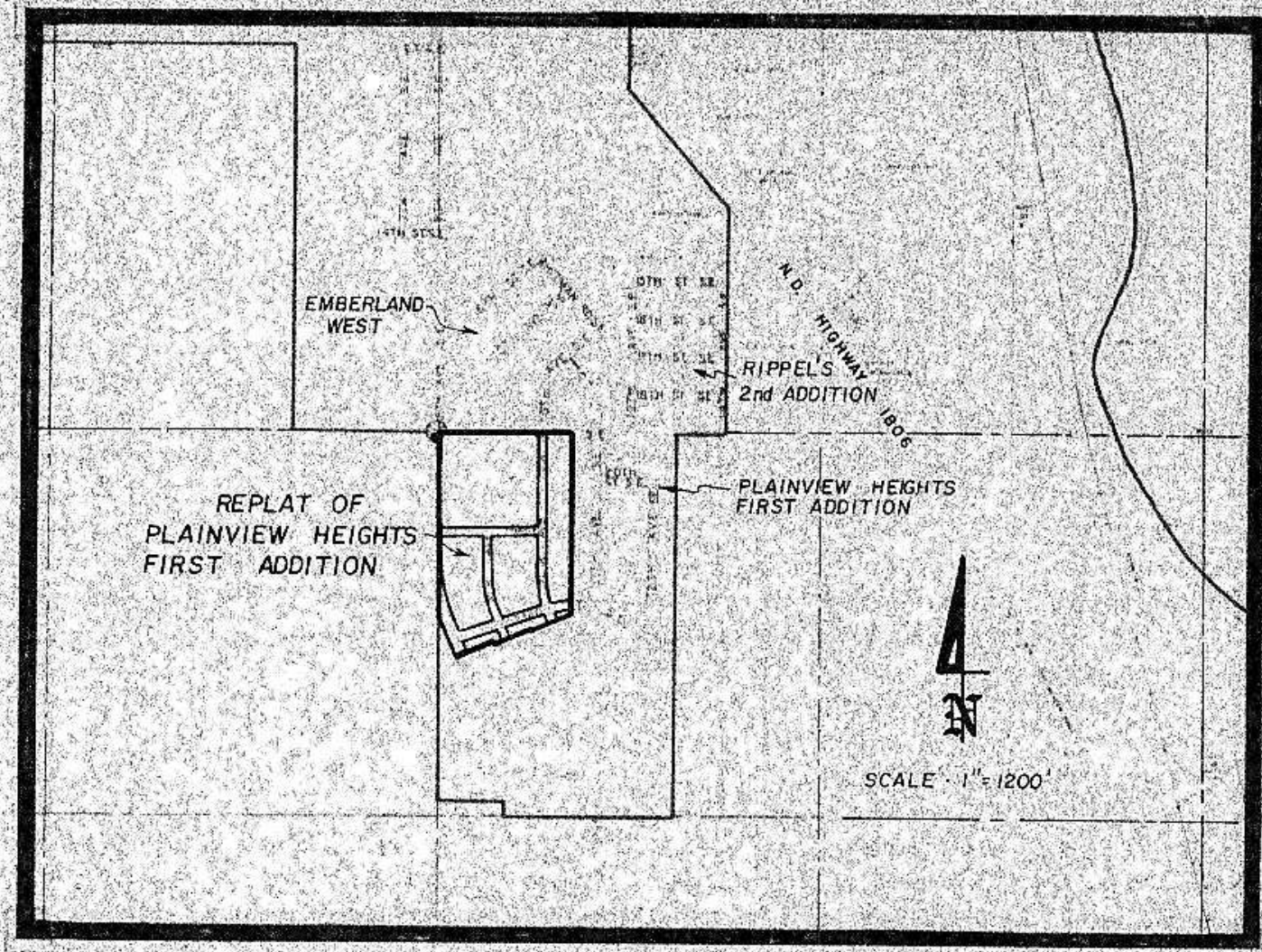
ENGINEER'S CERTIFICATE

I, LONNIE K. ROMSAAS, A REGISTERED PROFESSIONAL ENGINEER, HEREBY CERTIFY THAT THE PLANS FOR STREET IMPROVEMENT DISTRICT NO. 58 TO THE CITY OF MANDAN, NORTH DAKOTA WERE PREPARED UNDER MY SUPERVISION AND ARE COMPLETE AND CORRECT TO THE BEST OF MY KNOWLEDGE AND BELIEF.



Lonnie K. Romsaas
LONNIE K. ROMSAAS
REG. PROF. ENGINEER
N. D. REG. NO. 1983

LOCATION MAP



INDEX

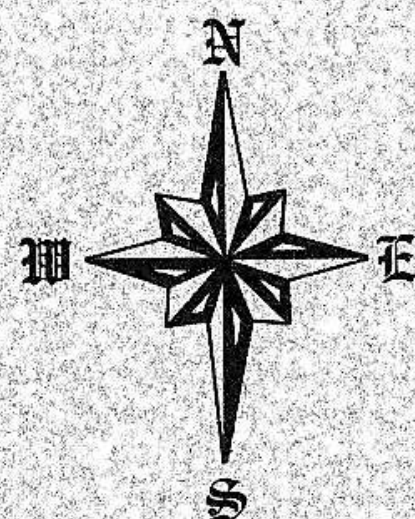
1 of 6	COVER SHEET
2 of 6	8th AVENUE S.E. STA 0+38.62 TO STA 13+05.41
3 of 6	8th AVENUE S.E. STA 13+05.41 TO STA 15+85.82 23rd STREET S.E. STA 0+36.37 TO STA 9+00
4 of 6	21st STREET S.E. STA 0+38.68 TO STA 6+97.54
5 of 6	9th AVENUE S.E. STA 0+33 TO STA 8+02.75
6 of 6	10th AVENUE S.E. STA 0+39 TO STA 13+22.74

AS BUILT

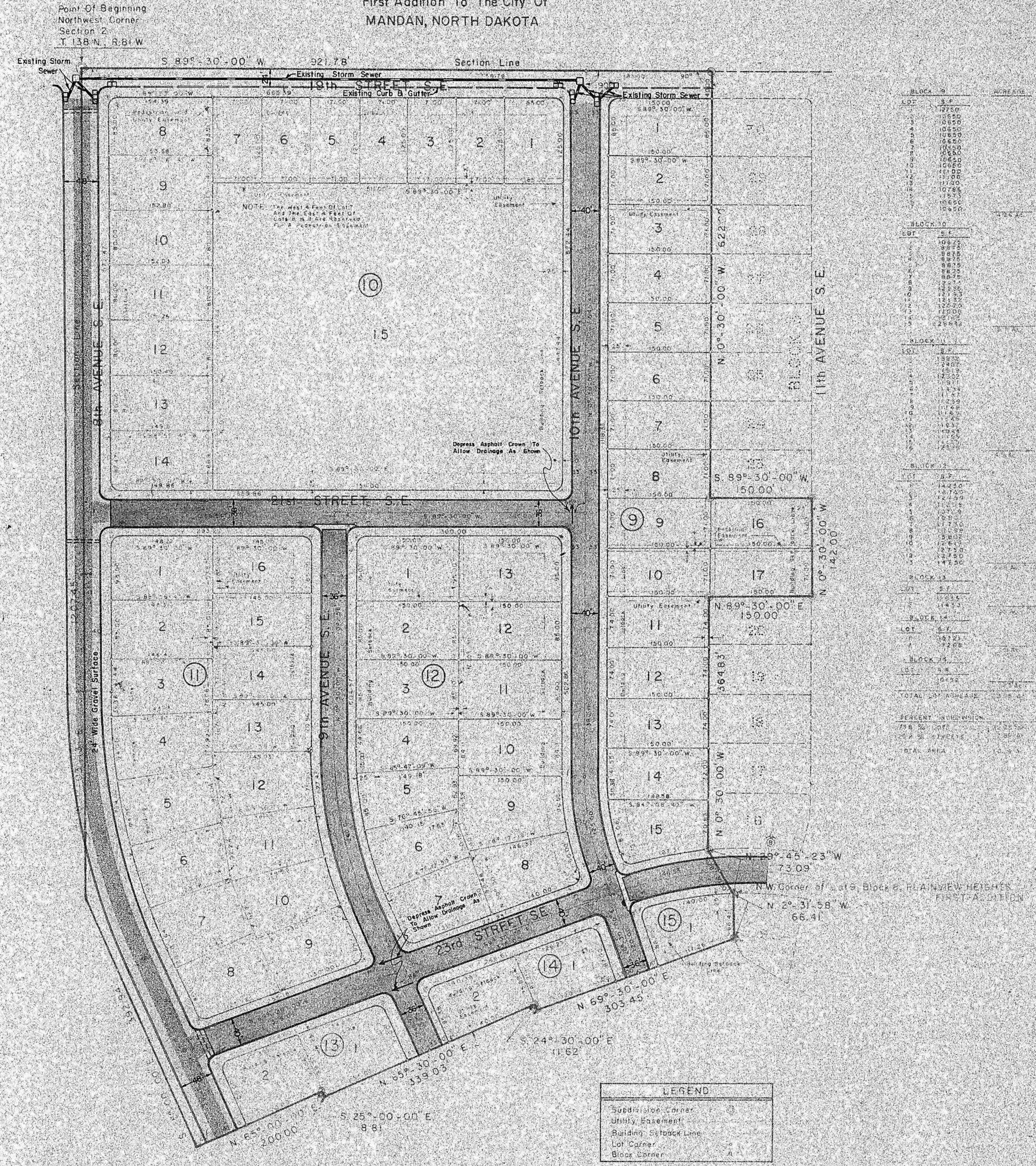
CIVIL ENGINEERING LAND PLANNING LAND SURVEYING

SWENSON, HAGEN & CO. P.C.
Consulting Engineers

PO BOX 1135, 909 BASIN AVENUE
BISMARCK, NORTH DAKOTA 58501
701-223-2800



SCALE 1" = 100'
DATE MAY 1979
0 50 100 200 300



Curve	A	D	T	L	R	(Ext)
A	21° 56' 47"	5° 00' 00"	202.60'	399.11'	955.37'	21.25'
B	48° 30' 00"	11° 00' 00"	235.00'	440.91'	521.67'	50.49'
F	20° 00' 00"	16° 00' 00"	63.35'	125.00'	359.26'	5.54'
G	24° 00' 00"	10° 00' 00"	121.34'	240.00'	573.69'	12.82'

AS BUILT 2

D 58