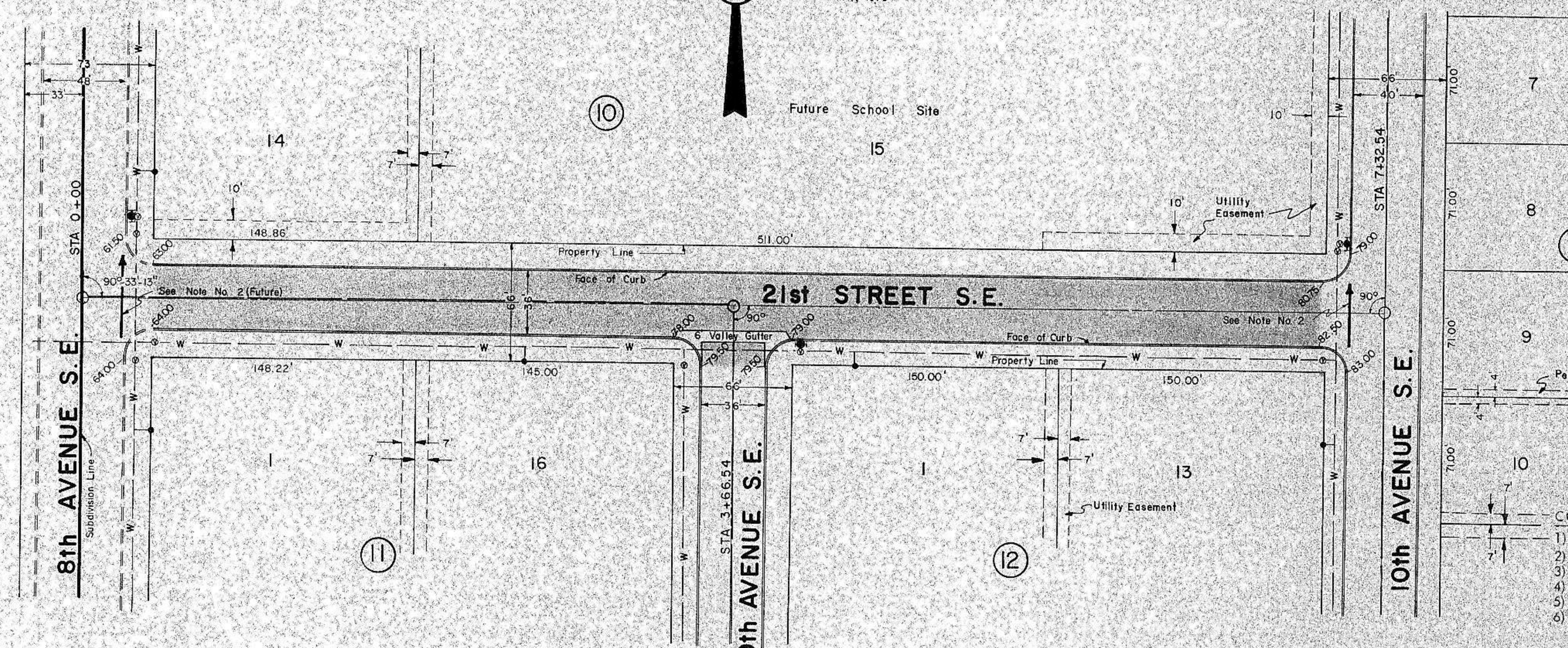
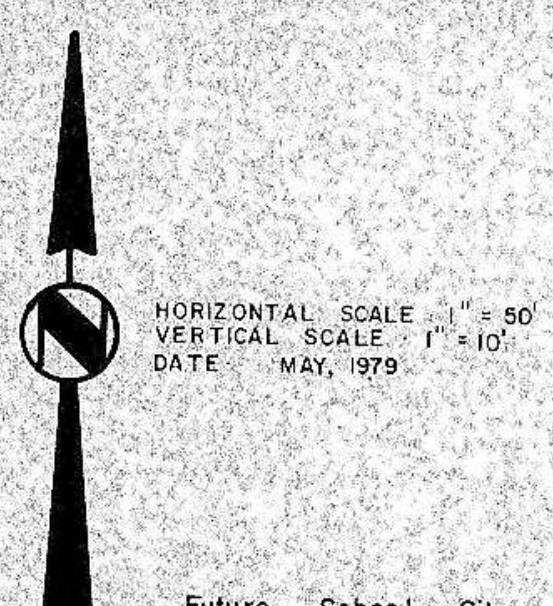


BEGIN QUANTITIES
STA 0+38.68

END QUANTITIES
STA 6+97.54



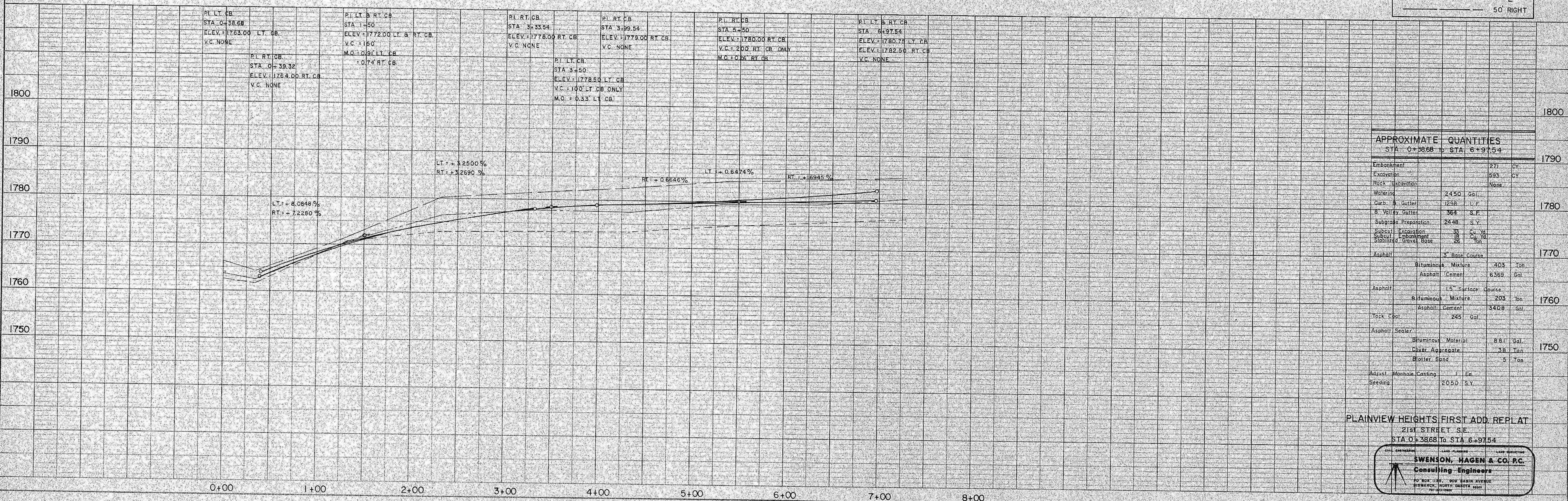
- CONSTRUCTION NOTES:**
- 1) Preliminary street grading has been done by others.
 - 2) Depress crown and tip gutter section to allow drainage as shown.
 - 3) All dimensions shown are to face of curb unless otherwise stated.
 - 4) All radii at intersections shall be 15' to face of curb unless otherwise stated.
 - 5) All elevations shown are to top of curb unless otherwise stated.
 - 6) Sewer and Water Improvements shall be completed prior to curb and gutter and asphalt construction. The contractors shall be responsible for the preservation of these improvements and other existing utilities.
 - 7) All street right-of-way shall be seeded to grass from the edge of the street or road bed to the property line.
 - 8) Class IV seeding shall be required.
 - 9) A 16-20-0 fertilizer spread at the rate of 3 pounds per 100 square yards shall be used prior to seeding.

LEGEND	
(Existing)	SAN. SEWERMAIN
W	WATERMAIN
○	SAN. SEWER M.H.
⊕	HYDRANT
⊕	GATE VALVE
⊕	CURB STOP & BOX

LEGEND	
(Existing)	50' LEFT
⊕	50' RIGHT

PLAN
NOTE BOOK
ALIGNMENT SHEET
RT OF WAY CHECKS

PROFILE
NOTE BOOK
% GRADES
VERTICAL CURVES



APPROXIMATE QUANTITIES		
STA 0+38.68 to STA 6+97.54		
Embankment	271	CY
Excavation	593	CY
Rock Excavation	None	
Waterline	2450	Gal.
Curb & Gutter	1298	L.F.
B. Valley Gutter	364	S.F.
Subgrade Preparation	2448	S.Y.
Subcut Excavation	35	Cu. Yd.
Subcut Embankment	18	Cu. Yd.
Stabilized Gravel Base	28	Sq. Yd.
Asphalt	5	Base Course
Bituminous Mixture	303	Ton
Asphalt Cement	6369	Gal.
Asphalt	15"	Surface Course
Bituminous Mixture	203	Ton
Asphalt Cement	3408	Gal.
Truck Coal	245	Gal.
Asphalt Sealer		
Bituminous Material	881	Gal.
Cover Aggregate	38	Ton
Boiler Spind	5	Ton
Adjust Manhole Casting	1	En.
Seeding	2050	S.Y.

PLAINVIEW HEIGHTS FIRST ADD. REPLAT
21st STREET S.E.
STA 0+38.68 to STA 6+97.54

SWENSON, HAGEN & CO. P.C.
Consulting Engineers
PO BOX 1182 - 505 MAIN AVENUE
MENDOTA, IOWA DAKOTA 50551
712-313-1800