

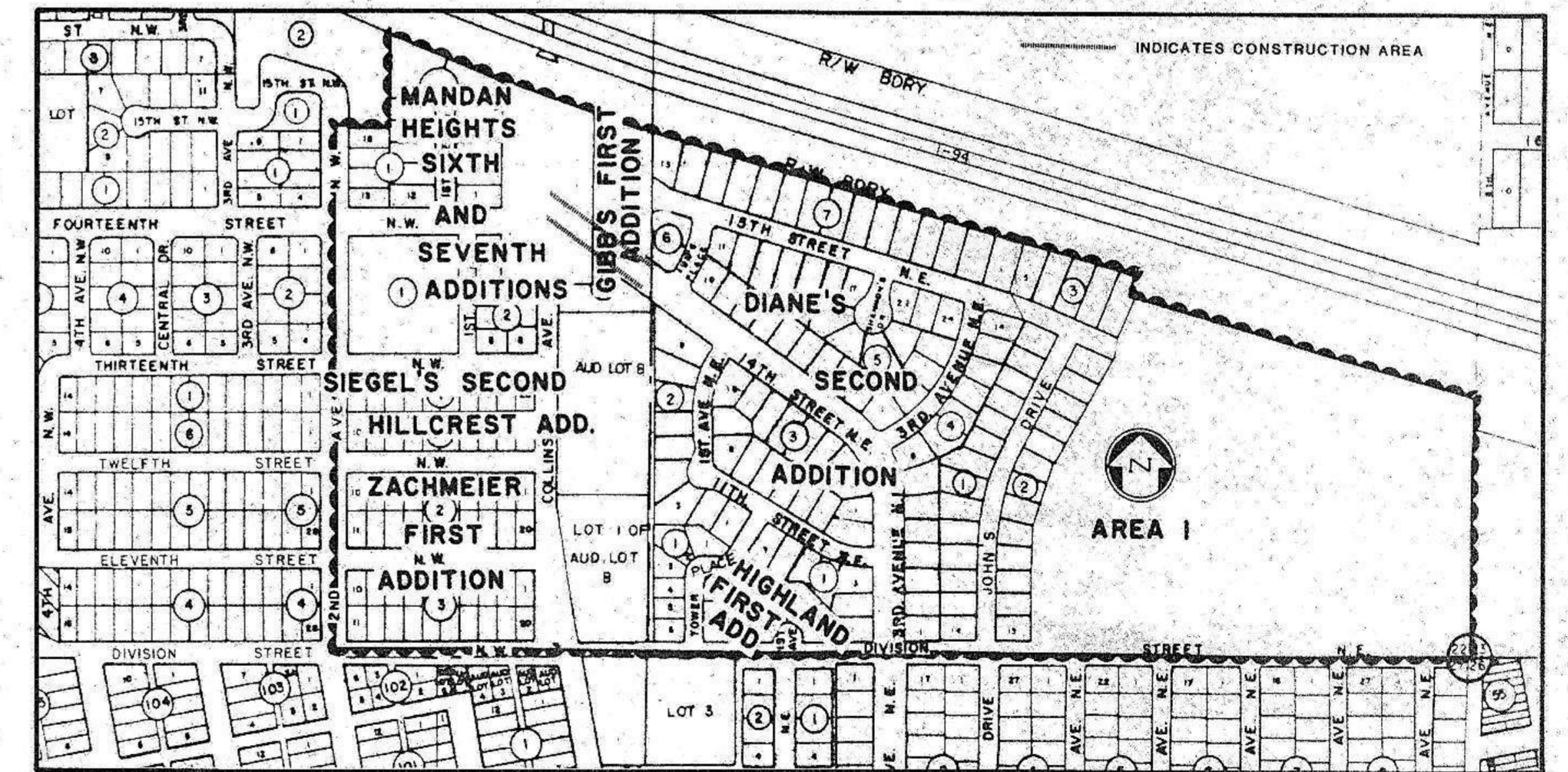
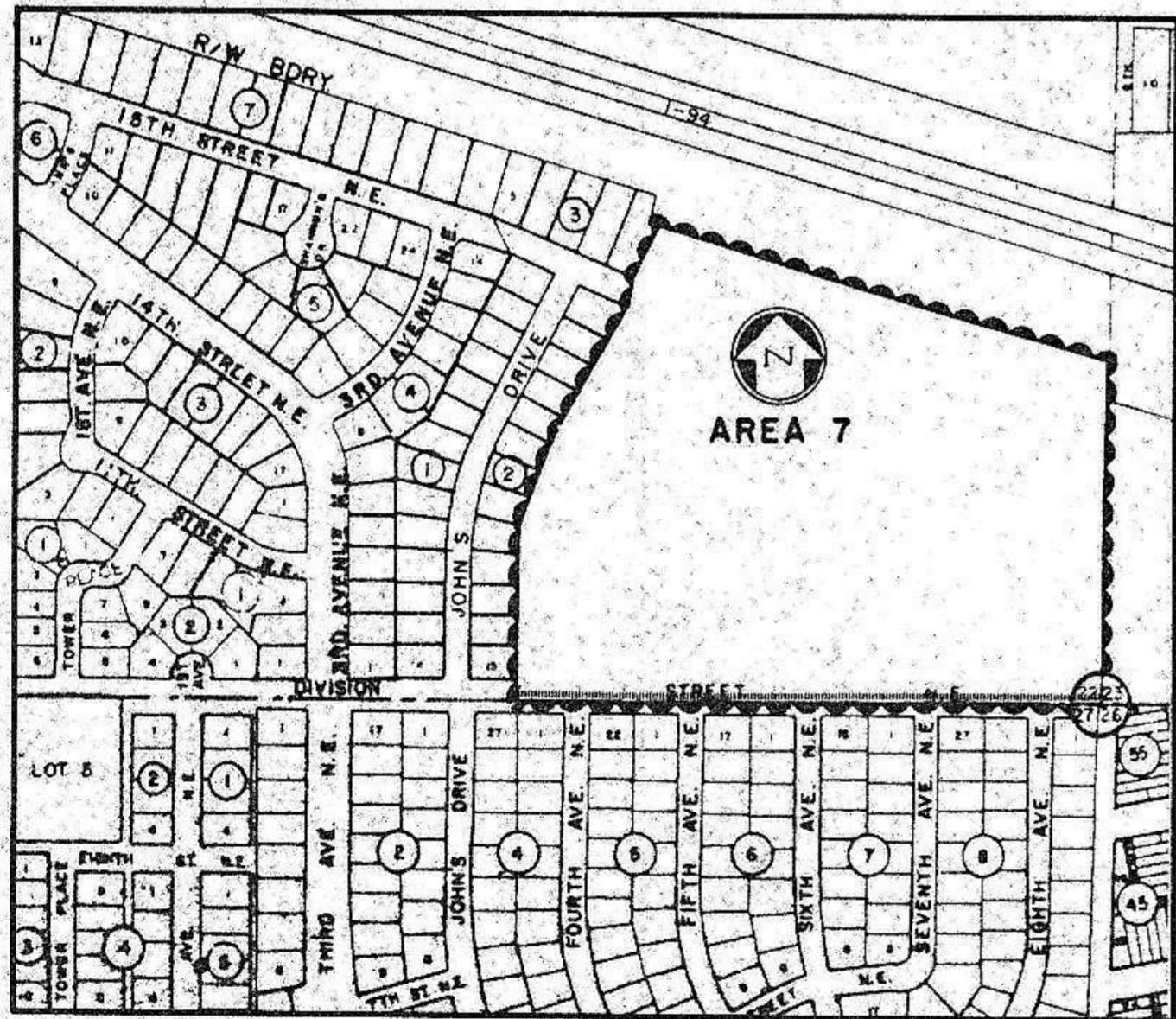
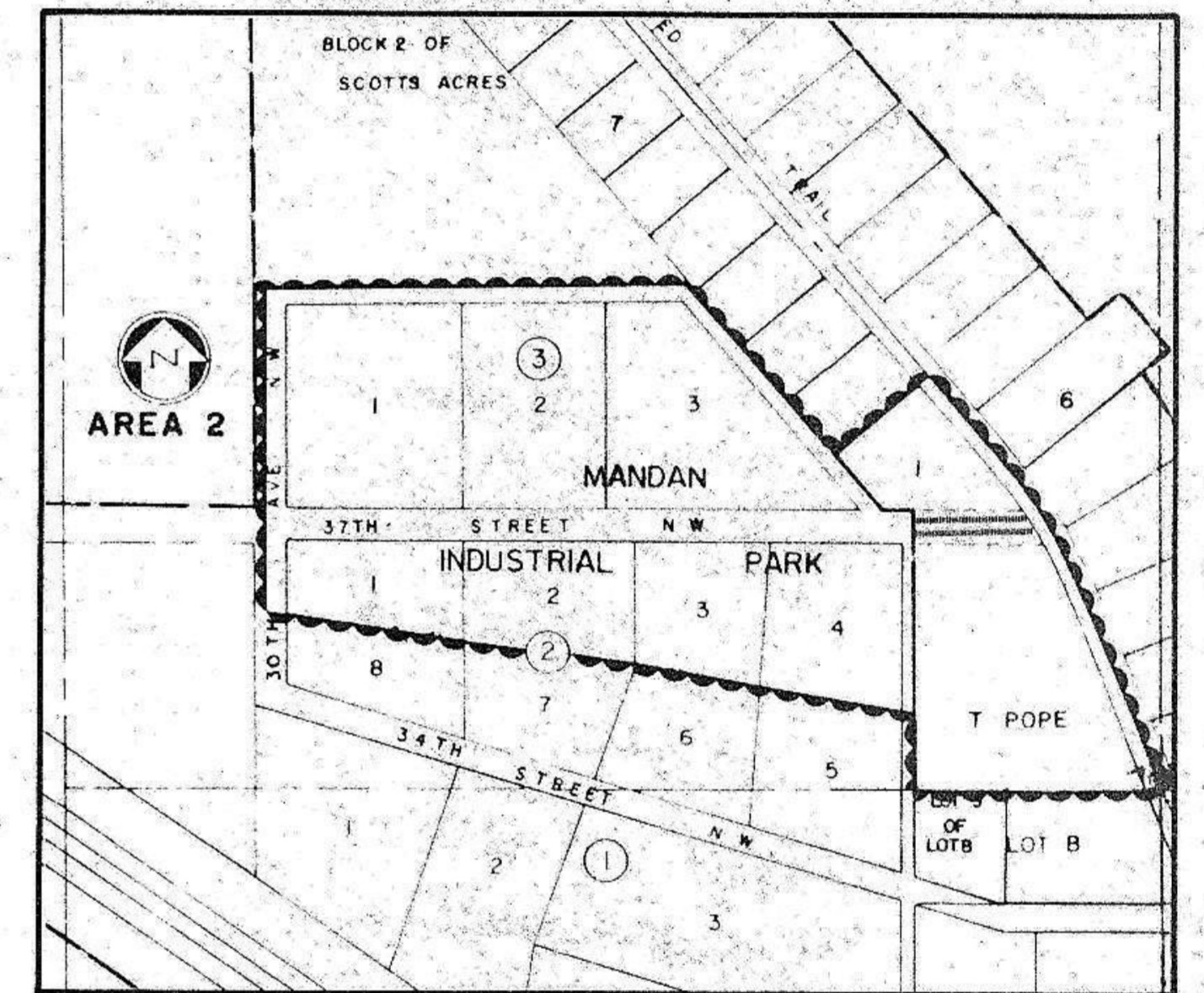
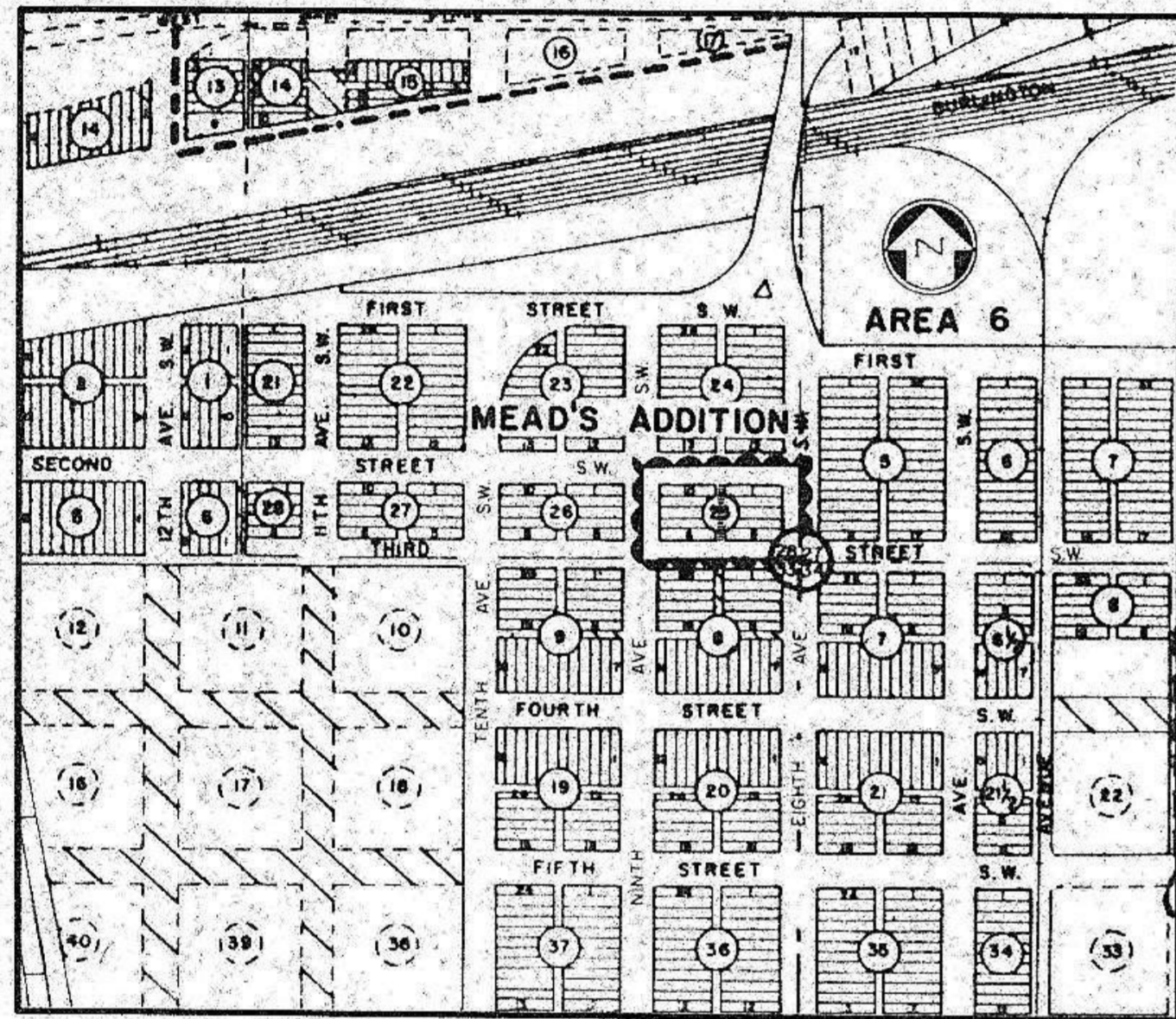
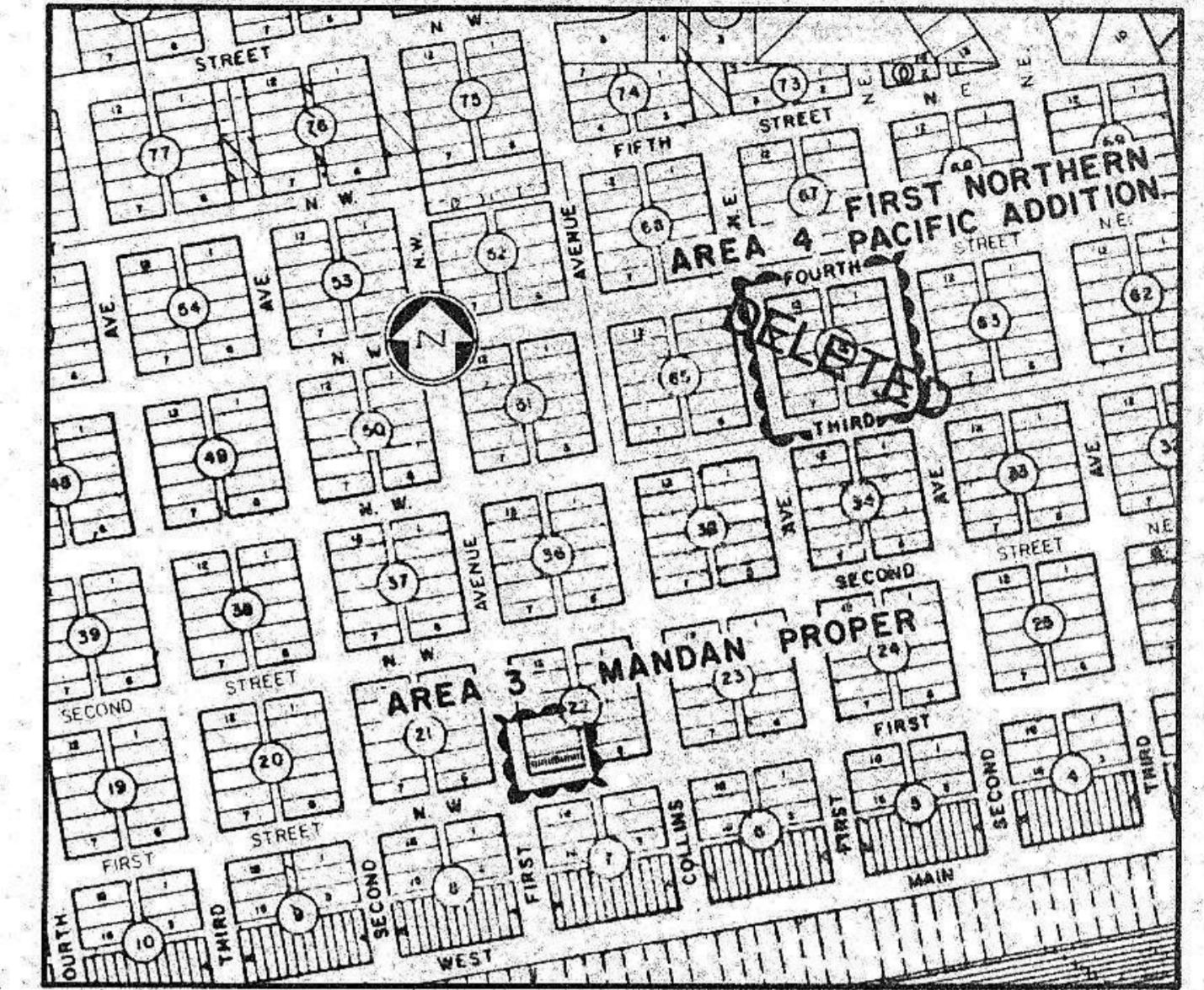
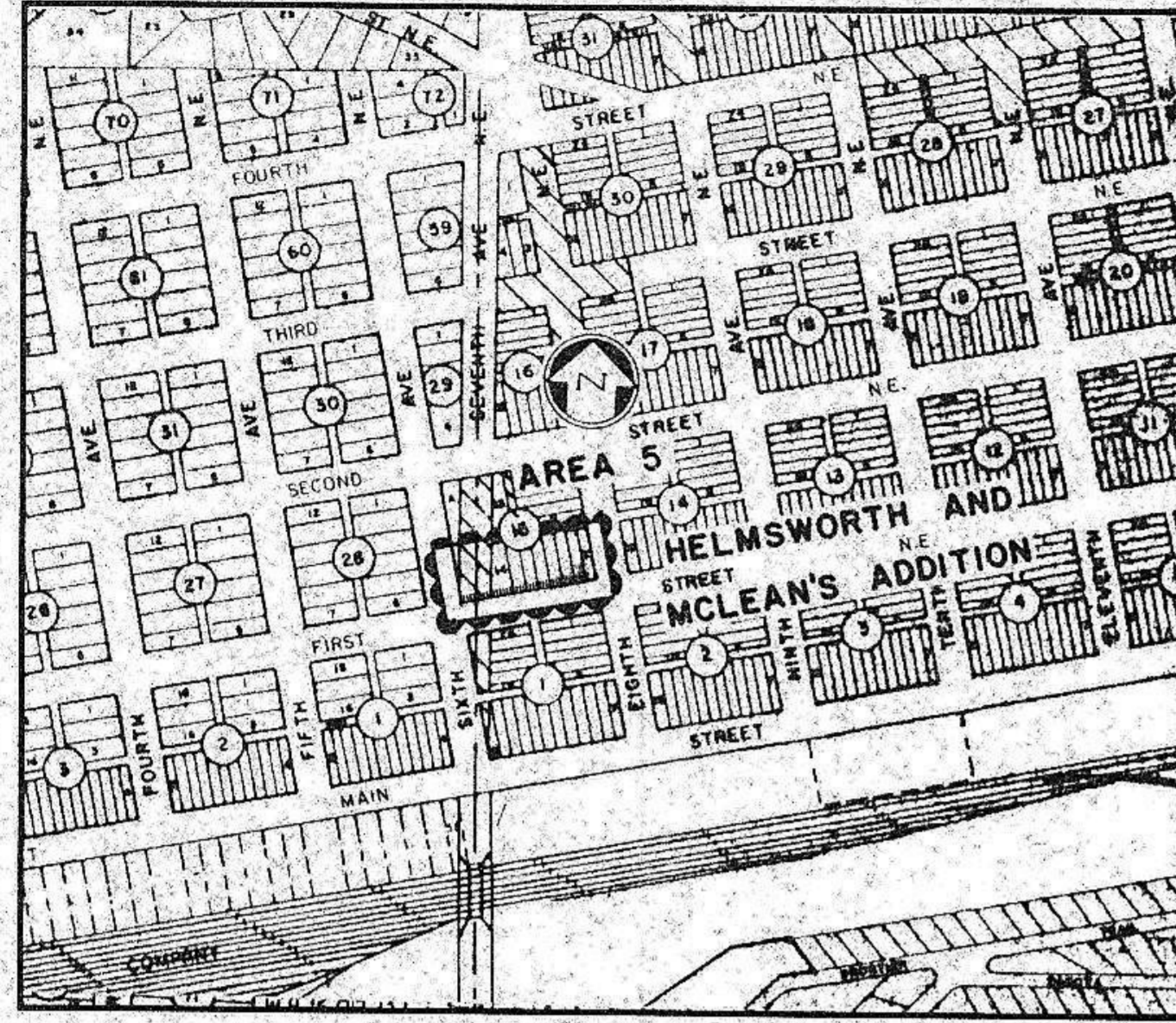
STREET IMPROVEMENT DISTRICT NO. 59 MANDAN, NORTH DAKOTA

PROJECT NO. 79-11

ASBUILT CONSTRUCTION DRAWINGS

INDEX

- SHEET NO. 1 DIVISION STREET BETWEEN JOHN'S DRIVE AND 8TH AVENUE N.E. (AREA 7)
- SHEET NO. 2 FOURTEENTH STREET N.E. BETWEEN COLLINS AVENUE AND ANN'S PLACE (AREA 1) THIRTY-SEVENTH STREET N.W. FROM OLD RED TRAIL TO EXISTING STREET APPROX. 375' WEST (AREA 2) ALLEY, BLOCK 25, MEAD'S ADDITION (AREA 6)
- SHEET NO. 3 BORROW AREA LAYOUT FOR AREA'S 1 & 7
- SHEET NO. 4 PARKING LOT, BLOCK 22, MANDAN PROPER, (MANDAN PUBLIC LIBRARY, AREA 3) PARKING RAMP, BLOCK 15, HELMSWORTH-MCLEAN ADDITION (MANDAN OUTDOOR SWIMMING POOL, AREA 6) STREET LIGHT LAYOUTS, 14TH ST. N.E. (AREA 1) & 37TH ST. N.W. (AREA 2)
- SHEET NO. 4-A MANDAN JR. HIGH SCHOOL
- SHEET NO. 4-B ROOSEVELT GRADE SCHOOL, MARY STARK GRADE SCHOOL
- SHEET NO. 5 PAVING, CURB AND GUTTER DETAILS.
- SHEET NO. 6 STREET LIGHT DETAILS



TOMAN ENGINEERING CO.
CONSULTING ENGINEERS

P 79-11
D 59



APPROVED: *Thomas Little* DATE: 3/14/80
THOMAS LITTLE, P.E.
CITY ENGINEER



MANDAN, NORTH DAKOTA
MARCH, 1980