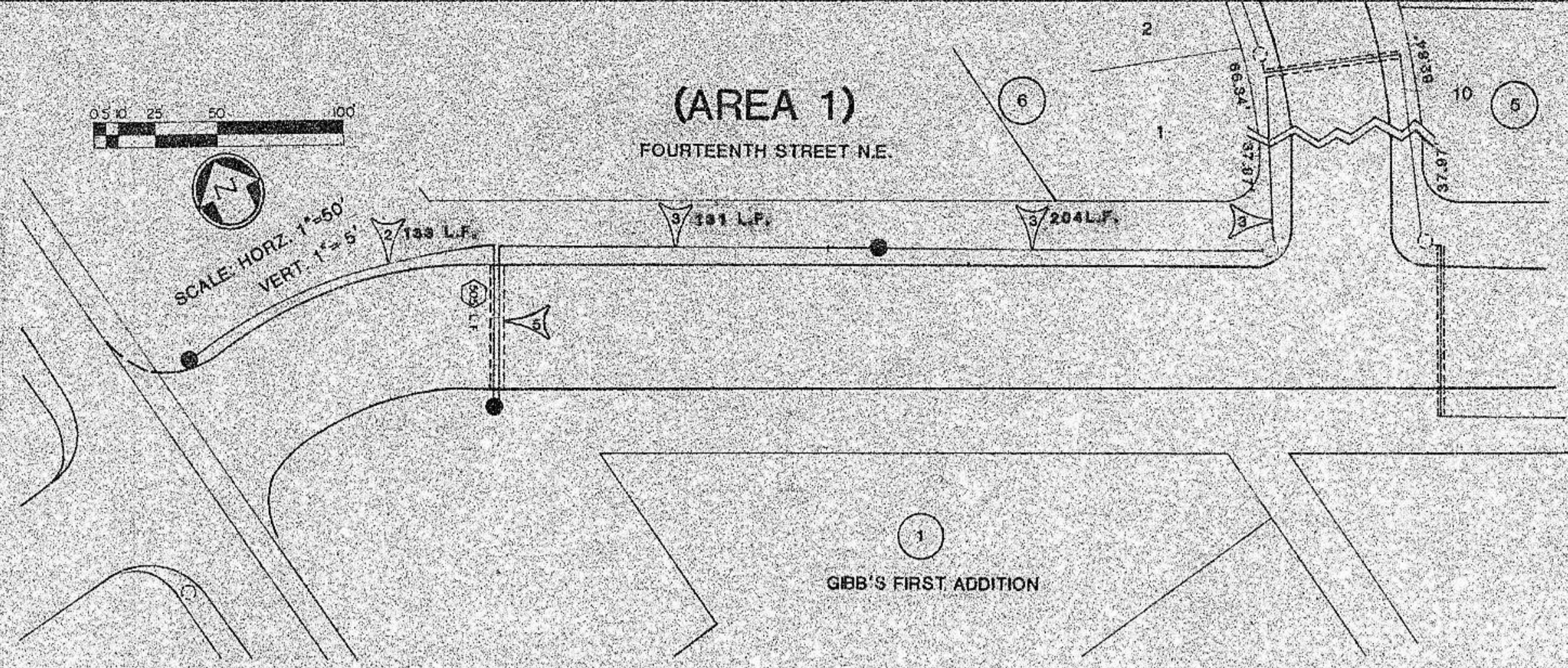


(AREA 1)
FOURTEENTH STREET N.E.



AS-BUILT ELECTRICAL QUANTITIES

Area 1 (14th Street N.E.)

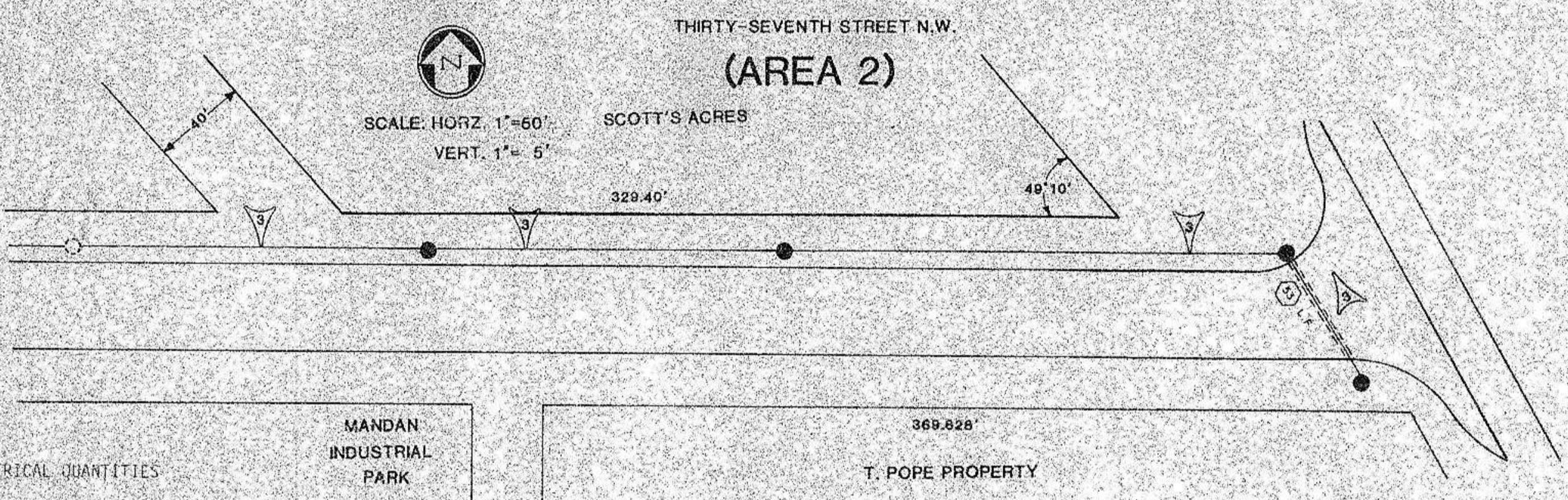
Trenching - 6" Wide	468 L.F.
Street Lights Type A	2 Each
Street Lights Type B	1 Each
2" Conduit Laid in Trench	101 L.F.
3, No. 4 Stranded Copper	395.5 L.F.
2, No. 4 Stranded Copper	183.5 L.F.
Power Pole Relocation	Lump Sum

LEGEND

- ⊙ STREET LIGHT UNIT
- ⊕ JUNCTION BOX
- ⊖ STREET LIGHT FEEDPOINT
- UNDERGROUND CONDUCTOR, TRENCH
- UNDERGROUND CONDUCTOR, IN CONDUIT
- △ NUMBER OF CONDUCTORS
- A = 150 WATT IES
- B = 250 WATT IES
- ⋈ CIRCUIT NO. & STANDING NO.
- ⊙ EXISTING CONTROL CENTER
- ⊙ EXISTING ST. LIGHT UNIT
- NO. OF L.F. CONDUIT TO BE INSTALLED



(AREA 2)
THIRTY-SEVENTH STREET N.W.



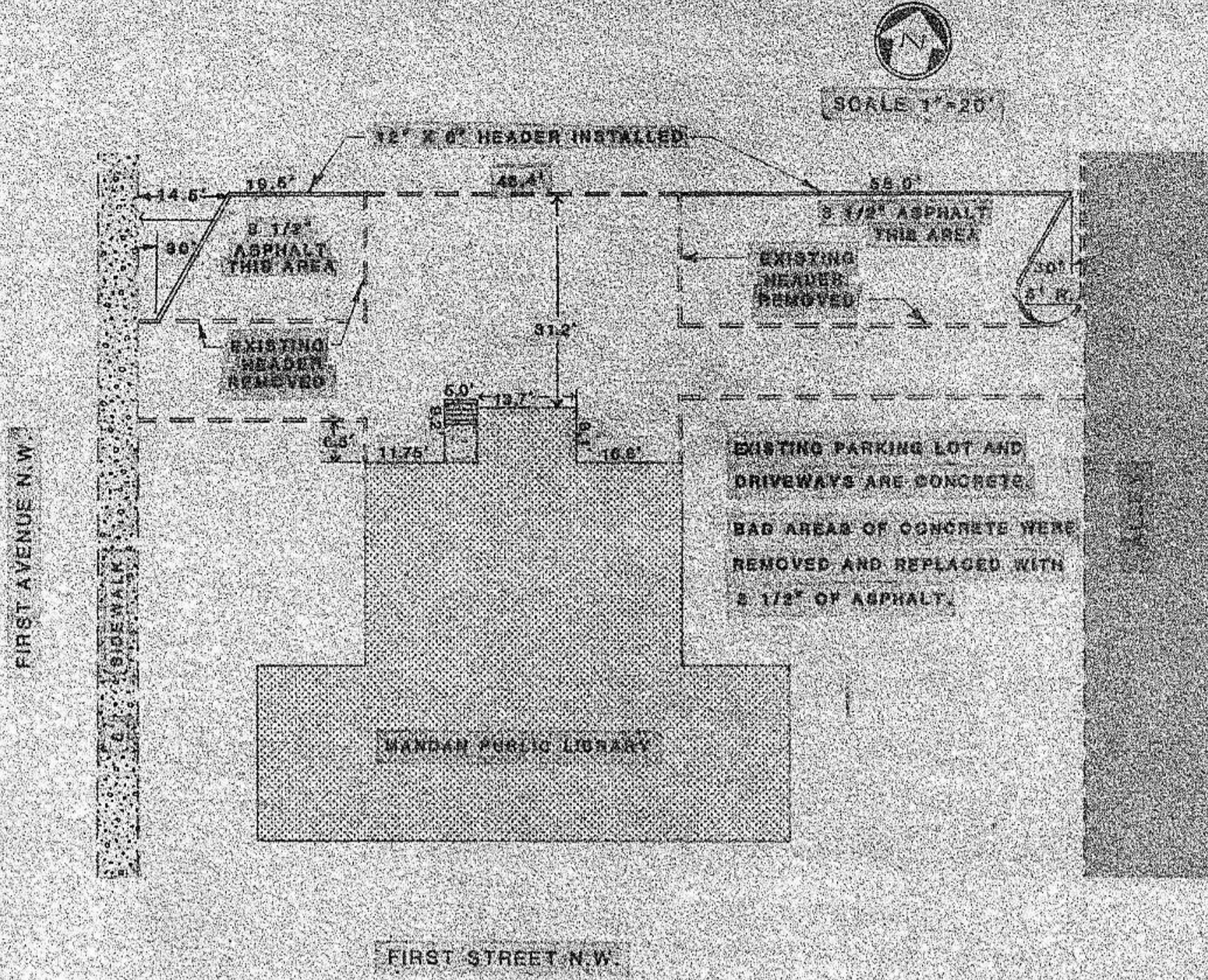
AS-BUILT ELECTRICAL QUANTITIES

Area 2 (37th Street N.W.)

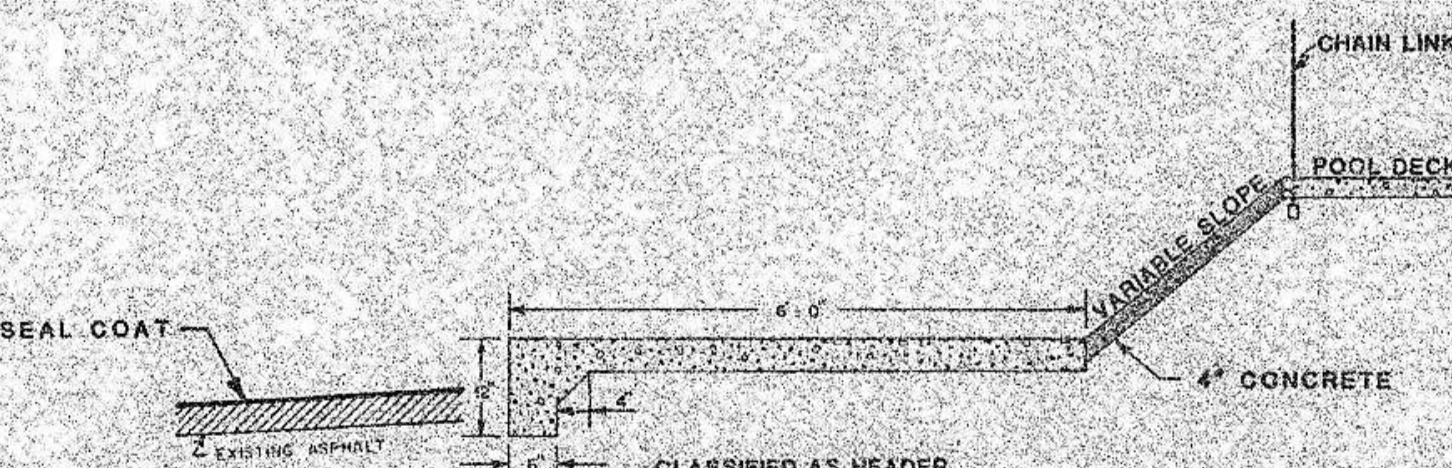
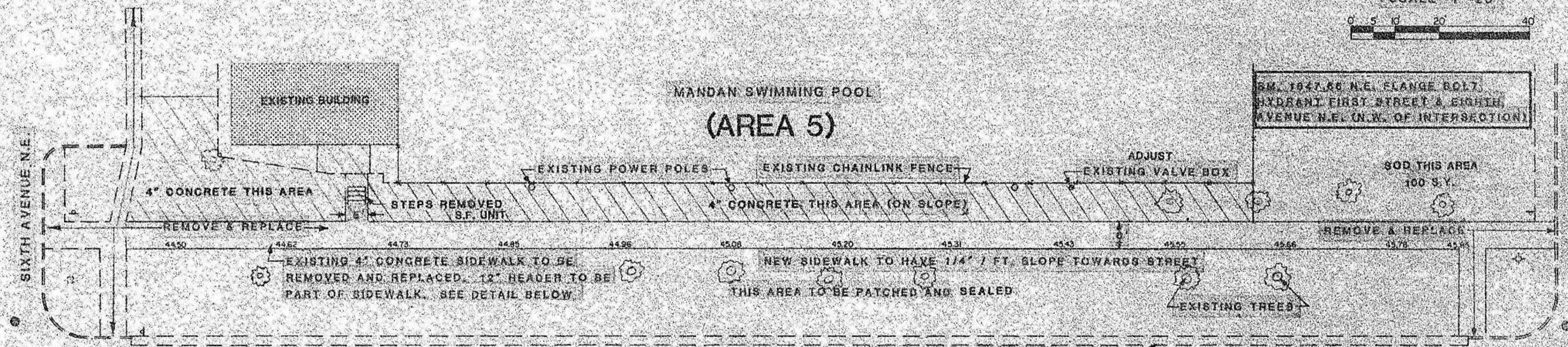
Trenching - 6" Wide	555 L.F.
Street Lights Type A	2 Each
Street Lights Type B	2 Each
2" Conduit Laid in Trench	53 L.F.
3, No. 4 Stranded Copper	955 L.F.

STREET LIGHT LAYOUTS

(AREA 3)



(AREA 5)
MANDAN SWIMMING POOL



COMBINATION SIDEWALK AND HEADER-DETAIL
NO SCALE

As-Built Quantities

Area 5 (Swimming Pool)

Subcut Excavation	70 C.Y.
Stabilized Gravel Base	153 Ton
Subbase Preparation	10 S.Y.
4\"/>	

