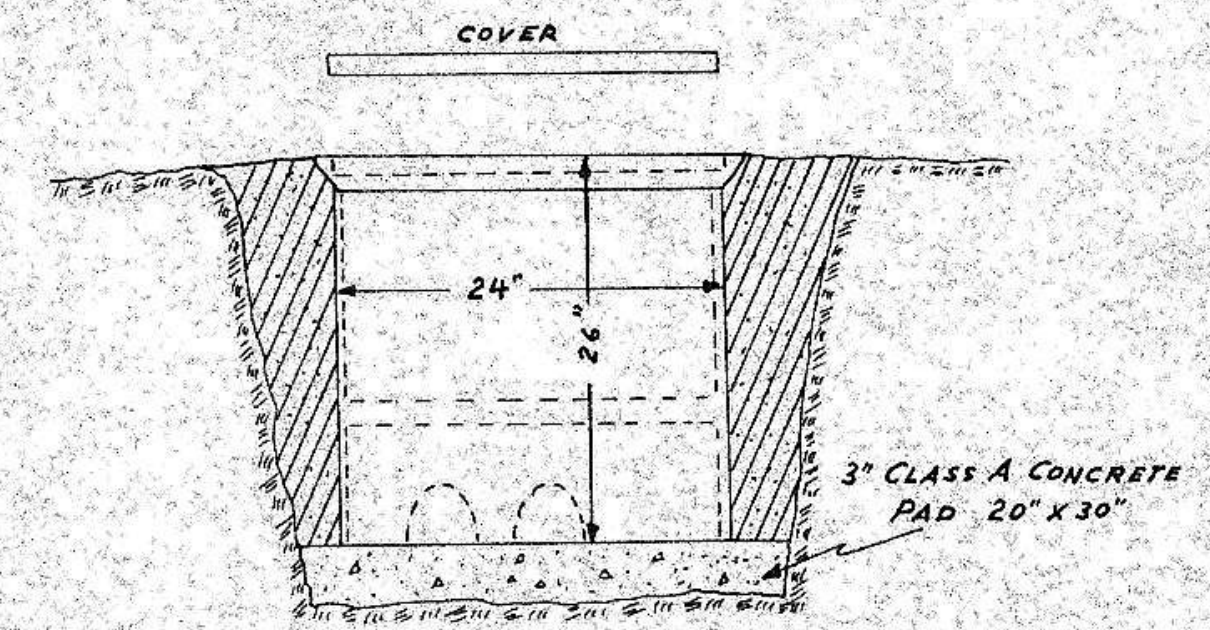
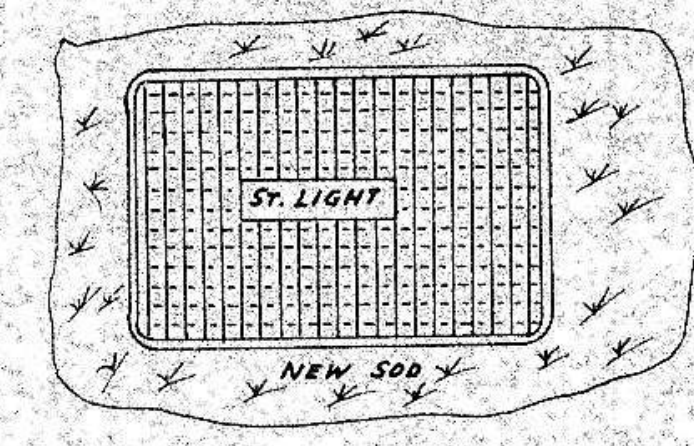
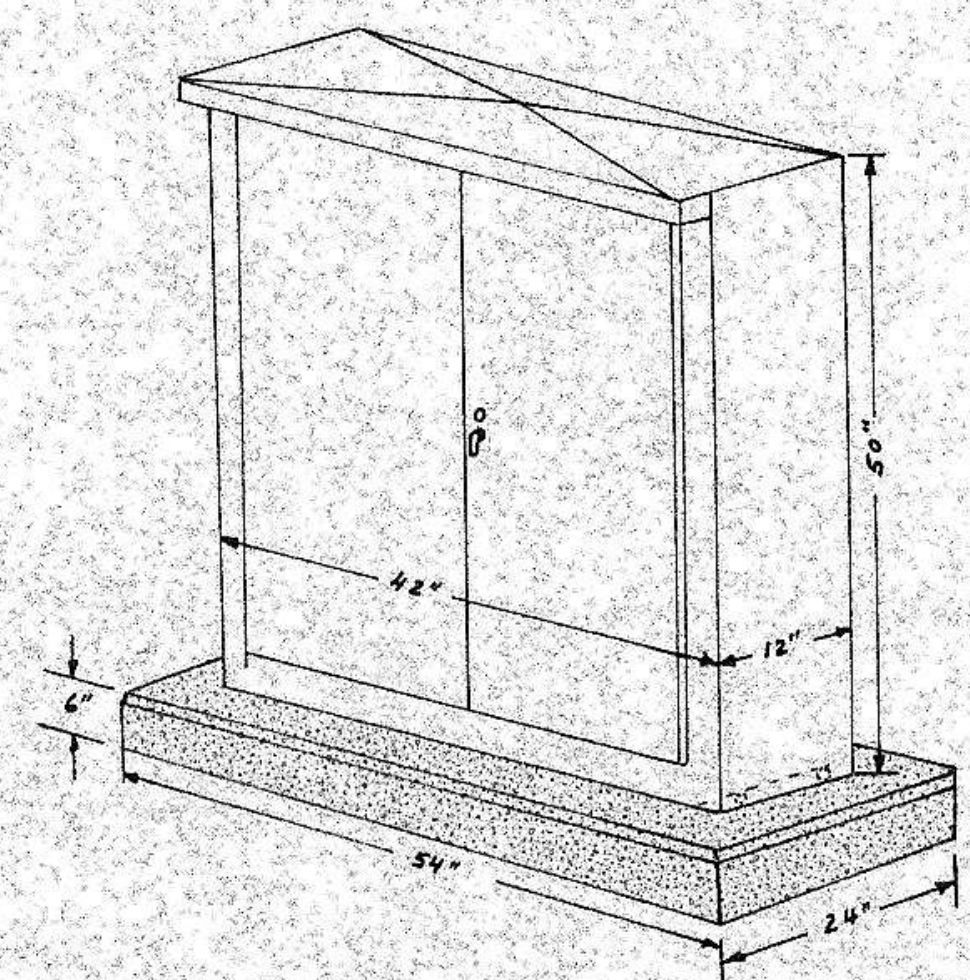


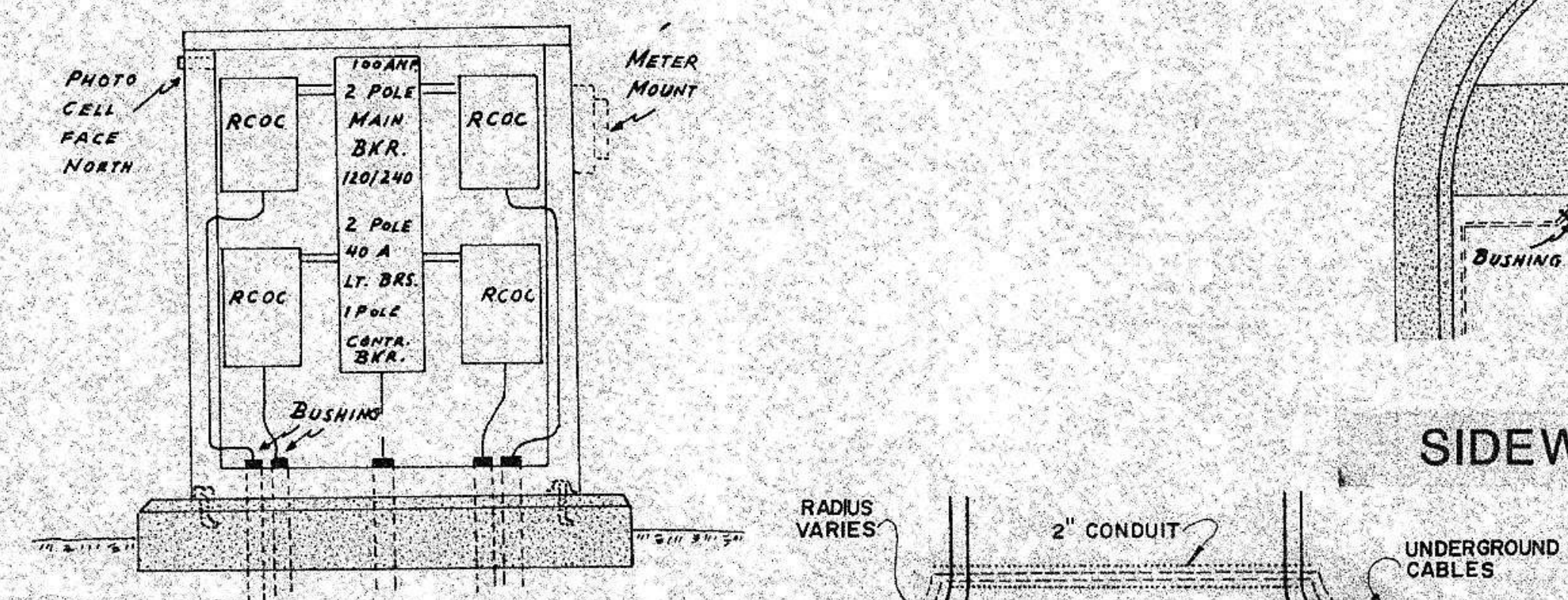
STANDARD AND BASE DETAIL



JUNCTION BOX DETAIL

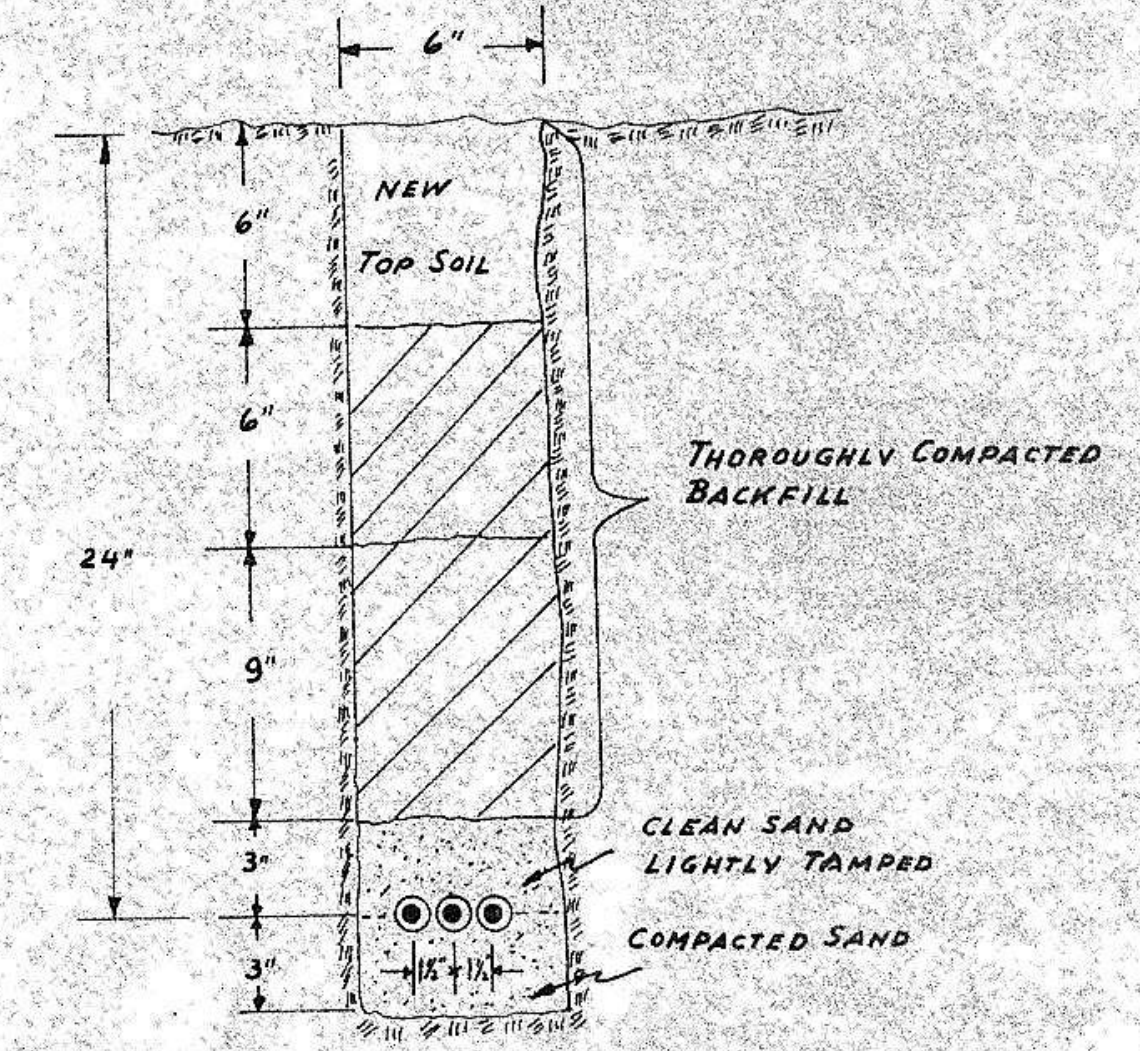


NOTE: DIMENSIONS FOR FEEDPOINT ENCLOSURE AND MOUNTING PAD MAY VARY SLIGHTLY DEPENDING ON ENCLOSURE SELECTED. PAD SIZE SHALL BE 12" WIDER AND 12" DEEPER THAN ENCLOSURE.

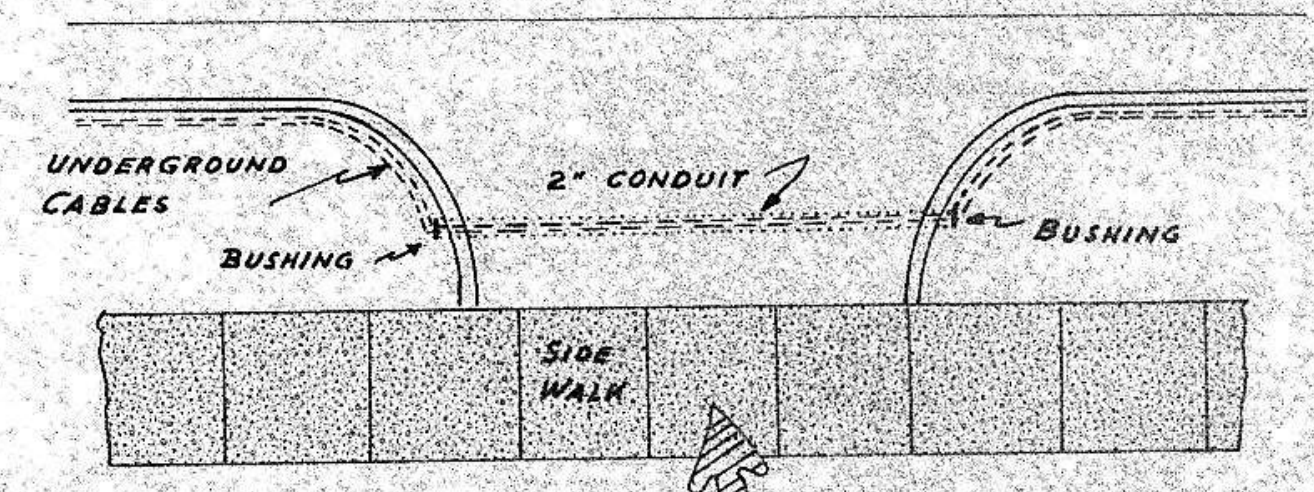


FEEDPOINT DETAIL

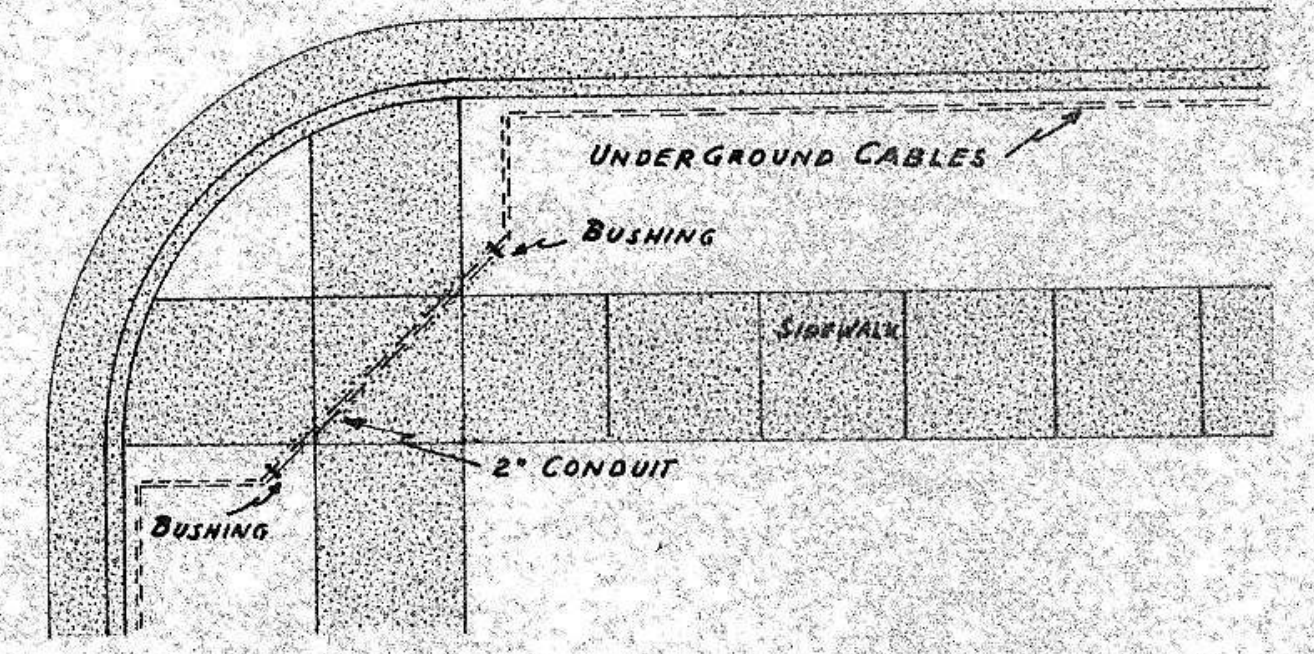
TYPICAL STREET CROSSING



TRENCH DETAIL



NOTE: CONDUIT SHALL BE SLOPED 3" FOR DRAINAGE. MINIMUM COVER OVER CONDUIT TO BE 18" PROVIDE 9" LOOP IN CABLES AT EACH END OF CONDUIT



SIDEWALK AND DRIVEWAY CROSSING

