

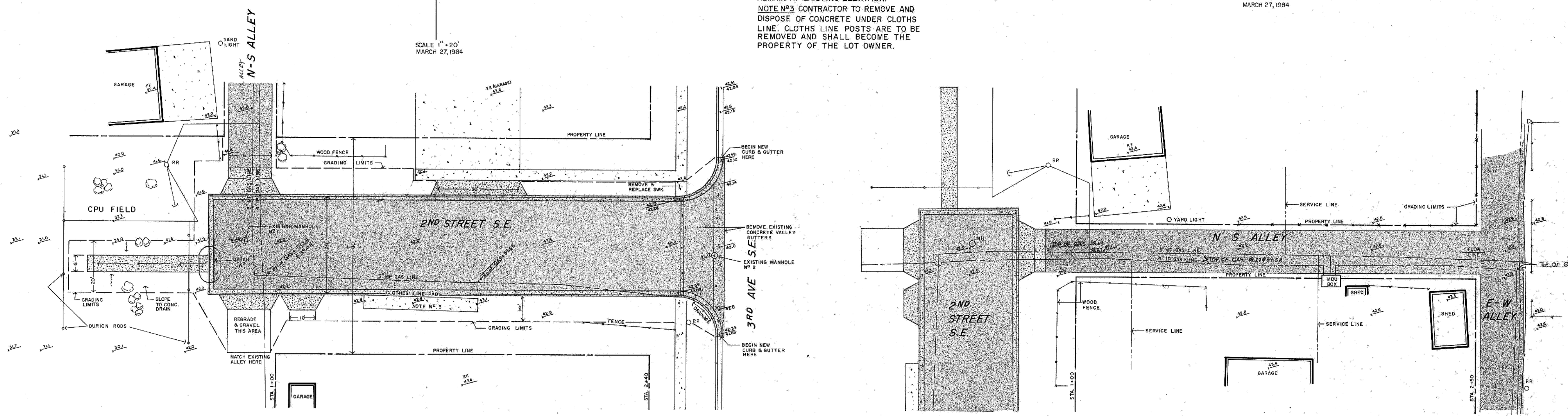
DATE  
BY  
NO. 1  
NO. 2  
NO. 3  
NO. 4  
NO. 5  
NO. 6  
NO. 7  
NO. 8  
NO. 9  
NO. 10  
NO. 11  
NO. 12  
NO. 13  
NO. 14  
NO. 15  
NO. 16  
NO. 17  
NO. 18  
NO. 19  
NO. 20  
NO. 21  
NO. 22  
NO. 23  
NO. 24  
NO. 25  
NO. 26  
NO. 27  
NO. 28  
NO. 29  
NO. 30  
NO. 31  
NO. 32  
NO. 33  
NO. 34  
NO. 35  
NO. 36  
NO. 37  
NO. 38  
NO. 39  
NO. 40  
NO. 41  
NO. 42  
NO. 43  
NO. 44  
NO. 45  
NO. 46  
NO. 47  
NO. 48  
NO. 49  
NO. 50  
NO. 51  
NO. 52  
NO. 53  
NO. 54  
NO. 55  
NO. 56  
NO. 57  
NO. 58  
NO. 59  
NO. 60  
NO. 61  
NO. 62  
NO. 63  
NO. 64  
NO. 65  
NO. 66  
NO. 67  
NO. 68  
NO. 69  
NO. 70  
NO. 71  
NO. 72  
NO. 73  
NO. 74  
NO. 75  
NO. 76  
NO. 77  
NO. 78  
NO. 79  
NO. 80  
NO. 81  
NO. 82  
NO. 83  
NO. 84  
NO. 85  
NO. 86  
NO. 87  
NO. 88  
NO. 89  
NO. 90  
NO. 91  
NO. 92  
NO. 93  
NO. 94  
NO. 95  
NO. 96  
NO. 97  
NO. 98  
NO. 99  
NO. 100

DATE  
BY  
NO. 1  
NO. 2  
NO. 3  
NO. 4  
NO. 5  
NO. 6  
NO. 7  
NO. 8  
NO. 9  
NO. 10  
NO. 11  
NO. 12  
NO. 13  
NO. 14  
NO. 15  
NO. 16  
NO. 17  
NO. 18  
NO. 19  
NO. 20  
NO. 21  
NO. 22  
NO. 23  
NO. 24  
NO. 25  
NO. 26  
NO. 27  
NO. 28  
NO. 29  
NO. 30  
NO. 31  
NO. 32  
NO. 33  
NO. 34  
NO. 35  
NO. 36  
NO. 37  
NO. 38  
NO. 39  
NO. 40  
NO. 41  
NO. 42  
NO. 43  
NO. 44  
NO. 45  
NO. 46  
NO. 47  
NO. 48  
NO. 49  
NO. 50  
NO. 51  
NO. 52  
NO. 53  
NO. 54  
NO. 55  
NO. 56  
NO. 57  
NO. 58  
NO. 59  
NO. 60  
NO. 61  
NO. 62  
NO. 63  
NO. 64  
NO. 65  
NO. 66  
NO. 67  
NO. 68  
NO. 69  
NO. 70  
NO. 71  
NO. 72  
NO. 73  
NO. 74  
NO. 75  
NO. 76  
NO. 77  
NO. 78  
NO. 79  
NO. 80  
NO. 81  
NO. 82  
NO. 83  
NO. 84  
NO. 85  
NO. 86  
NO. 87  
NO. 88  
NO. 89  
NO. 90  
NO. 91  
NO. 92  
NO. 93  
NO. 94  
NO. 95  
NO. 96  
NO. 97  
NO. 98  
NO. 99  
NO. 100

**CONSTRUCTION NOTES**

- NOTE #1: EXISTING MANHOLE #1 WILL BE LOWERED 0.25.
- NOTE #2: EXISTING MANHOLE #2 WILL REMAIN AT EXISTING ELEVATION.
- NOTE #3: CONTRACTOR TO REMOVE AND DISPOSE OF CONCRETE UNDER CLOTHS LINE. CLOTHS LINE POSTS ARE TO BE REMOVED AND SHALL BECOME THE PROPERTY OF THE LOT OWNER.

SCALE 1" = 20'  
MARCH 27, 1984

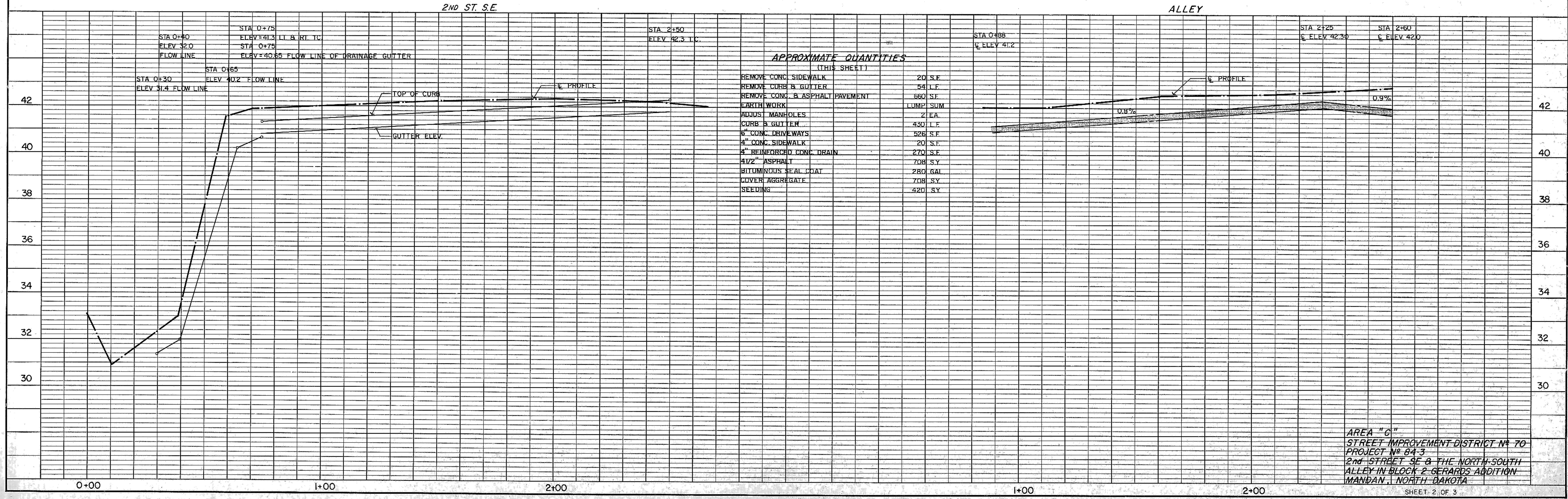


C.P.U. = MDU CATHODIC PROTECTION UNIT

**APPROXIMATE QUANTITIES**

(THIS SHEET)

REMOVE CONC. SIDEWALK	20 S.F.
REMOVE CURB & GUTTER	54 L.F.
REMOVE CONC. & ASPHALT PAVEMENT	660 S.F.
EARTH WORK	LUMP SUM
ADJUST MANHOLES	2 EA.
CURB & GUTTER	430 L.F.
6" CONC. DRIVEWAYS	526 S.F.
4" CONC. SIDEWALK	20 S.F.
4" REINFORCED CONC. DRAIN	270 S.F.
4 1/2" ASPHALT	708 S.Y.
BITUMINOUS SEAL COAT	280 GAL.
COVER AGGREGATE	708 S.Y.
SEEDING	420 S.Y.



AREA "G"  
STREET IMPROVEMENT DISTRICT # 70  
PROJECT # 84-3  
2nd STREET S.E. & THE NORTH-SOUTH  
ALLEY IN BLOCK 2 GERARDS ADDITION  
MANDAN, NORTH DAKOTA