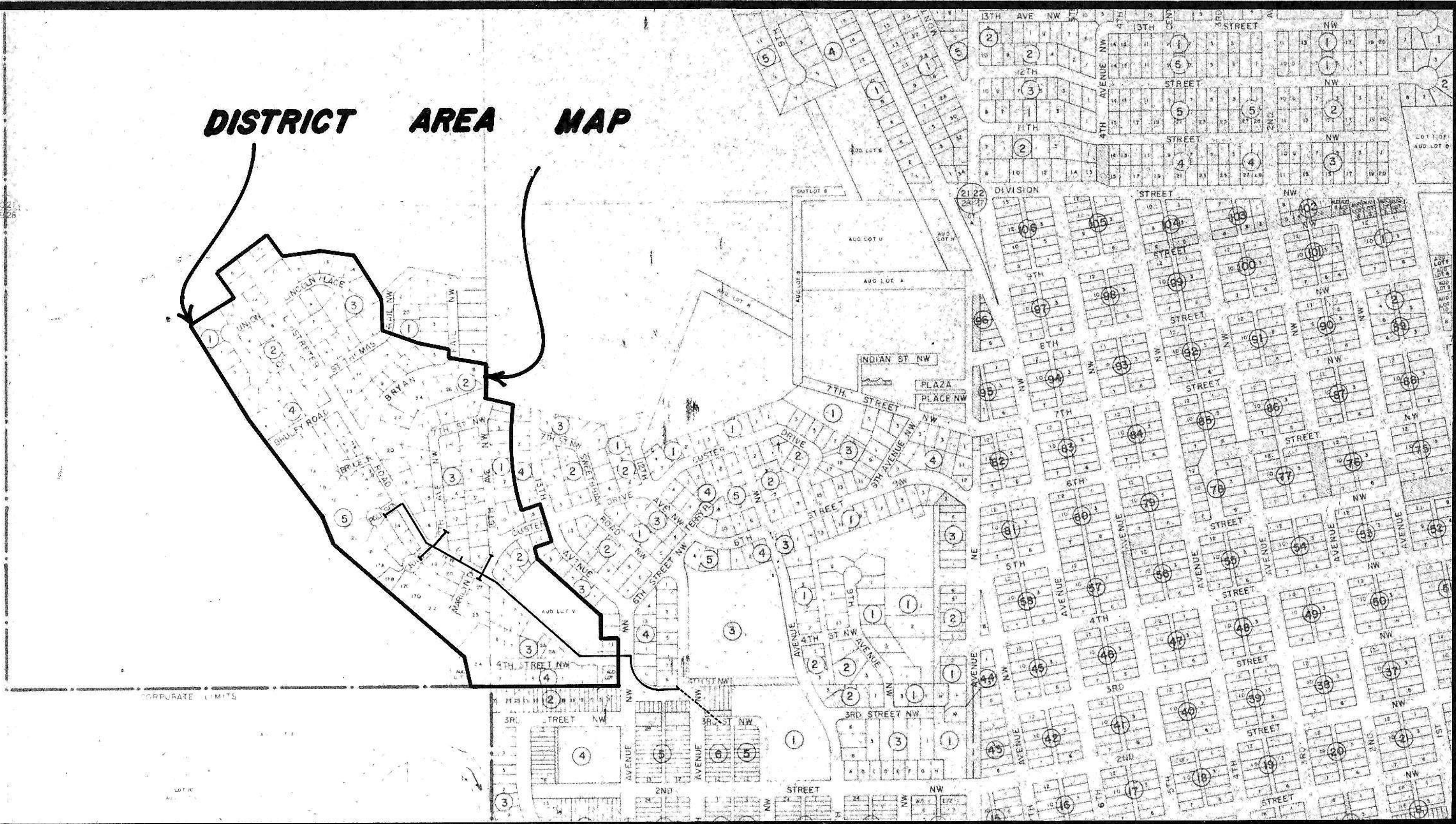
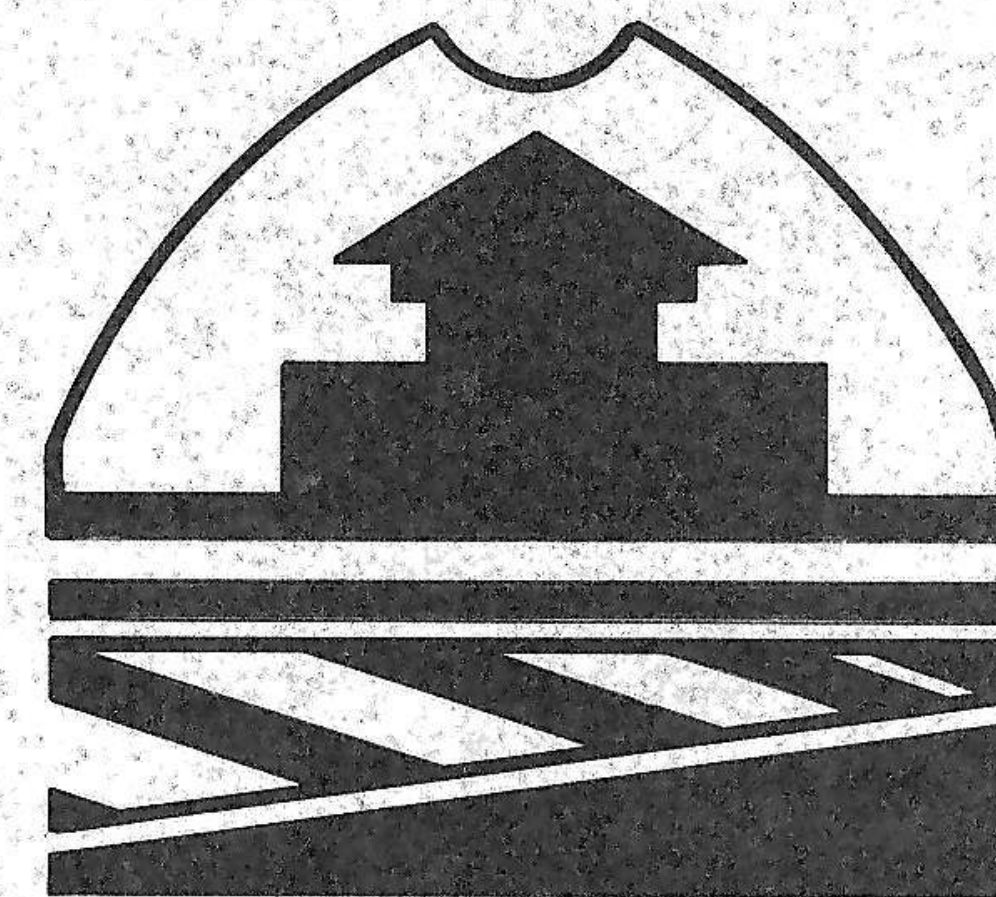


**DISTRICT AREA MAP**



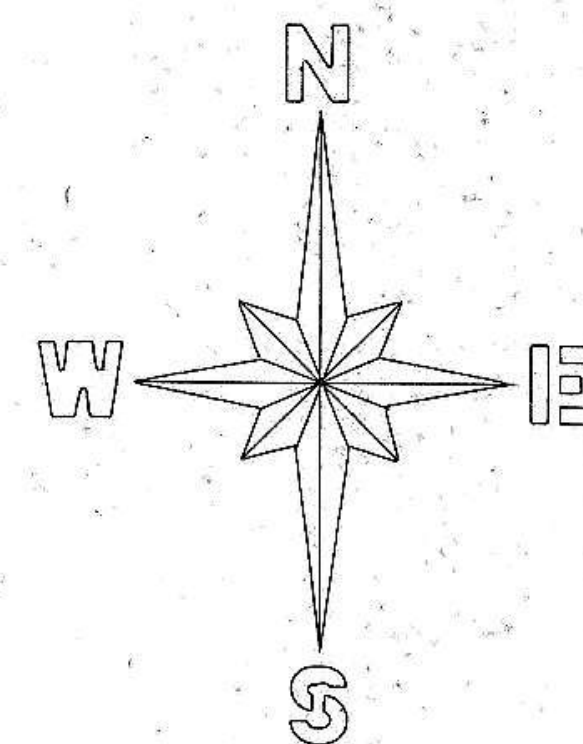
**CITY OF MANDAN**



**ENGINEERS CERTIFICATE**

I, THOMAS R. LITTLE BEING A REGISTERED PROFESSIONAL ENGINEER, HEREBY CERTIFY THAT THE ATTACHED PLANS WERE PREPARED UNDER MY SUPERVISION AND ARE COMPLETE AND CORRECT TO THE BEST OF MY KNOWLEDGE AND BELIEF.

*Thomas R. Little*  
 THOMAS R. LITTLE P.E., R.L.S.  
 CITY ENGINEER  
 MANDAN N.D.



**STREET IMPROVEMENT DISTRICT No. 73**

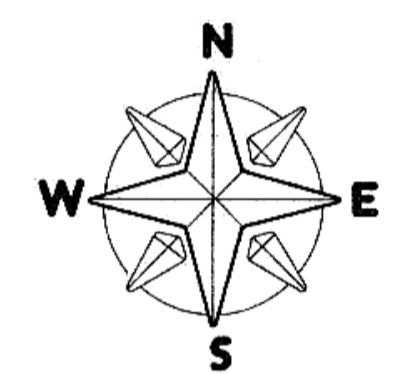
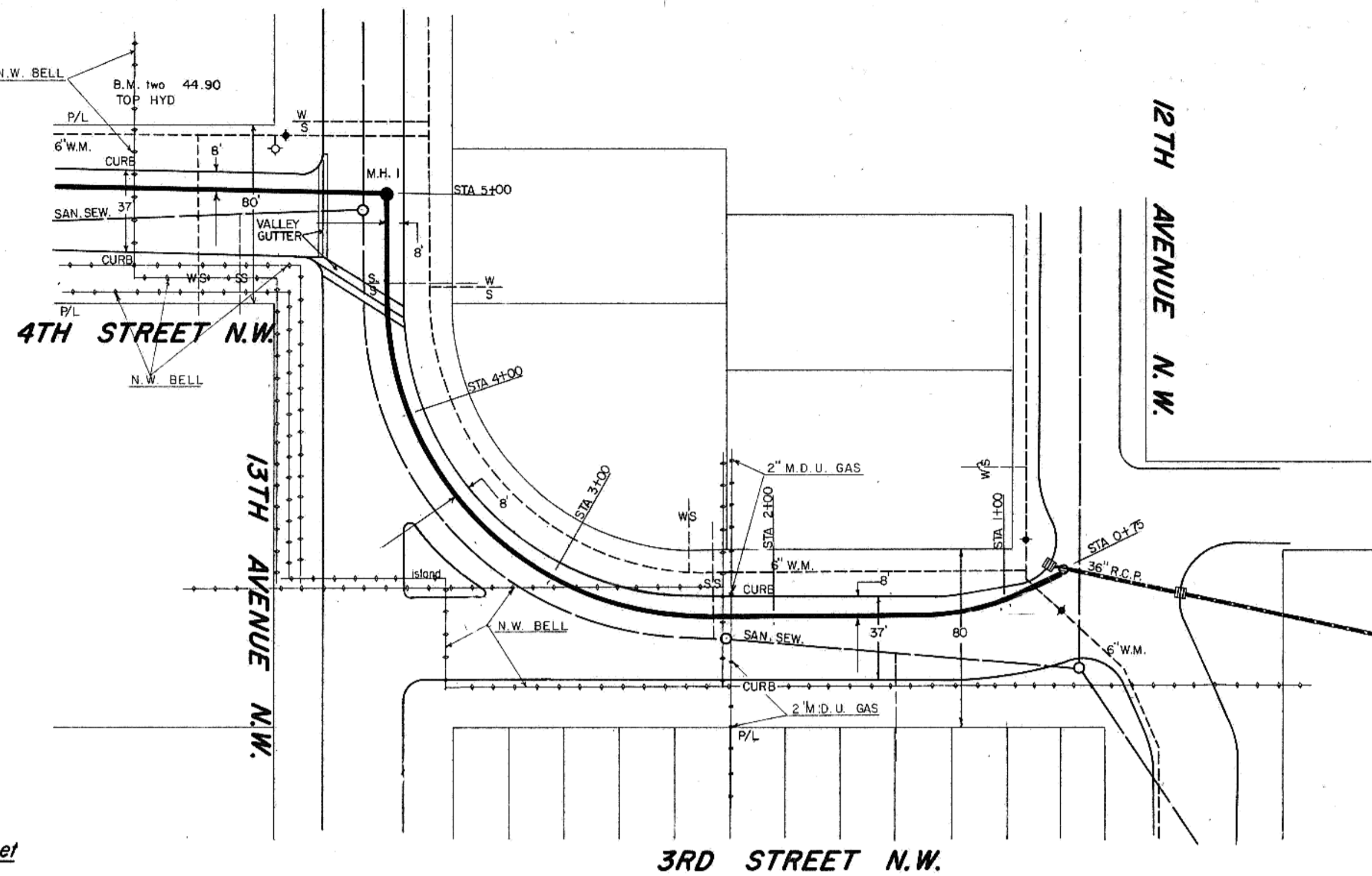
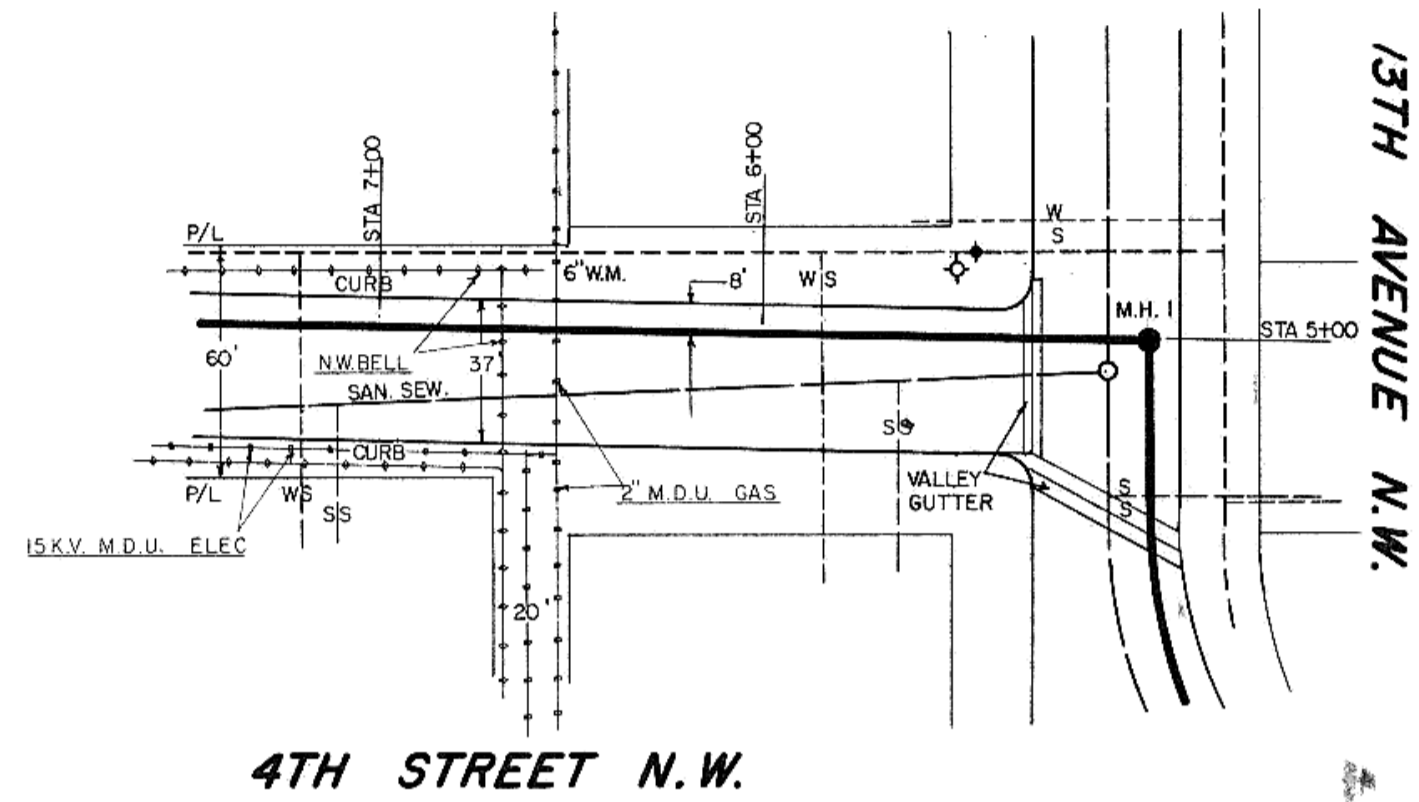
**PROJECT No. 87-5**

SHEET 1-4 COVER SHEET  
SHEET 2-4 3RD ST N.W. from 12TH AVE N.W. to 4TH ST. N.W.  
SHEET 3-4 LOHSTRETER RD. from 4TH ST. N.W. to PAULSEN DR.  
SHEET 4-4 PAULSEN DR., CRAIG DR., 16TH and 17TH AVE. N.W.

D 73

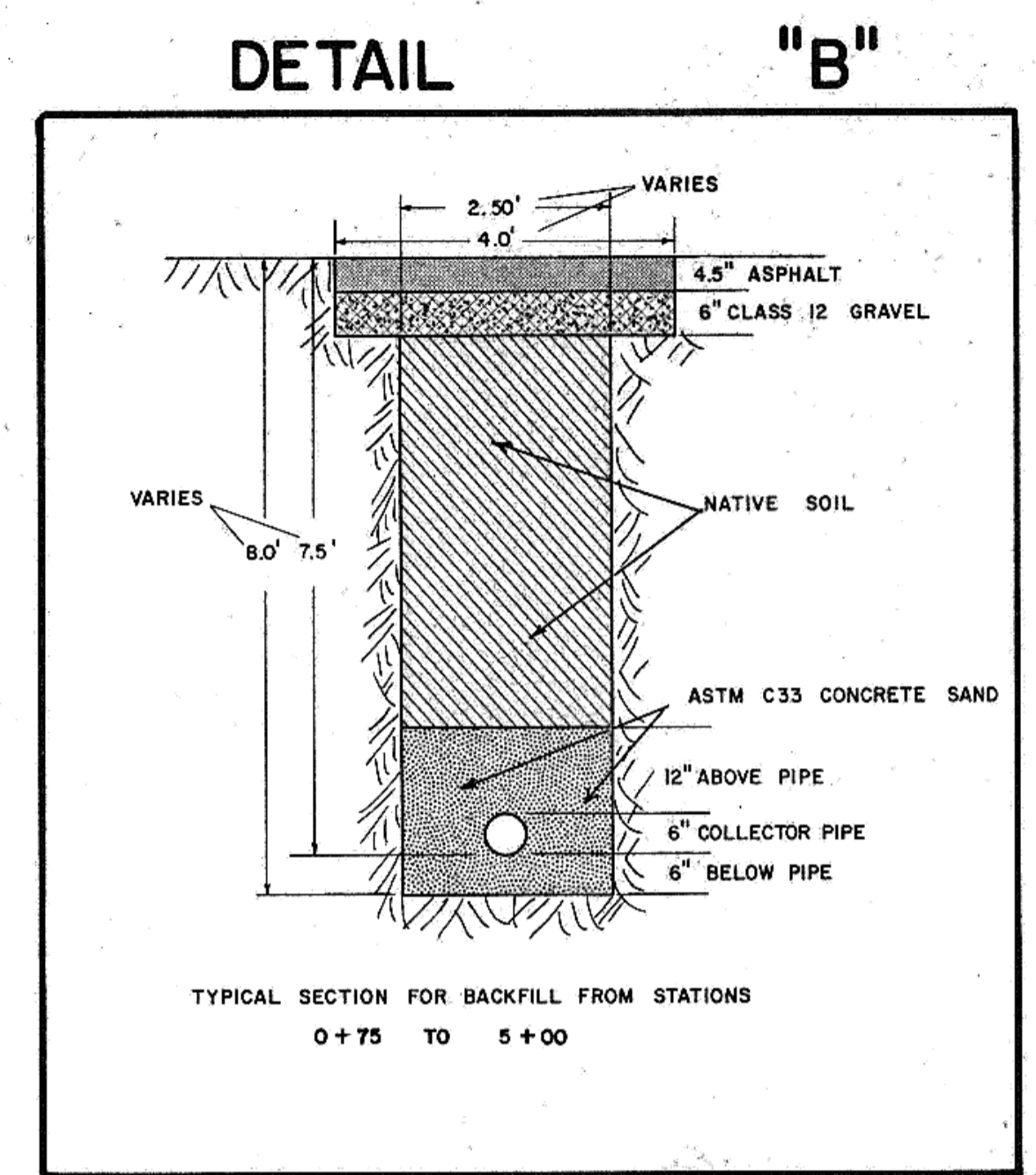
P 87-5

DATE	
BY	
PLAN	REVIEWED
NOTE BOOK	PLOTTED
NO.	ALIGNMENT CHECKED
	P.L. OF A.I. CHECKED

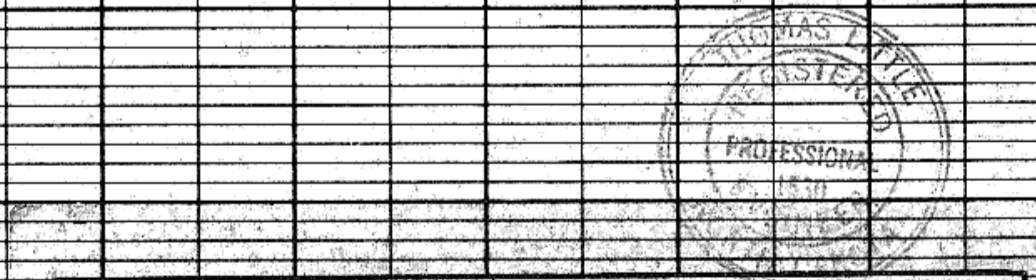
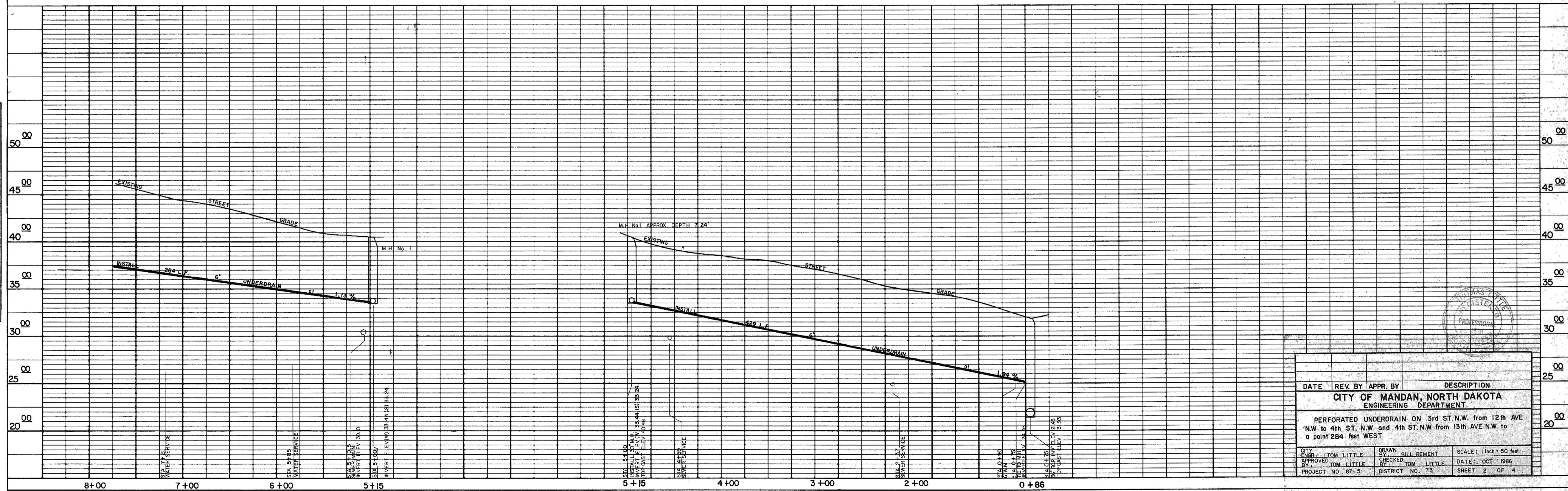


SCALE 1 inch = 50 feet

NOTE: Sewer service elevations are at SANITARY SEWER MAIN



DATE	
BY	
PROFILE	REVIEWED
NOTE BOOK	PLOTTED
NO.	GRADES CHECKED
	E.L.'S NOTED
	FINISHES NOTATIONS CHECKED

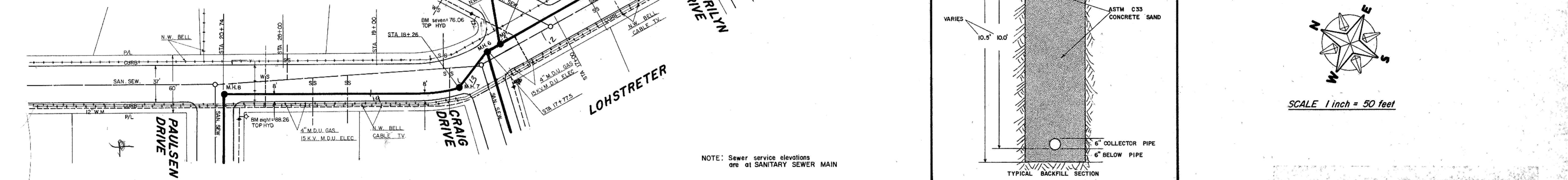
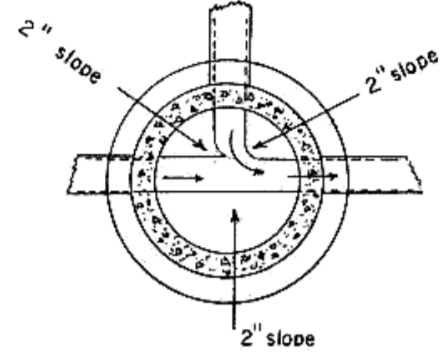
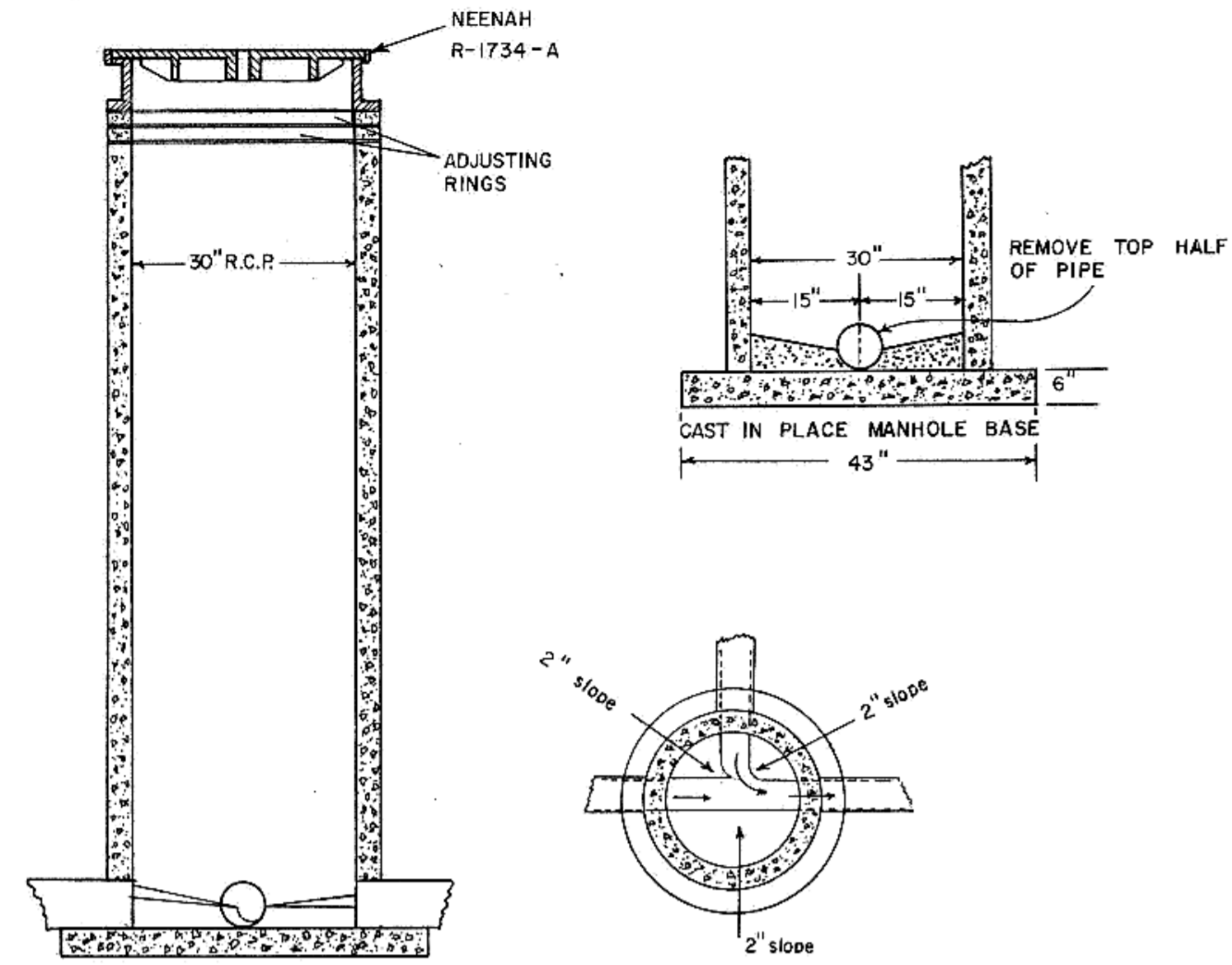


DATE	REV. BY	APPR. BY	DESCRIPTION
CITY OF MANDAN, NORTH DAKOTA ENGINEERING DEPARTMENT			
PERFORATED UNDERDRAIN ON 3rd ST. N.W. FROM 12th AVE N.W. TO 4th ST. N.W. AND 4th ST. N.W. FROM 13th AVE N.W. TO A POINT 284 FEET WEST			
CITY ENGR. TOM LITTLE	BY: BILL BEMENT	CHECKED: TOM LITTLE	DATE: OCT 1986
APPROVED BY: TOM LITTLE	CHECKED BY: TOM LITTLE	DATE: OCT 1986	PROJECT NO. 87-5
	DISTRICT NO. 73	SHEET 2 OF 4	

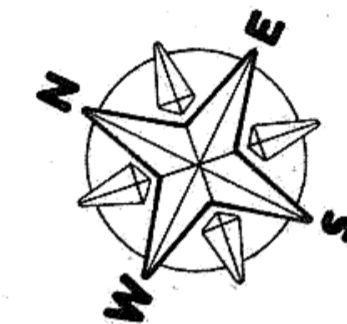
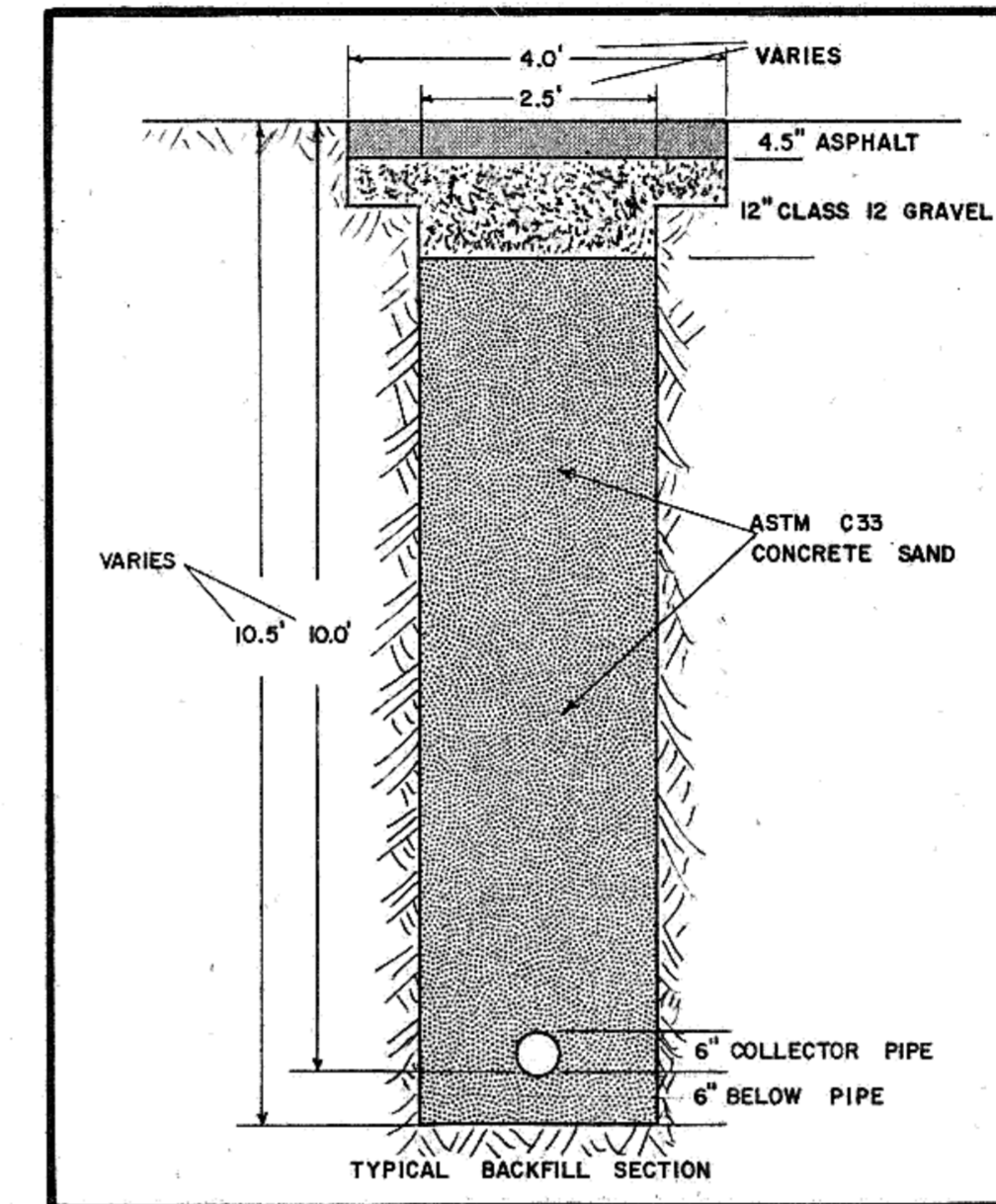
PROJECT 87-5

PLAN	DATE
NO. 1	
NO. 2	
NO. 3	
NO. 4	
NO. 5	
NO. 6	
NO. 7	
NO. 8	
NO. 9	
NO. 10	

PROFILE	DATE
NO. 1	
NO. 2	
NO. 3	
NO. 4	
NO. 5	
NO. 6	
NO. 7	
NO. 8	
NO. 9	
NO. 10	



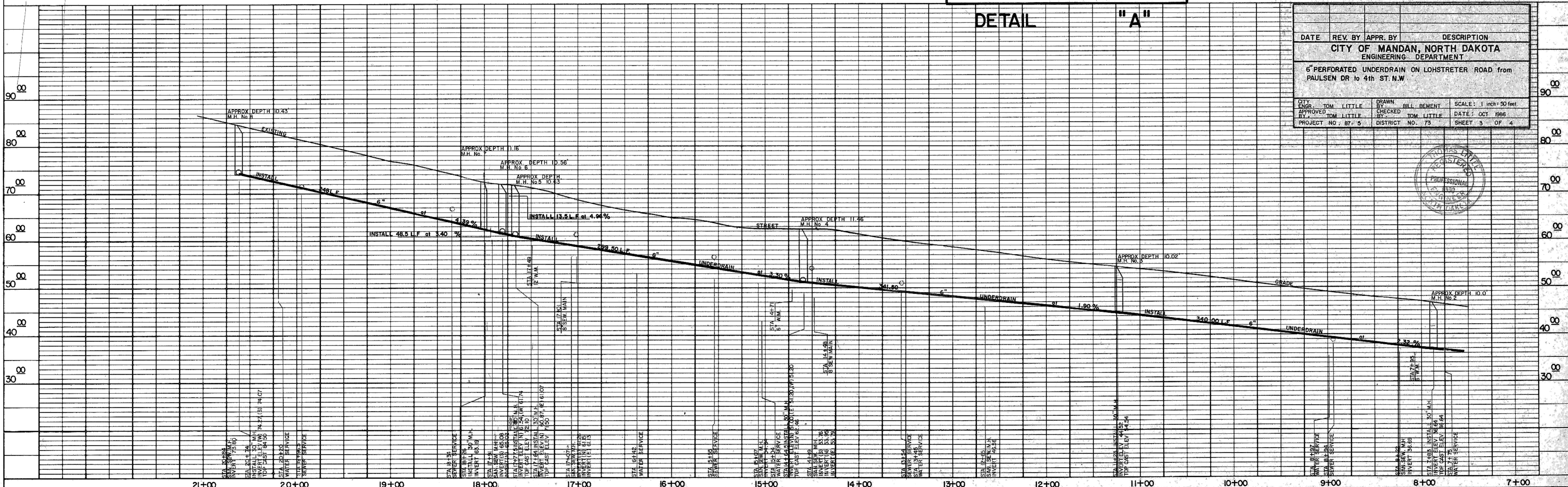
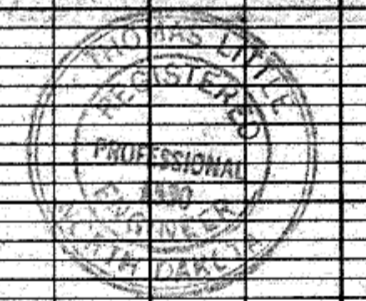
NOTE: Sewer service elevations are at SANITARY SEWER MAIN



SCALE 1 inch = 50 feet

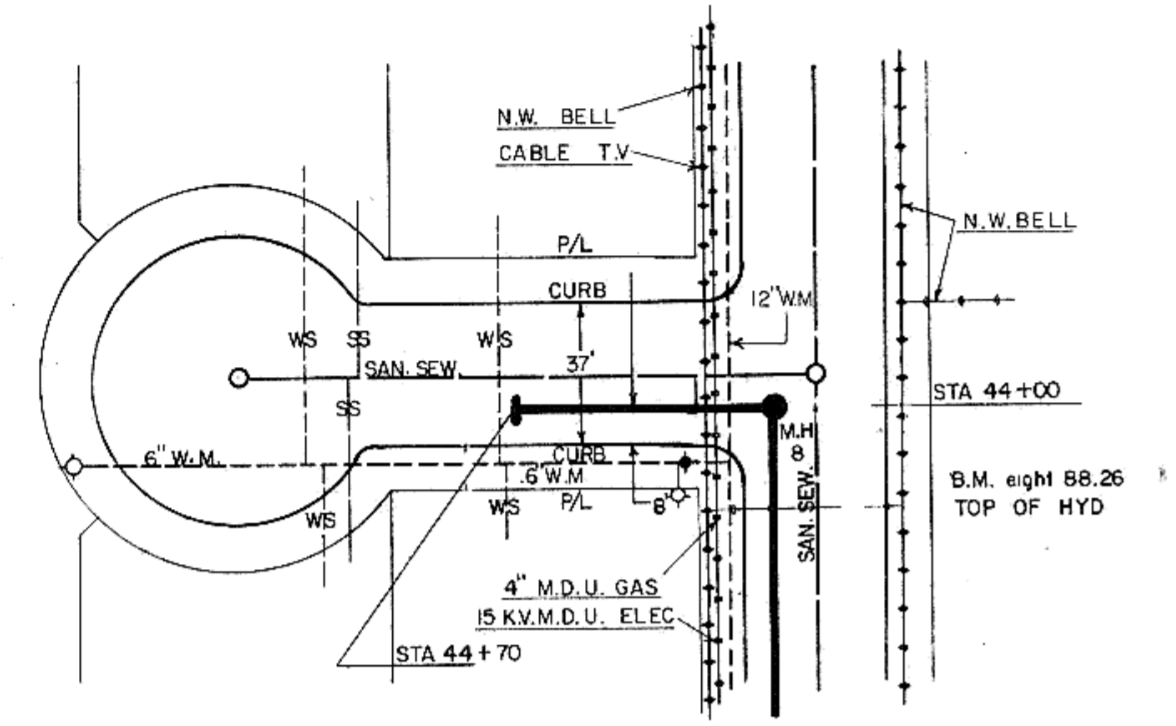
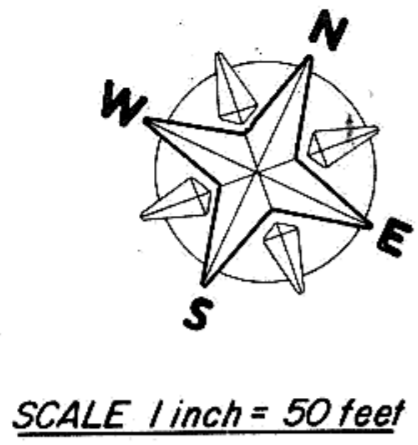
DETAIL "A"

DATE	REV. BY	APPR. BY	DESCRIPTION
			CITY OF MANDAN, NORTH DAKOTA ENGINEERING DEPARTMENT
			6" PERFORATED UNDERDRAIN ON LOHSTRETER ROAD from PAULSEN DR to 4th ST. N.W.
CITY ENGR.	TOM LITTLE	BY	BILL BEMENT
APPROVED BY	TOM LITTLE	CHECKED BY	TOM LITTLE
PROJECT NO.	87-5	DISTRICT NO.	73
		SCALE:	1 inch = 50 feet
		DATE:	OCT 1986
		SHEET:	3 OF 4

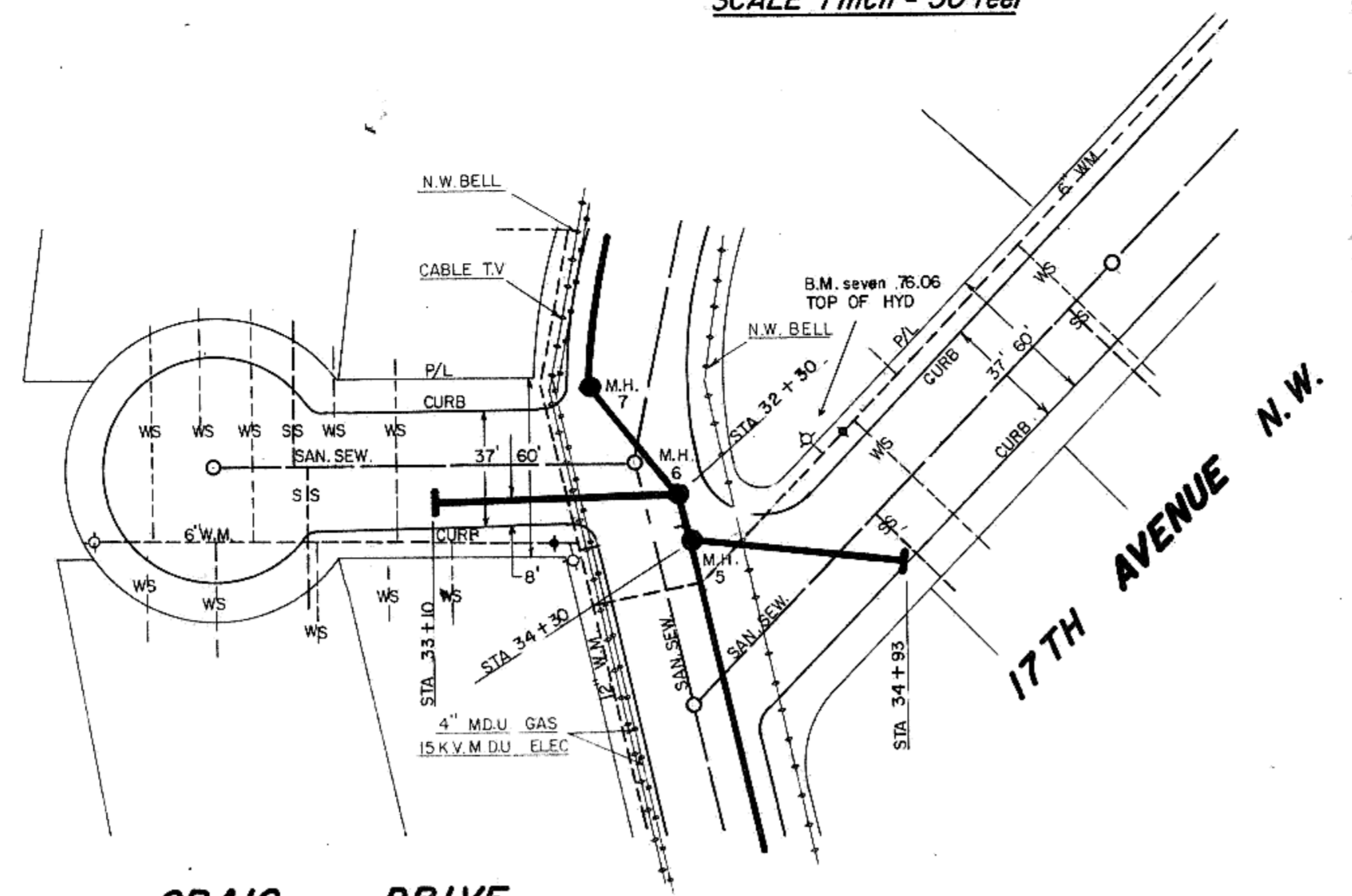
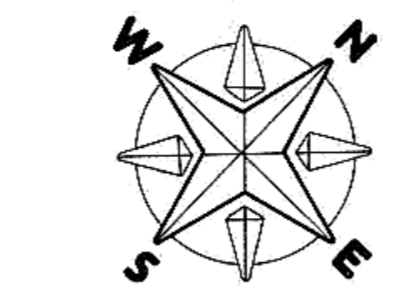


DATE: \_\_\_\_\_ BY: \_\_\_\_\_  
 PLAN: \_\_\_\_\_  
 CHECKED: \_\_\_\_\_  
 DATE: \_\_\_\_\_ BY: \_\_\_\_\_  
 NOTE BOOK: \_\_\_\_\_  
 NO. \_\_\_\_\_

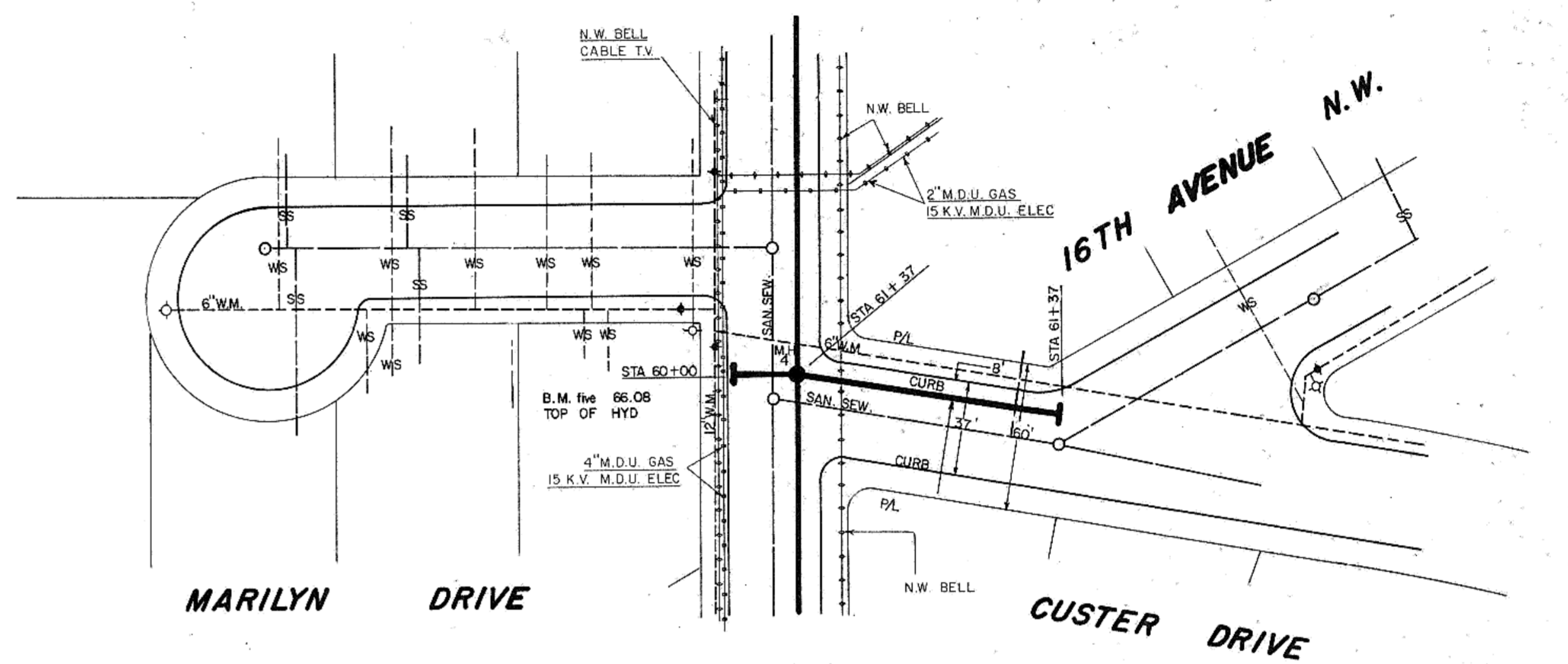
DATE: \_\_\_\_\_ BY: \_\_\_\_\_  
 PROFILE: \_\_\_\_\_  
 CHECKED: \_\_\_\_\_  
 DATE: \_\_\_\_\_ BY: \_\_\_\_\_  
 NOTE BOOK: \_\_\_\_\_  
 NO. \_\_\_\_\_



PAULSEN DRIVE



CRAIG DRIVE



MARILYN DRIVE

CUSTER DRIVE

DATE	REV. BY	APPR. BY	DESCRIPTION
			CITY OF MANDAN, NORTH DAKOTA ENGINEERING DEPARTMENT
			6" PERFORATED UNDERDRAIN ON PAULSEN DR., CRAIG DR 16th ST. N.W. and 17th ST. N.W.
			CITY ENGR. TOM LITTLE DRAWN BY BILL BEMENT SCALE: 1 inch = 50 feet
			APPROVED BY TOM LITTLE CHECKED BY TOM LITTLE DATE: OCT 1986
			PROJECT NO. 87-5 DISTRICT NO. 73 SHEET 4 OF 4

