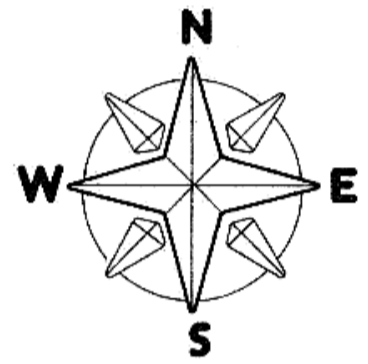
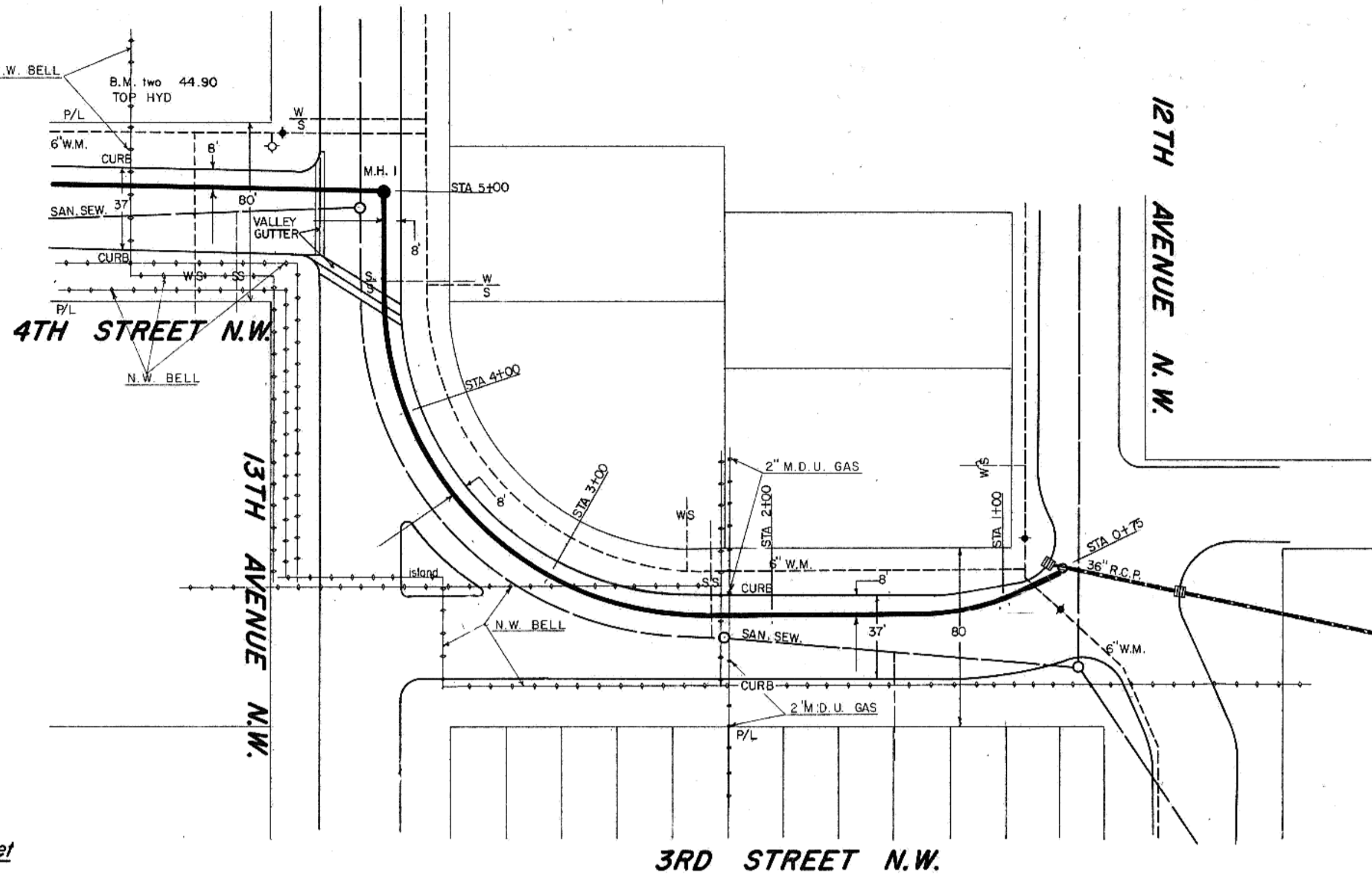
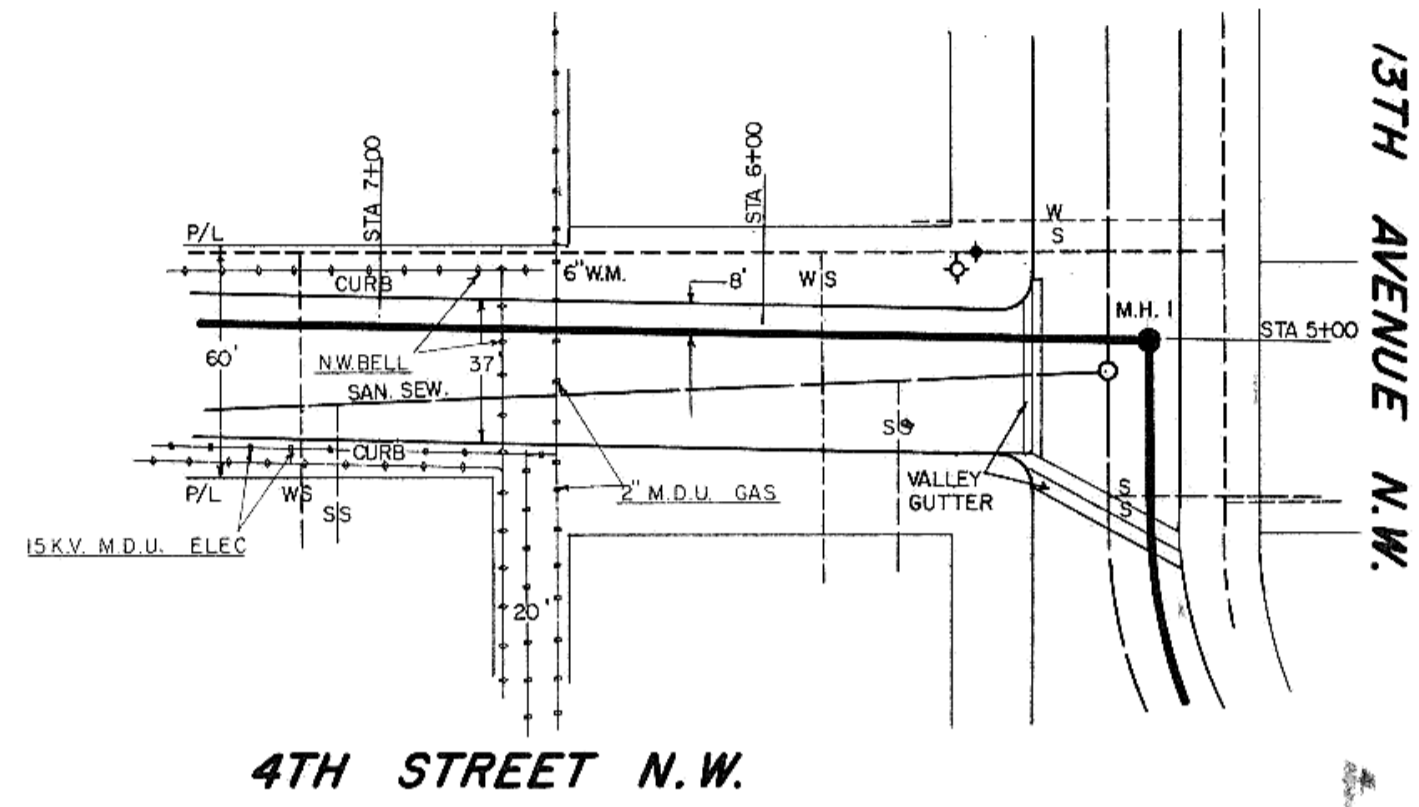
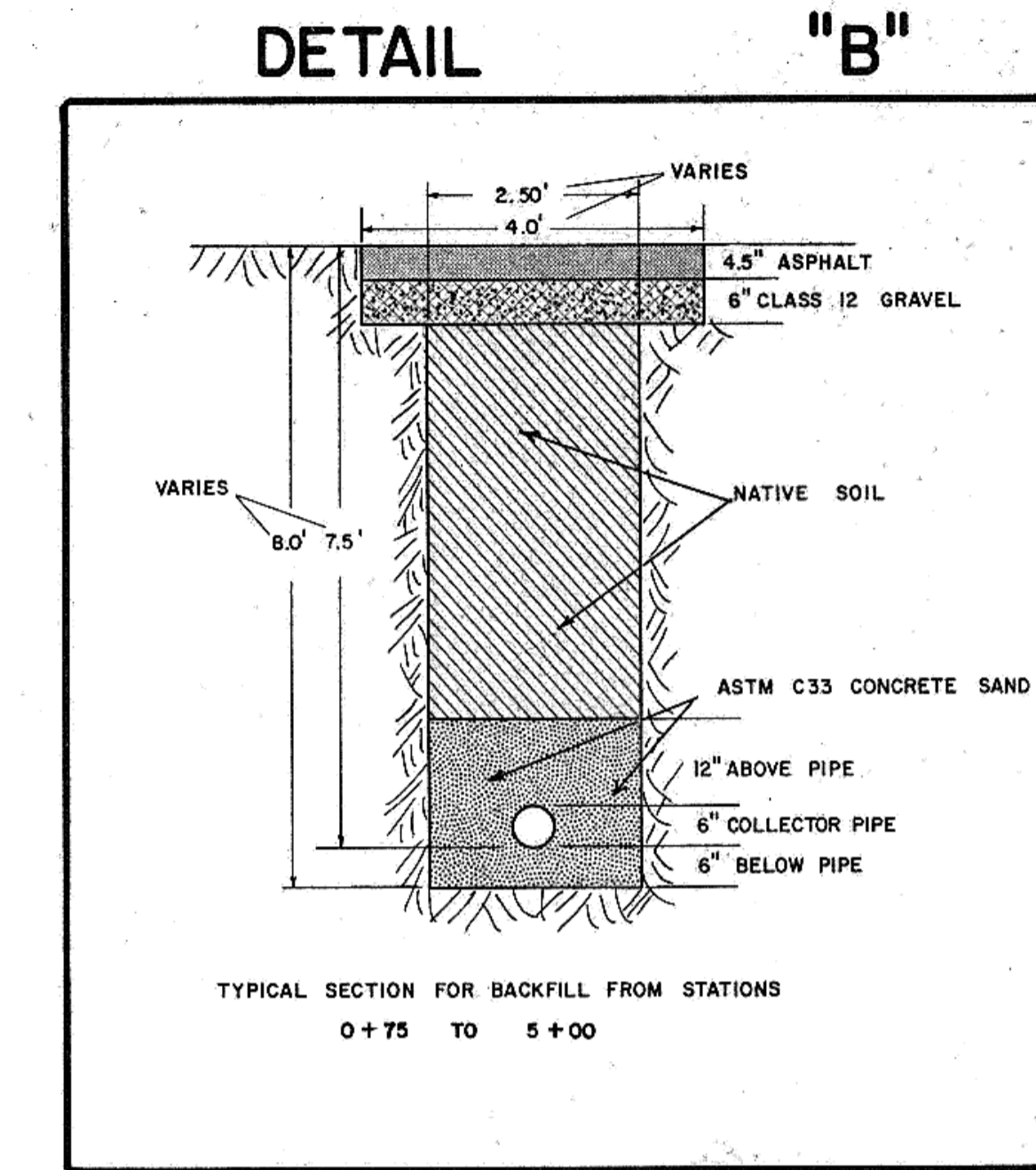


DATE	
BY	
PLAN	
NOTE BOOK	
NO.	
REVISIONS	
NO.	
DATE	
BY	
PLAN	
NOTE BOOK	
NO.	

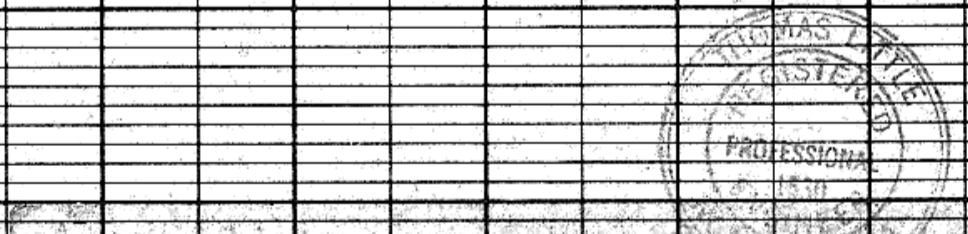
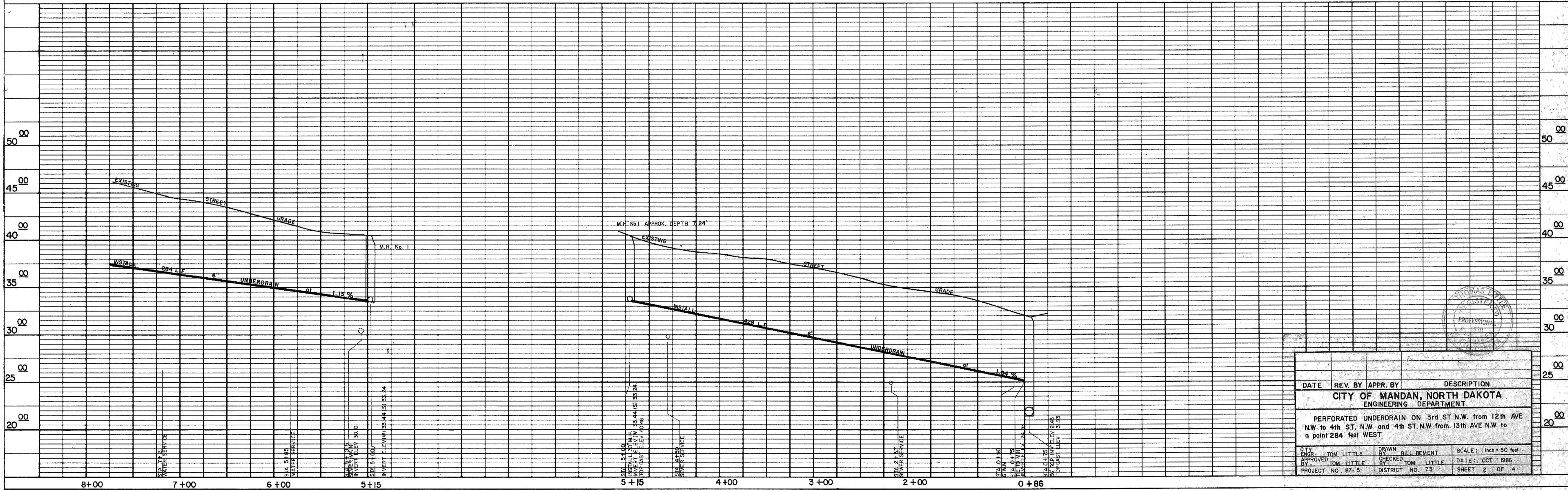


SCALE 1 inch = 50 feet

NOTE: Sewer service elevations are at SANITARY SEWER MAIN



DATE	
BY	
PROFILE	
NOTE BOOK	
NO.	
REVISIONS	
NO.	
DATE	
BY	
PROFILE	
NOTE BOOK	
NO.	



DATE	REV. BY	APPR. BY	DESCRIPTION
CITY OF MANDAN, NORTH DAKOTA ENGINEERING DEPARTMENT			
PERFORATED UNDERDRAIN ON 3rd ST. N.W. FROM 12th AVE N.W. TO 4th ST. N.W. AND 4th ST. N.W. FROM 13th AVE N.W. TO A POINT 284 FEET WEST			
CITY ENGR. TOM LITTLE	BY: BILL BEMENT	CHECKED: TOM LITTLE	DATE: OCT 1986
APPROVED BY: TOM LITTLE	CHECKED: TOM LITTLE	DATE: OCT 1986	PROJECT NO. 87-5
DRAWN: BILL BEMENT		SCALE: 1 inch = 50 feet	
PROJECT NO. 87-5		DISTRICT NO. 73 SHEET 2 OF 4	

PROJECT 87-5