

LONGSPUR TRAIL S. E.

AREA I

☉ CURVE DATA

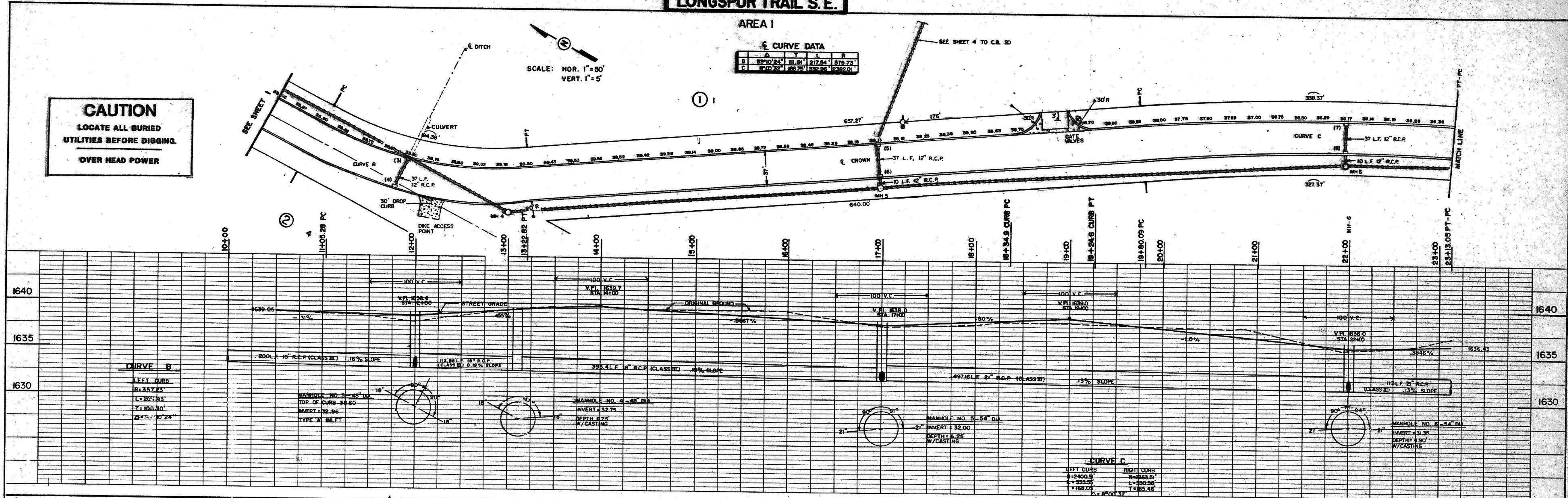
Curve	A	B	C	D	E
B	33°10'24"	111.91'	217.54'	375.73'	
C	8°40'52"	105.71'	132.25'	132.25'	

SCALE: HOR. 1"=50'
VERT. 1"=5'

CAUTION
LOCATE ALL BURIED UTILITIES BEFORE DIGGING.
OVER HEAD POWER

DATE: 1-9-13
BY: [Signature]
REVISIONS:
NO. 1: AS-BUILT CORRECTIONS
NO. 2: ALIGNMENT CHECKED
NO. 3: UTILITY NOTATIONS CHECKED

DATE: [Blank]
BY: [Blank]
REVISIONS:
NO. 1: [Blank]
NO. 2: [Blank]
NO. 3: [Blank]



CURVE B

LEFT CURB	R=357.23'
RIGHT CURB	R=357.23'
LC BEG. STA.	11+405.28 PC
LC END STA.	12+405.28 PC
LC BEG. CHORD BEARING	Δ 115° 30' 24"

CURVE C

LEFT CURB	R=2400.0'
RIGHT CURB	R=2400.0'
LC BEG. STA.	17+000.00
LC END STA.	18+400.00
LC BEG. CHORD BEARING	Δ 168° 05' 32"

LONGSPUR TRAIL S. E.

AREA I

SCALE: HOR. 1"=50'
VERT. 1"=5'

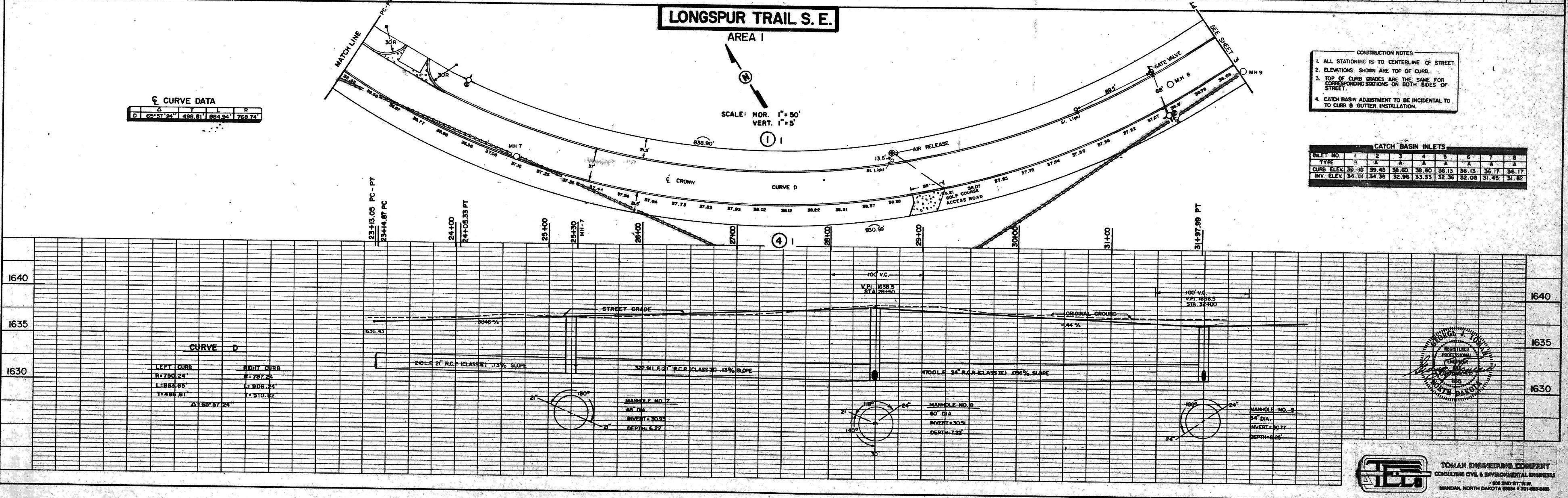
- CONSTRUCTION NOTES
1. ALL STATIONING IS TO CENTERLINE OF STREET.
 2. ELEVATIONS SHOWN ARE TOP OF CURB.
 3. TOP OF CURB GRADES ARE THE SAME FOR CORRESPONDING STATIONS ON BOTH SIDES OF STREET.
 4. CATCH BASIN ADJUSTMENT TO BE INCIDENTAL TO CURB & GUTTER INSTALLATION.

☉ CURVE DATA

Curve	A	B	C	D
D	65°57'24"	498.81'	884.94'	758.74'

CATCH BASIN INLETS

INLET NO.	1	2	3	4	5	6	7	8
CURB ELEV.	36.33	39.48	36.60	38.60	38.13	38.13	36.17	35.11
INV. ELEV.	34.01	34.38	32.96	33.33	32.36	32.08	31.45	31.82



CURVE D

LEFT CURB	R=750.24'
RIGHT CURB	R=750.24'
LC BEG. STA.	23+13.05 PC-PT
LC END STA.	24+13.05 PC-PT
LC BEG. CHORD BEARING	Δ 159° 57' 24"



TOMLIN ENGINEERING COMPANY
CONSULTING CIVIL & ENVIRONMENTAL ENGINEERS
1005 5TH ST. S.W.
BANDER, NORTH DAKOTA 58504 • 701-885-9885