

Date JUL 7, 89

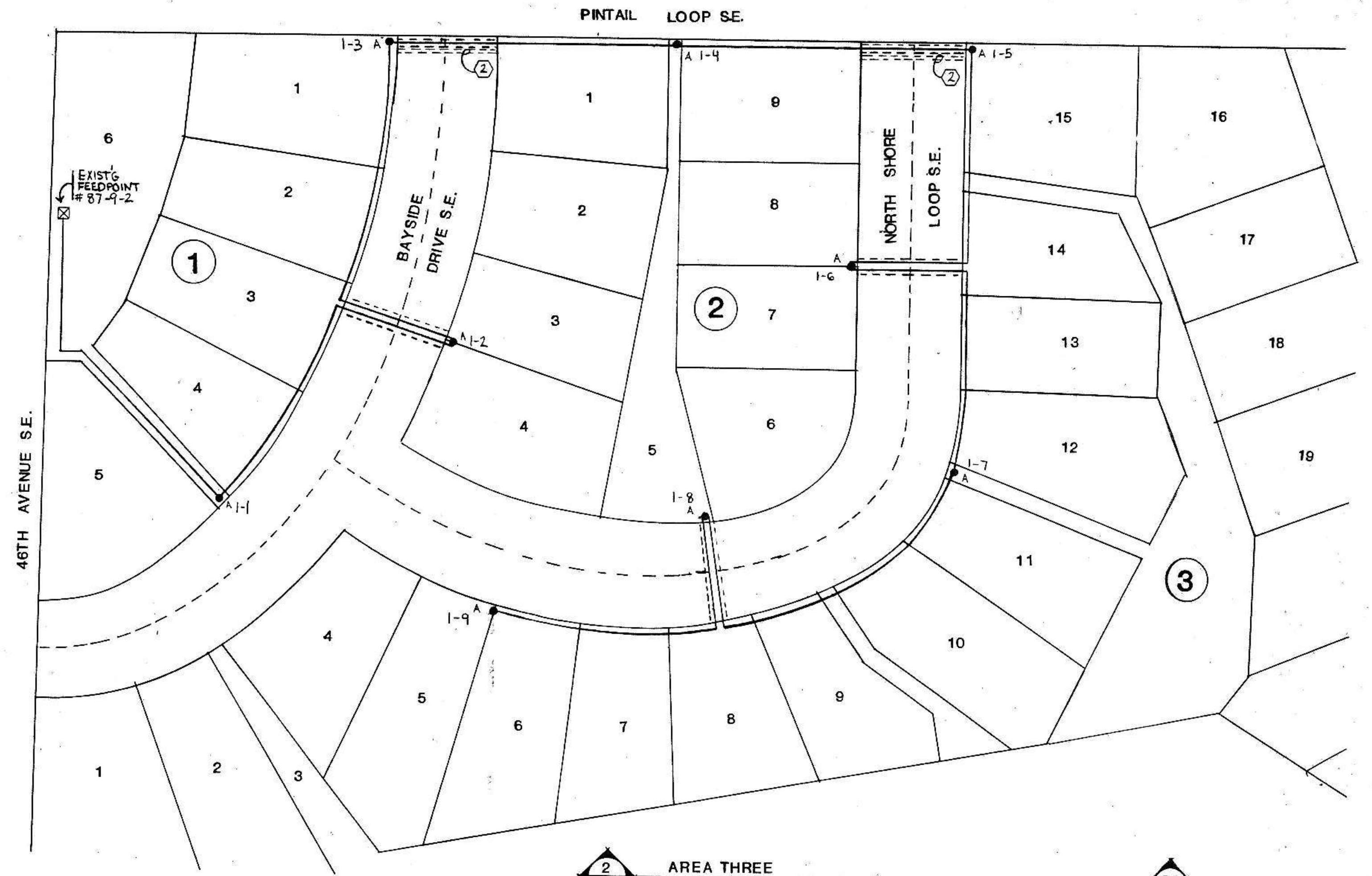
Drawn By MED  
Checked By GRD  
Job No. M 664

PRAIRIE ENGINEERING, P.C.  
PROFESSIONAL CONSULTING ENGINEERS  
MINOT AND BISMARCK, NORTH DAKOTA

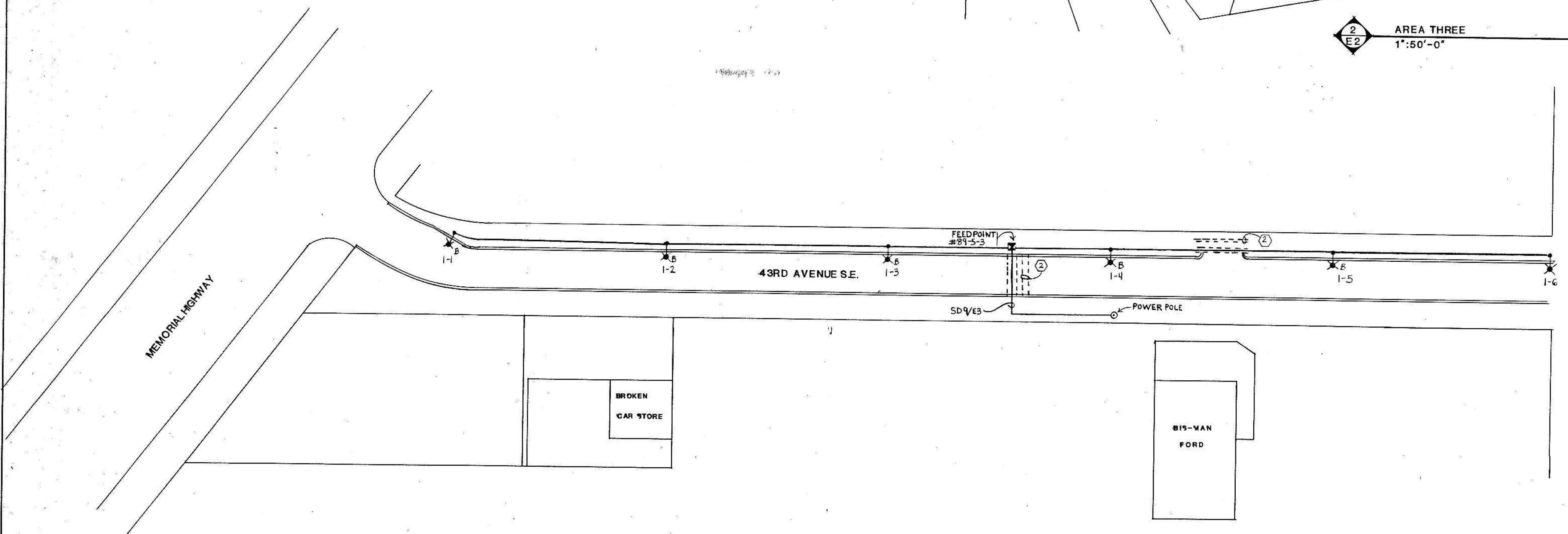
STREET IMPROVEMENT  
DISTRICT NO. 81  
MANDAN NORTH DAKOTA

AREAS NO. 2&3  
2-4 8RD AVENUE S.E.  
3-MARINA BAY

Sheet  
of 3



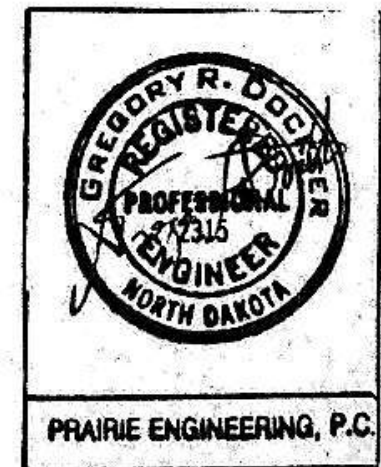
AREA THREE  
1"=50'-0"



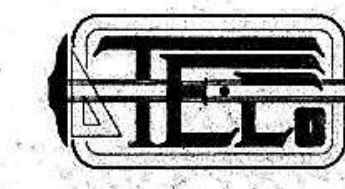
AREA TWO  
1"=50'-0"

NOTES: DETAILS 1/E2 & 2/E2

- ALL LOT AND STREET LAYOUT INFORMATION OBTAINED FROM CITY PLATS. LOT DIMENSIONS SHOWN ARE USED IN LOCATING STREET LIGHTS ONLY. VERIFY FOR OTHER USES.
- PROVIDE EMPTY CONDUIT FOR FUTURE USE.



PRAIRIE ENGINEERING, P.C.



TOMAN ENGINEERING COMPANY  
CONSULTING CIVIL & ENVIRONMENTAL ENGINEERS  
806 2ND ST. N.W.  
MANDAN, NORTH DAKOTA 58554 • 701-663-6463