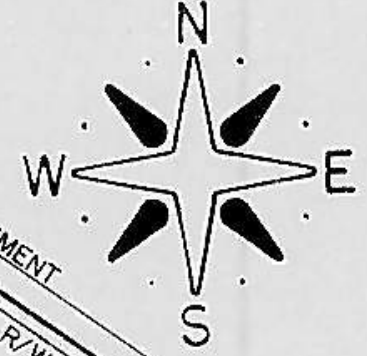


MANDAN INDUSTRIAL PARK



LEGEND

- WATERMAIN
- GATE VALVE
- HYDRANT
- 1/2" COPPER SERVICE LINE
- MANHOLE

- 1 to 2 = 11.3'
- 1 to 3 = 9.3'
- 2 to 3 = 18.7'
- 2 to 4 = 69.7'
- 3 to 4 = 57.1'

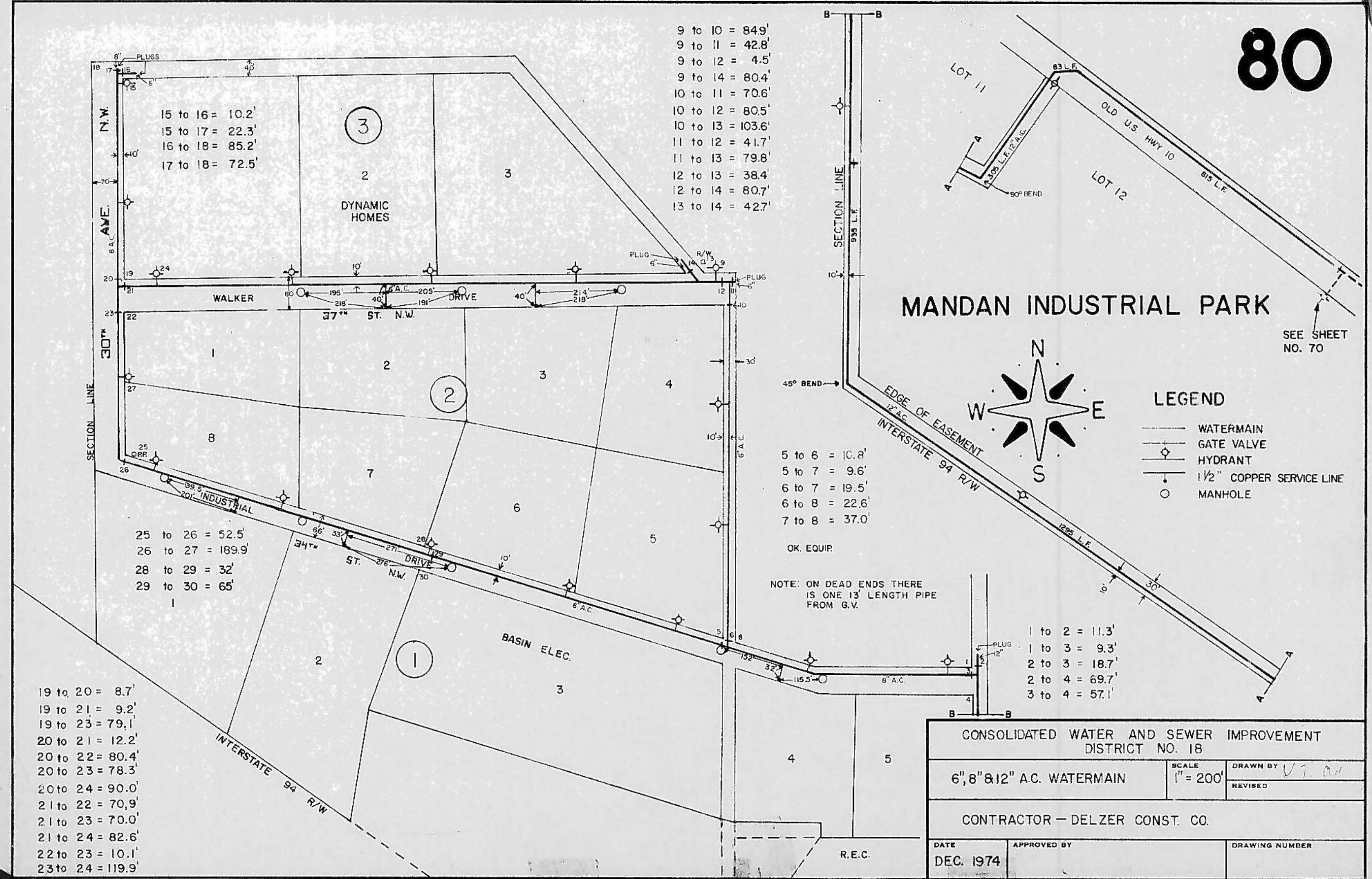
- 5 to 6 = 10.8'
- 5 to 7 = 9.6'
- 6 to 7 = 19.5'
- 6 to 8 = 22.6'
- 7 to 8 = 37.0'

- 9 to 10 = 84.9'
- 9 to 11 = 42.8'
- 9 to 12 = 4.5'
- 9 to 14 = 80.4'
- 10 to 11 = 70.6'
- 10 to 12 = 80.5'
- 10 to 13 = 103.6'
- 11 to 12 = 41.7'
- 11 to 13 = 79.8'
- 12 to 13 = 38.4'
- 12 to 14 = 80.7'
- 13 to 14 = 42.7'

- 19 to 20 = 8.7'
- 19 to 21 = 9.2'
- 19 to 23 = 79.1'
- 20 to 21 = 12.2'
- 20 to 22 = 80.4'
- 20 to 23 = 78.3'
- 20 to 24 = 90.0'
- 21 to 22 = 70.9'
- 21 to 23 = 70.0'
- 21 to 24 = 82.6'
- 22 to 23 = 10.1'
- 23 to 24 = 119.9'

- 25 to 26 = 52.5'
- 26 to 27 = 189.9'
- 28 to 29 = 32'
- 29 to 30 = 65'

- 15 to 16 = 10.2'
- 15 to 17 = 22.3'
- 16 to 18 = 85.2'
- 17 to 18 = 72.5'



NOTE: ON DEAD ENDS THERE IS ONE 13' LENGTH PIPE FROM G.V.

OK. EQUIP.

CONSOLIDATED WATER AND SEWER IMPROVEMENT DISTRICT NO. 18		
6", 8" & 12" A.C. WATERMAIN	SCALE 1" = 200'	DRAWN BY V.T.M.
CONTRACTOR - DELZER CONST. CO.		
DATE DEC. 1974	APPROVED BY	DRAWING NUMBER