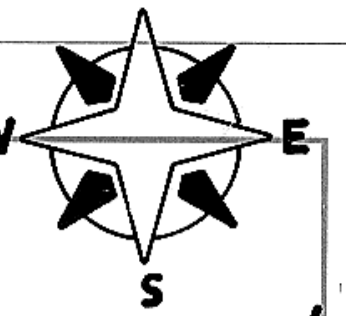
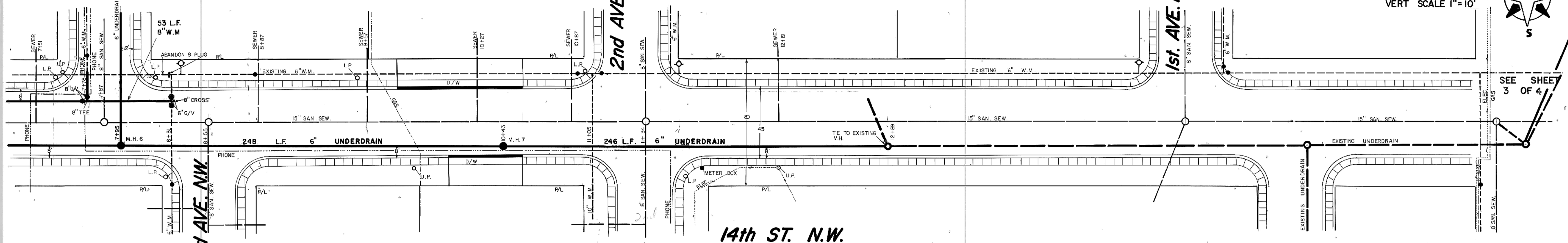


HORZ SCALE 1"=30'  
VERT SCALE 1"=10'



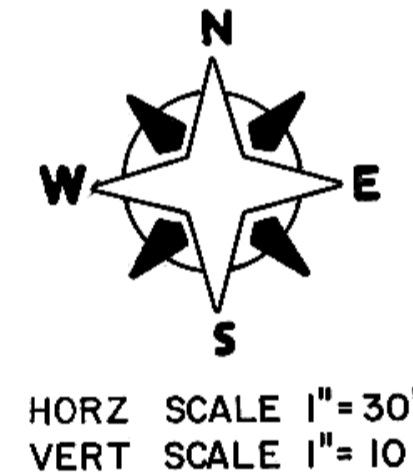
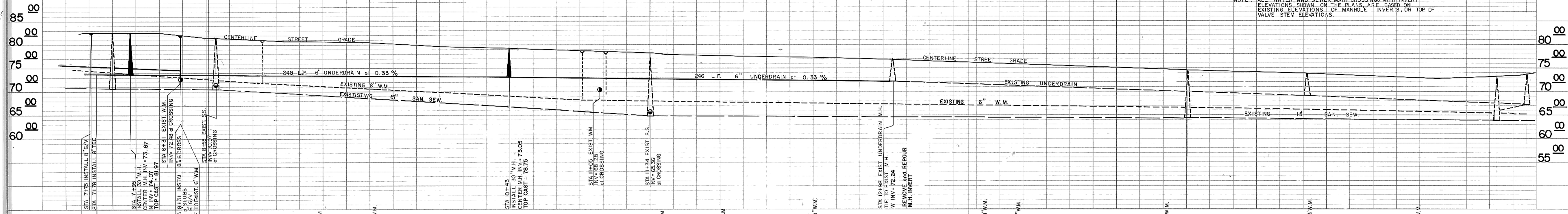
SEE SHEET 3 OF 4



SEE SHEET 3 OF 4

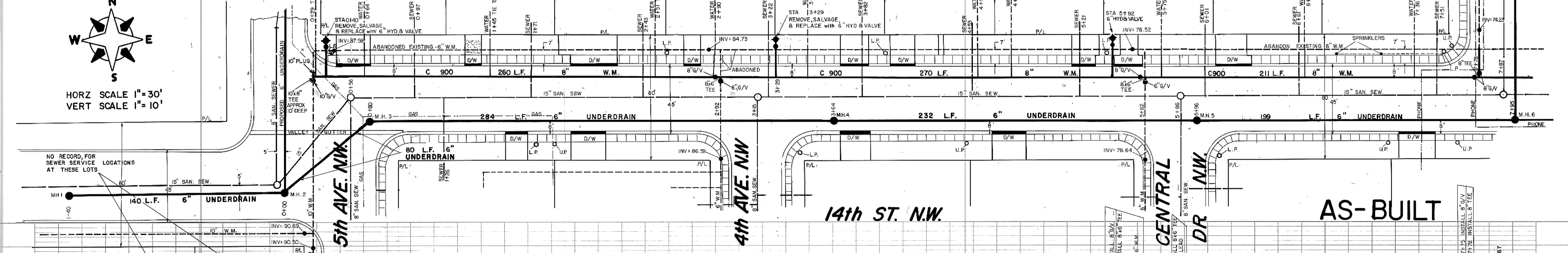
DATE	
BY	
REVISION	
NO.	
PLAN	DESIGNED
NOTE BOOK	CHECKED
	BY
	DATE

NOTE: ALL WATER AND SEWER MAIN CROSSINGS WITH INVERT ELEVATIONS SHOWN ON THE PLANS ARE BASED ON EXISTING ELEVATIONS OF MANHOLE INVERTS, OR TOP OF VALVE STEM ELEVATIONS.



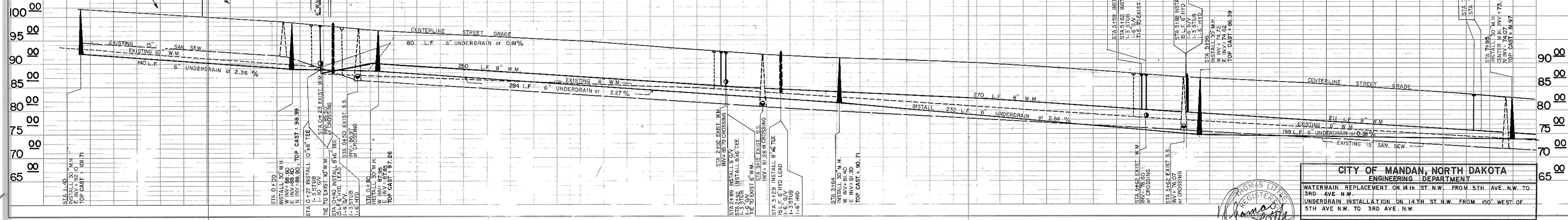
HORZ SCALE 1"=30'  
VERT SCALE 1"=10'

SEE SHEET 3 OF 4



AS-BUILT

DATE	
BY	
REVISION	
NO.	
PROFILE	SURVEYED
NOTE BOOK	CHECKED
	BY
	DATE



**CITY OF MANDAN, NORTH DAKOTA**  
ENGINEERING DEPARTMENT

WATERMAIN REPLACEMENT ON 14th ST. N.W. FROM 5th AVE. N.W. TO 3rd AVE. N.W.  
UNDERDRAIN INSTALLATION ON 14th ST. N.W. FROM 150' WEST OF 5th AVE. N.W. TO 3rd AVE. N.W.

CITY	TOM LITTLE	DRAWN	BILL BEMENT	SCALE:	1"=30'
APPROVED	<i>[Signature]</i>	CHECKED	<i>[Signature]</i>	DATE:	4-90
PROJECT NO.	90-10	DISTRICT NO.	84	SHEET	2 OF 4