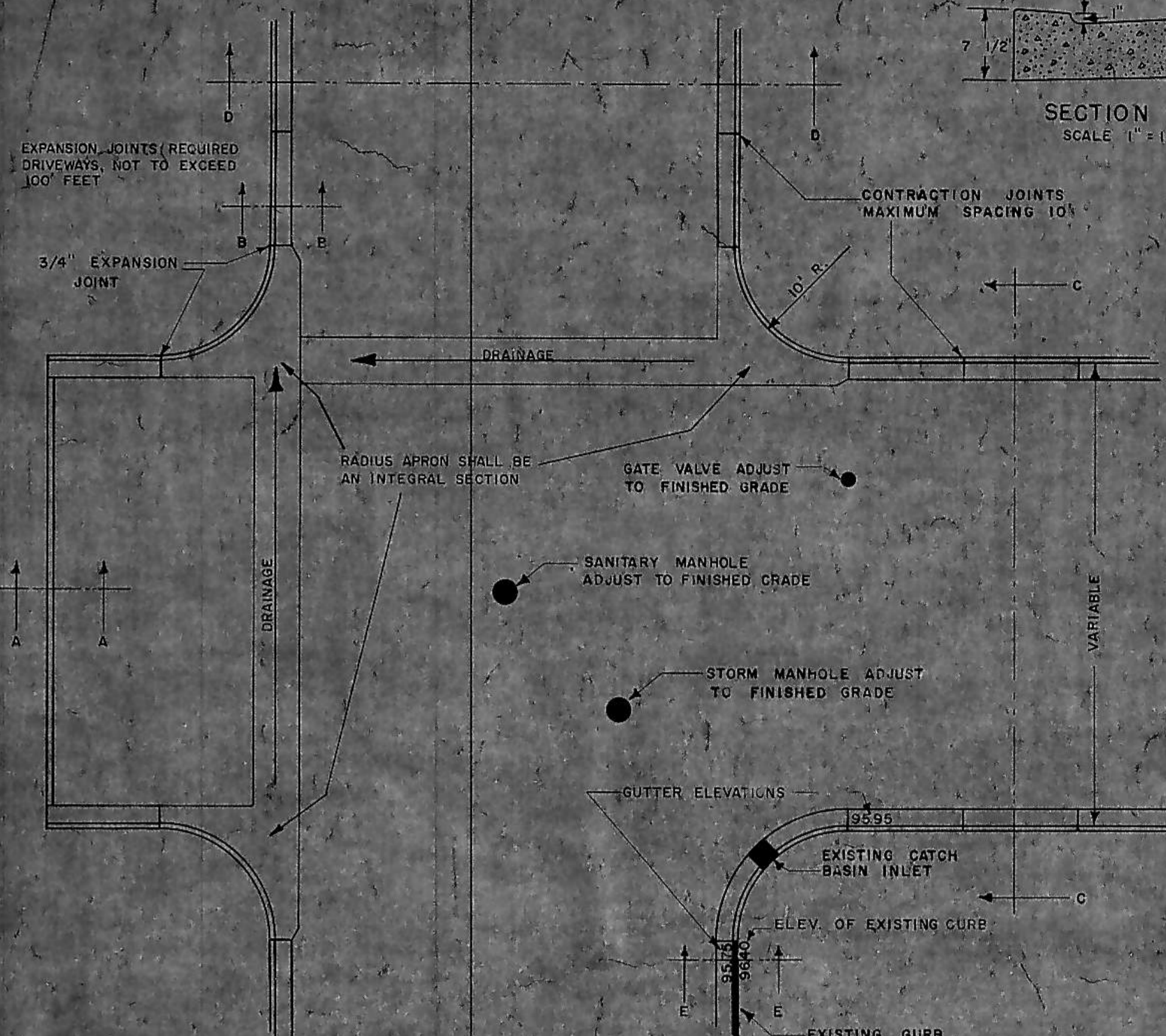


NOTE: INSTALL REINFORCED CONCRETE GUTTER AS SHOWN ON PLANS AND PROFILE. DRAINAGE MAY BE REQUIRED ACROSS ASPHALT SURFACING

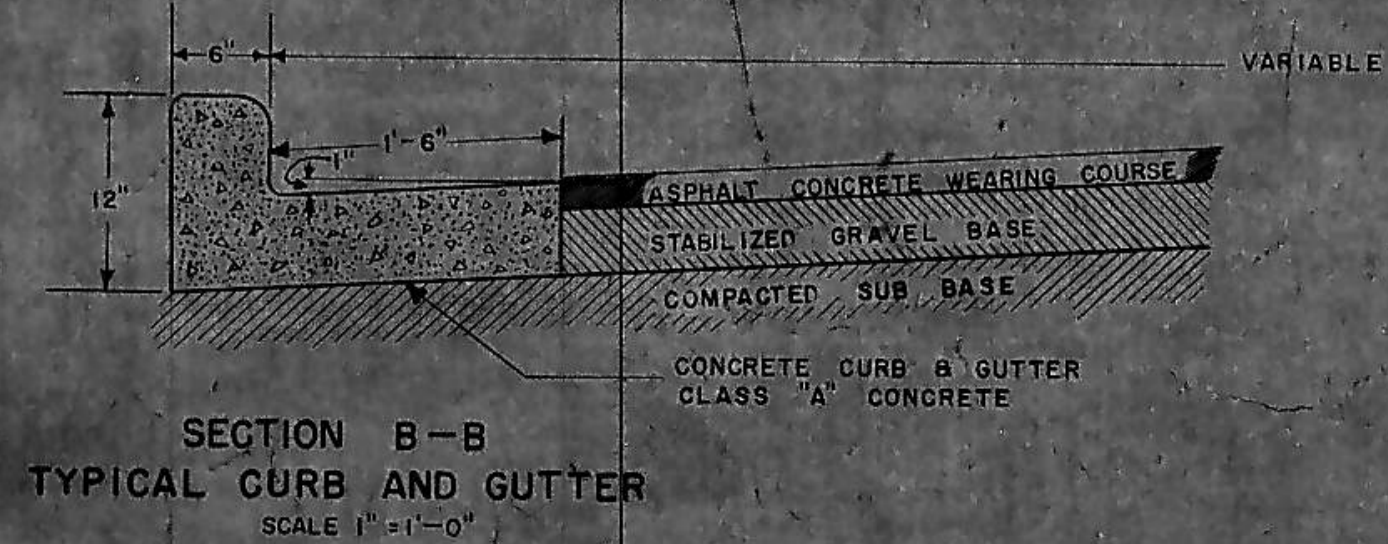
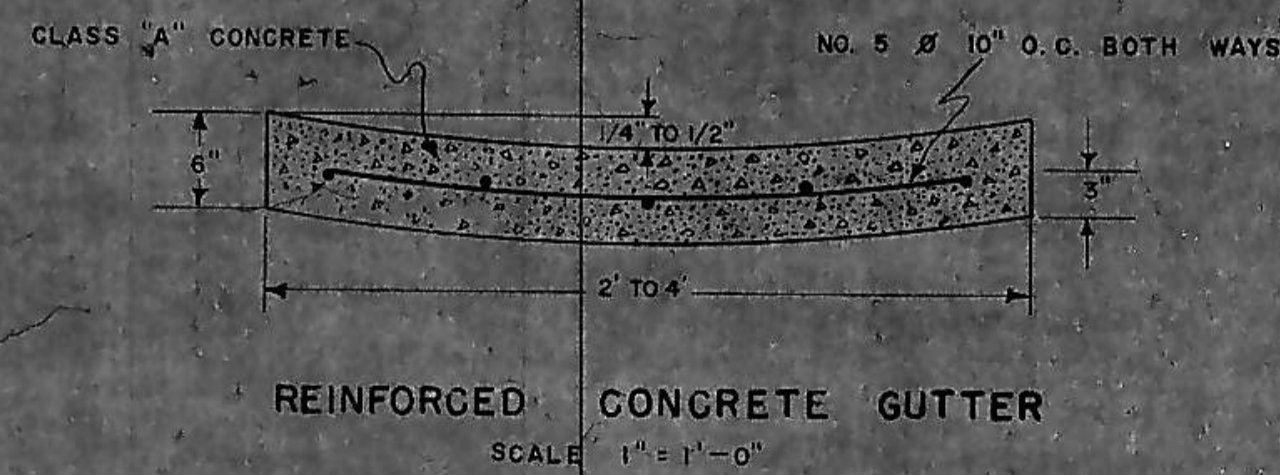


TYPICAL STREET INTERSECTION PLAN
SCALE 1" = 10'

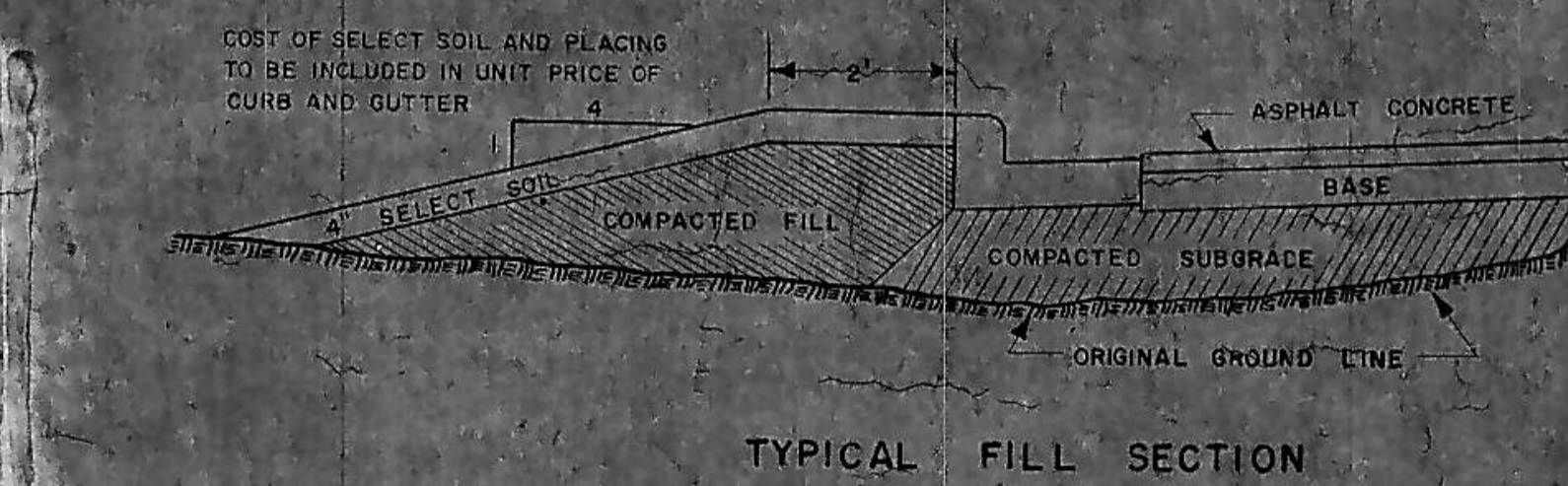
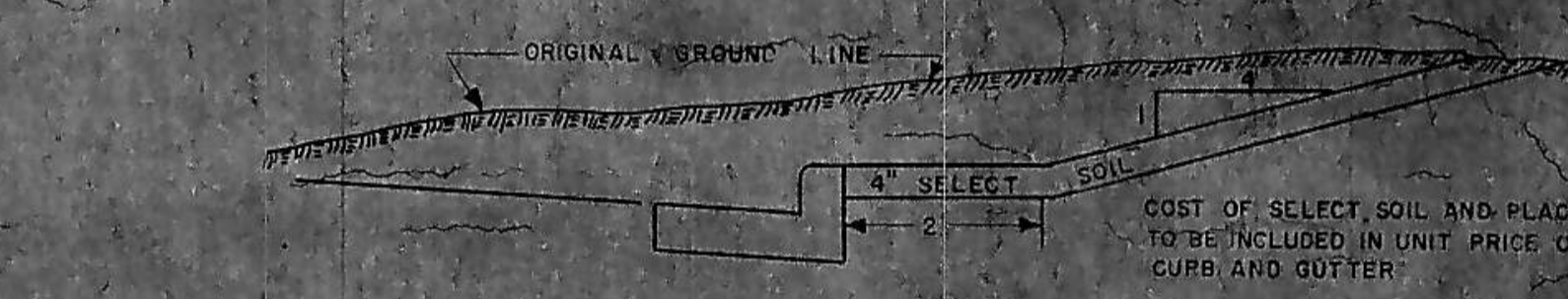
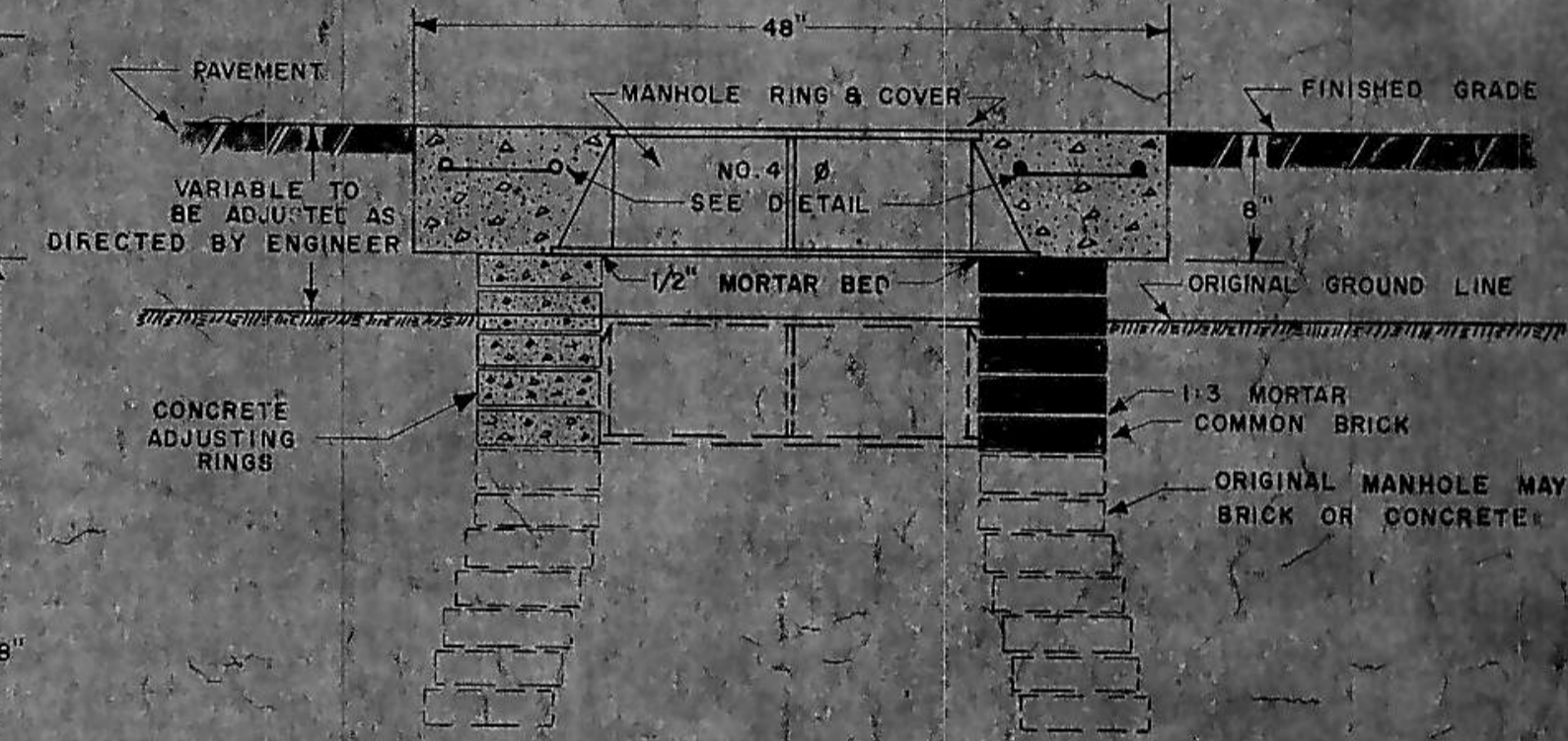
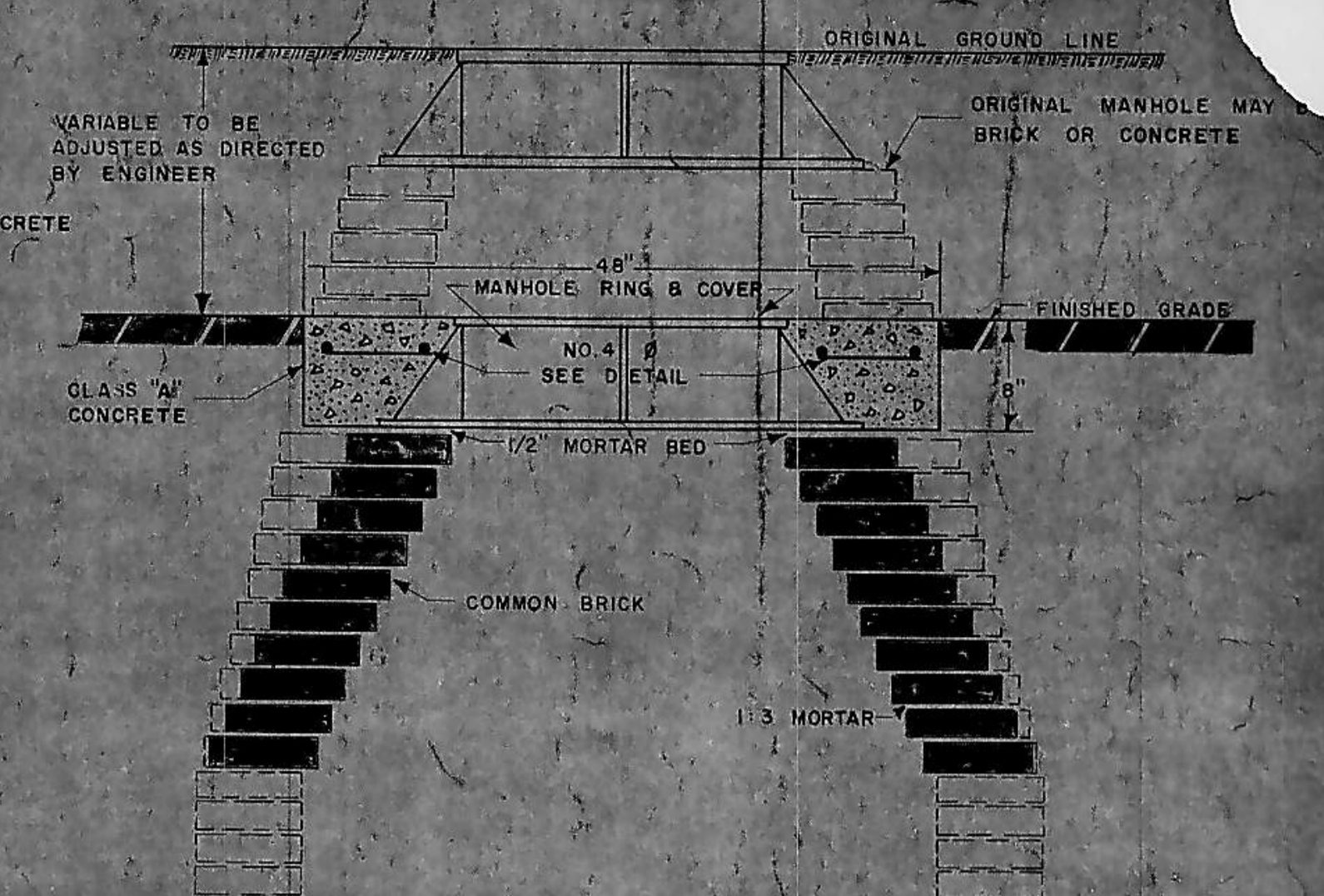
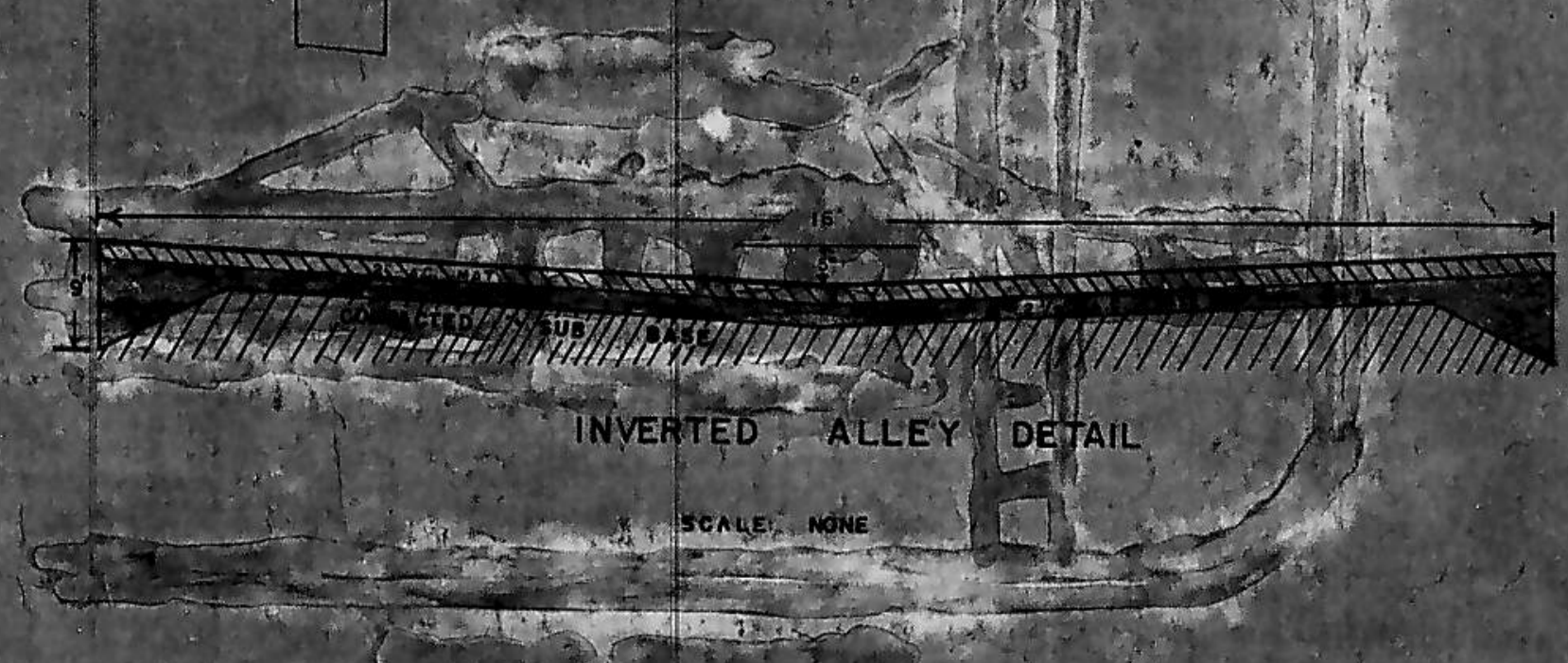
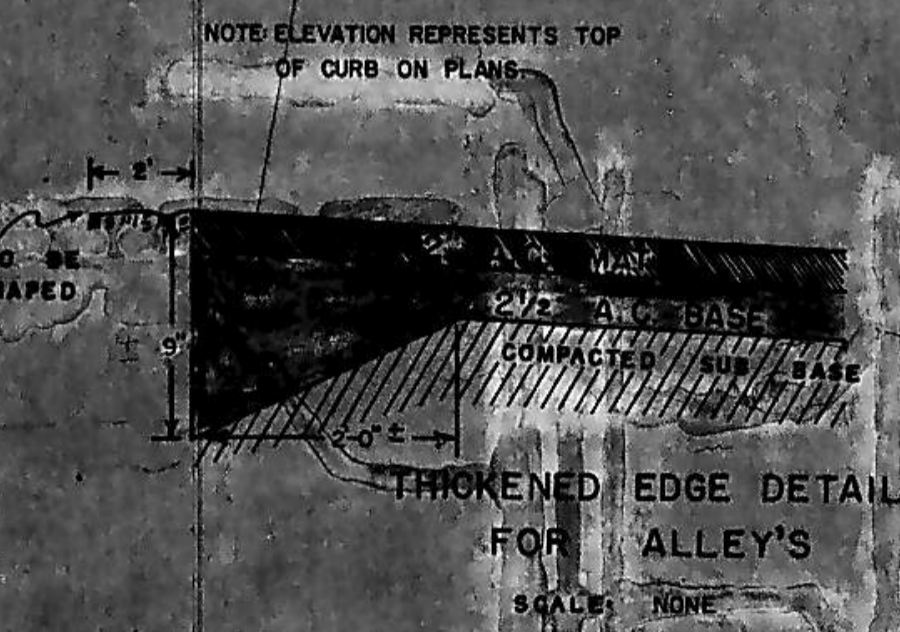
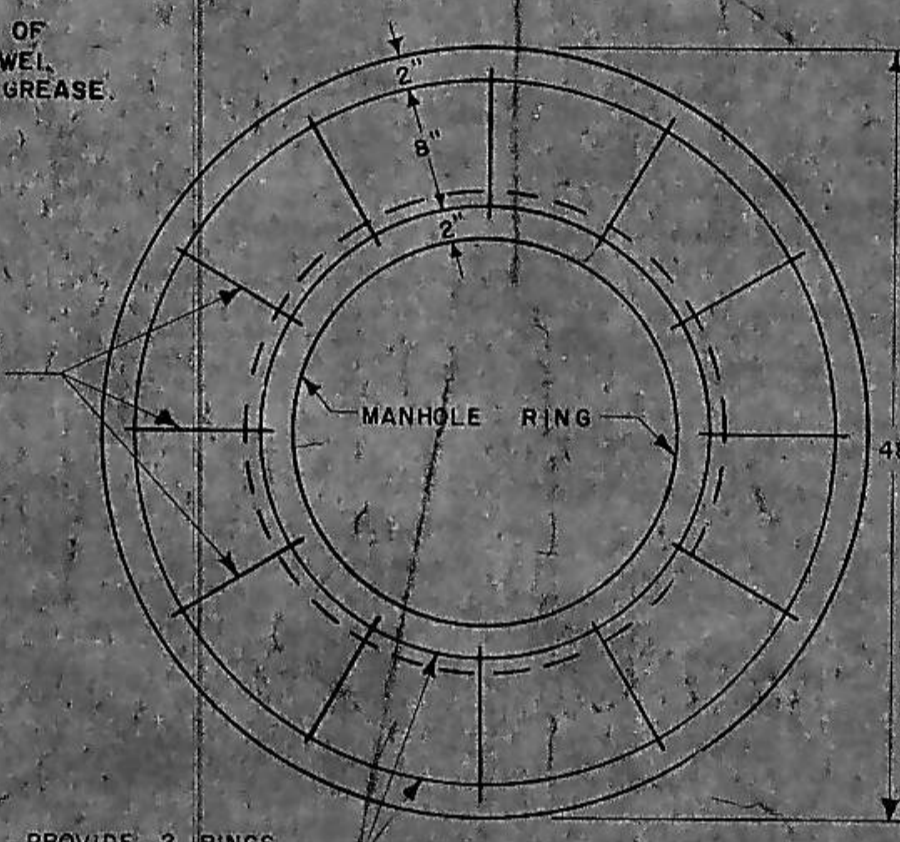
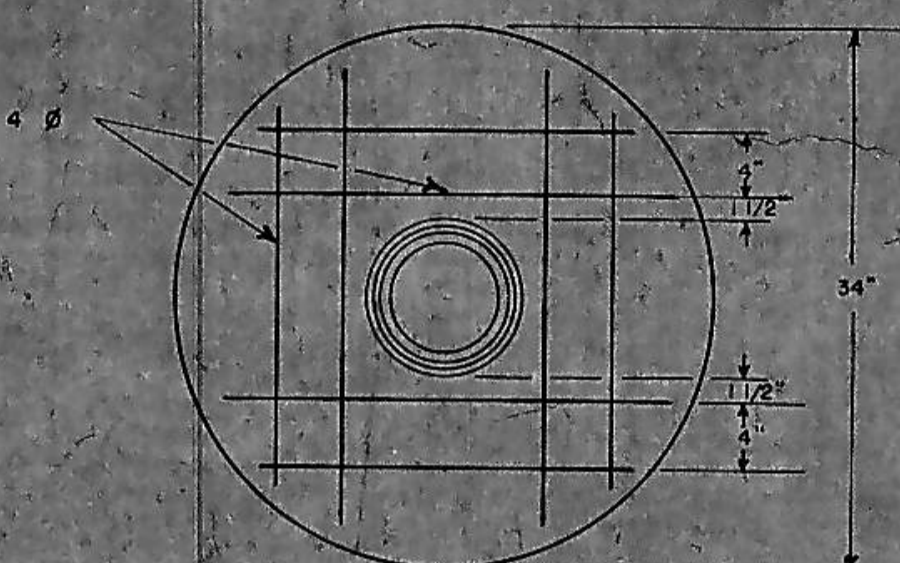
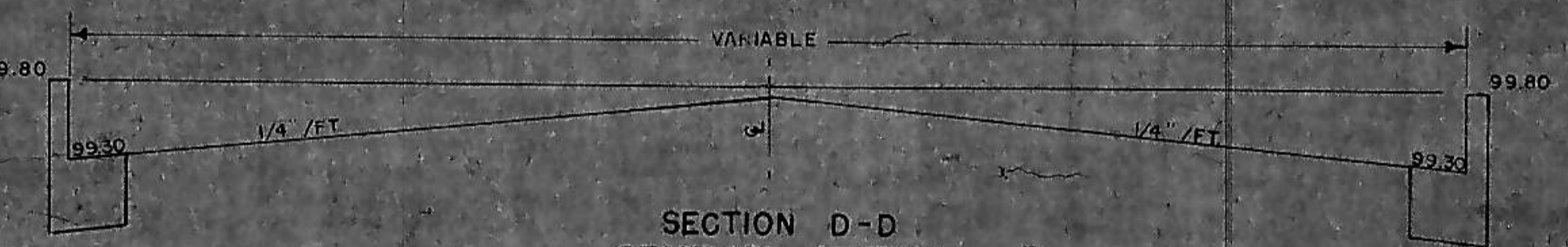
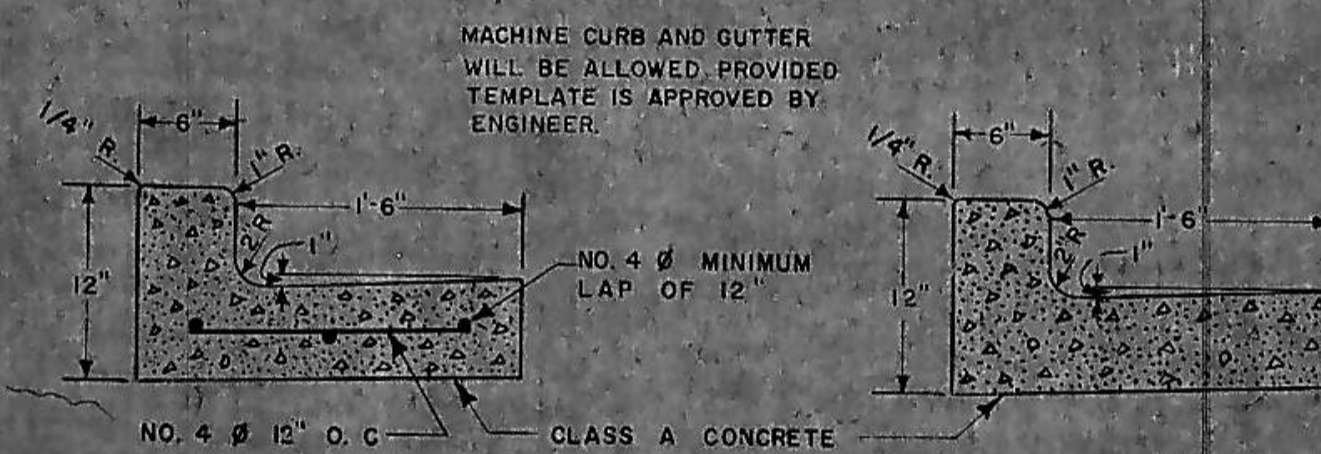
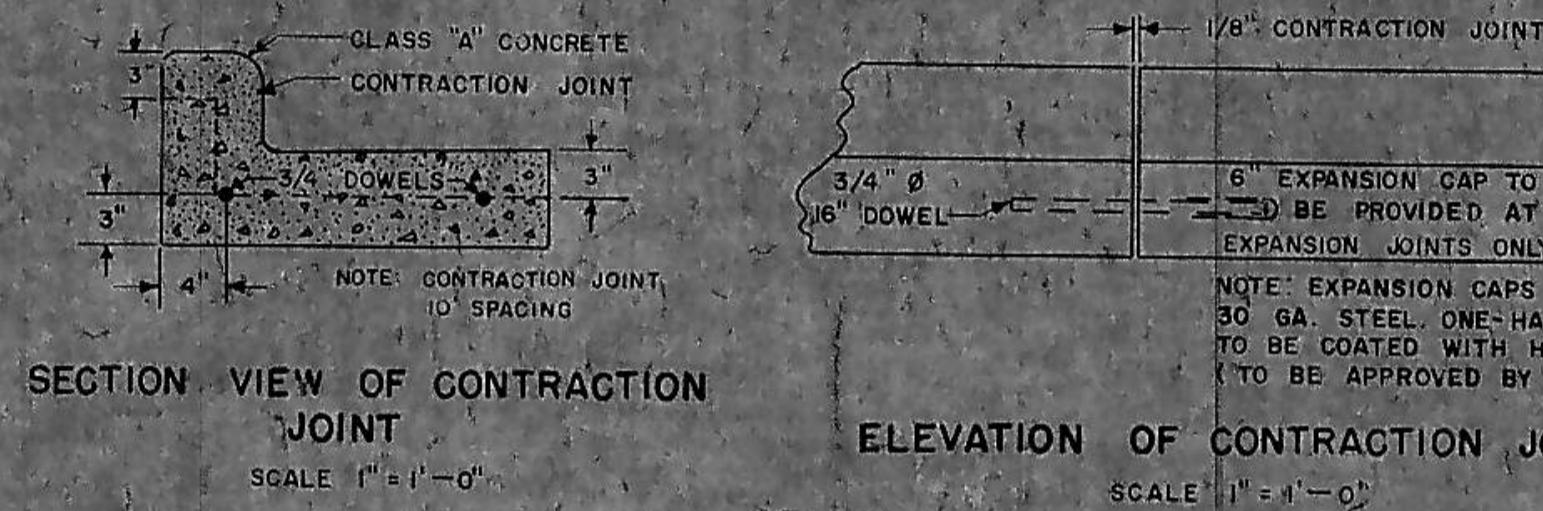
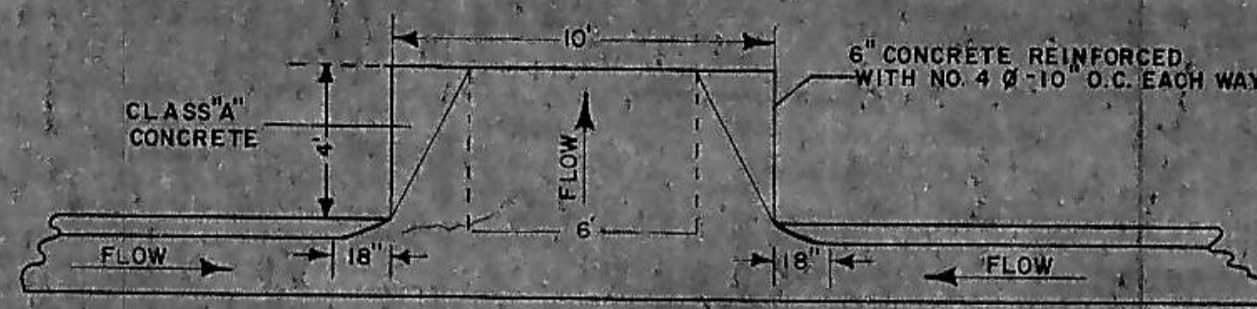
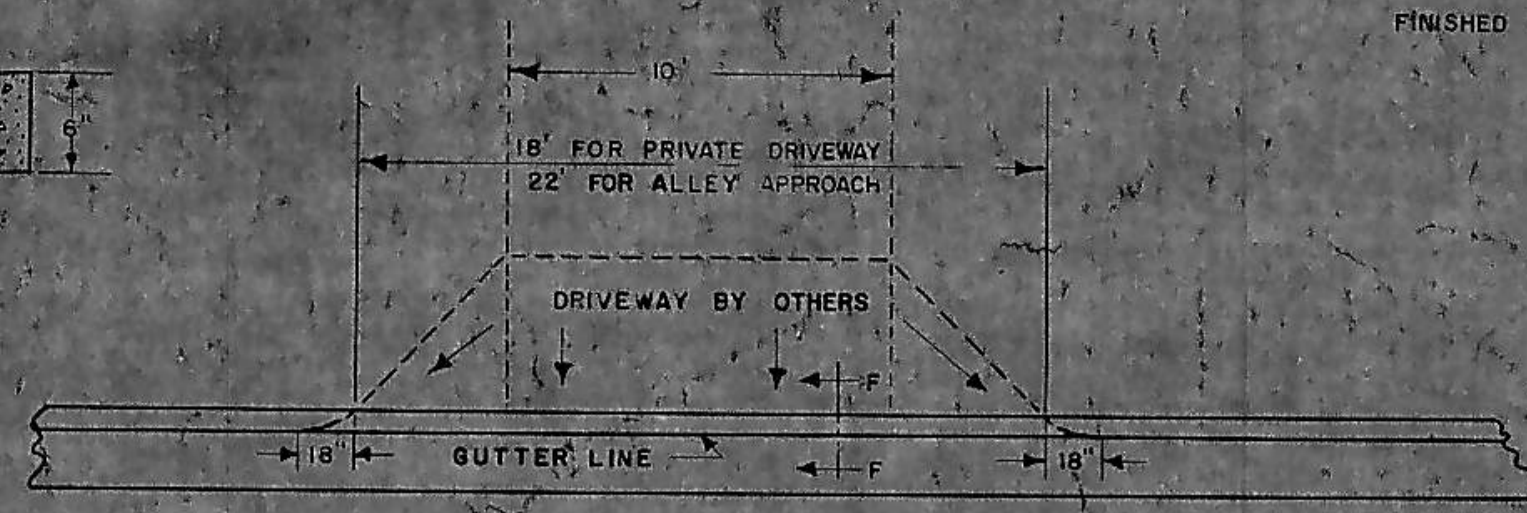
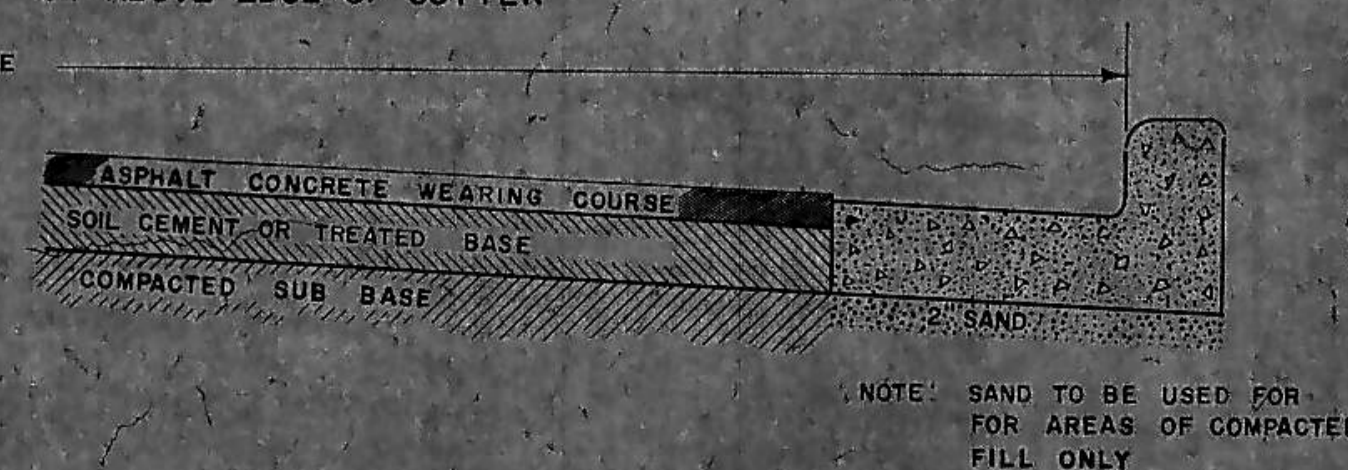


NOTE: A 3/2" BASE IS REQUIRED ON INDEPENDENCE, SUNSET, & TENA VALLEE
A 2 1/2" BASE IS REQUIRED ON CONCORD, LEXINGTON, VALLEY FORGE, & FREEDOM ROAD

NOTE: TEMPLATE FOR CONCRETE GUTTER SECTION MAY VARY AS DIRECTED BY THE ENGINEER. PROVIDE TEMPLATE TO CONSTRUCT CONTRACTION JOINT 1/8" WIDE AND 3/8" DEEP AS SHOWN ON CURB AND GUTTER DETAILS



NOTE: FINISHED PAVEMENT TO BE 1/4" ABOVE EDGE OF GUTTER



Job: ST. IMP. DIST. NO 54

File No. Date: Revised:

Scale: DRAWN BY: CHECKED BY:

PAVING DETAILS
George J. Toman
R. P. E. No. 185
CONSULTING ENGINEER
Mandan, ND