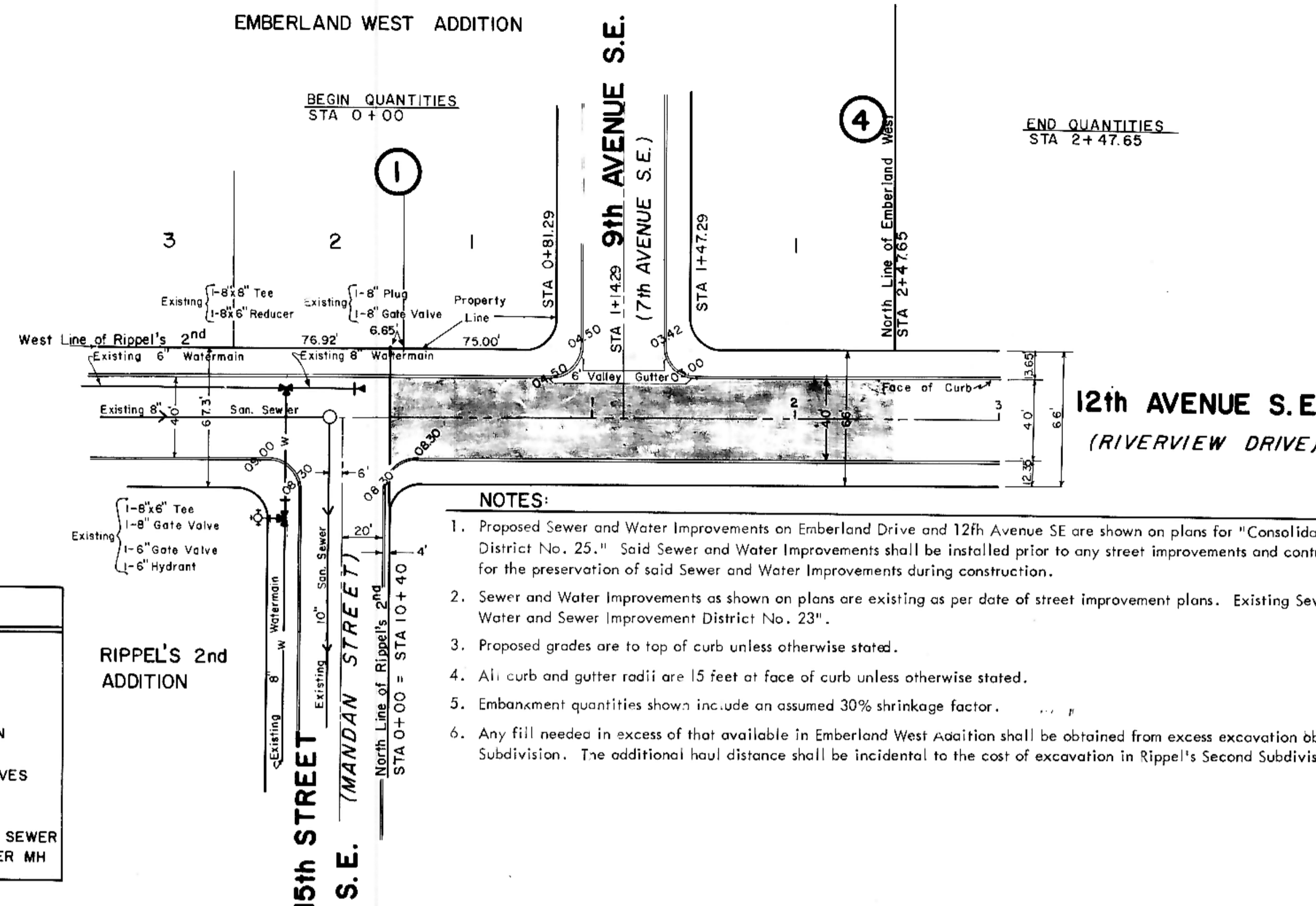
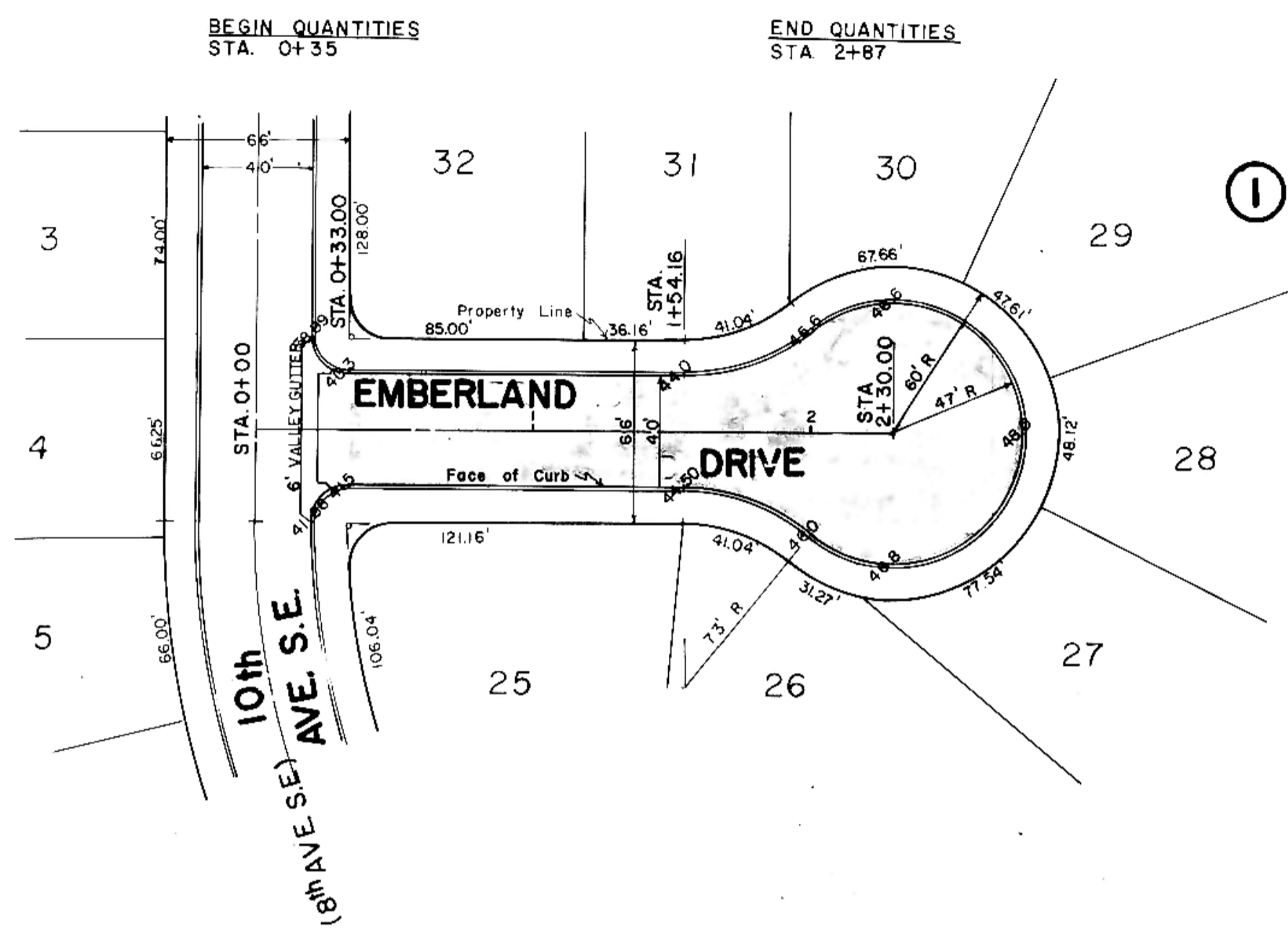


HORIZONTAL SCALE: 1"=50'
 VERTICAL SCALE: 1"=10'
 DATE: JULY, 1977



| LEGEND | |
|--------|----------------|
| --- | EXISTING |
| --- | 50' LT |
| --- | 50' RT |
| --- | EXISTING |
| --- | WATERMAIN |
| --- | HYDRANTS |
| --- | GATE VALVES |
| --- | TEE |
| --- | PLUG |
| --- | SANITARY SEWER |
| --- | SAN. SEWER MH |

- NOTES:**
- Proposed Sewer and Water Improvements on Emberland Drive and 12th Avenue SE are shown on plans for "Consolidated Sewer and Water Improvement District No. 25." Said Sewer and Water Improvements shall be installed prior to any street improvements and contractor shall be responsible for the preservation of said Sewer and Water Improvements during construction.
 - Sewer and Water Improvements as shown on plans are existing as per date of street improvement plans. Existing Sewer and Water as per "Consolidated Water and Sewer Improvement District No. 23".
 - Proposed grades are to top of curb unless otherwise stated.
 - All curb and gutter radii are 15 feet at face of curb unless otherwise stated.
 - Embankment quantities shown include an assumed 30% shrinkage factor.
 - Any fill needed in excess of that available in Emberland West Addition shall be obtained from excess excavation obtained from Rippel's Second Subdivision. The additional haul distance shall be incidental to the cost of excavation in Rippel's Second Subdivision.

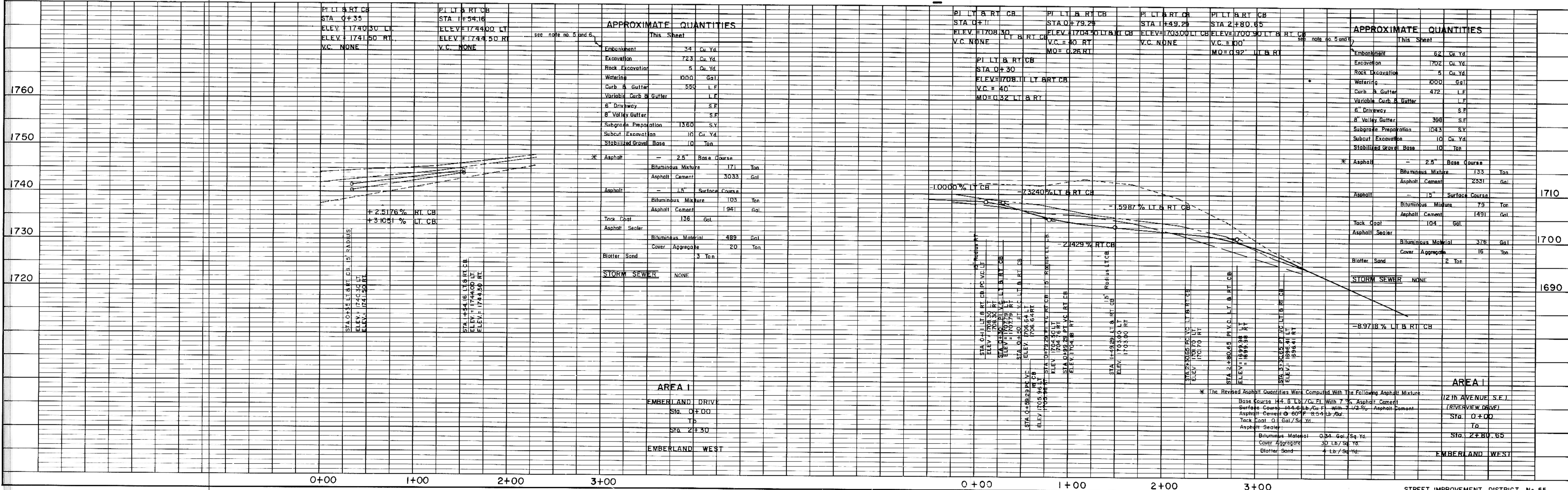


PLATE 1, PLAN-PROFILE
 KEUFEL & ESSER CO.
 48 7024 MADE IN U.S.A.

STREET IMPROVEMENT DISTRICT No. 55
 MANDAN, NORTH DAKOTA

SHEET No. 1-6
 DATE REVISED: February, 1978