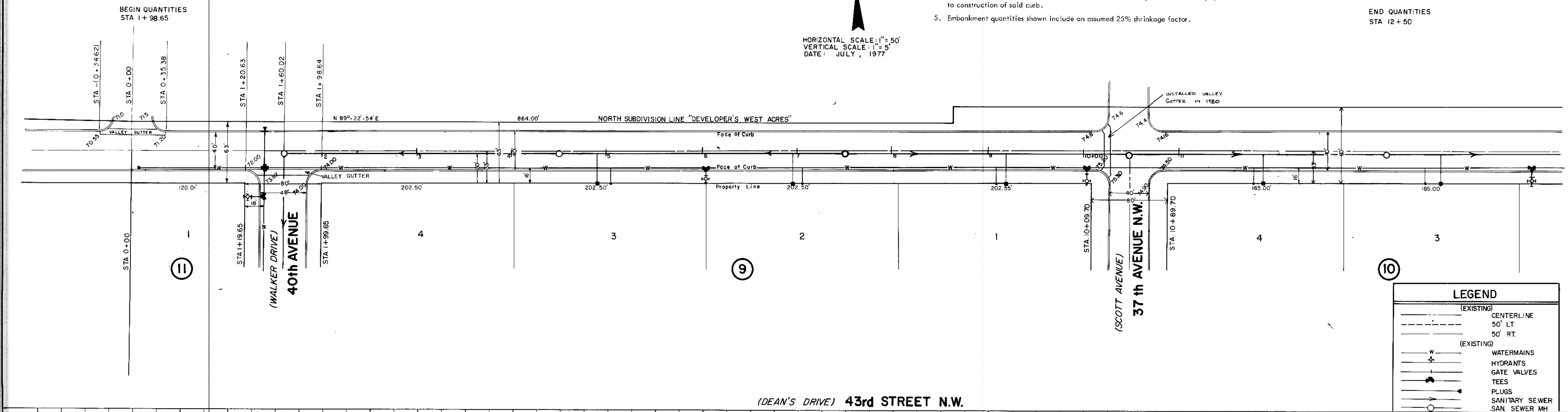


PLAN
 SURVIVED
 PHOTO
 NOTE BOOK
 NO.

PROFILE
 SURVIVED
 PHOTO
 NOTE BOOK
 NO.

- NOTES:
- Sewer and Water Improvements as shown on plans are existing as per date of street improvement plans. Existing Sewer and Water as per "Consolidated Water and Sewer Improvement District No. 24."
 - All curb and gutter radii are 15 feet at face of curb unless otherwise stated.
 - Proposed grades are to top of curb unless otherwise stated.
 - City Engineer shall confirm location of variable curb and gutter for driveways prior to construction of said curb.
 - Embankment quantities shown include an assumed 25% shrinkage factor.

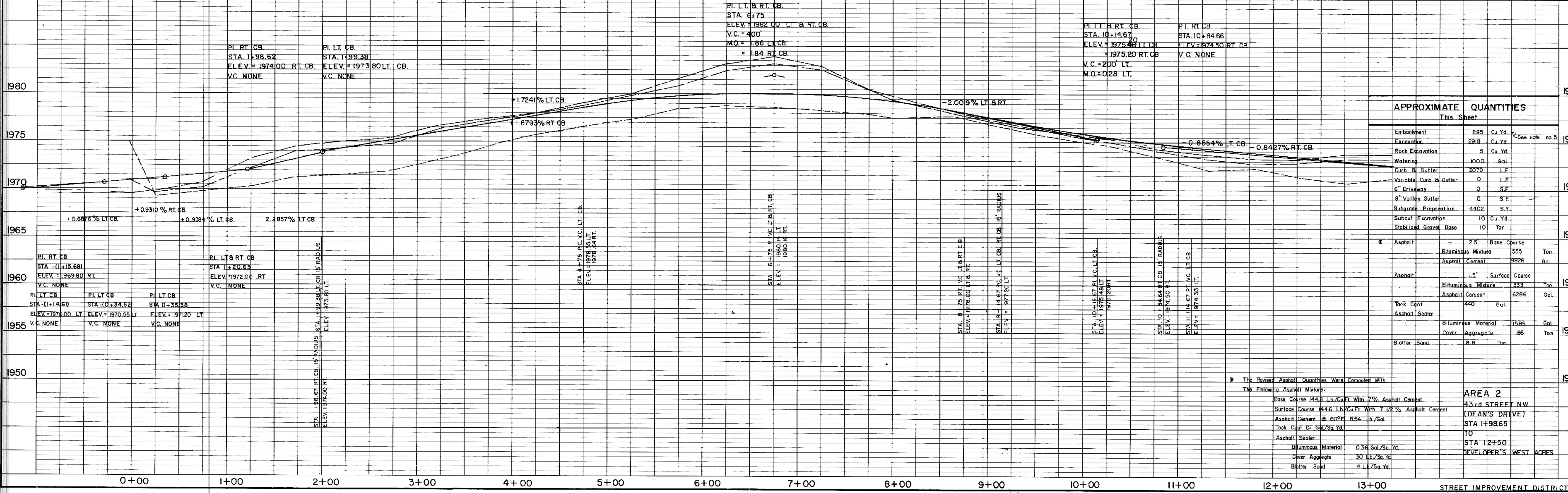
HORIZONTAL SCALE: 1" = 50'
 VERTICAL SCALE: 1" = 5'
 DATE: JULY, 1977



END QUANTITIES
 STA 12+50

LEGEND

(---)	(EXISTING) CENTERLINE
(---)	50' LT.
(---)	50' RT.
(---)	(EXISTING) WATERMAINS
(---)	HYDRANTS
(---)	GATE VALVES
(---)	TEES
(---)	PLUGS
(---)	SANITARY SEWER
(---)	SAN SEWER MH



APPROXIMATE QUANTITIES
 This Sheet

Item	Quantity	Unit
Embankment	895	Cu. Yd.
Excavation	2918	Cu. Yd.
Rock Excavation	5	Cu. Yd.
Watering	1000	Gal.
Curb & Gutter	2079	L.F.
Variable Curb & Gutter	0	L.F.
6" Driveway	0	S.F.
8" Valley Gutter	0	S.F.
Subgrade Excavation	4402	S.Y.
Stabilized Gravel Base	10	Ton
Asphalt	25	Base Course
Bituminous Mixture	555	Ton
Asphalt Cement	8826	Gal.
Asphalt	1.5	Surface Course
Bituminous Mixture	333	Ton
Asphalt Cement	6286	Gal.
Thick Coat	490	Gal.
Asphalt Sealer		
Bituminous Material	1585	Gal.
Cover Aggregate	86	Ton
Blotter Sand	R.R.	Ton

* The Above Asphalt Quantities Were Compared With The Following Asphalt Mixtures:
 Base Course 145.8 Lb./Cu Ft. With 7% Asphalt Cement
 Surface Course #4.6 Lb./Cu Ft. With 7.12% Asphalt Cement
 Asphalt Cement @ 60# 8.54 Lb./Gal.
 Thick Coat @ 54/25# Yd.
 Asphalt Sealer:
 Bituminous Material 0.36 Gal./Sq. Yd.
 Cover Aggregate 30 Lb./Sq. Yd.
 Blotter Sand 4 L./Sq. Yd.

AREA 2
 43rd STREET N.W.
 (DEAN'S DRIVE)
 STA 1+98.65
 TO
 STA 12+50
 DEVELOPER'S WEST ACRES