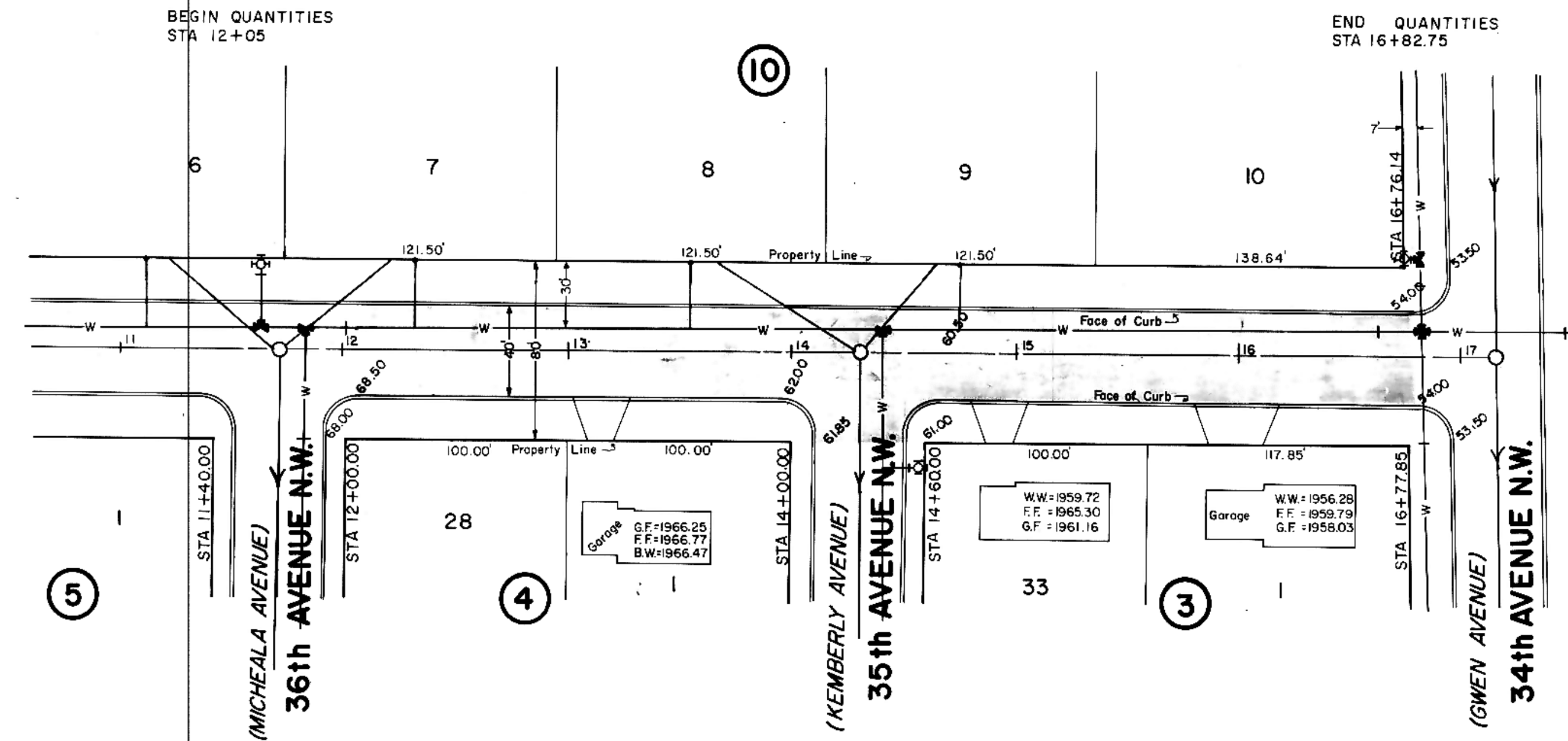


PLAN
NOTE BOOK
No.

PROFILE
NOTE BOOK
No.



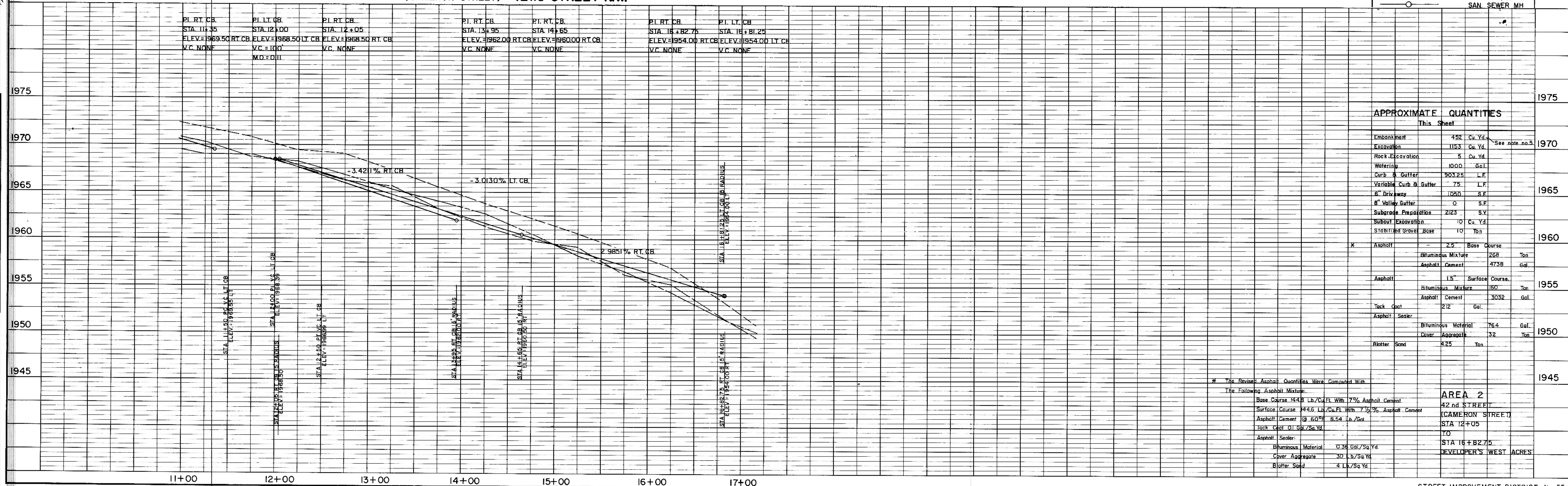
HORIZONTAL SCALE: 1" = 50'
VERTICAL SCALE: 1" = 5'
DATE: JULY, 1977

NOTES:

- Sewer and Water Improvements as shown on plans are existing as per date of street improvement plans. Existing Sewer and Water as per "Consolidated Water and Sewer Improvement District No. 24".
- All curb and gutter radii are 15 feet at face of curb unless otherwise stated.
- Proposed grades are to top of curb unless otherwise stated.
- City Engineer shall confirm location of variable curb and gutter for driveways prior to construction of said curb.
- Embankment quantities shown include an assumed 25% shrinkage factor.

LEGEND	
(EXISTING)	CENTERLINE
(EXISTING)	50' LT.
(EXISTING)	50' RT.
(EXISTING)	WATERMAINS
(EXISTING)	HYDRANTS
(EXISTING)	GATE VALVES
(EXISTING)	TEES
(EXISTING)	PLUGS
(EXISTING)	SANITARY SEWER
(EXISTING)	SAN. SEWER MH

(CAMERON STREET) 42nd STREET N.W.



APPROXIMATE QUANTITIES

This Sheet

Embankment	452	Cu. Yd.
Excavation	1153	Cu. Yd.
Rock Excavation	5	Cu. Yd.
Watering	1000	Gal.
Curb & Gutter	30325	L.F.
Variable Curb & Gutter	75	L.F.
8" Driveway	1050	S.F.
8" Valley Gutter	0	S.F.
Subgrade Preparation	2123	S.Y.
Subcut Excavation	10	Cu. Yd.
Stitching Stone Base	10	Ton
Asphalt	2.5	Base Course
Bituminous Mixture	268	Ton
Asphalt Cement	4738	Gal.
Asphalt	1.5	Surface Course
Bituminous Mixture	150	Ton
Asphalt Cement	3032	Gal.
Tack Coat	212	Gal.
Asphalt Sealer		
Bituminous Material	76.4	Gal.
Cover Aggregate	32	Ton
Blotter Sand	425	Ton

* The Revised Asphalt Quantities Were Computed With The Following Asphalt Mixture:
 Base Course 154.9 Lb./Cu. Ft. With 7% Asphalt Cement
 Surface Course 44.6 Lb./Cu. Ft. With 7.7% Asphalt Cement
 Asphalt Cement @ 60% 8.54 Lb./Gal.
 Tack Coat @ 1 Gal./Sq. Yd.
 Asphalt Sealer:
 Bituminous Material 138 Gal./Sq. Yd.
 Cover Aggregate 30 Lb./Sq. Yd.
 Blotter Sand 4 Lb./Sq. Yd.

AREA 2
42nd STREET
(CAMERON STREET)
STA 12+05
TO
STA 16+82.75
DEVELOPER'S WEST ACRES