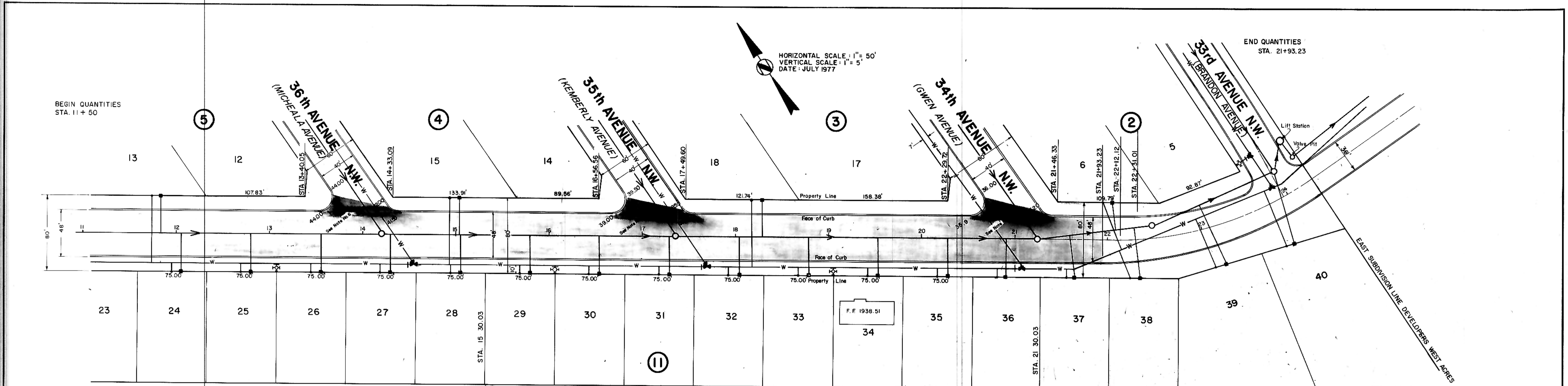


PLAN  
 REVISIONS  
 PHOTO  
 ALIGNMENT CHECKER  
 RECORD CHECKER  
 No.

PROFILE  
 REVISIONS  
 PHOTO  
 GRADES CHECKER  
 STRUCTURE NOTATIONS CHECKER  
 No.



SOUTH SUBDIVISION LINE DEVELOPERS WEST ACRES

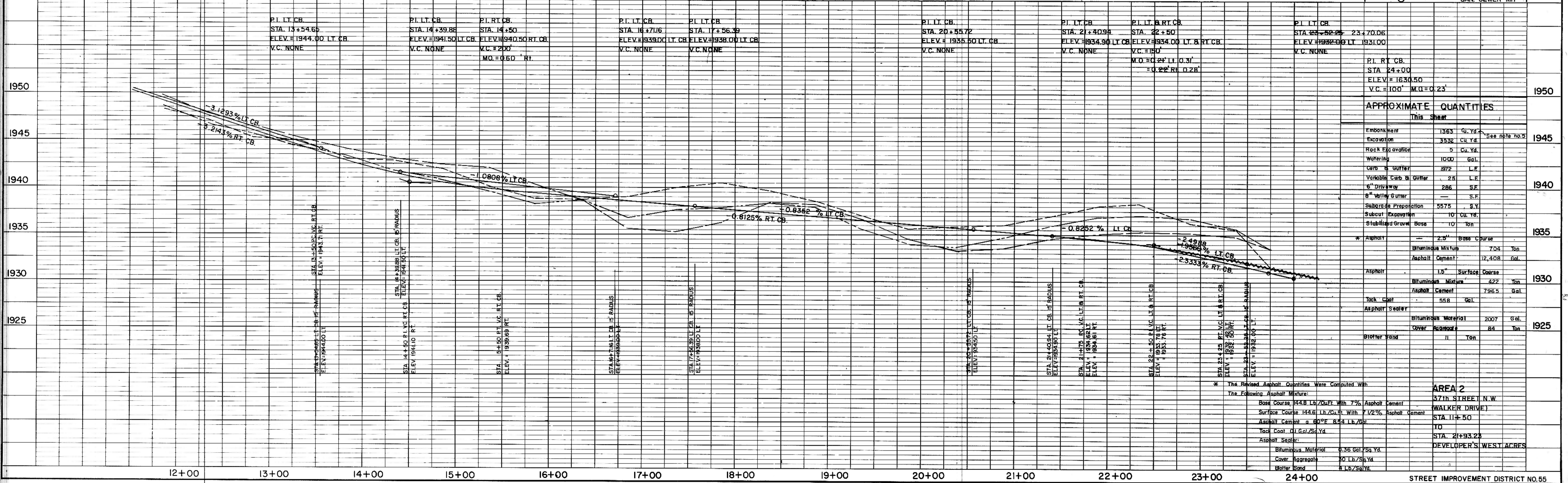
VALLEY GUTTERS WERE DELETED IN 1977 AS REQUESTED BY T. POTHOFF

- NOTES:
- Sewer and Water Improvements as shown on plans are existing as per date of street improvement plans. Existing Sewer and Water as per "Consolidated Water and Sewer Improvement District No. 24".
  - All curb and gutter radii are 15 feet at face of curb unless otherwise stated.
  - Proposed grades are to top of curb unless otherwise stated.
  - City Engineer shall confirm location of variable curb and gutter for driveways prior to construction of said curb.
  - Embankment quantities shown include an assumed 25% shrinkage factor.
  - Depress crown and tip gutter section to allow drainage to flow across intersection as indicated.

LEGEND

(---)	(EXISTING) CENTERLINE
(---)	50' LT.
(---)	50' RT.
(---)	(EXISTING) WATERMAINS
(---)	HYDRANTS
(---)	GATE VALVES
(---)	TEES
(---)	PLUGS
(---)	SANITARY SEWER
(---)	SAN. SEWER MH

(WALKER DRIVE) 37th STREET N.W.



APPROXIMATE QUANTITIES

Item	Quantity	Unit
Embankment	1363	Cu. Yd.
Excavation	3332	Cu. Yd.
Rock Excavation	5	Cu. Yd.
Water Main	1000	Gal.
Curb & Gutter	872	L.F.
Variable Curb & Gutter	25	L.F.
5" Driveway	286	S.F.
6" Water Gutter		S.F.
Subgrade Preparation	5575	S.Y.
Subcut Excavation	10	Cu. Yd.
Stabilized Gravel Base	10	Ton
Asphalt	2.31	Base Course
Bituminous Mixture	704	Ton
Asphalt Cement	12,408	Gal.
Asphalt	1.5	Surface Course
Bituminous Mixture	422	Ton
Asphalt Cement	7965	Gal.
Rock Coat	568	Gal.
Asphalt Sealant		
Bituminous Material	2007	Gal.
Cover	84	Ton
Gravel Sand	11	Ton

\* The Revised Asphalt Quantities Were Computed With The Following Asphalt Mixture:

Base Course: 144.8 Lb./Sq. Yd. With 7% Asphalt Cement  
 Surface Course: 144.8 Lb./Sq. Yd. With 7 1/2% Asphalt Cement  
 Asphalt Cement: a 60°F R-4.5 Lb./Gal.  
 Rock Coat: 1.1 Gal./Sq. Yd.  
 Asphalt Sealant:  
 Bituminous Material: 0.35 Gal./Sq. Yd.  
 Cover: Aggregate: 40 Lb./Sq. Yd.  
 Boiler Sand: 1.1625 Gal./Sq. Yd.

AREA 2  
 37th STREET N.W.  
 WALKER DRIVE  
 STA. 11+50  
 TO  
 STA. 21+93.23  
 DEVELOPER'S WEST ACRES